

HOME & DESIGN

Spring **STYLE**

*Colorful ideas
to brighten
your décor*



LUSH LANDSCAPES
Award-Winning Projects

PRIVATE TOUR
with Olympic Skater
MICHAEL WEISS

STARK®

CARPET

FABRIC

FURNITURE

WALLCOVERING



BRING YOUR ROOM TO LIFE

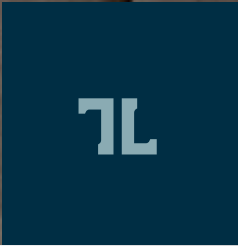
TO THE TRADE WWW.STARKCARPET.COM

1099 14th Street NW, Suite 430 Washington, DC 20005 202.484.4566

NO 112348C Lumina Collection #STARKTOUCH

Room Design by Gideon Mendelson

IMPECCABLE DESIGN | UNPARALLELED LOCATION
THE LAUREN RESIDENCES



TWO AND THREE BEDROOM RESIDENCES
AVAILABLE FOR IMMEDIATE OWNERSHIP
FURNISHED MODELS AVAILABLE FOR TOUR

301.349.6529
LIVEATTHELAUREN.COM

McWilliams
Ballard





Introducing SBrand furniture by Skip Sroka exclusively at Atrium Interiors, Tysons Galleria.

202-734-3920 | srokadesign.com



MAKE THE MOST OUT
OF YOUR SPACE

FREE
INTERIOR DESIGN SERVICE*
BOOK TODAY

*Contact store for conditions



Satellite table lamp \$449



Adelaide chair \$519



Cupertino desk \$1,599



Osaka sofa \$1,659



Bordeaux console \$689

BoConcept[®]
Urban Danish Design since 1952

Imagine...



WITH McHALE YOU CAN.

SINGLE SOURCE
**DESIGN
+
BUILD**

LANDSCAPE
MASONRY
CARPENTRY
MAINTENANCE
CONSTRUCTION

Winner of:

*9 Grand, 2 Heritage, 4 Decade, 3 Distinction,
& 1 Honorable Mention Awards
in 2015 for Excellence in Landscape.*

*Given by the
Landscape Contractor's Association MD-DC-VA.*

McHALE LANDSCAPE DESIGN

MAIN: 301.599.8300 ■ EASTON: 410.770.9449
MCLEAN: 703.760.8600 ■ ANNAPOLIS: 410.990.0894

mchalelandscape.com





Experience the before and after



See their space before **#CCBeforeAfter**

CALIFORNIA CLOSETS®

californiaclosets.com 703.573.9300

WASHINGTON DC 5223 Wisconsin Ave. NW


If you ever get bored,
just open your eyes.





One Name Says it All!

Michael Nash[®]

Design  **Build** & *homes*

The Ultimate in Luxury[®]

New Homes • Additions • Kitchens • Bathrooms • Basements • Outdoor Living Spaces

703.641.9800 | michael-nash.com



Theodores

Modern Furniture + Interior Design



Meaningful Design
Exceptional Quality
Manufactured in Spain





70

MARCH/APRIL 2017

CONTENTS

FEATURES

The Great Outdoors 70

Four award-winning landscapes herald springtime in style.

BY KAREN A. WATKINS

Grace Notes 112

A design team breathes fresh life into a stately Tudor-style home in DC.

BY JENNIFER BARGER

Southern Belle 124

Vibrant color takes center stage in a charming Foxhall home designed by Erica Burns.

BY CHARLOTTE SAFAVI

Almost Heaven 136

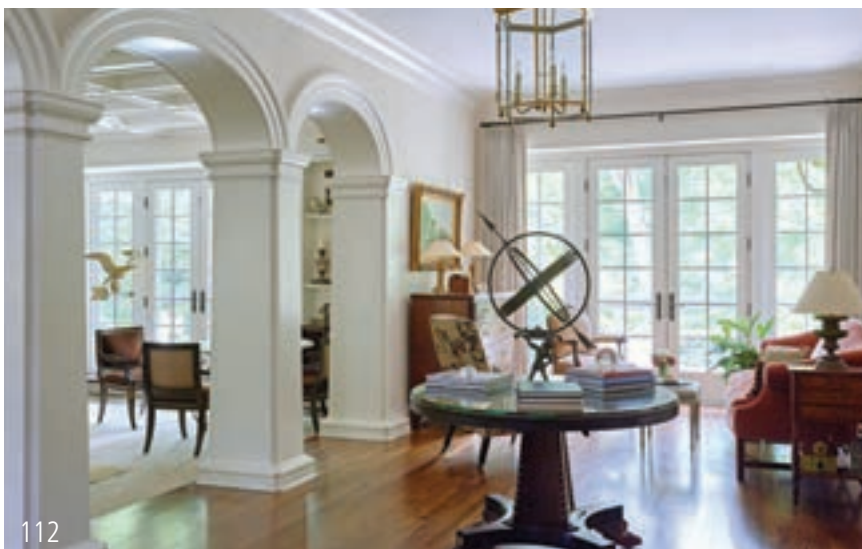
A glass-walled West Virginia abode by Wiedemann Architects embraces dramatic cliff-top views.

BY JULIE SANDERS

Perfect Balance 146

Susan Gulick marries form and function in a chic, sophisticated Great Falls home.

BY SHARON JAFFE DAN



112



136



146



22



160

DEPARTMENTS

Editor's Message	20
Cachet	22
Pope-Leighey House restored • Q&A with Salt & Sundry's Amanda McClements • Paola McDonald's sustainable style	
Indulgences	30
The good life in travel, fashion, food and toys.	
Datebook	40
Events and exhibitions.	
Portfolio	48
Dane Austin transforms a mundane DC condo.	
Private Tour	58
At home with Olympic skater Michael Weiss.	
Bazaar	160
The latest finds in furniture, flooring and lighting.	
Studio	172
Swatchroom co-founder Maggie O'Neill's creative vision.	
Applause	208
The historic Watch Box returns to the Navy Yard.	

ON THE COVER:

Soft hues distinguish a chic dining room designed by Erica Burns. Architecture: GTM Architects. Contractor: Sandy Spring Builders. Photo © Stacy Zarin Goldberg.



30



48

RESOURCES

Excellence in Landscape Design	69
H&D Design Partners	155
Lighting, Furniture & Flooring	162
Out & About	176
Find It Here!	180

LUXURY HOMES

Who's Building What	184
Builder Profile	188
Acorn Deck House Company	
Real Estate Report	192

Wonderfully Livable



SUSAN GULICK INTERIORS

703.674.0332 | www.susangulickinteriors.com

WASHINGTON DC • MD • VA

HOME & DESIGN

The Magazine of Architecture and Fine Interiors

PUBLISHER **Tod Herbers**

EDITOR IN CHIEF **Sharon Jaffe Dan**

SENIOR EDITOR **Julie Sanders**

ART DIRECTOR **Rebecca K. McClimans**

PRODUCTION DIRECTOR **Jean Crispens-Williams**

DESIGNER **Nelson Sayson**

OPERATIONS MANAGER **Jerry Parks**

DIRECTOR OF NEW MEDIA **Devin Herbers**

PROMOTIONS MANAGER **Lois Maples Gaul**

ACCOUNTING MANAGER **De-fang Shen**

CREDIT MANAGER **Donna Taurman**

OFFICE MGR. / MKTG. ASST. **Cindy Rubio**

INTERN **Samuel Antezana**

DIRECTOR OF SALES & MARKETING **Martha Champion**

ADVERTISING MANAGER - DC **Monica West Porter**

SENIOR ACCOUNT MANAGER **Mechelle Clements**

SENIOR ACCOUNT MANAGER **Charlotte DeFuria**

SENIOR ACCOUNT MANAGER **Shelley Golinsky**

NEWSSTAND DISTRIBUTION BY



Copyright 2017 Washington Maryland Virginia HOME & DESIGN® (ISSN 1551-0247) March/April 2017, volume nineteen number two. Washington Maryland Virginia HOME & DESIGN is published bi-monthly by Homestyles Media Inc, 451 Hungerford Drive, Suite 350, Rockville, MD 20850. Subscriptions: US subscriptions one year (6 issues) \$19.95; two years (12 issues) \$29.95. Canadian subscribers add \$110; other non-US subscribers add \$160. Single copies \$5.95 plus postage. POSTMASTER: Send address changes to HOME & DESIGN, P.O. Box 301, Congers, NY 10920-0301 USA. For advertising and editorial information, call 240-328-6275. All rights reserved. No part of this periodical may be reproduced without written permission. Neither the Publisher nor the Advertisers will be held responsible for any error found in the magazine, nor does the Publisher accept any. The Publisher accepts no liability for the accuracy of statements made by Advertisers. The Publisher is not responsible nor assumes any liability for omissions or errors in the table of contents or directories. This is not intended as an offer where prohibited by state laws. All prices and finance claims appearing in this magazine are subject to change without prior notice. All real estate advertised in this magazine is subject to the Federal Fair Housing Act, which makes it illegal to advertise "any preference, limitation, or discrimination because of color, religion, sex, handicap, familial status, or national origin." This company will not knowingly accept any advertisement for real estate which is in violation of the law. All persons are hereby informed that all dwellings advertised are available on an equal opportunity basis.



my home,

poliform home

2611 p street nw / washington, dc 20007

202.554.8658 / info@poliformdc.com

www.poliformdc.com

Poliform
sagartstudio

Advertising Information

240-328-6275

www.HomeandDesign.com

Subscription Information

866-691-6115



DISCOVER FARROW & BALL AT:

Color Wheel, McLean, VA, 703 356 8477 | Potomac Paint and Design, Alexandria, VA, 703 379 5800
Patrick Street Interiors, Frederick, MD, 240 575 5875

WWW.FARROW-BALL.COM



Architect: Donald Lococo Architects; Photography by David Burroughs



WINDSOR
WINDOWS & DOORS
A Woodgrain Millwork Company

Windsor understands every project is unique.

We build quality and value into every window, regardless of what style you choose. Choose from several different products to create a stunning, high-performance home.

Visit: www.windsorpinnacle.com

DISTRIBUTED BY:

THE SANDERS COMPANY

Bethesda Annapolis Baltimore Charlottesville

800-394-6974

www.thesanderscompany.com



ENDURING *vision*
ENDURING *craftsmanship*
ENDURING *relationships*



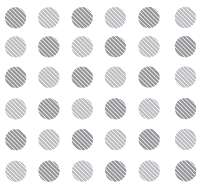
Vincent Greene Architects | Bob Jackson Landscapes | David Burroughs Photography



PYRAMID BUILDERS

a tradition of fine craftsmanship

410.571.7707 | www.pyramid-builders.com



INTERIOR
CONCEPTS
INCORPORATED

A FULL SERVICE DESIGN FIRM

2560 RIVA ROAD ANNAPOLIS, MARYLAND
410.224.7366 | 301.970.8009

INTERIORCONCEPTSINC.COM

CELEBRATING 12,784 DAYS OF AWARD-WINNING KITCHEN DESIGNS

CHEERS TO 35 YEARS



Potomac, Maryland

Jack Rosen
CUSTOM KITCHENS, INC.

35 YEARS
Since 1982

CULINARY | CLOSETS | HOME OFFICES | ENTERTAINMENT



www.RosenKitchens.com

Showroom: 12223 Nebel Street, Rockville | 240.292.7121

Voted best Kitchen Design Firm by the readers of Bethesda Magazine, 2011, 2016.



EDITOR'S MESSAGE

Louis Kahn once said, “Even a brick wants to be something.” This influential 20th-century architect—noted for his monumental work in the U.S. and around the globe—

extolled the honesty and permanence of authentic materials. As he said in archived film footage that later appeared in a 2003 documentary, “It’s important...to honor the material that you use...and glorify the brick instead of shortchanging it.”

This notion can also be applied to residential design. The materials homeowners and their designers select speak volumes about the character and personality of the spaces they create.

The masterminds behind the one-of-a-kind homes and renovations appearing in this issue all helped clients select materials that set a perfect tone. In “Grace Notes” on page 112, architect Ankie Barnes updated a Washington gem while respecting its 1920s-era provenance. A former porch was transformed into a charming breakfast room surrounded by granite archways that blend beautifully with the home’s original façade.

Materials take on a personal nature in “Almost Heaven” on page 136. The floors in this minimalist West Virginia cabin by Wiedemann Architects are made of polished, black-tinted concrete—echoing the cast-resin material homeowner and artist Loraine Strait uses to forge sculptures on site.

And in “Family Affair” on page 57, Lisa Weiss and her husband, Olympic skater Michael Weiss, selected a glass-enclosed fireplace sheathed in porcelain tile and concrete slabs to create a contemporary vibe in their new McLean home. Meanwhile, a handsome, 350-bottle wine room designed by Lisa combines a custom iron door and an accent wall crafted of reclaimed timber.

We also cover the work of artist Maggie O’Neill in “Creative Dynamo” on page 172. Talk about glorifying materials: She and her colleagues have transformed dozens of area homes and businesses using a dizzying array of bespoke and salvaged media—from plumbing pipes to laser-cut feathers. As O’Neill admits, “I geek out over materials.”

No doubt, Louis Kahn would be impressed.



Sharon Jaffe Dan, Editor in Chief
sdan@homeanddesign.com



Fire and ice: A polished porcelain tile wall encloses a three-sided fireplace in Olympic skater Michael Weiss’s new home in McLean.

© BOB NAROD

French Art de Vivre

rochebobo
PARIS



Photo: Michel Rabreau, Spectacles Plus, TASCAR, www.guide.fr. Conditions apply, ask your store for details. Program available on selected items and subject to availability.

Episode. Corner composition, design Roberto Tapinassi and Maurizio Manzoni.

Tiss. Bookcase, design Bina Baitel.

Ovni. Cocktail tables, design Vincenzo Maiolino.

Manufactured in Europe.

• Complimentary 3D Interior Design Service¹ • Quick Ship program available²

www.roche-bobois.com



CACHET

A GEM RESTORED

Frank Lloyd Wright's newly conserved Pope-Leighey House opens for tours in April

Tucked into the picturesque grounds of Woodlawn Plantation in Alexandria is a structure from a completely different era. Designed by Frank Lloyd Wright in 1939, the Pope-Leighey House exemplifies the illustrious architect's "Usonian" vision: small, single-story dwellings, integrated with nature and affordable for the middle class. After years of deteriorating and fading in the elements, this tiny yet significant abode had its exterior painstakingly restored in late 2015.

Architect Ashley Wilson, AIA, ASID, of the National Trust for



Historic Preservation, oversaw the conservation effort, which involved cleaning the Tidewater red cypress exterior, protecting it from biological growth and UV rays and coating it with a wood preservative. Narrow grafts known as wood dutchman were also used

to repair parts of the outer structure.

"This project provides further understanding of Frank Lloyd Wright's intent for exterior wood while offering new solutions for the care and maintenance of wood buildings," explains Wilson. "The



PHOTOS © PAUL BURK

An exterior renovation conserved the home's Tidewater red cypress exterior (left). A dusk view (above) reveals a cut-out pattern on the windows. Inside (top), visitors will discover built-in shelving and furniture designed by Wright.

solutions can be used by any homeowner."

Originally commissioned by journalist Loren Pope in Falls Church in 1939, Pope-Leighey House was moved to Woodlawn Plantation—once part of the historic Mount Vernon estate—when construction of Interstate 66 threatened to demolish it in 1963. The home features the flat, cantilevered roof, corner windows and spacious interiors that typify Wright's work and

continue to influence American architecture today.

"Pope-Leighey House was only 25 years old when the Trust recognized its importance to American culture as a representative example of Frank Lloyd Wright's Usonian houses," says Wilson. Starting in April, the house is open for tours Friday through Monday; tickets are \$15 for adults. woodlawnpopeleighey.org

—Deepa Ramudamu

LUXURY REDEFINED

ARCHITECTURE + INTERIOR DESIGN



PURPLE CHERRY
architects

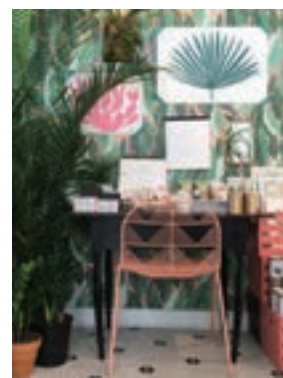
ANNAPOLIS, MD
410.990.1700

PURPLECHERRY.COM

CHARLOTTESVILLE, VA
434.245.2211
(new location)



Amanda McClements (left) poses in Salt & Sundry's sun-filled new location on 14th Street (below); Moroccan leather poufs (bottom, left) are among the store's offerings. Potted plants frame a desk vignette at Little Leaf (bottom, right).



POUF IMAGE © JEFFREY MARTIN

SHOP TALK

*Salt & Sundry boutique relocates—
and Little Leaf moves in*

Salt & Sundry beckons browsers with a quirky assortment of barware, ceramics, textiles and more. It's a winning concept: After its debut in DC's Union Market in 2012, a second location followed just two years later at 1401 S Street, NW.

In December 2016, the shop relocated to a larger space at 1625 14th Street, NW—and the bright, airy S Street location became home to Little Leaf—a showcase for cacti, succulents and air plants, plus stationery, prints, desk accessories and more. *H&D* chatted with Amanda McClements, the industrious owner and creative director of both. shopsaltsundry.com

What inspired Salt & Sundry?

About five years ago, I started dreaming up a place where I could share my passions for entertaining and design. Less than a year later, I opened Salt & Sundry in Union Market. I love creating gathering places where people can meet up and find goods to beautify their homes.

How is Little Leaf different?

Little Leaf is Salt & Sundry's free-spirited little sister. Our focus there is plants and paper, two of my favorite things. Like Salt & Sundry, we support makers and designers local and beyond like DC-based Printed Wild wrapping-paper sheets and Convivial Production, a ceramics studio in Kansas City. We also stock jewelry by one

of our own team members, hand-poured candles, books and gifts.

How do you select your inventory?

My process for buying is fairly simple: If I'd like to own it or give it to a good friend, it's in! The local maker scene has really blossomed, so we're finding new lines to stock every month.

What trends are you seeing?

I'm loving the throwback we're seeing to the '70s in interiors and accessories, like modern takes on peacock chairs and primary colors in bold stripes. Also, plants are a huge trend, from wallpapers and fabrics to mini jungles that grow indoors.

How do you bring springtime into your décor?

I love adding air plants to unexpected places; they have an ethereal, early-spring look. Try creating a table setting with air plants in small dishes down the center, or popping them into bookshelf displays inside sculptural vessels. —*Julie Sanders*

THE OPEN LOFT KITCHEN



DESIGN GOALS

- Design a highly functional kitchen in an open loft space suitable for entertaining
- Create a warm, welcoming space to complement the rugged cement floors and support columns
- Hide the working parts of the kitchen when not in use
- Provide lots of storage in spite of the lack of wall cabinets



Steven Paul Whitsitt Photography

MISSION ACCOMPLISHED

by #PaulBentham4JenniferGilmer

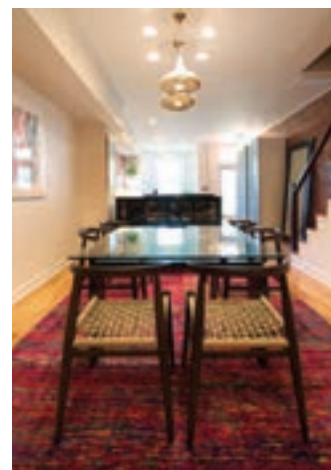


JENNIFER GILMER
Kitchen & Bath, Ltd.

6935 Wisconsin Avenue, Chevy Chase, MD 20815 | 301-657-2500 | www.gilmerkitchens.com
Also serving the Eastern Shore and the beaches: Bethany, Fenwick and Rehoboth



First-place winner in the #GetYourGreenOn design contest, McDonald's DC project features sustainable interiors showcasing a Surya rug and a Phillips Collection resin cocktail table in the living room (left); a dining room rug by Jaipur Living (below); and Silestone countertops in the kitchen (bottom, left).



PHOTOS © GREG TINILUS



GOING GREEN

Paola McDonald wins a sustainability award

When designer Paola McDonald heard that the Sustainable Furnishings Council had launched an interior-design competition to mark its 10th anniversary, she was in the midst of an eco-friendly makeover in DC. “My client wanted her home to be as environmentally friendly as it could be, within a budget,” recalls McDonald, principal of Virginia-based Olamar Interiors.

After finishing the house with a chic mix of sustainable furniture, flooring and rugs, McDonald entered the #GetYourGreenOn contest—and won first place. She and other winners were honored at the 2016 High Point Market and also headlined a design panel at the Las Vegas Market on January 22, 2017.

McDonald points out that sustainability, affordability and style are not mutually exclusive. “The Sustainable Furnishings Council narrows down manufacturers that are doing great things for the environment,” she says. “These manufacturers are also committed to making strong, beautiful pieces that last a long time.”

By eliminating the VOCs and off-gassing associated with conventional furnishings, indoor air quality—and health—can be improved. “If we make these small changes now,” McDonald asserts, “we can start to impact on a larger scale the type of world we leave behind for our children.”

olamarinteriors.com; sustainablefurnishings.org —Sharon Jaffe Dan

Bethesda



2017
Winner

READERS' PICK
BEST BUILDER



Move Forward.

Whether your style is cutting edge, traditional, or transitional, Sandy Spring Builders knows how to bring your unique vision to life. An integrated, full-service group with more than 30 years of experience, we can help you realize your dream home. With a range of design solutions, our approach is sure to fit your budget and lifestyle.

www.sandyspringbuilders.com • 301.913.5995

Image courtesy of Marvin Windows and Doors.



—
EVERY HOUSE WAITS TO BE A

Marvin Home

—

Replace your windows without sacrificing the character of your home. Marvin Windows and Doors are thoughtfully designed to give you the comfort and energy efficiency you demand, and an unrivaled quality that rejuvenates the beauty of your home.

**FIND INSPIRATION AT YOUR LOCAL,
INDEPENDENT MARVIN DEALER TODAY.**

American Cedar & Millwork

2 Locations:
Millersville & Baltimore
410-987-6800
Millwork1.com

National Lumber

4901 Pulaski Hwy.
Baltimore, MD
443-573-0459
NationalLumber.biz

Barrons

3 locations to serve you:
Gaithersburg, MD
301-948-6600
Manassas, VA
571-292-2900
Rockville, MD
301-591-0600
BarronsLumber.com

Old Town

Windows and Doors
631 S Patrick St.
Alexandria, VA 22314
703-838-2779
OldTownWindowsAndDoors.com

Otter Creek Millwork

10 S Greenway Ave.
Boyce, VA
540-837-9351
OtterCreekMillwork.com

ClearView Window & Door Company

Parkville 410-668-1110
Cockeysville 410-771-0771
GetClearview.com

Tart Lumber Company

22145 Shaw Rd.
Sterling, VA
703-450-5040
TartLumber.com

Forbes Design Center

1940 Greenspring Dr., Suite D
Timonium, MD
410-252-1009
ForbesDesignCenter.com

Warren's Wood Works, Inc.

8708 Brooks Dr.
Easton, MD
410-820-8984
WarrensWoodWorks.com

Hodges Windows & Doors

120 W Jefferson St.
Falls Church, VA
44190 Waxpool Rd., Suite 192
Ashburn, VA
703-532-0184
HodgesCompany.com

Window and Door Showplace

McLean - 703-506-3650
Sterling - 703-736-9600
WDSHowplace.com

J.F. Johnson Lumber

2 Locations to serve you:
Edgewater - 410-956-0400
Millersville - 410-987-5200
JohnsonLumber.biz

Mid South

Building Supply, Inc.
7940 Woodruff Court
Springfield, VA
703-321-8500
msbs.net

MARVIN
Windows and Doors

Built around you.®



©2017 Marvin Windows and Doors. All rights reserved. Registered trademark of Marvin Windows and Doors.
ENERGY STAR and the ENERGY STAR certification mark are registered U.S. marks.



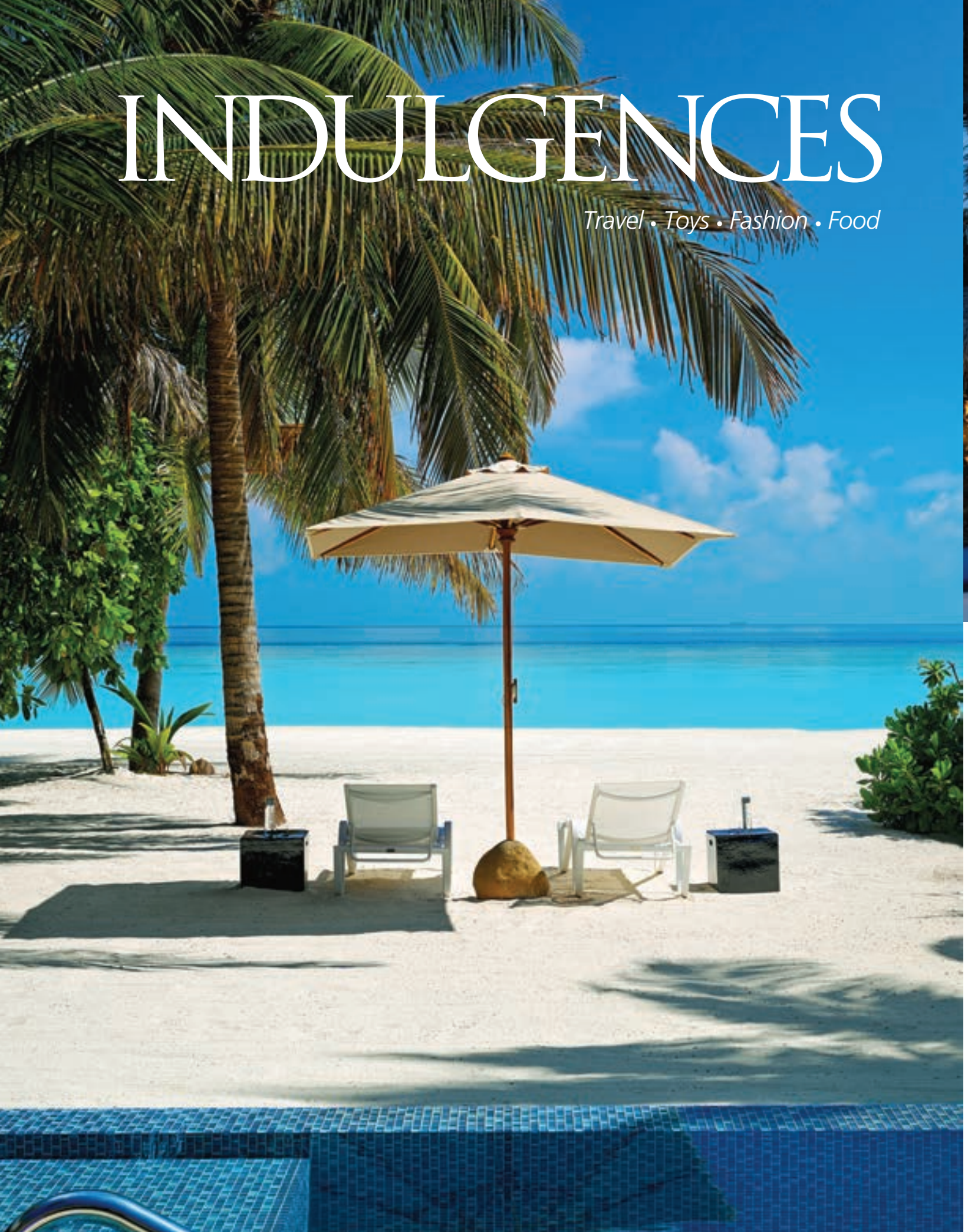
SieMatic

Visit our flagship showroom to experience the latest innovations from SieMatic. 7550 Wisconsin Ave. Bethesda, MD 301.657.3800
konstsiematic.com

KONST
KITCHEN INTERIOR DESIGN

INDULGENCES

Travel • Toys • Fashion • Food





TROPICAL GETAWAY Vela Private Island in the Maldives accommodates guests in villas designed by Czech architect Petr Kolar; many overlook the turquoise Indian Ocean (opposite). Built with local materials, the beach pool villa (above) features teak furniture, an indoor bathroom and an outdoor bath connected by a garden atrium. Water sports, a spa and a golf course await. Rates from \$2,000. velaaprivateisland.com

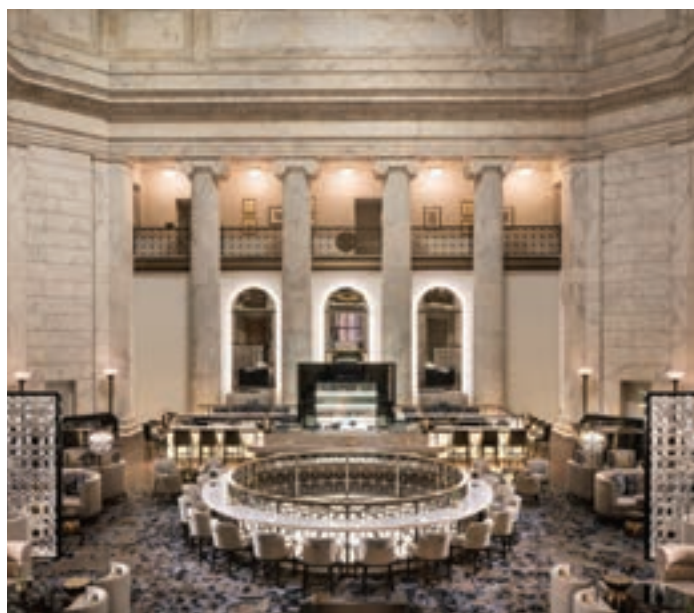


WASHINGTON OASIS

The Avery Georgetown, a 15-room boutique hotel, opened last year in a renovated row house (right).

Interiors by DC-based designer Kate Ballou of Hendrick Interiors are playful and feminine, yet rooted in a modern sensibility.

A king suite (above) boasts Harlequin wallpaper, a classic Wishbone Chair and a whimsical Discoco chandelier. Rates from \$299. averygeorgetown.com



HISTORY REBORN The Ritz-Carlton, Philadelphia is fresh from a \$24 million facelift. Wimberly Interiors recast the grand lobby (above) in neutral colors, textures and materials. In the public spaces and updated guest rooms, pops of metallic and bronze were inspired by the colors of money—an homage to the 1908 building, which originally housed a bank. Rates from \$299. ritzcarlton.com



MOODY BLUES

This easy, breezy ensemble from CH Carolina Herrera's Spring/Summer ready-to-wear collection combines a floral-printed silk maxi skirt (\$1,285) and a silk navy blouse (\$535). Available at the CH Carolina Herrera boutique in CityCenterDC. carolinaherrera.com



ALL THAT GLITTERS

Spain's Carrera y Carrera pays tribute to glacial forms in its futuristic Invierno (Winter) line of jewelry. The Iceberg Long Earrings combine white 18-carat gold with 1.87 carats of diamonds. Available at Neiman Marcus in Tysons Galleria; price upon request. carreraycarrera.com; neimanmarcus.com



STAR POWER

Sarah Jessica Parker of *Sex and the City* fame has opened the first brick-and-mortar boutique to carry her signature shoe, handbag and little black dress collections. The star was on hand for the grand opening of SJP by Sarah Jessica Parker in the new MGM National Harbor, where the Rampling Scintillate pumps are yours for \$375. sjp-collection.com



CALLIGARIS STORE WASHINGTON

3328 M St. Georgetown
washingtondc@calligaris.com - Ph. 202 244 5544
www.washingtondc.calligaris.us

Sweet sofa / Plum Soft throw pillows / Plum Soft-L throw pillows /
Tweet lamp table / Medley rug / Pom Pom floor table

calligaris 

**ITALIAN
SMART DESIGN**
SINCE 1923



PLUG + PLAY

Tesla's new Model X SUV promises sustainability, safety and style. Its 100 kWh battery provides 295 miles of range and its electric powertrain takes the all-wheel-drive vehicle from 0 to 60 mph in 3.2 seconds while producing zero emissions. Automatic emergency braking and side collision avoidance offer peace of mind on the road. And "Falcon Wing" doors allow easy access for second- and third-row passengers, even in tight parking spots. \$140,000; tesla.com



ADVENTURE TRACKER

Whether you're on the slopes or the hiking trail, Garmin's fenix 3 (pictured) and fenix 5 multisport GPS watches double as fitness monitors and navigators. Sunlight-readable color display and LED backlight make data visible in any conditions. Watches are water-rated to 100 meters. From \$499 for the fenix 3 and \$599 for the fenix 5. garmin.com



OUTDOOR SOUND

Braven's BRV-XXL Bluetooth speaker livens up outdoor events with its four HD audio drivers and built-in bass and treble controls. An internal battery powers the device for 14 hours of play time and also charges your smartphone. The waterproof cabinet keeps the party going, even in the rain. Available in black or white; \$350. braven.com

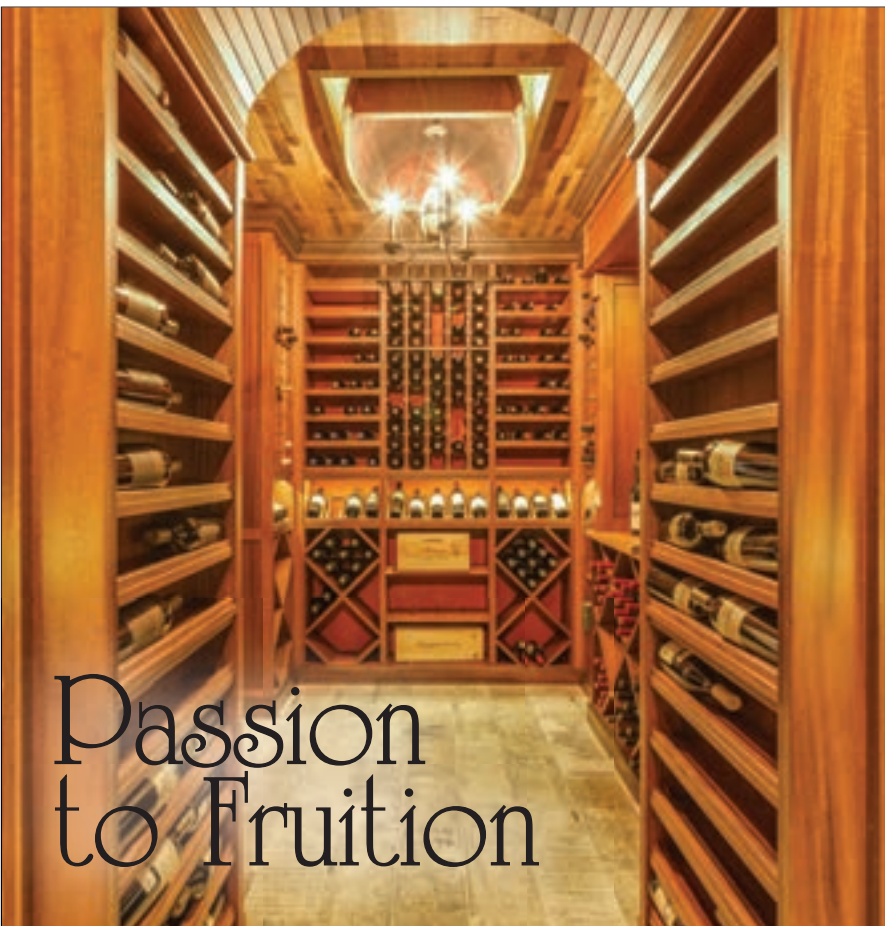


Discover Dewey Beach's only resort-style condominium community

THE RESIDENCES
LIGHTHOUSE COVE ~ DEWEY BEACH

Situated on the Rehoboth Bay with views of the Atlantic Ocean, residents of Lighthouse Cove are able to enjoy unparalleled amenities, including **public beach access, on-site dining, a fitness center, indoor saltwater pool** and **more**. New construction, 1, 2 & 3 bedroom homes starting at \$459,900 – *Call today to schedule a tour!*

1301 COASTAL HIGHWAY, DEWEY BEACH, DE 19971 | 302-212-0002 | THERESIDENCESDE.COM



Passion to Fruition

wine
cellars
by LISA

Love Wine? Love sharing it with family and friends?

Award winning designer Lisa Weiss will discover your wine style and create the perfect atmosphere to share your passion for wine. Would you trust the design and build of your wine cellar, to just anyone?

WineCellarsByLisa.com
703-992-WINE(9463)





ON THE WATERFRONT Blackwall Hitch serves up “coastally inspired” fare on the Potomac in Old Town Alexandria. Through March 30, guests can enjoy a fixed-price Surf & Turf menu or savor à la carte specialties such as oysters or a chicken-and-baked-brie sandwich (right and far right). Hammond Wilson architects designed the restaurant and terraces (above), as well as the Blackwall Hitch in Annapolis. 5 Cameron Street; 703-739-6090. theblackwallhitch.com



▼ **BALKAN EXPERIENCE** Following sister locations in Capitol Hill and Belgrade, Serbia, a third Ambar has opened in Clarendon, Virginia. Nya Gill designed the light-filled dining room and bar area (below). The restaurant offers a fresh spin on traditional Balkan fare. Order the Balkan Experience for unlimited samples from the entire menu, served family-style; priced at \$35 per person. 2901 Wilson Boulevard; 703-875-9663. ambarrestaurant.com
—Sharon Jaffe Dan



DUPONT CIRCLE DEBUT Opened last fall in The St. Gregory Hotel, Tredici Enoteca serves Mediterranean-style cuisine along with a varied selection of wines and seasonal craft cocktails. Designed by Bill Rooney of STUDIOinc, the hotel’s welcoming lobby (above)—featuring dark-wood herringbone flooring and an oversized hearth—leads into the restaurant. 2033 M Street, NW; 202-530-3600. tredicidc.com





OLAMAR
INTERIORS

9595 Scales Place
Bristow, VA 20136
Phone: 571-239-8845
Web: olamarinteriors.com



Paint Like No Other®



Brilliant, Rich, Everlasting Color

Our most premium paint, engineered to deliver unrivaled color quality and exceptional coverage in fewer coats.



Visit your local Benjamin Moore store today.

©2016 Benjamin Moore & Co. Aura, Benjamin Moore, Color Lock, Green Promise, Paint like no other, and the triangle "M" symbol are registered trademarks licensed to Benjamin Moore & Co.



**AMERICAN
automation**

Home Theater • Whole House Audio Video
Telephone-Intercom Systems • High Speed Internet
Energy Management • Lighting Control
Security & Safety Alarms

Maryland | DC | Virginia 800.394.6454
www.american-automation.com



CEA
MEMBER

Advancing Science
in Automation

isf

HAA



CEDIA Electronic Lifestyles Award Winner

VADCJS #11-2129



Appliance
Distributors
Unlimited

adu.com



ENJOY UP TO

\$3,798

WITH YOUR QUALIFYING

MONOGRAM

APPLIANCE PURCHASE



Save up to \$3,798 in free appliances with the purchase of a Monogram **Pro Range** or a **Cooktop** and **Wall Oven** combination during the "SWEET REWARDS" event.



KNOWLEDGE



EXPERIENCE



SELECTION



INSPIRATION

Appliance Distributors Unlimited offers these qualities to anyone looking for modern kitchen appliances. Our Professional Appliance Associates have factory training, technical knowledge and years of experience to assist you in creating your dream kitchen.

VISIT ANY OF OUR SHOWROOMS

Baltimore, MD | Gaithersburg, MD | Takoma Park, MD | Chantilly, VA | York, PA
410.789.8000 | 240.650.6000 | 301.608.2600 | 703.263.2300 | 717.845.6500

FIND MORE INFORMATION AT

adu.com



Clockwise from left: "Love Alley 4" by Polly Apfelbaum at the National Museum of Women in the Arts; a bowl by June Schwarcz at the Renwick; and an orchid at the Hirshhorn.

DATEBOOK

Exhibits and design events in Maryland, DC and Virginia

Orchids: A Moment

The *Hirshhorn Museum* is awash in exotic color and fragrance, thanks to this exhibit highlighting hundreds of live specimens from the Smithsonian Gardens' orchid collection. Visitors move through a modern display of plants and study time-lapse videos of orchids in bloom.

Through May 14
hirshhorn.si.edu or si.edu



Timeless Weft: Ancient Tapestries and the Art of Louise B. Wheatley

The *Baltimore Museum of Art* celebrates Maryland textile artist Louise B. Wheatley with a showing of her work. By displaying Wheatley's creations alongside some of the centuries-old tapestries that inspired her, the exhibit helps viewers understand the artist's motifs and techniques.

Through July 30, 2017
artbma.org

Maryland Home & Garden Show

Held at the *Maryland State Fairgrounds* in Timonium, this year's show revolves around the garden theme "Spring Around the World." Landscape profes-

sionals will create lavish displays based on gardens in the country of their choice. More than 300 home-improvement exhibitors and a craft show round out the action.

March 4, 5, 10 to 12
mdhomeandgarden.com

In the Tower: Theaster Gates

Contemporary American artist Theaster Gates will create an installation for the new Tower 3 galleries in the *National Gallery's East Building*. Entitled "The Minor Arts," it will examine how human experience instills everyday objects with new meaning.

March 5 to September 4 • nga.gov



June Schwarcz: Invention and Variation

A retrospective at the *Renwick Gallery* showcases more than 50 objects by enamel artist June Schwarcz. Known for a distinctive style that combines texture and color with a nod to the California Arts & Crafts movement, Schwarcz worked until 2015, when she passed away at the age of 97.

March 10 to August 27
americanart.si.edu

Chromatic Scale: Prints by Polly Apfelbaum

This exhibit at the *National Museum of Women in the Arts* showcases powerful prints that Polly Apfelbaum methodi-

cally creates using multiple woodblocks—and explores how these prints relate to the American artist's paintings and sculpture.

March 10 to July 2 • nmwa.org

George Condo: The Way I Think, 1966–2016

An exhibit at *The Phillips Collection* delves into the drawings and sketches of George Condo. Born in 1957, the prolific American artist prefers to rely on "painting memory" rather than photographic material to create his imaginative works steeped in abstraction.

March 11 to June 25
phillipscollection.org

Off the Shelf: Modern & Contemporary Artists' Books

A collection of more than 100 books by 50 notable artists, from Pablo Picasso to David Hockney, creates a visual feast at the *Baltimore Museum of Art*. Visitors can savor a collection of animal woodcuts by Raoul Dufy and a volume of lithographs by Andy Warhol and Roy Lichtenstein, to name a few.

March 12 to June 25
artbma.org

East of the Mississippi: 19th-Century American Landscape

Daguerreotypes and albumen prints provide a rare glimpse into America's past in an exhibition in the west wing of the *National Gallery of Art*. The show documents the splendor of America's natural wonders, the rise of industrialization

Congratulations Closets By Design.

Recognized as HOME & DESIGN 2016 Designers Choice Award
Favorite Custom Closet Company



Bob Narod, Photography, LLC

Custom Closets, Garage Cabinets, Home Offices and more...



**20% Off Plus
Free Installation**

20% off any order of \$1000 or more. \$100 off any order of \$700 or more. Not valid with any other offer. Free installation with any complete unit order of \$500 or more. With recurring order at time of purchase only.

Call for a free in home design consultation and estimate

**703-330-8382
301-880-0866**

www.closetsbydesign.com
Licensed and Insured

2009 © All Rights Reserved. Closets by Design, Inc.

HOME



**Closets
byDesign**



ARCHITECTURE

DESIGN

BUILD

M O N A R C H

D E S I G N D . C .

monarchdesigndc.com

DATEBOOK



A luminous creation in glass by Carrie Gustafson, one of 120 artists exhibiting their work at the Smithsonian Craft Show.

and the strife of the Civil War via 175 early photographic images.

March 12 to July 16 • nga.gov

Voulkos: The Break-through Years

The late Peter Voulkos is credited with revolutionizing ceramic forms and techniques. The *Renwick Gallery* showcases works from his early career (1953 to 1968), many of which combine wheel-thrown and slab elements and mix traditional glazes with epoxy paint.

*April 7 to August 20
americanart.si.edu*

Inventing Utamaro: A Japanese Masterpiece Rediscovered

For the first time since they were shown together in the late 1880s at the Paris art market, the *Sackler Gallery* reunites a trio of large-scale paintings by 18th-century artist Kitagawa Utamaro. Depicting the “pleasure quarters” of Edo (present-day Tokyo), they provide exquisite examples of Japan’s ukiyo-e genre.

April 8 to July 9 • asia.si.edu

Frédéric Bazille and the Birth of Impressionism

The *National Gallery of Art* documents Frédéric Bazille’s influence on the rise of Impressionism in this exhibit that displays 75 of the French artist’s paintings. Also on view are works by predecessors who

influenced Bazille (Rousseau and Corot) and his contemporaries (Manet and Monet).

April 9 to July 9 • nga.gov

Georgetown House Tour

Now in its 86th year, this annual event offers design buffs an inside look at eight to 10 of the most spectacular *Georgetown* homes and gardens. Proceeds benefit St. John’s Episcopal Church and its missions. Admission includes afternoon tea.

*April 29
georgetownhousetour.com*

19th Annual Parade of Homes

Participants on this self-guided tour can visit unique custom homes and renovations completed by area builders and developers in *Northern Virginia*. Proceeds benefit HomeAid Northern Virginia, which builds homeless shelters in the region.

April 29 to 30 • vaparade.com

Smithsonian Craft Show

The 35th Smithsonian Craft Show displays the work of 120 exhibitors, from wood and textile artists to apparel and jewelry designers. Held at the *National Building Museum*, the juried show raises funds for the Smithsonian Women’s Committee, which supports 28 museums and research centers via a competitive grants program.

*April 27 to 30
smithsoniancraftshow.org*

—Sharon Jaffe Dan

Beyond quality, design & craftsmanship



STONA

design | interiors | kitchen | bathroom | tile

presents the selective european brands to washington dc metro area



Valcucine
Innovazione per la vita

Miele

**DORN
BRACHT**

GESSI

DURAVIT

Kala Hamij

BERTOLOTTO
PORTE

LAUFEN

3210 Grace st NW suite 102 Washington DC 20007

www.stona.com

T: + 1 (202) 885-9933

HAMMOND
WILSON



Timeless.
Artful.
Architecture.

410 267 6041
hammondwilson.com



Green Front
FURNITURE

**HICKORY CHAIR, HENREDON, HANCOCK & MOORE, THEODORE ALEXANDER,
SHERRILL, TAYLOR KING, HENKEL HARRIS, HARDEN, MOTIONCRAFT, BERNHARDT**

ONE OF THE NATION'S TOP FURNITURE RETAILERS
QUALITY FURNITURE, ACCESSORIES & ORIENTAL RUGS AT DISCOUNT PRICES

Discover what your designer already knows

10154 HARRY J. PARRISH BLVD
MANASSAS VA 20109
703.396.8560

NEXT TO MANASSAS AIRPORT

316 NORTH MAIN STREET
FARMVILLE VA 23901
434.392.5943

OVER 1 MILLION SQUARE FEET UNDER ROOF

GREENFRONT.COM

Carpet Creations & Collage Workroom

Broadloom and Area Rugs
Showroom & Workroom to the Trade Only

5040 Boiling Brook Parkway #B, Rockville, MD 20852
301.881.3399 | carpetcreations@verizon.net | www.carpetcreationsandflooring.com



Alexander Weiss Design Group





CLARK HALL DOORS



MARVIN 
Windows and Doors
Built around you.®

New Construction or Replacement
Full Service Sales & Installation
Call to schedule a pre-construction consultation

THE WINDOWSTUDIO
at CLARK HALL DOORS

703-447-5482 • www.clarkhalldoors.com • 510 Mill Street NE • Vienna, Virginia

PORTFOLIO

labor of LOVE

Dane Austin blends
sophistication with
vintage flair in a
DC condo

BY JULIE SANDERS

PHOTOGRAPHY BY STACY ZARIN GOLDBERG





Adjoining the living space, the lounge area showcases a wall of mirrors made with gilt frames found by the owner in the attic of his previous home. A black iron-and-crystal chandelier hangs above a pair of Nancy Corzine chaises in silk velvet. An accent wall in Coral Red arrowroot grass cloth by Phillip Jeffries picks up the hue of the red-lacquered Chinese chest.



The living room (these pages) showcases a series of watercolor landscapes against a damask wall covering custom-painted by Hernan Gigena. Natural light pours into a niche (opposite), furnished with a Baker dining table and chairs by Swaim.



When Fred Bates moved from a tiny row house in Dupont Circle to an airy, open condo in DC's Mount Vernon Square neighborhood, he traded the innate charm of an older home for builder-grade finishes. A real estate agent at Keller Williams Capital Properties, he turned to interior designer Dane Austin to imbue his new two-bedroom abode with character and beauty.

"Dane got my taste very quickly," Bates says. "The building is modern, and most residents choose really contemporary furniture. But my taste tends toward things with a history and Dane got that."

In a way, the project actually began in Bates's previous house, which had served as an art gallery years earlier. As Austin recounts, his client had discovered "a treasure trove of really cool artwork—watercolors, collected pieces and antique frames" in the attic. Not sure how to use them, the homeowner held onto these discoveries and brought them to his new condo.

"I said 'We have to use these, to share them with everyone,'" Austin recalls. The artwork provided the designer with a jumping-off point for the new space, which

INTERIOR DESIGN: DANE AUSTIN, ASID, IIDA, Dane Austin Design, Washington, DC, and Boston, Massachusetts.



A vintage rug in light blue and red inspired a bold palette in the master bedroom (left). In the adjoining sitting area (below), a settee from Hamilton Furniture is upholstered in Baker fabric, while antique prints and drapes in Schumacher linen finish the space.

he infused with a playful mix of eras and price points in an inviting, eclectic style.

“I really appreciate working with heirloom pieces,” Austin says. “I think good design is a mix of old and new, whether it’s a picture inherited from family, a high-end piece from the Design Center or a store-bought find.”

Among the attic finds was a series of vintage watercolor landscapes, which the designer had framed and hung above the custom velvet sofa in the living area. Maintaining the eclectic vibe, he grouped Art Deco armchairs in Rogers & Goffigon fabric and a cane armchair in Donghia silk around a Niermann Weeks coffee table. French gold-leaf and ceramic table lamps flank the sofa on lacquered-linen side tables with ebonized wood frames.

In the adjoining lounge area, gilt frames from the attic collection have been repurposed as mirrors in all shapes and styles and grouped together. “A wall of mirrors makes an interesting design feature,” Austin says. “I love that they reflect the watercolors across the room over the sofa.” The mirrors are clustered artfully above Nancy Corzine chaises and an antique red-lacquer Chinese chest. Occasional tables from David Iatesta and Holly Hunt, an antique cabinet with cut ionized-aluminum panels and Robert Abbey gold-leaf floor lamps further enliven the space.



A round mahogany dining table designed by Barbara Barry for Baker occupies a curved niche by the wall of windows in the living area. Paired with a Niermann Weeks chandelier and chairs covered in Schumacher linen, the table nestles beside custom sheers and drapes in silk and vintage velvet by Robert Abbey. The niche is one of Bates’s favorite aspects of the new space. “The windows look out onto the street,” he explains, “and I love the way the drapes soften the view.”

In the master bedroom, Austin selected a vintage rug in blue and red tones that would inspire bolder color choices. The custom bedding includes a quilt that picks up the palette of the rug, while a red-lacquered Chinese chest functions as a night table against a custom leather headboard. Bedside pendants with linen shades provide light without taking up surface space.

Throughout the home, Austin implemented pops of color and texture. “I’m kind of terrified of color,” Bates admits, “but Dane did a really good job using it in a way I felt comfortable with.” Though neutral jute rugs keep the attention on the art and furniture, a custom, baroque-style damask was hand-painted on the wall behind the living room sofa. A grass-cloth wall covering by Phillip Jeffries in vibrant red adds warmth to the lounge area, while in the bedroom a green raffia wall covering, also by Phillip Jeffries, creates a perfect background for the room’s bright palette.

The owner is happy with the results of Austin’s labors. “I have an elevator entrance, so people walk right into the apartment,” he relates. “They’re always surprised. It’s a really soothing space.” ❖

Photographer Stacy Zarin Goldberg is based in Olney, Maryland.

Creating More Time, Space and Peace in Your Everyday

The Art of Organization

at its Finest



**NOW
OPEN**

**New Showroom
And Design Center**

8500 Leesburg Pike, Suite 103
Vienna, VA 22182

closetfactory
the art of organization

Closets | Garages | Home Offices
Entertainment Centers | Pantries | Wall Beds | Wall Unit
Craft Rooms | Laundry Rooms | Mud Rooms | Wine Rooms

Call Today for Your Free Design Consultation

703.796.9600

Visit us online at **closefactory.com**



LIFETIME WARRANTY

A Different Kind of Family Portrait



“Chub Life “

4ft x 6ft

acrylic on canvas

Ed

Valerie

Zak

Tucker

Colton

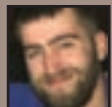
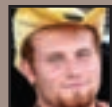
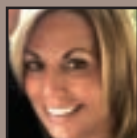
Luke

Boys in 2001

2013

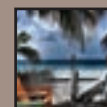
Harlie

Chub Cay



D.A. Sea

Patio



Valerie had seen ads for David Cochran’s Family Portraits for years and was always intrigued. She had a large stone wall in her family room that could be a perfect setting for a painting. Christmas was approaching, and she thought this would be a perfect surprise for her impossible-to-buy-for husband, Ed. She called David and he came out to her Eastern Shore waterfront home to view and measure the wall and figure out a possible direction for the portrait.

Valerie was pleased to find that David uses snapshots of the family as his resource (NO sittings!) and that he could incorporate images from many facets of their lives. The blended family has four boys and a beautiful white bulldog, who is usually the center of attention. David scoured many photos and suggested a triple portrait of the boys at different stages in their lives with the backdrop of a vacation home on Chub Cay in the Bahamas. Valerie and her boys identified their favorite Chub activities: including fishing on Ed’s Sport fishing boat: the D.A. SEA, and jumping off cliffs into the Blue Hole.

David even sketched out a plan for the painting on the spot. Valerie loved the idea—the price and Christmas deadline all seemed reasonable, so she commissioned the painting.

The painting arrived on time and was unveiled on Christmas morning much to Ed’s surprise. He was absolutely floored by this thoughtful depiction of his life.

The painting now hangs above the fireplace. Valerie says, “As I enter the Great Room, I immediately feel my mood lifted. I am literally drawn into this space. I love being reminded of special family memories in a place we call paradise.”

Giclée prints were made of this painting and given to various family members.

The Perfect Anniversary Gift



The painting helps create a warm and inviting place to relax.

Call or Email David with your questions or ideas.

Email: cochranstudios@aol.com Studio: 703.684.7855

Web: www.davidcochran.com

CONTEMPORARY

COLLECTION



Weather Shield®
Windows & Doors
weathershield.com

Photography courtesy of Robert M. Gurney, Architect

Proudly Serving the Washington DC Metro Area



For over 25 years, Quality Window and Door has been representing Weather Shield and their quality collection of products.

Learn more about our expansive offering by visiting one of our convenient showroom locations:

Showroom Locations:

6700 Distribution Dr.
Beltsville, MD 20705

2820 Dorr Ave.
Fairfax, VA 22031

For More Information: 800.301.6602 | www.qwdinc.com

BARBARA HAWTHORN
Interiors LTD.



Photos by Kenneth M. Wyner Photography

McLean, Virginia

703-241-5588 | www.barbarahawthorninteriors.com

PRIVATE TOUR



Michael and Lisa Weiss share a moment on the custom banquette in their breakfast room/kitchen.

FAMILY *affair*

Olympian Michael Weiss applies the drive and precision of a champion skater to his new custom residence in McLean

BY SHARON JAFFE DAN
PHOTOGRAPHY BY BOB NAROD

PRIVATE TOUR





A frameless Lucius fireplace in a wall of porcelain tile separates the kitchen and the family room, where friends often gather to watch TV on a large Kravet sectional. Mid century-style chairs by Caracole, upholstered in white leather, and a wooden bar crafted by Jerry Desantis furnish the adjacent bar room.

PRIVATE TOUR



When he's not pulling off perfect triple lutzers on the ice or hosting star-studded skating shows, two-time Olympian Michael Weiss can be found studying house plans and visiting construction sites. In 2009, the Fairfax, Virginia, native founded Airleen Homes, a high-end residential building company. His largest project to date: the McLean residence he shares with wife Lisa and their children, Annie Mae, 18, and Christopher, 17.

On a gleaming January morning, Weiss was just back from a week on the skating circuit. During the 2017 U.S. Figure Skat-

ARCHITECTURE: SALVATORE BENVENGA, Associate AIA, SB Design Studios, Alexandria, Virginia. BUILDER: MICHAEL WEISS, Airleen Homes, McLean, Virginia. KITCHEN DESIGN: LOIS KENNEDY, Portfolio Kitchens, Reston, Virginia. LANDSCAPE: Verde Scapes, Nokesville, Virginia.



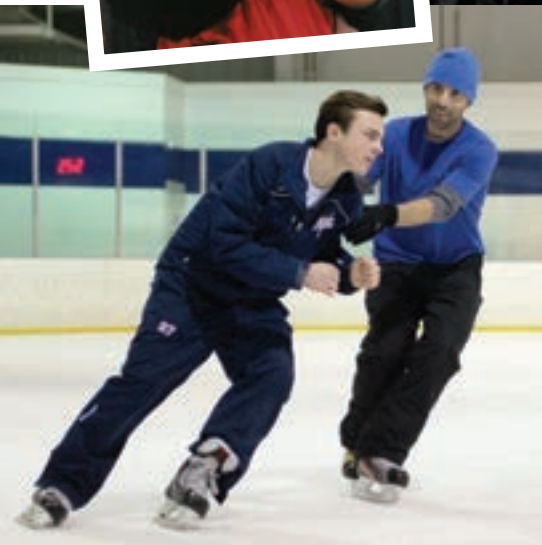
Lisa Weiss selected finishes in the kitchen, where a refrigerator and freezer flank a central pantry; all three are concealed behind stainless-steel panels that resemble retro iceboxes (top). Peter Salerno Inc. crafted the cabinets (above) in contrasting white lacquer and whitewashed butternut wood. Textured concrete tile creates a backsplash behind the Thermador range (opposite).





“Whether it’s hockey or darts or throwing a football, I’m always doing something with the kids.”

—MICHAEL WEISS



ing Championships in Kansas City, he provided live commentary for the online IceNetwork. Then he flew to Ft. Lauderdale to co-host the “Colgate Skating & Gymnastics Spectacular” with fellow Olympian Kristi Yamaguchi (airing on ABC February 18 and March 4). And he still performs, most recently last fall during a weeklong tour in Brazil.

“I love skating and being a part of it,” he says. “Then, coming home I quickly change hats.”

Life in the Weiss residence revolves around a steady stream of visitors—from teenagers jumping on the trampoline to adults celebrating Michael’s recent 40th birthday with a deejay (hidden speakers in the two-story foyer turn it into an instant dance floor). “I love action,” Michael says. “Whether it’s hockey or darts or throwing a football, I’m always doing something with the kids.” The family not only plays but frequently performs together on the annual “Musselman’s Apple Sauce Family Skating Tribute.” While Michael skates, Lisa and Annie Mae accompany him on vocals and Christopher on guitar (the show airs on ABC and their performances can be found on YouTube).

Though they were content in the former home that they built 14 years ago, the Weisses decided to start anew when they came across a lot for sale on a quiet cul-

FAMILY PHOTO © BRITTANY EVANS

Clockwise from top: A room in the Weiss basement contains synthetic-ice flooring so son Christopher can practice shooting pucks. The family performed in the 2015 “Family Skating Tribute.” Weiss’s home gym displays a collection of medals, an Olympic flag, a skate blade he used in the 2002 Salt Lake City games and the Olympic torch he carried through Alexandria that year. Father and son train at a Reston rink. Tiny Annie Mae joined Michael at the 2000 U.S. National Championships, where he scored his first-ever, perfect 6.0 and won his second national title.



Redefine Boundaries

When it comes to sliding and folding doors for dramatic openings, we've got you covered. As part of the Andersen family of products, Weiland is the innovator in large door and window openings.



weilandslidingdoors.com

LIFTSLIDES | BIFOLDS | WINDOW | PERFORMANCE RATINGS



ANDERSEN PRODUCTS AVAILABLE AT TW PERRY:
ANNAPOLIS, MD - BALTIMORE, MD - SILVER SPRING, MD
GAITHERSBURG, MD - LEESBURG, VA - SPRINGFIELD, VA

www.twperry.com 1.888 TW PERRY (897-3779)



PRIVATE TOUR



The home's stone-covered front entry (right) leads into a two-story foyer (above, left), which opens to the dining room. The mirror is from Z Gallerie. Lisa, who owns the Wine Cellar Company, designed the wine room (above, right). Accommodating 350 bottles, it features a custom door and center display made from Elmwood Reclaimed Timber.

de-sac nearby. Lisa, whose Wine Cellar Company designs and installs custom wine rooms, had just completed a project in a client's Alabama vacation home and was inspired by its French Country aesthetic.

The couple hired Alexandria architect Salvatore Benvenaga to design their new home. "The house is a contemporary take on French Country style," explains Benvenaga. "We took classic elements of the look and simplified them while still capturing the essence."

In decorating the interiors, Lisa put a contemporary spin on rustic style, adding a subtle dose of glamour. "Our former home was extremely traditional," she explains. "We wanted to make this more modern—sort of rustic contemporary." She honed in on comfortable, durable furniture and a neutral color palette enlivened with sparkle, from the Ralph Lauren metallic paint treatment in the dining room to the crystal-stud-



ded pendant lights over the kitchen island. "I love crystals," Lisa admits.

The main level features a large, airy family room flanked by the expansive kitchen on one side and a bar room—the Weisses' answer to a formal living room—on the other. There's also a wine room of Lisa's design, a game room and a large office that the couple shares. The lower level houses a finished living area, play spaces and even a skating room with a synthetic-ice floor where Christopher, a hockey player, can practice shooting. The upper floor accommodates four bedrooms and a well-equipped gym.

Michael grew up immersed in sports. His parents were champion gymnasts; his father competed in the 1964 Tokyo Olympics. Michael's sister Genna excelled at diving while he and sister Geremi climbed the ranks in figure skating.

In the 1990s, Weiss's mother Margie was taking an aeroba-funk class and introduced Michael to her instructor, jazz dancer Lisa Thornton, with at least one mission in mind. As Lisa now recalls, "He refused to take dance classes and Margie thought I could help him with artistry. Slowly over time, we fell in love."

After they wed in 1997, Lisa continued



Specialty Brick Porcelain

Ceramic ♦ Porcelain ♦ Natural Stone ♦ Glass ♦ Metal

As the ultimate Mid-Atlantic destination for tile and stone products, Best Tile's professional design services and superior quality will achieve your vision. From trend setting porcelains and vibrant glass mosaics to the most elegant stone designs, Best Tile offers the area's largest selection of American and European products. Come visit a Best Tile showroom - the meeting place for designers and homeowners!

BEST TILE®

   BestTile.com

ROCKVILLE, MD
11601 Boiling Brook Pkwy (301) 984-3399

COLUMBIA, MD
6822 Oak Hall Lane (410) 381-1169

LORTON, VA
8196 Terminal Road (703) 550-2352

RICHMOND, VA
7490 West Broad St. (804) 672-6316

PRIVATE TOUR



to choreograph programs for Michael—a three-time U.S. champion and two-time World Bronze medalist. He skated in the 1998 and 2002 Olympics, ranking seventh in both. And over a 16-year period, he toured with “Champions on Ice” and “Stars on Ice.”

A segue from the glamour of pro skating to the grit of construction may seem like an unlikely leap. But, says Michael, both pursuits require “hard work, discipline and determination. These characteristics, which I learned through skating, can be applied to a business, a relationship or anything you want to accomplish.”

Lisa and Michael have passed this philosophy on to their kids. Annie Mae, a freshman at Penn State, played travel soccer in high school and Christopher plays U18 hockey with the Skipjacks in Pennsylvania. As Michael explains, “I tell my kids whether or not they become Olympic athletes doesn’t matter. The most I got out of skating was not necessarily the medals. It was the fact that you learn so much about challenging and testing yourself.”

In 2006, Michael launched the Michael



Weiss Foundation to help aspiring athletes put their own skills to the test. “When I was young, my parents struggled to keep me training,” he recalls. “So I decided if I was ever in position where I could give back, I would.” Through annual ice shows

held in local arenas, the foundation has awarded nearly \$850,000 in scholarships to dozens of skaters, including Olympians Ashley Wagner and Mirai Nagasu and 17-year-old Nathan Chen—who Weiss watched take first place at the 2017 U.S. Nationals in January. Chen, 17, is the first skater to complete five quadruple jumps in a single program. “It was pretty amazing to see him skate, let alone call it,” says Weiss, whose foundation has been supporting Chen financially since 2009.

Weiss, who also coaches hockey hopefuls in power-skating, is grateful for the opportunities the sport has afforded him, and enjoys passing on the lessons he’s learned. “For years, I skated six hours a day, six days a week. It was a full-time commitment,” he reflects. “There are really tough days that aren’t fun. But then you go out and get a standing ovation. All the hard work, sweat and tears are worth it when you realize you did your best.” ❖

Photographer Bob Narod is based in Herndon, Virginia.



Henredon chests and art from Z Gallerie grace the master suite (opposite, top). Lisa Weiss designed the master bath (this page) with a custom vanity by Jerry Desantis, Calacatta Gold marble flooring from Marble Systems and a Eurofase chandelier made of hand-blown glass orbs filled with crystal beads. Her dressing room (opposite, bottom) features a Cambria-topped island.

VACATION STYLE LIVING™

A HOME FOR LIFE





EXCELLENCE IN LANDSCAPE

A Grand Award for Outdoor Living Area (Design/Build) went to Surrounds, Inc., for a lush landscape, complete with pool and water feature.

© FRANK RUGGLES

Each fall as cooler weather socks in, members of the landscaping industry gather to celebrate a sunnier time of year with the “Excellence in Landscape” awards. Sponsored by the Landscape Contractors Association (LCA) of Maryland, DC and Virginia, this annual competition is judged by industry experts, who vote in more than a dozen residential and commercial categories. On the following pages, we highlight four winning entries. These innovative projects reflect the finest in landscape design, with inviting outdoor kitchens and fireplaces, spectacular pools and lush plantscapes—in a range of styles and colors guaranteed to get you in the mood for spring. On page 108, we list all the 2016 residential LCA award winners.



In a Decade Award-winning project by McHale Landscape Design, pink azalea, lilac and white deutzia impart color to the croquet lawn of a serene Easton, Maryland, property.



Award-winning landscape designs celebrate the arrival of spring

THE GREAT OUTDOORS

BY KAREN A. WATKINS



GRAND RETREAT

A stately garden by McHale Landscape Design complements an 1820 home in Easton

Homeowners with a faulty fountain called on Hans Bleinberger of McHale Landscape Design to fix it—beginning a close and enduring collaboration. Bleinberger went on to refine several acres of their 90-acre property—and the result was a grand retreat complete with manicured boxwood hedges, spacious lawns and walking paths connecting the ivy-covered 19th-century house with its Leeds Creek locale.

“The garden is about form, lines and structure,” says Bleinberger. A grassy path, accented by decorative limestone plinths, English yew and dwarf Burford holly, leads to a fountain surrounded by distinct quadrants: a rose garden, an exotic garden, a croquet lawn and a free-form “wilderness” area.

A circular lawn frames two pairs of semicircular white gravel beds in the exotic garden lined with manicured boxwood. The beds hold tropicals such as palms and citrus that bask in the sun-room in cold weather.

Bleinberger rearranged existing plants, grouping crape myrtles by color. A pink clump accents a vintage gazebo where a garden bench invites visitors to pause and enjoy the landscape. An existing Japanese snowbell in the rose garden now shines amid red knockout roses and a crimson barberry hedge.

A red-cedar allée provides shade around the perimeter of the garden. “At the end of the day,” Bleinberger says, “the purpose was a meditative garden used for walking and observing.”

.....
Award: Decade Award, Residential Maintenance. Landscape Design: Hans Bleinberger, McHale Landscape Design, Upper Marlboro, Maryland.

Continued on page 78





McHALE LANDSCAPE DESIGN

Grand Award: Outdoor Living Area



Photos © John Spaulding Photography

This challenging rear yard site initially contained steep slopes and poor drainage, which triggered the need for a total landscape makeover that would provide functional outdoor living spaces for the clients. They requested a complete, multi-use outdoor entertainment area suitable for small family gatherings or larger neighborhood parties. The existing deck was demolished and replaced with one of mahogany, elevated and embellished with architectural details that complement the architecture of the home. The deck structure features a grill counter, a storage room and a finished space below that provides a shaded place to relax. Additionally, a travertine patio was constructed that transitions to the pool terrace, elevated several steps up. The terrace is framed by a stone retaining wall and colorful ornamental plantings providing continual interest throughout the year.

SPECIAL FEATURES

- The angle of the pool mimics the deck architecture, linking the two features together
- Terracing beyond the pool provides a kids' play space and a path to the neighbors.
- Subtle details such as different paving patterns distinguish between terrace levels
- The patio spaces allow for multiple entertainment uses

McHALE LANDSCAPE DESIGN

6212 Leapley Road, Upper Marlboro, Maryland 20772

301-599-8300 — mchalelandscape.com

The completed project has transformed the owners' lifestyle, with spaces from which to enjoy everything from morning swims to summer gatherings in the backyard with friends.



*Fine properties require
exceptional garden care...*



WITH OUR MAINTENANCE
YOU GET EXACTLY THAT.

SINGLE SOURCE
**DESIGN
+
BUILD**

LANDSCAPE
MASONRY
CARPENTRY
MAINTENANCE
CONSTRUCTION

*Winner of:
9 Grand, 2 Heritage, 4 Decade, 3 Distinction,
& 1 Honorable Mention Awards
in 2015 for Excellence in Landscape.*

*Given by the
Landscape Contractor's Association MD-DC-VA.*

McHALE LANDSCAPE DESIGN

MAIN: 301.599.8300 ■ EASTON: 410.770.9449
MCLEAN: 703.760.8600 ■ ANNAPOLIS: 410.990.0894

mchalelandscape.com









RUSTIC + REFINED

Wheat's Landscape updates a McLean property with lush greenery and a clean-lined aesthetic

When Joshua Dean of Wheat's Landscape arrived to revamp a McLean landscape, he found a soggy yard with languishing trees and a few ferns in full sun, a pool in need of an overhaul and no focal point. The owners requested a contemporary, refined look and improved views from their kitchen window.

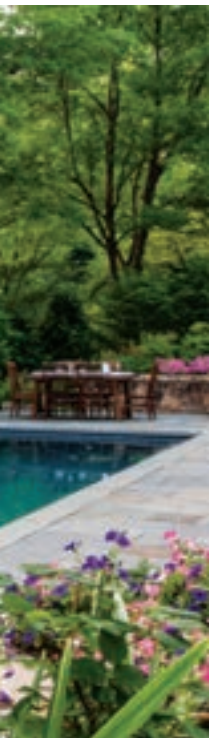
Now, a wisteria-covered, semicircular stone-and-wood arbor draws the eye. An existing fire pit occupies the space beneath it, adjacent to the pool deck. Lush greenery and an array of purple and pink salvia and variegated Japanese iris impart vibrant color and texture. A bank of Green Giant arborvitae provides privacy from the neighbors.

"I wanted to make sure the garden felt clean and contemporary the way the rear of the house does," Dean says. "When you're in any of the social spaces, it feels intimate. The purpose was to make it inviting."

Dean regraded the site and reshaped the pool deck, replacing 2,500 square feet of concrete pavers with flagstone for an updated look. He capped the walls throughout the property with West Virginia stone. Rustic stone accents the arbor, fire pit and paths. A variegated Kousa dogwood stands out in a hedge of skip laurels, positioned to conceal pool equipment. Stained concrete containers filled with annuals add color. A play area for the owners' kids features a lawn, paths and a portable sand table.

Award: Grand, Outdoor Living Area (Design/Build). Landscape Design: Joshua Dean, Wheat's Landscape, Vienna, Virginia. Photography: George Brown Photography.

Continued on page 86





WALNUT HILL LANDSCAPE COMPANY

Setting the standard for creating outdoor spaces

For a waterfront project near Annapolis, a design team including the architect, landscape architect and builder all opted to have one contractor complete the stonework both inside and outside the home. They hired Walnut Hill for the job, which required selecting more than 90 tons of stone in five different types and styles, all blended to create a distinctive finished product. Walnut Hill's masons carefully cut every piece of stone for the veneer individually to ensure a tight fit. Thermal-edged bluestone was used for each door and window opening as well as for accents inside the home. Each opening was carefully measured in the field and compared to architectural drawings for accuracy. Full-color, natural cleft flagstone was used for all flat surfaces.

SPECIAL FEATURES

- Bluestone slabs recessed into the stone serve as diving platforms for the pool
- An intimate seating area surrounds a fire feature
- A water feature boasts basins with granite and Mexican beach pebble inlay
- Copper scuppers above the granite inlay create visual interest



Photos © David Bourroughs

WALNUT HILL LANDSCAPE COMPANY

1563 St. Margaret's Road, Annapolis, Maryland 21409
410-349-3105 — walnuthilllandscape.com

Water and land blend harmoniously in a unique landscape on the banks of Chesapeake Bay's Harness Creek, aptly named Aqua Terra.





CAMPION HRUBY LANDSCAPE ARCHITECTS
PURPLE CHERRY ARCHITECTS
PYRAMID BUILDERS

Desire. Craft. Experience



Walnut Hill
LANDSCAPE COMPANY

Annapolis | 410.349.3105 | Easton | 410.690.0977

www.WalnutHillLandscape.com    



SURROUNDS INC.

Grand Award: Total Residential Contracting



Photos © Morgan Howarth

Surrounds created a master plan for a Vienna residence and completed the project in two phases. The first entailed a new paver driveway and inviting front-door entryway; extensive landscaping and low-voltage lighting for curb appeal and year-round interest; and stone walls and hedges that maintain a neat, clean appearance. Phase two was the backyard, which featured a pool and a modern pool house conceptually designed by Surrounds to complement the landscape and house. The result is a resort-like feel, with expansive travertine terraces; a large outdoor kitchen with two grills in the pool area; and a fire table with additional seating. An expansive manicured lawn wraps around the pool area, a high school-size basketball court and an enclosed vegetable garden. This space was designed for entertaining as well as family.

SPECIAL FEATURES

- A symmetrical entrance courtyard welcomes guests to the home
- A travertine walkway adjacent to the home leads to the backyard
- An expansive travertine pool deck with a fire table surrounds the pool
- Multiple terraces, a pool deck and lawn stairs lead to a lush lawn

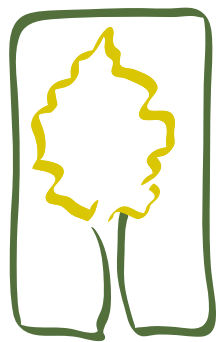
SURROUNDS INC.

21580 Blackwood Court, Sterling, Virginia 20166
703-430-6001 — surroundslandscaping.com

An expansive, private, resort-style landscape with a modern feel, complete with every luxurious amenity anyone could want.







SURROUNDS
LANDSCAPE ARCHITECTURE + CONSTRUCTION



BLANK SLATE

Surrounds, Inc., transforms a flat, empty Leesburg property into a pastoral retreat

Clients building a custom home in Leesburg, Virginia, tapped landscape architect Chad Talton of Surrounds, Inc., to join the design team early on and create an overall outdoor plan from scratch. He helped site the house and devised a design that would regrade the flat lot to avoid drainage problems.

What was once an empty field is now an expansive, peaceful landscape distinguished by boxwood hedges, large trees and serene gardens—all centered around a pool and a pool house that mirrors the French Country style of the main home. “The clients wanted a very manicured space,” Talton explains. “We tried to keep it relatively clean and provide screening from other houses, but also keep it open.”

Visitors are greeted by yellow roses and an ever-changing array of annuals. Sweeping green lawns in the backyard hide a geothermal heating system while creating play space for the clients’ children. Fountain grasses, liriope, astilbe and Russian sage impart texture and color.

An allée of Natchez crape myrtles amid a bank of hydrangeas flanks the path from the garage to the backyard. A fountain beckons visitors making their way to the pool in back.

The pool house, designed by Talton, features stone accents and a tongue-and-groove pine ceiling. It houses a wet bar, refrigerator and changing rooms. Travertine keeps the pool deck cool, with bluestone edging for contrast. Integrated lighting and arcs of water from built-in deck jets enhance the ambience.

.....
Award: Grand, Total Residential Contracting (Design/Build). Architecture & Construction: Creighton Enterprises, Inc., Leesburg, Virginia. Landscape Architecture: Chad Talton, RLA, ASLA, Surrounds, Inc., Sterling, Virginia. Pool & Fountain Basin: Town & Country Pools, Inc., Springfield, Virginia. Photography: Morgan Howarth.

Continued on page 94







KANE LANDSCAPES, INC.

Grand Award: Outdoor Living Area



Photos: Top, left © Brandon Ting, Top right & bottom: © Brian Nemiroff

The owners of an Oak Hill, Virginia, property contacted Kane Landscapes to reconstruct their landscape, which was channeling water continually into their basement. Senior landscape architect Alan Blalack developed a design that would resolve the drainage issues while also rebuilding the screened porch and creating several outdoor entertainment and living areas. Now, the basement walls are waterproofed and a pump vault protects the foundation. A serpentine retaining wall at the rear property line keeps runoff from the neighboring property at bay. An outdoor room leads to a large patio with a fireplace and outdoor kitchen/bar area framed by arbors, while a smaller patio overlooking a vegetable-and-herb garden is perfect for family dinners. LED lighting and a sound system keep parties going well into the evening.

SPECIAL FEATURES

- The rebuilt porch features a vent-free fireplace, hidden automatic screens and an AV system
- The patio for entertaining contains natural-stone sitting walls, a fireplace and an outdoor kitchen/bar
- An intimate family dining area with a grill island
- A classically designed vegetable garden situated close to the home's main kitchen

KANE LANDSCAPES, INC.

PO Box 650369, Potomac Falls, Virginia 20165
703-803-3146 — kanelandscapes.com

This award-winning landscape boasts entertainment areas for parties of all sizes. Each space is distinct, yet united by natural-stone walls, travertine flooring and graceful paths through lush plantings.

Create Envy



Kane
LANDSCAPES, INC.

703-803-3146 www.KaneLandscapes.com



WHEAT'S LANDSCAPE

Grand Award: Outdoor Living Area



Photos © George E. Brown Photography

Inspired by gardens from the Arts & Crafts movement, this garden is grand and formal, yet intimate and inviting.

Wheat's designed and built this contemporary Arts & Crafts-style garden for a client with a large lot in Vienna, Virginia. The site provided an ideal opportunity to create a continuous, level living environment. The space is defined on the garden's main axis by a custom armillary created by English sculptor David Harber. The spa and pool sit at one end of the axis, while a stone fireplace dominates the other. The cedar arbor extends to the edge of the formal lawn, which in turn joins long-blooming perennial borders. An herb garden surrounds the armillary, its layout a study in repetition and symmetry. Herbs and flowers strain to escape its confines and structure. The formal lines of the design are softened by vibrant plantings—a tension that creates this garden's beauty.

SPECIAL FEATURES

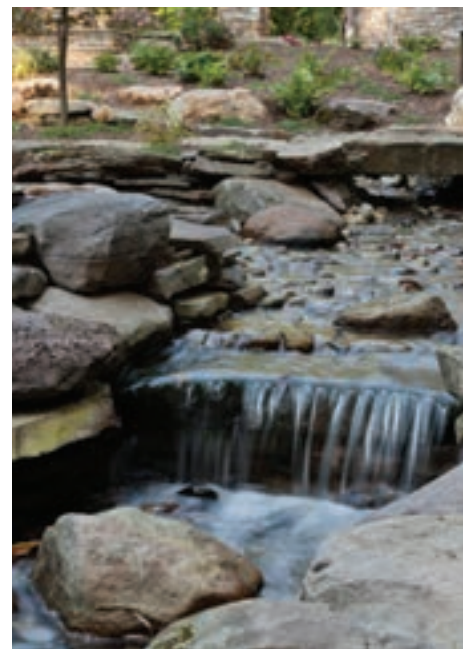
- A long, rustic cedar arbor provides a home for wisteria and climbing roses
- The pool features a raised spa, waterfall, automatic cover and luminous pebbled interior
- The armillary is engraved with song lyrics and dates and places personal to the owners
- Custom masonry enhances the spa, herb garden and towering outdoor fireplace

WHEAT'S LANDSCAPE

8620 Park Street, Vienna, Virginia 22180

703-641-4790 — wheats.com





PROFESSIONAL GROUNDS, INC.

Imagine living in your outside space

Professional Grounds, Inc., is a full-service landscape design/build and maintenance firm dedicated to providing superior client service and a top quality end product. Started in 1974, PGI has proudly served more than 50,000 homes and communities in the DC and Northern Virginia areas. We are a family- and veteran-owned company that prides itself on its team of diverse and talented people who are as excited about creating your perfect outdoor space as you are. Our staff includes landscape architects, designers, horticulturists, agronomists, masons, gardeners and more. We are set up to service all levels of project, from small metropolitan spaces to large suburban estates and everything in-between! Our award-winning work speaks for itself and our dedicated and passionate staff is committed to excellence.

SPECIAL FEATURES

- Pool deck redone and expanded with natural pavers. Seat walls, steps and planter boxes better define the area
- Outdoor pavilion with full kitchen, bar and dining room, fireplace and heaters, and media room
- Zen garden with 70-foot, three tiered water feature, walking path and custom-made foot bridge
- Over 250 landscape lighting fixtures enhance all outdoor areas including the home's newly veneered stone exterior

PROFESSIONAL GROUNDS, INC.

7955 Angleton Court, Lorton, Virginia 22079

703-339-0600 — progrounds.com



Photos © George Brown Photography

Our clients dreamed of the ultimate outdoor entertainment space for their home. We created an elaborate landscape boasting features that can be enjoyed 365 days a year!

*Landscaping Your Lifestyle...
Since 1974*



DESIGN | BUILD | MAINTAIN

Serving the Northern Virginia and D.C. Areas

**PROFESSIONAL
GROUNDS, INC.**

7955 Angleton Court
Lorton VA 22079

703.339.0600

www.progrounds.com





FRENCH FLAIR

Designs for Greener Gardens gives an Annapolis property an elegant makeover

The owners of a home overlooking an Annapolis creek called on landscape designer Nancy Lowry Moitrier and her husband, Pierre Moitrier, to integrate disparate elements of their property. Their goal was to create a formal, French-style garden with clipped hedges and parterres, but with unexpected touches that would communicate a sense of fun.

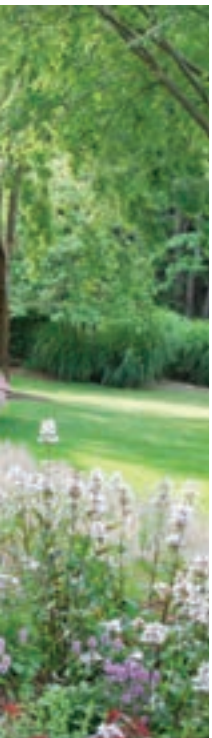
“Their personality as a couple is gregarious and refined; they wanted a garden to reflect that,” says Lowry Moitrier. The landscape boasts a crape myrtle allée, a manicured holly hedge and boxwood parterres surrounding beds of roses. Each year, the owner plants hundreds of annuals and rare specimens such as Char treuse Tiger Eyes sumac and Black Lace elderberry in containers throughout the property. A large Portuguese urn is the focal point of the allée, surrounded by a bed of flowers and succulents which Lowry Moitrier sometimes shapes into tapestry-like forms.

A lush perennial border of knockout roses, Autumn Joy sedum and lady’s mantle adds lively color to the existing bluestone pool deck. Large containers display tropical smoke bush, which adds dazzling color to sedum, coleus and agastache.

A trio of Dawn redwood trees stands 60 feet high in the entry garden. Bold tropicals such as Angel’s Trumpet add a whimsical touch. Vertical garden sculptures shaped like finials can be seen from the home’s library windows; they draw the eye out to the garden and the creek beyond. ❖

.....
Award: Decade, Residential Maintenance. Landscape Design: Nancy Lowry Moitrier, APLD, Pierre Moitrier, Designs For Greener Gardens, Inc., Annapolis, Maryland. Photography: Nancy Lowry Moitrier.

Writer Karen A. Watkins is based in Bethesda, Maryland.





FINE EARTH LANDSCAPE, INC.

Award of Distinction: Outdoor Living Area



Photos © Hilary Schwab

We worked closely with clients to create this little resort-at-home for an active family to enjoy. Features include space for their son and his friends to frolic in the pool, play sports in the backyard and feast on summer cookouts. The pool and its surrounding walls, rocks and gardens can be viewed year-round from the large windows of the family room and kitchen. Plantings were chosen for a procession of color from March through November, and positioned so that they can be enjoyed individually without overgrowing and covering the rocks. Dad's "90 feet of turf" for ball playing doubles as a gentle swale that directs rain runoff around the terrace and pool. A stone fire pit offers a gathering spot for evenings both warm and cool.

SPECIAL FEATURES

- The dark-hued swimming pool boasts an elevated spa and spillover waterfall
- A large flagstone terrace with limestone border matches the existing sunroom
- A hillside garden offers colorful plantings mixed with natural boulders
- Ninety feet of playing turf also channels runoff around the terrace and pool

A pool, spa and terrace for mom and dad to relax, plus colorful gardens and a grassy area for kids. Why go away when there's a family resort in your own backyard?

FINE EARTH LANDSCAPE, INC.

16815 Budd Road Poolesville, Maryland 20837
301-972-8810 — fineearth.com

AWARD WINNING
FINE EARTH LANDSCAPE
DESIGN / INSTALL



SERVING THE METROPOLITAN AREA FOR 40 YEARS

Professional Landscape Design Beautiful Plantings Patios, Terraces and Walkways
Masonry and Wood Walls Wood Decks and Arbors Ponds and Waterfalls

DC/MD/VA 301-983-0800
WWW.FINEEARTH.COM

Licensed Bonded Insured



BOTANICAL DECORATORS

Landscape Architecture • Design-Build-Maintenance

The owners of this historic Alexandria home wanted a property that spoke to a bygone era. Every detail evokes a sense of timeless beauty, while the design is intended to mature into a true estate-style garden. Yet behind all the evocative details, modern-day advances make the landscape function even better than it looks. In the interests of sustainability, the water from both the house and all the paved surfaces is captured in huge underground cisterns, then used for irrigation. The landscape offers a spot from which to enjoy every season. Whether it be spectacular garden parties in spring, sunny summer days by the pool or crisp, fall or winter days nestling by the outdoor fireplace, this landscape is always paradise.

SPECIAL FEATURES

- Twin pool houses accommodate a kitchen in one and changing room and bath in the other
- A formal, circular perennial garden centers around an iron fountain and a koi pond
- Custom gates and railings boast outstanding quality and craftsmanship
- State-of-the-art low-voltage lighting, irrigation and audio systems save time and money

BOTANICAL DECORATORS

5011 Olney-Laytonville Road, Suite B, Olney, Maryland 20832
240-406-9776—botdec.com



Photos © Roger Foley

This spectacular property designed by Botanical Decorators is one of the area's most beautiful—and the memorable site of many philanthropic events.

Outdoor Living



Call Botanical Decorators to begin planning your own private oasis



BotanicalDecorators™

OUTDOOR LIVING SPACES | LANDSCAPE MASTER PLAN
POOLS | STONE WORK | DECKS | LANDSCAPE LIGHTING

WWW.BOTANICALDECORATORS.COM p.240-406-9776



JENNIFER CONNOLEY LANDSCAPE DESIGN

Grand Award: Outdoor Living Area

This circa-1750 plantation house has an 18th-century themed design. Four symmetrical raised beds create a central and cross axis, while wide steps align with the pool and pool house to unify the upper and lower spaces. Both walls and steps provide seating. Ivory-colored travertine pavers were used in the patio as an alternative to brick; they are not hot underfoot and have a less formal feel. Neutral fieldstones were dry-stacked for garden walls. The effect is that of an old garden: rustic, warm and in keeping with the home's historic bones.



JENNIFER CONNOLEY LANDSCAPE DESIGN

410-200-1563 — jcd-landscapedesign.com





SCAPES, INC.

An award-winning design/build landscape company

Homeowners hired Scapes, Inc., to remove their worn-out back deck and design an expanded outdoor-living space in which to enjoy spring, summer and fall. The designers added an upper-level deck off the master suite; below it, a covered living space boasts automatic screens between the deck columns to allow for bug-free relaxation. A stacked-stone outdoor fireplace anchors the adjacent patio, which is flanked by convenient niches for wood storage. Attached to the fireplace structure, a kitchen area with a grill and cabinetry offers plenty of space for food prep, allowing the homeowners to entertain with ease. Sitting walls along the perimeter of the patio eliminate the need for additional sitting when guests are there, while also framing the patio.

SPECIAL FEATURES

- Automatic screens on the covered porch provide an unobstructed view of the patio and an insect-free environment
- A wood-burning fireplace with a gas ignitor anchors one end of the patio
- A large outdoor kitchen offers everything the clients need to entertain
- A private deck is accessed from the master suite

SCAPES, INC.

410-867-6909 — scapesinc.net



Photos © Jeff Crandell

A new patio and deck combination resulted in a beautiful outdoor living space. The owners now have a backyard where they can relax and entertain family and friends.

Outdoor and much more



From patios that dazzle to fireplaces that sizzle, only Stone Center has everything you need to make the good life even better. Get inspired by our stunning line of EP Henry products, available in spectacular colors and styles. Every EP Henry paver is American made and built to last – featuring a hassle-free lifetime warranty. Let us help you with every detail, including ideas, design and installation.



FREE!
Inspiration Guide

EPHENRY®
Values that Endure™



NOVA

703-393-2828

Fredericksburg

540-891-7866

Richmond

804-343-3505

StoneCenterofVA.com

©2017 Stone Center



703 243 5982 www.gardenwise.co



LIVE GREEN LANDSCAPE ASSOCIATES

Award of Distinction: Outdoor Living Area



Photos © Roger Foley

A homeowner wished to take advantage of the panoramic views from his backyard. He approached Live Green for help with an unfinished patio on which work had been abandoned. Upon inspection, it became clear that the columns and steps installed by the previous contractor had footers that were too shallow and would have to be torn out and redone. Live Green removed the poorly constructed hardscape and replaced it with a sweeping bluestone patio delineated by a graceful, curving seat wall made elegant by capped columns. The spacious patio and expansive lawn convey a sense of openness to the property, and provide ample space for entertaining large groups of guests—as well as for enjoying a simple, relaxing dinner with the family.

SPECIAL FEATURES

- The patio is made of natural Pennsylvania bluestone laid on a mortar setting bed
- Low curved walls help to frame the patio and provide built-in seating for guests
- The stone veneer on the walls complements the color range in the patio and brick on the house
- Wide, rounded stairs provide a comfortable transition from house to patio

LIVE GREEN LANDSCAPE ASSOCIATES, LLC

6 Gwynns Mill Court, Owings Mills, Maryland 21117

410-833-9640 — livegreenlandscapes.com

An all-natural, multi-colored bluestone patio had a rough beginning but soon became the beautiful outdoor living space the homeowner had always dreamed of.



LA LEWIS AQUATECH
ELEGANT OUTDOOR LIVING

LEWIS-AQUATECH.com

703.631.2800 | 301.881.9066

Custom Swimming Pools • Landscapes • Pool Houses
Pergolas • Terraces • Outdoor Kitchens • Fireplaces • Renovations





Now this is a *great* room.
Design and custom installation of outdoor lighting



Graham Landscape Architecture
Photo: Allen Russ Photography

Congratulations 2016 LCA award winners!

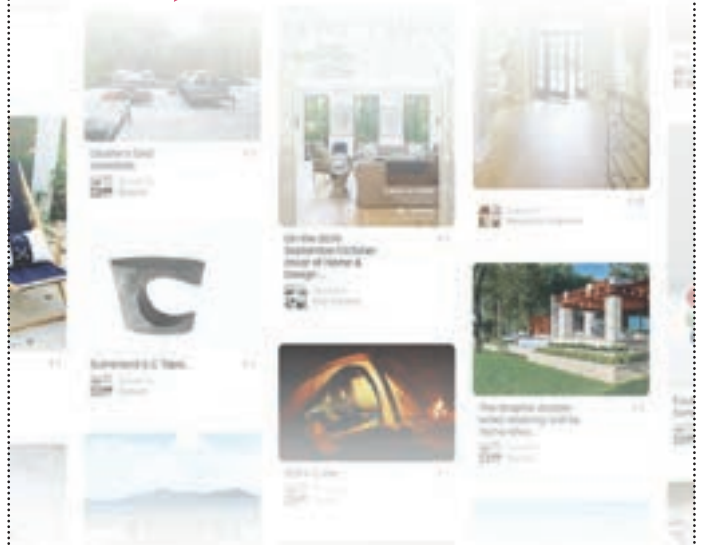
For nearly 20 years, we have been proud to work closely with the region's leading landscape professionals on hundreds of LCA award winning projects.

outdoorillumination
INCORPORATED

www.outdoorillumination.com • 888.336.4999



Like Us!
Pin Us!



Come see what's **PIN**-worthy from the pages of HOME&DESIGN Magazine



CONTACT US AT:
WWW.DECKSCAPESOFVA.COM
PH: 703-365-0747



Decksapes of Virginia L.L.C.

DECKS - PORCHES - PATIOS - OUTDOOR KITCHENS - POOLS - LANDSCAPING - LIGHTING

Located Just North of the Manassas Battlefield
5003 SUDLEY ROAD, CATHARPIN, VIRGINIA 20143





Clockwise from top: Jennifer Connoley Landscape Design, Grand Award for Outdoor Living Area; Land & Water Design, Inc., Grand Award for Outdoor Living Area (Design/Build); Fine Earth Landscape, Distinction Award for Outdoor Living Area; Kane Landscapes, Inc., Grand Award for Outdoor Living Area (Design/Build); and GardenWise, Inc., Distinction Award for Outdoor Living Area (Design/Build).



2016 Residential Excellence in Landscape Awards

DECADE

DESIGNS FOR GREENER GARDENS, INC. *greenergardens.net* — *French Estate, RESIDENTIAL MAINTENANCE.

McHALE LANDSCAPE DESIGN, INC. *mchalelandscape.com* — *Knightly Estate, RESIDENTIAL MAINTENANCE; Annapolis Residence, TOTAL RESIDENTIAL CONTRACTING.

HERITAGE

McHALE LANDSCAPE DESIGN, INC. *mchalelandscape.com* — Spring Hill Residence, TOTAL RESIDENTIAL CONTRACTING/CRAFTSMANSHIP.

GRAND

COLAO & PETER OUTDOOR ENVIRONMENTS *colaostone.com* — Georgian, Alexandria, CRAFTSMANSHIP (DESIGN/BUILD); French Living, Great Falls, CRAFTSMANSHIP (DESIGN/BUILD).

GROW LANDSCAPES, INC. *growlandscapes.com* — Leesburg Front Courtyard, FRONT RESIDENTIAL PLANTING AND ENTRANCEWAY (DESIGN/BUILD).

JENNIFER CONNOLEY LANDSCAPE DESIGN *jclld-landscapedesign.com* — Bell Property, OUTDOOR LIVING AREA.

KANE LANDSCAPES, INC. *kanelandscapes.com* — From Flooded to Fabulous, OUTDOOR LIVING AREA (DESIGN/BUILD).

LAND & WATER DESIGN, INC. *landandwaterdesign.com* — Rockville, Maryland Backyard Retreat, OUTDOOR LIVING AREA (DESIGN/BUILD).

*Projects featured in this issue.

Photos, clockwise from opposite, top left: © Jennifer Connoley; © George Brown Photography; © Hilary Schwab; © Brian Nemiroff; © Michael K. Wilkinson

McHALE LANDSCAPE DESIGN, INC. *mchalelandscape.com* — McLean Residence, CRAFTSMANSHIP; Thunder Residence, CRAFTSMANSHIP; Solitaire Lane Residence, OUTDOOR LIVING AREA; Crest Lane Residence, FRONT RESIDENTIAL PLANTING AND ENTRANCEWAY; Fairfax Residence, CRAFTSMANSHIP; Davidsonville Residence, OUTDOOR LIVING AREA; Country Club Residence, FRONT RESIDENTIAL PLANTING AND ENTRANCEWAY; Lorton Residence, OUTDOOR LIVING AREA; Coachway Residence, OUTDOOR LIVING AREA; Potomac Residence, CRAFTSMANSHIP.

PLANTED EARTH LANDSCAPING, INC. *plantedearthlandscaping.com* — Potomac Residence, TOTAL RESIDENTIAL CONTRACTING; Baltimore Rooftop Garden, OUTDOOR LIVING AREA; Lancaster Garden, RESIDENTIAL MAINTENANCE; Alexandria Residence, TOTAL RESIDENTIAL CONTRACTING.

SURROUNDS LANDSCAPE ARCHITECTURE *surroundslandscaping.com* — *Grenata Preserve, TOTAL RESIDENTIAL CONTRACTING (DESIGN/BUILD); Bhungalia Residence, TOTAL RESIDENTIAL CONTRACTING (DESIGN/BUILD); Ellison Residence, TOTAL RESIDENTIAL CONTRACTING (DESIGN/BUILD). Soobert Residence, OUTDOOR LIVING AREA (DESIGN/BUILD); Masonwood Estate, OUTDOOR LIVING AREA (DESIGN/BUILD).

WHEAT'S LAWN & CUSTOM LANDSCAPE *wheats.com* — *The Tregoning Residence, OUTDOOR LIVING AREA (DESIGN/BUILD); The Allen Residence, OUTDOOR LIVING AREA (DESIGN/BUILD); Graham-Collier Residence, OUTDOOR LIVING AREA (DESIGN/BUILD).

DISTINCTION

FINE EARTH LANDSCAPE INC. *fineearth.com* — Bethesda Family Resort, OUTDOOR LIVING AREA; Rhee Residence, OUTDOOR LIVING AREA (DESIGN/BUILD).

GARDENWISE, INC. *gardenwiseinc.co* — Logan Circle Oasis, Washington, DC, OUTDOOR LIVING AREA (DESIGN/BUILD).

JOHN SHORB LANDSCAPING, INC. *jsli.com* — A Residence in Northwest DC, OUTDOOR LIVING AREA.

LIVE GREEN LANDSCAPE ASSOCIATES, LLC *livegreenlandscapes.com* — Bel Air Residence, OUTDOOR LIVING AREA (DESIGN/BUILD).

McHALE LANDSCAPE DESIGN, INC. *mchalelandscape.com* — Chicamauga Residence, CRAFTSMANSHIP.

HONORABLE MENTION

COLAO & PETER OUTDOOR ENVIRONMENTS *colaostone.com* — Modern, Alexandria, CRAFTSMANSHIP (DESIGN/BUILD).

GARDENWISE, INC. *gardenwiseinc.co* — Tudor Craftsman, Arlington, Virginia, TOTAL RESIDENTIAL CONTRACTING (DESIGN/BUILD).

LIVE GREEN LANDSCAPE ASSOCIATES, LLC *livegreenlandscapes.com* — Glen Arm Residence, TOTAL RESIDENTIAL CONTRACTING (DESIGN/BUILD).

McHALE LANDSCAPE DESIGN, INC. *mchalelandscape.com* — Southern Maryland Residence, RESIDENTIAL MAINTENANCE.

SISSON LANDSCAPES *sissonlandscapes.com* — Soutter Residence, OUTDOOR LIVING AREA (DESIGN/BUILD).



ZEN Associates, Inc.
the balance of art, science, and nature

Landscape Architects
Interior Designers
Design + Build

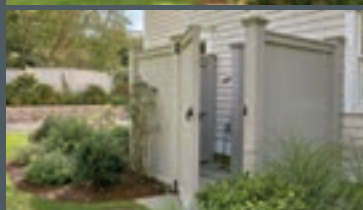
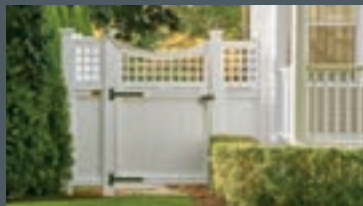


Boston | Washington DC
zenassociates.com | 800.834.6654



**Breathe new life
into your outdoor lifestyle.**

Transform your outdoor area with everything from outdoor kitchens and pergolas, to fence, gates, shower enclosures, and much more. Our structures are crafted in low maintenance **AZEK**, an advanced vinyl material that looks just like natural wood. To schedule a free design consultation, call **800-343-6948** or visit **walpoleoutdoors.com**



80 years
Walpole OutdoorsTM
9545 River Road, Potomac, MD • 301-983-6040

connect with us
for new ideas
and inspiration

WASHINGTON DC • MD • VA

HOME & DESIGN

The Magazine of Architecture and Fine Interiors



HomeAndDesign.com



Bob Narod, Photographer, LLC

www.narodphoto.com



JENNIFER GILMER KITCHEN AND BATH, LTD



12213 Sugar Creek Court • Herndon, VA 20170 • 703-404-9001



grace NOTES

A renovation updates a
1920s Tudor-style house in DC
while preserving its period charm

By JENNIFER BARGER
PHOTOGRAPHY BY EDWARD ADDEO





Visitors enter the stone manor house through a peaked doorway (opposite) that opens into a wide, welcoming foyer (these pages) furnished with antiques. The foyer overlooks a lush back garden through French doors and connects to the living room via archways.





The large living room easily accommodates several seating areas and a grand piano. Off-white walls allow plush antiques and bespoke pieces such as a David latesta coffee table and sofas from Nancy Corzine to take center stage. A coffered ceiling adds interest, while French doors admit plenty of natural light.

“There are lots of layers, and there’s a story behind everything.”

—SUSAN BEIMLER



Wide, arched double doors separate the entry hall from the elegant dining room, which showcases an antique dining table and chairs paired with wingback host chairs by Edward Ferrell + Lewis Mittman.



Ambassadors, presidents and Hollywood stars from Elizabeth Taylor to Vincent Price have all hobnobbed in this grand 1927 stone manor in DC's Massachusetts Heights. But thanks to a 2012 renovation by its latest owners, the vibe these days is more comfortable storybook castle than Hollywood lair.

The empty-nester husband-and-wife owners enlisted interior designer Susan Beimler and architect Ankie Barnes to help make the nearly 8,000-square-foot home feel both relaxed and refined. The challenge? Preserving its Jazz Age, neo-Tudor details—coffered ceilings, Gothic arched doorways and wood library paneling—while “lightening up and enhancing everything,” explains Beimler.

“I don’t want to live in a museum,” says the wife. “I need a place to host family and friends.” Beimler, Barnes and his team made this possible by smartening up the graceful structure. This gentle facelift involved remodeling the kitchen, rejiggering the capacious dining room and adding a dramatic tower to house a new second staircase. “We had a second staircase before,” laughs the wife, “but it was designed for billy goats.”

In his take on the new, three-story staircase, Barnes created a silo of stone and light. “We wanted it to be as bright as possible,” says the architect. “The top of it is like a traditional Italian belvedere, with windows wrapped around three sides. It’s not too heavy and it doesn’t compete with the rest of the house.”

The couple entertains often and hosts their grown children and grandchildren for frequent meals. So Barnes opened the kitchen up to the dining room via an arched door that mirrors a door on the opposite side of the dining space. Another arched opening was added to link the kitchen to the stone-walled, enclosed porch-turned-breakfast room. “The eating and food preparation areas weren’t well-incorporated,” says Barnes. “Now, the whole space has such generosity.”

In the dining room, an antique walnut table purchased in Georgetown seats eight to 14, plus there’s room for a children’s table too. “It makes for fun celebrations,” says the wife.

The kitchen—once primarily a staff workspace—morphed into a home cook’s dream via expanded windows, a nine-foot, marble-topped island and a six-burner Wolf gas stove. Cabinets

RENOVATION ARCHITECTURE: ANKIE BARNES, FAIA, LEED AP, principal; MELANIE GIORDANO, AIA, and STEFAN HURRAY, Associate AIA, project architects, Barnes Vanze Architects, Inc., Washington, DC. INTERIOR DESIGN: SUSAN BEIMLER, Susan Beimler Interior Design, Washington, DC. RENOVATION CONTRACTORS: Potomac Valley Builders, LLC, Bethesda, Maryland and Horizon HouseWorks, Bethesda, Maryland. LANDSCAPE DESIGN: Green Gardens, Inc.; Clarksburg, Maryland.



French doors open from the entry hall and living room out to the patio (this page). The dining room (opposite) also leads outside through a Tudor-style arched door.







The light-filled kitchen features clean-lined, traditional cabinetry, a Niermann Weeks chandelier and stools from Interior Concepts. Marble countertops and backsplash create a seamless look.





The breakfast room (above) is distinguished by heated slate floors and whitewashed granite walls. Designed by Green Gardens, Inc., with lush plantings and blooms, the back patio (opposite) offers space for al fresco dining as well as relaxation.

were painted Benjamin Moore's fog-like Galveston Gray and paired with veined Calacatta countertops for a serene vibe. "Both the husband and wife love to cook, and now they've got a space with light, pull-out cabinet shelves and great flow," says Beimler, who devised a clever storage hack: a jumbo blackboard near the stove that conceals a spice cabinet.

The granite walls both inside and outside the cozy breakfast room were whitewashed for a weathered-yet-warm feel. Finished with a heated slate floor and Beimler's French-meets-informal furniture choices, the space is where "we eat most of our meals," says the wife. "It's so charming."

Beimler and Barnes also recast other graceful rooms on the first floor such as the bright center hall, the wood-paneled library and the jumbo-sized living room with coffered ceilings. Much of the décor was inspired by the home's abundant natural light and lush gardens, which shimmer through the outsized windows and French doors. "At the back of the property in particular," remarks the wife, "it feels like a tree house."

In the living room, the ample sunlight is boosted by an eight-paneled gold mirror above the poured-concrete fireplace mantel. Barnes cleverly had the mirror constructed to conceal a big-screen TV.

Furnishings, many used in the couple's previous homes, lean toward what might be called "château chic." French antiques (twin 1700s cabinets and an iron Parisian gate refashioned by David Iatesta into a coffee table) and art sidle up to comfortable sofas and plush carpets in the living room. "There are lots of layers," says Beimler, "and there's a story behind everything. They have so many interests!"

The wife's love of gardening shows up indoors as well as out. Think cement balls cheekily placed under a Chippendale table in the front hall or an antique eagle weathervane keeping watch in the living room. It seems right at home yet regal—just like the fairytale house itself. ❖

Writer Jennifer Barger resides in Washington. Photographer Edward Addeo is based in New York.

SEE RESOURCES at homeanddesign.com.

SOUTHERN BELLE

Empty nesters settle into a new DC home enlivened with color and sophisticated charm

BY CHARLOTTE SAFAVI

PHOTOGRAPHY BY
STACY ZARIN GOLDBERG





In the family room, shades of turquoise range from the Galbraith & Paul rug to the Manuel Canovas armchair fabric. Bi-fold doors open to the lush landscape.



A Chippendale-style balustrade and shuttered front doors (below) grace the home's façade; Fine Earth Landscape designed the welcoming front garden. Bucking tradition, library paneling (above and opposite) is painted in Benjamin Moore's Mill Springs Blue in a high-gloss finish. The room mixes antiques, such as a mirror from Georgetown's Oliver Dunn, with a new sofa and wing chairs from Lee Industries.

Once their kids had flown the coop, Liz and Jim Underhill decided to sell their perch in Bethesda and start anew in DC's Foxhall neighborhood. "Our former home was very traditional," says Liz Underhill, who now shares a newly built, four-bedroom house with her husband, CEO of a commercial real estate firm. "We really enjoyed our old place, but over the years, our taste has changed. We wanted a cheerful-looking home with lighter and brighter colors. We're also drawn to Southern style."

Building and designing a house from scratch went smoothly for the couple, who started with an able team that included George Myers and Luke Olson of GTM Architects, Fine Earth Landscape and Sandy Spring Builders. As the project broke ground, the owners hired Bethesda interior designer Erica Burns to help them select everything from cabinetry design, trim and millwork to paint colors and floor stains, while also creating an overall decorating plan.

Special details set the colonial-style house with a whitewashed red-brick exterior apart from its neighbors. "They wanted a

.....
 ARCHITECTURE: GEORGE T. MYERS, AIA, principal; LUKE OLSON, project manager, GTM Architects, Bethesda, Maryland. INTERIOR DESIGN: ERICA BURNS, Erica Burns Interiors, Bethesda, Maryland. LANDSCAPE DESIGN: Fine Earth Landscape, Poolesville, Maryland. BUILDER: Sandy Spring Builders, Bethesda, Maryland.







A chair in blush-colored Schumacher velvet adds contrast in the library, which opens to the foyer (above), papered in trellis grass cloth by Cowtan & Tout. In the dining room beyond (opposite), Erica Burns stained the owners' reddish wooden table a chic ebony and paired it with chairs upholstered in pale blue fabric by Jane Churchill.







Turquoise backsplash tile by Tabarka Studio adds a burst of color in the crisp, white kitchen created in collaboration with kitchen designer Amy Collins. David Francis bar chairs pull up to the raised counter.

“Turquoise is a tricky color. It has to be the right shade and used in the right way.” —ERICA BURNS



A John Rosselli lantern in a verdigris finish hangs above a Custom Furniture L.A. table in the breakfast nook (above, left); the dining chairs are covered in chartreuse fabric by Colefax & Fowler. An adjacent bar with a beverage cooler and storage (above, right) is party-ready. The kitchen's Roman shade (opposite) is fashioned from Galbraith & Paul fabric.

Southern plantation feel,” says GTM project manager Luke Olson. “So in lieu of a standard front-porch roof, we designed a decorative Chippendale-style balustrade. We also paired up the porch columns to allow for a more open feel, as well as a through-view to the shuttered French doors.”

Inside, arched case openings instead of square ones lead from the foyer into the dining room and library, which can be sealed off by way of a glass-paned pocket door. “The homeowners requested a cozy library at the front of the house—not a formal living room—so we paneled the entire space and finished it off in a high-gloss lacquer,” says Burns.

Unlike the typical wood tones found in most libraries, this one is paneled in turquoise. In fact, shades of turquoise drove the color palette for the entire home, along with complementary hues of blush and chartreuse, set against a neutral white backdrop. “Turquoise is a tricky color,” Burns attests. “It has to be the right shade

and used in the right way. While turquoise is a common thread in the main living spaces, it’s expressed in different mediums and doses.” For example, the library’s glossy, saturated turquoise softens as it travels via a matte turquoise-and-cream wallpaper in the foyer to the dining room, where chairs are upholstered in linen of the same powdery-pale turquoise hue.

“The front spaces—foyer, library and dining room—play off each other, so all three had to work together,” explains Burns.

This is true not only of the color palette, but also of the furnishings. Burns blended new and existing pieces throughout the home, giving some of the older furniture—mostly antiques—a renewed finish or purpose. “The old dining table previously had red tones, so we stained it a chic, dark ebony and paired it with freshly upholstered dining chairs,” says the designer. “In the foyer, I repurposed an antique French chest as a table, but added a sense of whimsy to it with a sculpted-leaf table lamp in gold.” The brass-





A paneled staircase (above) leads to the second floor. Gretchen Everett fabricated the shades in the master bedroom (right), as well as the window treatments throughout the home. The dressing room (below) houses a faux-fur bench and a glamorous light fixture by Visual Comfort. The master bath (opposite) boasts tile from Architectural Ceramics and sconces from Ro Sham Beaux.





and-gold accents in the more formal front rooms are also a nod to Old World—and Southern—aesthetics, but like the airy, newly sourced light fixtures, they have an updated vibe.

Though the overhead lighting and kitchen hardware turn to a dark, oil-rubbed bronze in the more casual back of the house, turquoise brightens up the kitchen's hand-painted backsplash tiles. Other kitchen features include an extended marble-topped island, part of which is raised to function as a built-in breakfast bar/table paired with tall Chippendale-backed chairs. Countertops are white marble and, as in the rest of the house, flooring is bleached white oak. On one side, a bar is ready for entertaining.

The open-plan kitchen connects to an eat-in dining nook and a family room, where a coffered ceiling lends definition. Neutral furnishings in these adjacent spaces are enlivened with accents of turquoise and chartreuse.

The family room celebrates the property's gardens. "Bi-fold patio doors allow you to open up the wall between the family room and back terrace, extending the space outdoors for entertaining," says Luke Olson.

Though chartreuse is picked up in the upstairs master bedroom in a mohair-velvet bolster, turquoise hues are ever-present in accents, as are gold and glossy wood finishes. For example, the white-lacquered nightstands have shiny gold keyholes and custom turquoise tassels. One of the smaller bedrooms was repurposed as Liz's dressing room, which picks up blush hues in a lacquered island with a marble top.

"The master bathroom has a pretty quatrefoil border and café curtains, letting in light while maintaining privacy," says Burns of the marble-clad space.

Now that the home is complete, the designer reflects, "It was a great process to be involved in this project from the ground up, as we were able to do a lot of things to make the home cohesive."

Liz Underhill agrees, "It's fun and fresh, while classic and timeless. Erica was able to translate our wishes into design." ❖

Charlotte Safavi is a writer in Alexandria. Photographer Stacy Zarin Goldberg is based in Olney, Maryland.

SEE RESOURCES at homeanddesign.com.

Almost HEAVEN



Wiedemann Architects designs
a modern, glass-walled cabin
in West Virginia to take in
stunning river views

BY JULIE SANDERS

PHOTOGRAPHY BY ANICE HOACHLANDER





About two miles past the Maryland border into West Virginia, the Potomac River bends in a soft L, fringed on one side by a jagged limestone cliff rising up 90 feet. At the top, a dense forest is strewn with massive boulders that conjure an almost prehistoric sensibility. This remote spot might seem an odd location for a house—until you glimpse the remarkable views of the river disappearing into the horizon in both directions. That’s what captivated sculptor Loraine Strait during her search for a parcel of land to buy. “I wanted to live in the forest and be by the water,” she says. “When I saw this land, it fit the picture I had in my mind.”

Strait had just moved back to the U.S. after 25 years in Paris. She quickly purchased four riverfront acres, which housed an abandoned limestone quarry that had been gouged into the cliff side. Until about 60 years ago, a cable car had transported limestone over the Potomac to the nearby C&O Canal, where it was loaded onto barges and sent downriver to be pulverized for concrete.

By the time Strait arrived, all that remained from that slice of history was limestone—and plenty of it. She and architect Greg Wiedemann, whose firm she hired to design a combination home/studio on the site, fought their way through the woods to the edge of the cliff where haphazard rock formations left behind by the quarry made walking difficult. “I had trepidation bringing Greg

ARCHITECTURE & INTERIOR DESIGN: GREGORY WIEDEMANN, AIA, principal; BARBARA SWEENEY, AIA, project architect, Wiedemann Architects, LLC, Washington, DC. CONTRACTOR: CARL PETTY, Carl Petty Associates, Ltd., Washington, DC.



Previous spread: Two concrete volumes support the home's second level, clad in expanses of glass and panels of ipe for privacy. The house (opposite) perches at the edge of a 90-foot cliff. The open-plan living space (above) places dramatic treetop views center stage.

INSPIRATIONS

Ideas from our H&D DESIGN PARTNERS.
See more at HomeAndDesign.com

DINING ROOMS



Paola McDonald, Olamar Interiors, LLC
olamarinteriors.com, [@olamar_interiors](https://www.facebook.com/olamarinteriors), [facebook.com/olamarinteriors](https://www.facebook.com/olamarinteriors)



Denise Perkins, Bountiful Interiors
bountifuldecor.com, 410-763-8500, [facebook.com/bountifuldecor](https://www.facebook.com/bountifuldecor)



Barbara Hawthorn, Barbara Hawthorn Interiors
BarbaraHawthornInteriors.com, 703-241-5588



Charlene Kennerknecht, Monarch Design
Monarchdesigndc.com, [@monarchdesigndc](https://www.facebook.com/monarchdesigndc)





A red-painted pocket door closes off the passageway between the kitchen (right) and the master bedroom (top). A bright-yellow sliding barn door separates the guest bedroom from the kitchen area (above). A view from the back balcony (opposite) reveals the master bedroom wing, which cantilevers over the rocky terrain.



“A series of concrete piers supports the foundation wall,” Petty says. Each pier rests on concrete that was poured over the bedrock to level it.

Strait’s sculptures in clay and metal informed the choice of materials for the home. The structure is framed in steel and clad in glass punctuated by panels of ipe. Balconies in front and back are made of steel and ipe, while inside, the radiant-heated floors are polished, black-tinted concrete—reminiscent of Strait’s cast-resin sculptures, many of which have a bronze patina.

Visitors enter the 2,200-square-foot house through one concrete volume on the lower level and climb the steel-and-ipe staircase to the second floor, encompassing an open-plan living room/dining area/kitchen, plus a master suite, guest room with en suite bath, powder room and studio. Sliding barn doors conceal closets and laundry. The garage, housed in the second concrete volume, is connected via an outdoor path between volumes. It accommodates a car as well as Strait’s metalworks studio.

Though she brought furniture with her from Paris, where she maintains an apartment, Strait ultimately replaced much of it with clean-lined, modern pieces that reflect the style of the house. Her kitchen is streamlined, with IKEA cabinetry, BoConcept bar stools, quartz countertops and a glass-tile backsplash. Blocks of Mondrian-like color throughout the house add warmth.


Strait is very happy with her home in the forest. “Lorie wanted the structure to be second to the place,” Wiedemann says. “We tried to embrace the natural beauty of the site while having a minimal impact on the land.” ❖

Anice Hoachlander is a principal at Hoachlander Davis Photography.

SEE RESOURCES at homeanddesign.com.



Seen from the rear, the house is walled by panels of glass from Kolbe's VistaLuxe collection that measure as much as eight feet by almost nine feet tall. The rocky terrain slopes down toward the cliff.




“It was very important to all of us
that we maintain the character of the site.”

—GREGORY WIEDEMANN, AIA



PERFECT BAL



Furnished with a custom iron-and-stone console and a blue bench, the foyer (opposite) leads to the family room (these pages), where a Jacobsen Egg Chair reflects owner Sigrid Smitt Goldman's Danish heritage.

ANCE

Susan Gulick marries style and durability in the new Great Falls home of a couple with five kids

By SHARON JAFFE DAN | PHOTOGRAPHY BY JUDY DAVIS

When Sigrid and Joshua Smitt Goldman first visited the five-acre Great Falls lot where they would build their future home, they found their Shangri La. Dotted with large, wooded properties, the neighborhood felt worlds away from the 15th-floor Reston apartment the couple shared with their five kids. “We loved how the street has almost a rural feel to it although you’re minutes away from Great Falls Village,” Sigrid recalls. “We stood there one evening and all we heard was crickets.”

After visiting a Gulick Group model home nearby, the couple had discovered this property listed on the builder’s website. They acquired the land and enlisted the company to build a farmhouse-style home there. Customizing an existing design, the plan added a wide front porch, yellow siding and stone details that not only blend in with the home’s bucolic surroundings but also pay homage to Joshua’s rural Alabama roots.

Avid racecar drivers and collectors, Sigrid and Joshua also commissioned a freestanding, nine-car garage connected to the main house via a breezeway. And they requested a veritable playground behind the home with a covered lanai as well as a pool, spa, fire pit and outdoor kitchen.

At the builder’s recommendation, the couple called designer Susan Gulick of Susan Gulick Interiors for help. (Though the companies share the same name, they’re separate entities). While construction was underway, the designer began to finish and furnish the interiors. “Coming from an apartment and moving into a large home, I knew a lot of furniture had to happen,” Sigrid relates. “We had some ideas but not the bandwidth or skill set to do it right.”

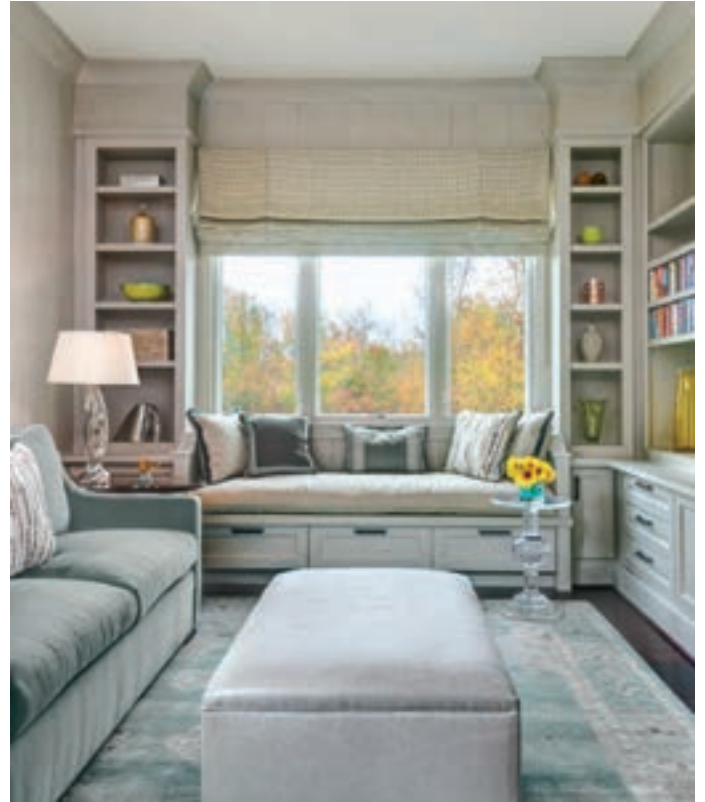
Susan Gulick focused on furnishings that would withstand the rigors of the couple’s kids, aged five to 16, and their two large Newfoundland dogs. “They wanted it be functional in the broadest of terms,” she recalls. “Not just a couple of rooms, but every room.”

In her plans, the designer married rustic farmhouse elements with a modern edge, noting that Sigrid hails from Denmark and gravitates to the simple, pared-down forms of a Scandinavian aesthetic. “We mixed in modern elements, but in warmer way,” she explains.

Myriad adjustments to the floor plan were made to suit the family’s lifestyle. For example, Gulick repurposed the living room into a home office for Sigrid and Josh, who own 3DISC, a global medical-imaging equipment company based in Sterling. “We didn’t want the space to be too industrial since it’s where you walk into the home,” says Sigrid. “Susan found a furniture-maker to build us beautiful rosewood desks.”

.....
INTERIOR DESIGN: SUSAN GULICK, ASID, Susan Gulick Interiors, Great Falls, Virginia. BUILDER: Gulick Group, Reston, Virginia. LANDSCAPING: GreenWorks, Chantilly, Virginia.





A custom light fixture, a live-edge table and a banded Chilewich rug define the breakfast area (left). The library/guest room (top), with its soothing celadon palette and custom window seat, invites repose. The formal dining room (above) boasts Crystorama pendants and chair backs upholstered in Maharam fabric.



Gulick also wove in Scandinavian design, from fabric by a Danish designer for Maharam on the dining-room chairs to the sculptural Egg Chair in the family room. This iconic Jacobsen piece is upholstered in blue—a favorite color of the owners that visually connects spaces throughout the home.

Celadon sets a tranquil mood in the library, where Gulick designed custom cabinetry finished by decorative painter Roberta Marovelli. “Sigrid wanted the library to be soft and kind of spa-like,” Gulick notes. Complete with a sleep sofa and access to a powder room converted into a full bath, the space doubles as a ground-floor guestroom.

In the breakfast area, the designer dressed up a woven-vinyl Chilewich rug with faux-leather banding and nailhead trim. “We made it look custom but you can just wipe it off,” she says of the practical yet stylish solution.

“Susan struck the perfect balance between a very rustic, raw-edge wooden table, an iron light fixture and a metallic rug,” adds Sigrid, describing the space. “It’s an incredible use of texture and different feels that work together.”

“We mixed in modern elements,
but in a warmer way.”

—SUSAN GULICK



Off the kitchen, a lanai (opposite, top) makes a cozy perch overlooking the outdoor kitchen, pool and spa (opposite, bottom). On the lower level (pictured here), Susan Gulick designed the fireplace wall, which combines walnut panels and metallic porcelain tiles. Custom barn doors open to a media room.



The master bedroom (right) envelops the owners in calm, neutral colors and a blend of textures. The master bath (above) features an oversized steam shower and soaking tub.

Unique, industrial finishes also come into play on the lower level. Gulick designed a fireplace wall combining walnut paneling and porcelain tiles in a metallic finish. She employed panels of metallic Pollack fabric on custom barn doors that conceal a media room. The bottom floor also features a gym, a bar area with a pool table and arcade games, and a changing room with access to the backyard.

The second floor houses five bedrooms for the kids, a lounge area for homework and the master suite. Frequent travelers, the owners wanted their sanctuary to echo the look of a high-end African lodge. Campaign-style furniture and leather and fur accents convey a subtle safari theme.

Finally settled into their tailor-made home, the family couldn't be happier, whether they're entertaining outdoors or settling in for movie night downstairs. Sigrid especially loves the lanai off the kitchen. "My favorite thing to do is come home from work and have a drink out there," she says. "I watch deer meander around and feel like I'm on vacation." ❖

Judy Davis is a principal at Hoachlander Davis Photography in DC.

SEE RESOURCES at homeanddesign.com.





Join HOME & DESIGN Magazine and IFDA for our
4th Annual Masquerade Ball
benefiting The Educational Foundation
Saturday, February 25, 2017 7pm - 11pm



Capitale
1301 K Street Northwest #103, Washington, DC

Prepaid bar for first hour
Free Valet Parking
Food by world renowned, award winning chef,
Paul Kennedy, Owner of PK's Kitchen
Dancing - Top 40s DJ
Silent Auction with fantastic items
Huge 50/50 Raffle

To purchase tickets to this event: www.ifdadc.com
For information on how to get your business name in front of this gathering via event sponsorship or silent
auction donations, please contact masqueball@ifdadc.com

INSIGHTS

Ideas from our H&D DESIGN PARTNERS.
See more at HomeAndDesign.com



Leading Edge

Decorative trim to dress up drapes



Veneto Bead Fringe and Marcel Tie Back. romo.com



Éplinglé Velvet borders. samuelandsons.com



Labyrinth Tape in Platinum. fschumacher.com

Designers explain how to select fashion-forward, unfussy styles

Drapes should add softness and warmth to your space, so avoid bold prints and heavy embellishments. Instead, consider the use of monochromatic fabrics or simple geometrics.

—**JULIE HOFFMANN & LORI DUVAL**, J & L Interiors



Quality window treatments are costly, so keep it classic to stand the test of time. For a bit of pattern or pizzazz, add a band trim to the lead edges. —**PAULA**

GRACE HALEWSKI, Allied ASID, Paula Grace Designs

Clean and simple panels are the hottest style now. Select fabric with a soft hand so it drapes. I use a simple iron or acrylic rod and create tucks rather than pleats.

—**SUSAN GULICK, ASID**, Susan Gulick Interiors



Sandalspice woven shade. conradshades.com

Simple Roman shades are my favorite window element; they can be dressed up with decorative trim/tassels.

—**RACHEL JAMES**, Rachel James Interiors

Stationary panels should cover the leading edge of the window and extend over the wall a bit. A valance will make the room feel taller. This is a great, tailored look that doesn't block daylight.

—**GINA FITZSIMMONS, ASID**,
Fitzsimmons Design Associates, Inc.

Avoid heavy swags, cascades and jabots. Simple pinch-pleated draperies—with only two pleats instead of three—create a modern look. —**BARBARA HAWTHORN**,

Barbara Hawthorn Interiors



Brass rods and rings are back and make a striking contrast to newly simplified window treatments.

—**JAMIE MERIDA**, Bountiful Interiors

INSPIRATIONS

Ideas from our H&D DESIGN PARTNERS.
See more at HomeAndDesign.com

BEDROOMS



Rachel James, Rachel James Interiors
rjinteriors.com, 571-286-0856, facebook.com/racheljamesinteriors



Laura Fox, Laura Fox Interior Design, LLC
laurafoxinteriordesign.com, @laurafoxinteriordesign



Paula Grace, Paula Grace Designs, Inc.
paulagracedesigns.com, @paula_grace, facebook.com/paulagracedesigns



J&L Interiors, LLC
jandlinteriors.net, 703-737-7660, facebook.com/jandlinteriors



Denise Perkins, Bountiful Interiors
bountifuldecor.com, 410-763-8500, facebook.com/bountifuldecor



Barbara Hawthorn, Barbara Hawthorn Interiors
BarbaraHawthornInteriors.com, 703-241-5588



Gina Fitzsimmons, Fitzsimmons Design Associates
Fitzsimmonsdesign.com, 410-269-1965, facebook.com/fitzsimmonsdesign



Melissa Broffman, Melissa Broffman Interior Design
MelissaBroffmanInteriors.com, 703-536-5409

INSPIRATIONS

Ideas from our H&D DESIGN PARTNERS.
See more at HomeAndDesign.com

BEDROOMS



Kirsten Kaplan, Haus Interior Design
hausinteriordesign.com, 301-785-8065, [instagram.com/hausintdesign](https://www.instagram.com/hausintdesign)



Kori Keyser, ASID, Keyser Interiors, Inc.
KeyserInteriors.com, #KeyserInteriors



Paola McDonald, Olamar Interiors, LLC
olamarinteriors.com, @olamar_interiors, [facebook.com/olamarinterior](https://www.facebook.com/olamarinterior)



Susan Gulick, Susan Gulick Interiors Ltd
susangulickinteriors.com, info@susangulickinteriors.com



Charlene Kennerknecht, Monarch Design
Monarchdesigndc.com, @monarchdesigndc



Arlene Critzos, Interior Concepts, Inc.
InteriorConceptsInc.com, 410-224-7366



Victoria Sanchez, Victoria at Home
victoriaathome.com, 703-836-1960, instagram.com/victoriaathomedesign



Skip Sroka, Sroka Design Inc.
srokadesign.com, 202-734-3920, instagram.com/srokadesign

Product WATCH

H&D curates the latest
finds in furniture, flooring
and lighting

BY JULIE SANDERS



Designed by Luca Nichetto for Cassina, the 380 La Mise sofa beckons with comfortable polyurethane foam and feather padding covered in removable fabric with distinctive zigzag stitching. Nichetto's rectangular (pictured), square, triangular and round Torei tables are topped by Carrara marble or red-stained ash. All available in DC through Poltrona Frau. poltronafrau.com; cassina.com



Philippe Nigro took inspiration from the rugged cliffs of Manarola, an Italian fishing village, in the design of his eponymously named seating collection for Ligne Roset. A polyurethane foam seat and back, complete with lumbar support and headrest, sit atop solid wood legs (pictured) or a circular steel base. Available at Ligne Roset in DC as an armchair, loveseat, sofa or ottoman. ligne-roset.com

FURNITURE



Bassett Mirror Company's occasional tables come in a range of shapes; materials that include glass, metal and wood; and finishes such as gold-leaf, platinum and rust. Top row: Camilla and Serena accent tables, Kellie Scatter Table. Middle row: Krier and Clover Scatter Tables. Bottom row: Christie Side Table, Calder and Bristol Scatter Tables. bassettmirror.com

Handcrafted draperies

SLIPCOVERS, REUPHOLSTERY, WINDOW TREATMENTS
CUSTOM MADE IN OUR WORKROOM



ROCKVILLE INTERIORS

CALL US TODAY • SHOP AT HOME OR VISIT OUR SHOWROOM
EXQUISITE FABRICS • TRIMS • WALLPAPERS ON DISPLAY

REUPHOLSTERY

OFFER EXPIRES APRIL 30, 2017

20% OFF

FABRIC ONLY

SLIPCOVERS

OFFER EXPIRES APRIL 30, 2017

SOFA \$199
Up to 3 seat cushions *

CHAIR \$149
Up to 1 seat cushion *

We pick up your furniture, cut and pin-fit slipcovers, install the slipcovers and return to your home.

*Fabric is additional and must be purchased from Rockville Interiors.

DRAPERIES

OFFER EXPIRES APRIL 30, 2017

20% OFF

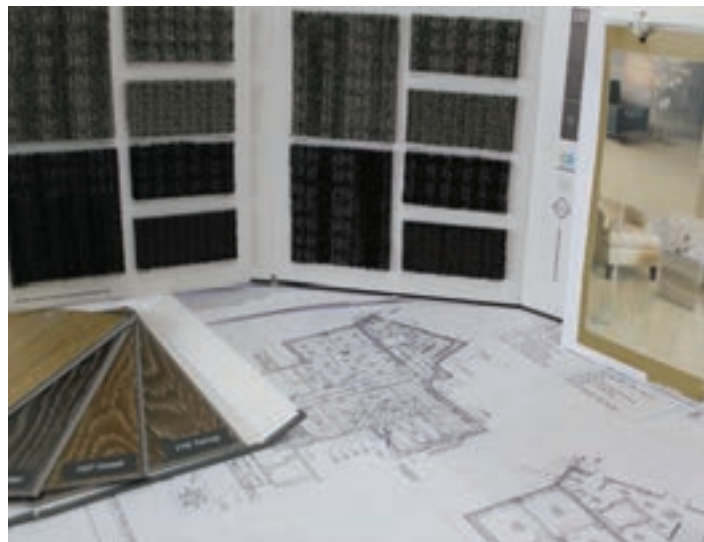
FABRIC ONLY

5414 Randolph Road Rockville 301-424-1900 RockvilleInteriors.com

**B&F
Ceramics
Design
Showroom**
www.bfceramics.com



enrich your home



beautifully crafted carpets and rugs that reflect your *style*.



Great Selection All Under One Roof

Karpet King design center • 11700 parklawn drive • rockville, maryland • 301.770.4110 • karpetkingdc.com

Lorena Canals' machine-washable rugs are made by hand in India using natural cotton and non-toxic dyes. Pictured here, the Azteca Natural rug in Vintage Blue comes in a range of sizes; a complementary collection of throws, cushions and baskets is also available. A portion of the proceeds from Lorena Canals finances schooling for more than 100 children in northern India. lorenacanal.us



FLOORING

▼ The Lattice rug collection was designed by Ronan and Erwan Bouroullec for Nanimarquina. Handmade in Pakistan in a kilim-style flatweave, the rugs are created using handspun Afghan wool and come in four sizes and two color variations. Pictured here in a beige, turquoise and charcoal-gray colorway. nanimarquina.com



Armstrong's Vivero vinyl floor-tile collection with Diamond 10 Technology incorporates diamond particles for extra durability. The waterproof surface is available in traditional wood (pictured in Dark Chocolate finish) or natural stone looks. It withstands dents, scratches, scuffs and stains and is easy to install. armstrong.com/flooring

Capel, which got its start making braided rugs, is marking its 100th anniversary with two commemorative braided-rug collections. New Homestead (pictured) is an updated version of the company's oldest braided design, constructed out of polyester, polypropylene and cotton, while Yorktowne refreshes one of its best-selling wool blends. capelrugs.com



Leave a Lasting
Impression

VISIT HMWLIGHTING.COM

BAZAAR



A complex jacquard construction paired with bi-color vinyl yarns distinguishes the new Mosaic and Wave collections by Chilewich; the Wave floor covering is pictured here. Both patterns are also available as placemats and table runners.
chilewich.com



electronic home environments
enhancing your lifestyle with technology

888-323-8671 | ehvironments.com

Whole House Audio • Media/Theater Room • Lighting Control
Shade Solutions • Network Infrastructure • Security

Robert Merhaut Photography; Molitor Construction-BUILDER



Inspired by colors found in California shorelines and sunsets, Architectural Systems' Malibu Hardwoods flooring collection comes in four hues ranging from grayish driftwood to dark brown. The engineered-oak planks are made from sustainable hardwoods that have been wire-brushed and prefinished with hard-wax oil. archsystems.com

MARBLE SYSTEMS®

NATURAL STONE | DECORATIVE | ENCAUSTIC CEMENT
GLASS | PORCELAIN | TERRACOTTA | CERAMIC



Transform your outdoors.



Product Featured: Cotto Med Terracotta Collection

FAIRFAX SHOWROOM & SLAB YARD:

2737 DORR AVENUE, FAIRFAX, VA 22031 P:703.204.1818

BETHESDA SHOWROOM:

6931 ARLINGTON RD SUITE C2, BETHESDA, MD 20814 P:301.913.9113

CHANTILLY OUTLET CENTER:

25383 PLEASANT VALLEY RD, CHANTILLY, VA 20152 P: 703.337.1500

www.marblesystems.com

BAZAAR

► Hudson Valley Lighting pays homage to early electric fixtures with Colebrook, a pendant that houses a long, exposed-filament bulb within an open cage. An adjustable cord is covered in black, braided cloth. Available in Aged Brass, Old Bronze or Polished Nickel through Dulles Electric in Sterling, Virginia. dulleselectric.com; hudsonvalleylighting.com



LIGHTING

▼ Designed by Philippe Starck for FLOS, Bon Jour Unplugged is the diminutive, 10.6-inch-tall, battery-powered sibling of the Bon Jour Table Lamp. A transparent or aluminum-painted base comes with a smooth or wavy acrylic shade in transparent, yellow, amber or gray. A micro-USB connector recharges the light in 30 minutes for a lighting life of six hours. Available through Apartment Zero. apartmentzero.com; usa.flos.com



Troy RLM Lighting's dual-shade Aero pendant is part of its Modern Visions collection. The industrial-style LED fixture combines glossy white with one of 20 bold or neutral finishes (tangerine is pictured here) and a white cord. Also available as a wall sconce through Annapolis Lighting. annapolislighting.com; troyclm.com





The Suspenders LED system from Sonneman combines interconnected metal bars and suspended LED components in a range of formations. The modular chandeliers, first designed by Robert Sonneman in the 1980s in spare, modern style, are now even lighter in scale. Pictured here, the 48-Inch 2-Tier Linear 5 Light chandelier with a teardrop luminaire. sonnemanawayoflight.com



Arteriors' Duane Sconce is anchored by a steel back plate with a vertical spear finished in antique brass. Metal discs with an oil-rubbed bronze finish encircle frosted-glass diffusers. Available through Dominion Electric Supply Co. area locations. dominionelectric.com; arteriorshome.com



The Grace Pendant by Studio Italia Design generates a soft glow through the laser-cut pattern in its metal shade, which is covered in a fabric-like resin material that acts as a diffuser. Designed by Andrea Tosetto, the suspension light requires incandescent bulbs; it's also available as a flush-mount fixture or sconce. studioitaliadesign.com ❖

ALL YOU NEED IS LIGHT

*Illuminate your home with exquisite lighting from
Dominion Electric Supply*



CORBETT
LIGHTING

*Ambrosia Collection – 11 light pendant
with clear crystal accents. Gold and
silver finish with stainless steel
hand crafted iron.*



DOMINION
ELECTRIC SUPPLY COMPANY, INC.

Lighting Showrooms

Arlington | **Chantilly** | **Laurel**
703-536-4400 | 703-631-8300 | 301-470-2121
www.DominionElectric.com



(*Items shown may not be currently in-stock or on display. Please call for availability.)

THE CEREMONY BEGINS



AAI Poggenpohl Inc.
6809 Wisconsin Ave.
Chevy Chase MD 20815
Phone: 301-657-8616
ahfarazad@aai-poggenpohl.com
www.chevychase.poggenpohl.com



Poggenpohl Georgetown
3327 M Street NW
Washington DC 20007
Phone: 202-342-9111
info@washingtondc.poggenpohl.com
www.washingtondc.poggenpohl.com

**poggen
pohl**

GTM
ARCHITECTS



7735 OLD GEORGETOWN ROAD, SUITE 700 BETHESDA, MARYLAND
WWW.GTMARCHITECTS.COM
240.333.2000

*Setting the trend in
designer glass*



Bel Pre Glassworks, Inc.
301-948-6003 | www.BelPreGlass.com



© SOPHIE PYLE

creative DYNAMO

Co-founder of DC's Swatchroom, artist Maggie O'Neill emblazons area homes and businesses with imagination—and soul

BY TINA COPLAN

Taking a break from her busy schedule, Maggie O'Neill sits behind the desk in her second-floor studio overlooking DC's fast-changing Shaw neighborhood. Along the walls, paintings and prints from her celebrated Washington monuments series lend a cheerful sense of place. The Lincoln Memorial—in buoyant colors and bold strokes—is dusted with falling snow. Against a blazing backdrop, Uncle Sam's iconic recruiting image is rebooted with the words "Love Trumps Hate." Three commissioned works depicting Union Station's grand concourse wait to be finished.

O'Neill hopes to find more time to paint. It has become a small part of her dynamic career path in art. Since starting out 15 years ago painting murals and decorative finishes for luxury homes, her business has boomed. The company that began as O'Neill Studios has evolved into Swatchroom (swatchroom.com), a complete-service firm that creates all aspects of interior and occasionally outdoor installations, from art to furniture and lighting.

"People ask whether I consider myself a designer or an artist first," O'Neill begins. "I always say artist. The design side was born out of wanting to make art constantly."

Her imaginative energy has transformed 22 restaurants and nightclubs around town into singular environments, from the ornate interiors of Capitale nightclub to the clean, international style and indigenous woven textures of Sakerum, a new Asian-Latin fusion restaurant. "Our goal is to create a 360-degree experience," says O'Neill. The company has also designed a handful of residences and hundreds of smaller projects. "What we do best," she adds, "is help develop a concept from start to finish."

That happened when O'Neill walked into one of her first restaurant-design presentations seven years ago. "I carried in a painting of Lincoln and a pile of pennies," she remembers. That audacious moment led to the stellar, stately Lincoln Restaurant, which reflects an inventive aesthetic based on the explosive colors and everyday materials of pop art. A million pennies covered the floors and still panel one wall; its glossy red doors



O'Neill (opposite) based a restaurant-design concept around her pop art-style painting of Lincoln (below, left). Swatchroom designed DC's Sakerum (below, right) using woven textiles, wood and white concrete; and in Twitter's DC office, created a "Hashtag Flag" (left) made of laser-cut styrene feathers (inset).

were powder-coated at an auto shop. "Who would have thought back then that artists, rather than designers, would be the inspiration for a site installation?" O'Neill asks.

She discovered a smooth transition from painting to creating three-dimensional designs. "Playing with other materials besides paint became totally natural for me," she says. Following the large Lincoln paintings she made for the restaurant installation, her splashy portraits of Theodore Roosevelt added to the exuberant mix at the restaurant Teddy & The Bully Bar two years later. Seventeen other local artists also produced spirited takes on aspects of Roosevelt's life. Displayed around the dining room, six wooden animal heads stand in for less savory taxidermic trophies, representing Roosevelt's passion for hunting. Cheeky post-Victorian photographs adorn the restroom walls. And a ceiling light James Kerns of Corehaus repurposed from a 30-foot-long plumbing pipe visually divides the bar from the dining room. The rough fixture diffuses a "steam-punk look," as O'Neill calls it. All parts of the design corral historic and



contemporary styles around the presidential theme.

Today, Swatchroom draws on a database of some 50 regional artists and craftspeople. Handwork, O'Neill has found, "imbues a space with soul, an intangible experience that machine-made goods can't match." Salvaged or ordinary materials used in uncommon ways add another di-



mension. At Twitter's DC office, Swatchroom formed a "Hashtag Flag" installation out of 7,000 laser-cut feathers. For a bachelor's all-new condo, wooden lanes from an out-of-commission bowling alley were bleached and reclaimed as a kitchen island. "I geek out over materials," the artist says. "If I found mattress springs, I'd wonder how I could use them."

STUDIO

O'Neill's enterprising career is grounded on a classical foundation. She earned a master's degree in fine art at the University of Georgia's program in Cortona, Italy, where she worked with construction crews restoring frescoes.

"There was such respect for work made by hand," the artist says about life abroad as an artist and craftsperson. "Restoration was revered for the academic acumen required, the knowledge of chemistry and the ability to execute what you were thinking. That motivated me a lot when I moved home."

Born and raised in Silver Spring, Maryland, O'Neill returned to the area and began to paint portraits, baby furniture, murals—"whatever it took," she recalls, to make a living as an artist. Meeting people in their homes led to requests for work on different projects; she learned to make lighting fixtures and lay tile. "My portfolio of services and abilities grew, and what I wanted to make kept growing until taking over an entire space became an option."

Four years ago, O'Neill co-founded Swatchroom with architect Warren Weixler. The company has expanded to 14 full-time employees including architects and designers with backgrounds in interiors, graphics, carpentry, sculpture, digital fabrication and branding.

Now 39, O'Neill is eager to pass on her hard-won knowledge to others. "If anybody has to be a starving artist, it's unnecessary," says the entrepreneur, who with her brilliant blue eyes, flowing blonde hair and direct manner projects self-assurance.

To help women artists, O'Neill has organized SuperFierce, a traveling exhibit introduced last fall at the National Museum of Women in the Arts. It brought together high-earning women artists in a program about support, mentoring and giving back. O'Neill donates a portion of sales from her limited-edition prints to local charities.

She is grateful for the mentoring she received from chef Jamie Leeds, owner of Hank's Oyster Bar. One of her few female commercial clients, Leeds sets an example of success in a mostly male field. An upcoming Hank's location at The Wharf on Maine Avenue is among seven projects now underway at Swatchroom. The firm also anticipates adding international projects in the coming year.



O'Neill paints *Roller Skates (Spirit Animal)* in acrylic on canvas (left). In a CityCenterDC condo that Swatchroom designed, *Chaplin* (below, left), a limited-edition print by O'Neill, hangs in the living room. Swatchroom also created custom lighting and a 25-foot-long steel plinth with a fireplace in the space (below, right).



BOTTOM PHOTOS © DOMINIQUE FIERRO

"What we do best is help develop a concept from start to finish." —MAGGIE O'NEILL

Still, O'Neill is determined to set aside more time for painting. Stepping over to her worktable, she pulls dried acrylic paint from a palette and holds the colored shape up against her rendering of a Gibson Girl—a beloved image from the turn of the last century. The commissioned head is embellished with gold-leaf tresses. Pursuing her own muse, O'Neill has started to create variations on a Gibson Girl theme. She intends to use the congealed colors as three-dimensional waves of hair in the new works, which will also be painted against a background of recycled bingo cards gathered by the artist at a Knights of Columbus hall in DC. She is thinking about other collage possibilities, too.

In the gallery downstairs, portraits of two

contemporary women, Hillary Clinton and Michelle Obama, are the latest in O'Neill's "Social Currency" series. Their likenesses are painted over enlarged photos of \$100 bills. O'Neill hopes to complete this personal series (which she considers politically charged) with illustrations of other iconic women overlaid on scans of beautifully ornamented international currencies.

The artist has excluded her own paintings from Swatchroom's recent installations, preferring to promote artwork by others. At the moment, however, she takes a different tack, thinking out loud and smiling, "Maybe I'll push for a new project about Hillary." ❖

Writer Tima Coplan is based in Chevy Chase.



Stunning Traditional, Craftsman, Arts & Crafts, French Country, and Shingle Elevations

CARRINGTON HOMES IN FAIRFAX COUNTY

Exquisite Custom Homes Built On Your Lot in Vienna, Oakton, Clifton, McLean, and Great Falls

* New model coming soon to the Vale Road area in Oakton *



Visit our decorated Bellewood Manor model at Sudley Farm
Decorated by Keith Foster of The Designer in 19th & 20th century English antiques
Open Saturdays & Sundays 10-6 16813 Doubleday Rd in Centreville



5 Decorated Model
Homes to tour
in Loudoun County

CarringtonCustomBuilder.com 703-665-6701

Site by Carrington Builders LLC. Photo by House Master Photography



 **Tri-State Stone**[®]
& Building Supply Inc.

301-365-2100
carderock.com





H&D JANUARY/FEBRUARY 2017 INSIDE LOOK PARTY

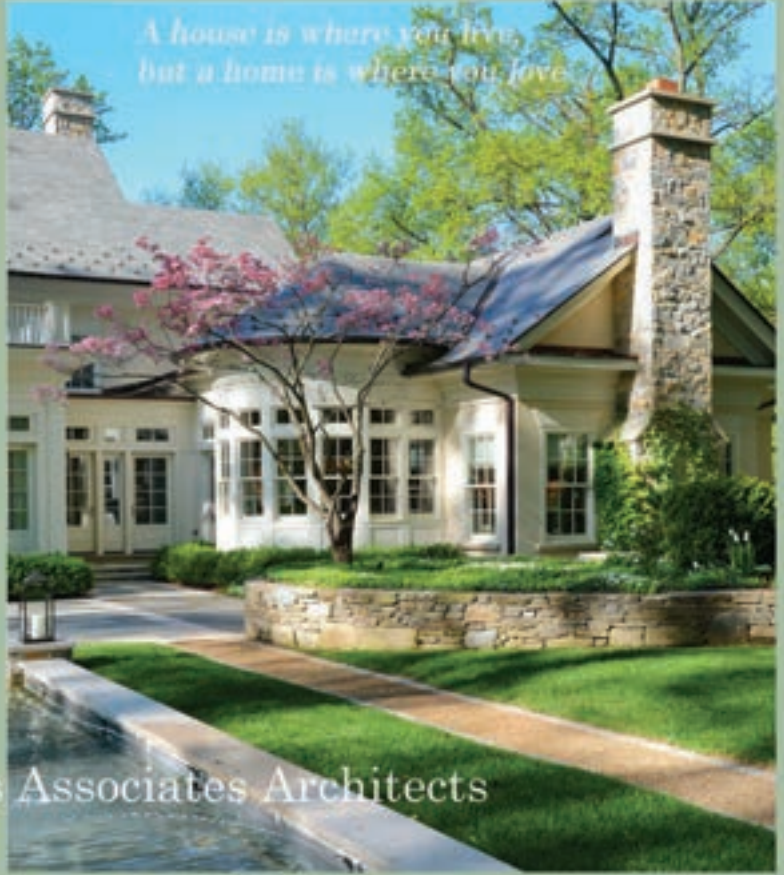


JANUARY 18, 2017—*Home & Design* celebrated the release of its January/February 2017 issue with a convivial event at Jennifer Gilmer Kitchen & Bath in Chevy Chase. Guests mingled and perused the showroom, full of the latest kitchen and bath products and appliances.

- Jonathan Senner, Pamela Harvey, Victoria Sanchez, Mitch Gabor.
- Host Jennifer Gilmer, Susan Jones.
- Homa Nowrouzi, Nadia Subaran, Shadee Nowrouzi.
- Helena Sagart, Vincent Sagart.
- Mary Jo Major, Lisa Puchalla, Sarah Jay, Kirsten Kaplan.
- Quintece Hill-Mattauszek, Barbara Brown.
- John Cole, Christine Philp, Donald Lococo.
- Andrea Houck, Peter Stokely, Kim Josh.
- Robert L. Paxton, Mark T. Bittle, R. David Craig.
- Kerianne Bieger, Camille Saum.



PHOTOS © BOB NAROD & MELODY RUSH



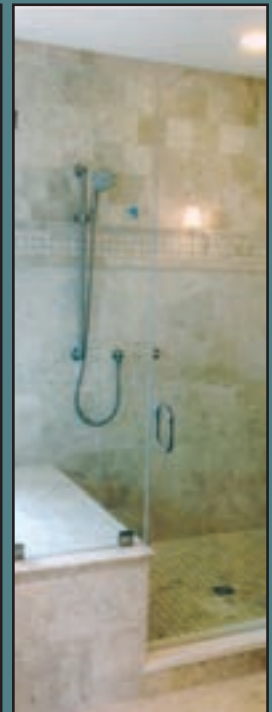
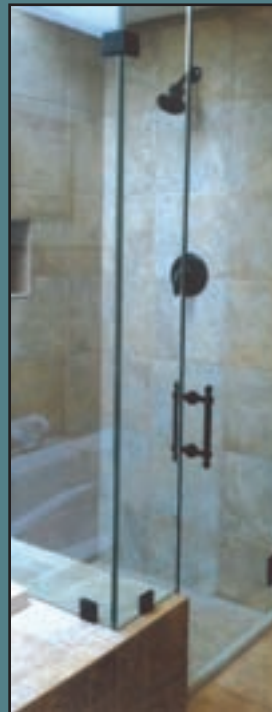
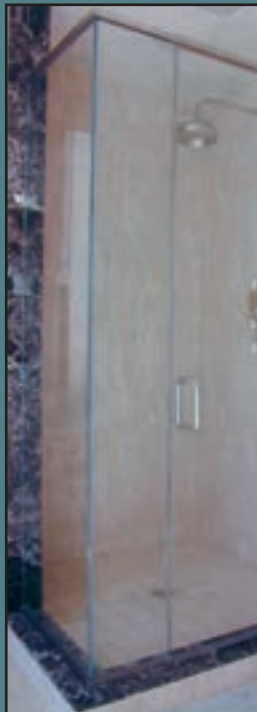
Sutton Yantis Associates Architects
www.syaa.com

SINCE 1920
Hutchison

GLASS & MIRROR, INC.

Distinctive Quality
Fabrication & Installation

Frameless Shower Enclosures
Custom Mirrors
Beveling in Our Facility
Glass Table Tops
Framed Shower Enclosures
Cast Glass
Integral Cabinets



8246 D Sandy Court Jessup, MD 20794 • Tel 301.984.7500 / 301.490.8824 • Fax 301.881.3294
www.hutchisonglassandmirror.com



CRAN HOLIDAY CELEBRATION

DECEMBER 14, 2016—The Capital Area Custom Residential Architects Network (CRAN) and *Home & Design* hosted a festive holiday celebration at Ligne Roset in Washington. Guests toasted the season and browsed the showroom's latest furniture collections.

1. Jonathan Kuhn, John Choi, Portia Strahan, Emily Hirst. 2. Andreas Charalambous, Ernesto Santalla. 3. Karen Germond, Skip Sroka, Paula Grace Halewski. 4. Matt Boley, Christine Simeone. 5. Bruce Wentworth, Eryl Wentworth, Frederick Johnson. 6. *Home & Design* publisher Tod Herbers (center) with Ligne Roset's David Zein and Olivier Valette. 7. Michael Mersch, Rita Ossolinski, Matt Ossolinski. 8. Kyriakos Efthimiadis, Bobby Efthimiadis. 9. John Clark, Michael DeMonaco, Shannon Kadwell, Sean Mullin. 10. Sue Rosenbaum, James Rill, Cynthia Murphy. 11. Nicolette Capuano, Jason Ekus.



PHOTOS © BOB NAROD



AN AWARD
WINNING FIRM
*With an Exquisite
Tile & Custom Cabinetry
Collection*

435 A&B East Diamond Avenue
Gaithersburg, MD 20877
240-361-9331
davidaskitchenandtiles.com



2017 NKBA National Award First Place Small Kitchen



Distributed Audio & Video • WiFi & Wired Networks
Automation & Control • Home Theater • Video Surveillance
Alarm & Access Control • Lighting & HVAC Control
Motorized Shading



Schedule a FREE consultation:
703-464-0736 • www.imsva.com





1/ ART ONLINE

The Artist Collective, an online art gallery, has expanded to the DC area. The Capitol Artist Collective (CapAC) features the work of local artists based from Baltimore to Charlottesville. Themed collections of original paintings are offered each month, with five percent of the profits going to a local charity. Pictured left, an acrylic and oil on canvas by Lauren Adams. capitol.artistcollectives.org

2/ LET THERE BE LIGHT

Wood-Mode is partnering with German company Häfele to produce cabinets with integrated LED lighting designed for drawers, shelves, toe kicks, vanity frames, wardrobe poles and more. Door sensors and remote, programmable switches are also available. Wood-Mode cabinetry can be purchased through Davida's Kitchen & Tiles in Gaithersburg. davidaskitchenandtiles.com; wood-mode.com

3/ MODERN MAGIC

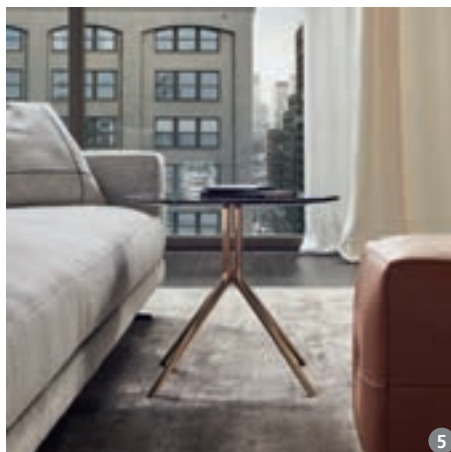
Baltimore's Home on the Harbor has undergone a renovation and a name change. Now called Design Distillery, the 9,500-square-foot bastion of modern design carries more than 50 furniture and accessory lines including Knoll, Blu Dot, American Leather and Normann Copenhagen; staff designers offer comprehensive plans to customers. 1414 Key Highway. ddistillery.com

4/ GRAND OPENING

The Shade Store has debuted its second DC-area storefront, this one in Georgetown's Cady's Alley. The 3,000-square-foot space boasts interactive design displays; swatches are available from a collection of more than 900 materials for draperies and roller, solar and Roman shades. Products are handcrafted in the U.S. and ship for free in 10 days or less. 3324 M Street, NW. shadestore.com

5/ TABLE TOP

Designed by French architect Jean-Marie Massaud, the lightweight Cosmos table for Poliform conjures a mid-century modern vibe with its chic, slim silhouette. Available as a coffee, occasional (pictured) or console table, it pairs a base of bronze-cast aluminum with a top of marble, wood or lacquer. Available through Poliform | sagartstudio in DC. poliformdc.com





Architects & Builders

ARCHITECTURE
 INTERIOR DESIGN
 CONSTRUCTION
 REMODELING

www.wentworthstudio.com
 240.395.0705
 8555 Connecticut Ave., Suite 200
 Chevy Chase, Maryland 20815

WE DWELL ON THE DETAILS
 YOU DWELL IN THE DETAILS

PUSH
 DECORATIVE
 PULL

VISIT OUR SHOWROOM: PROUDLY FEATURING:
 12156 NEBEL STREET
 NORTH BETHESDA 20852
 (240) 669-4130

TURNSTYLE
 HARDWARE
 MADE IN AMERICA

WWW.PUSHPULLHARDWARE.COM

ATELIER
 jonathanSENNER

JONATHAN SENNER
 CERTIFIED INTERIOR
 DECORATOR

www.jonathansenner.com 202 | 577-1141



HMWForge.com

The Kitchen Bible

with insights from Kitchen Guru
JENNIFER GILMER



244 Pages

\$35.00

Nearly 250 full color photos

Get your copy today!
To Order: Visit gilmerkitchens.com
(available at Amazon.com)

Afternoon Delight

**CAHILL
DESIGN
BUILD**

Kitchen | Bath | Cabinetry | Additions | Remodeling
p.202-363-4626 | www.cahilldb.com

ARCHITECTS | BUILDERS | COMMUNITIES | PRIME PROPERTIES

LUXURY HOMES



In this issue, we profile a company that has put its own spin on the custom-homes market. Acorn Deck House Company custom designs and fabricates luxurious houses of all shapes, sizes and styles in its Acton, Massachusetts, factory—then ships the parts all over the world to be constructed onsite. The results—including a home in Locust Grove, Virginia, with its dining room pictured left—combine bespoke, client-driven details with a speedy, efficient process. For a more traditional custom home, check out our Notable Listing—a sprawling McLean, Virginia, residence built in transitional style that nestles beautifully into its secluded, terraced lot. Also in the issue: new luxury-home communities, model homes, industry news and more.

Industry UPDATE

Universal Design

Universal Design—which allows homeowners to age in place—is a new category in *Remodeling Magazine's* 2017 *Cost vs. Value* annual report, which states that a universally designed bathroom recoups 68.4 percent of its cost during resale. That's more than a traditional bathroom remodel, which recoups 64.8 percent. Also recouping their costs at a high rate: fiberglass attic insulation (107.7 percent) and steel entry doors (90.7 percent).

Healthy Choices

For many, a new kitchen means a healthier lifestyle. The 2017 U.S. Houzz Kitchen Trends Survey polled more than 2,700 American homeowners with renovations in progress or just completed, finding that 33 percent of respondents reported a healthier lifestyle post-renovation: 41 percent are cooking more meals at home, while 76 percent are cooking five or more meals at home per week. Other healthy habits included eating less takeout (34 percent) and more fruits and vegetables (26 percent).

Housing Starts Up

According to estimates from the Census Bureau and the Department of Housing and Urban Development, 2016 saw single-family construction improve 9.3 percent over the 2015 level. Housing starts rebounded in December, as monthly volatility for multifamily starts continued. Total starts were up 11.3 percent to a 1.226 million seasonally adjusted annual rate. However, single-family starts posted a small monthly decline.



The living room of a model home in Van Metre's Estates at Bull Run.

WHO'S BUILDING WHAT

High Style in Haymarket

Located in the foothills of Bull Run Mountain near Haymarket, Virginia, Van Metre's Estates at Bull Run Golf Club encompasses 26 homes sited on three to four acres each, featuring three to seven bedrooms, two-and-a-half to five-and-a-half baths and three-car garages in 2,412 to 3,318 square feet of living space. Homes showcase breathtaking views of the mountain and golf course. Van Metre has created six distinct home styles for the community. Buyers can choose among one-level ranch-style designs with optional two-story layouts. The 450-acre, 18-hole championship golf course was named best new public course by *Golf Magazine* when it opened in 1999. Prices start at \$676,990. 703-764-5470; vanmetrehomes.com



Stanley Martin's Selma Estates.

boutiques, is only minutes away. Prices start at \$599,990. 703-935-4320; stanleymartin.com

Rolling Hills

Stanley Martin is offering new single-family homes in the Leesburg, Virginia, community of Selma Estates, which is set among the rolling hills and open fields of the Loudoun County countryside. These large estate homes enjoy sites ranging from a half to 10 acres—many with panoramic views of Sugarloaf Mountain. Floor plans include four or five bedrooms and two-and-a-half to six-and-a-half baths. Homes range in size from 3,285 to nearly 9,000 square feet. The community boasts amenities that include a swimming pool, paved walking trails and parks. Downtown Leesburg, with its cafés and

Wooded Views

Williamsburg Homes' new Stanmore community in Olney, Maryland, is a secluded enclave of 13 homes located on two cul-de-sacs with one-third to one-half-acre home sites. Each property backs onto a protected conservation area, and the houses have been sited to maximize privacy and views. Seven available home designs range from 3,270 to 5,196 square feet. The community's Rutledge model—currently open for tours—is the largest of the seven with four or five bedrooms, three-and-a-half to five-and-a-half baths and luxury appointments throughout. Optional features include a wrap-around porch, a conservatory and a morning room. Priced from the low \$900s. 410-707-3062; williamsburgllc.com

Acorn Deck House Company

Prefabricated Custom Homes



Acton, MA • 800.727.3325 • AcornDeckHouse.Com

TOP CUSTOM BUILDERS

ALM Builders
2929-J Esridge Road
Fairfax, VA 22031
202-222-8777
www.almbuilder.com

Bowers Design Build
6715 Whittier Avenue, Suite 200
McLean, VA 22101
703-506-0845
www.bowersdesignbuild.com

Gulick Group
11790 Sunrise Valley Drive
Suite 225
Reston, VA 20191
571-293-1234
www.gulickgroup.com

**Michael Nash
Custom Homes**
8630-A Lee Highway
Fairfax, VA 22031
703-560-5900
michaelnashcustomhomes.com

Mueller Homes, Inc.
7520 Main Street,
Sykesville, MD 21784
410-549-4444
www.muellerhomes.com

Tatari Construction
2751 Prosperity Avenue, Suite 400
Fairfax, VA 22031
703-560-5900
tatariconstruction.com

Please direct inquiries about participating in the directory to sales@homeanddesign.com

LUXURY HOMES | BUILDER REPORT



A living/dining room in the Amy model, on view at Richmond American's Cloverly Forest.

Cul-de-Sac Living

Richmond American's Cloverly Forest in Silver Spring, Maryland, offers stylish homes on wooded, cul-de-sac lots ranging from a quarter to a third of an acre. The 2,600-square-foot, two-story homes include four or five bedrooms, two-and-a-half to four-and-a-half baths and two-car garages. The Amy model, which is open for tours, encompasses a main floor with a two-story entry, formal living and dining rooms, an expansive great room and a kitchen with a center island and optional gourmet appliances. A lavish master suite boasts an oversized walk-in closet. Other optional extras include a sunroom and a wrap-around porch. Priced from the mid-500s. 410-312-2828; richmondamerican.com

Posh Housing in Poolesville

Kettler Forlines' Kenwood model is available at The Reserve at Brightwell Crossing, a Poolesville, Maryland, enclave. Homes in the community are sited on lots ranging from one-half to more than one acre, backing up to parkland and woods. Buyers may choose among 10 floor plans showcasing new designs and luxury features. The Kenwood model encompasses an attached guesthouse complete with living room, kitchenette, bedroom, bath, laundry and a private entrance. Homes at The Reserve at Brightwell Crossing are Energy Star- and Indoor AirPlus-certified. From \$649,900; the Kenwood model starts at \$763,900. 301-208-2588; brightwellcrossing.com




The master bedroom in Kettler Forlines' Kenwood model at The Reserve at Brightwell Crossing.



Luxury Custom Homes
and Renovations

MERIDIAN HOMES
Concierge level service for every client.

To learn more about us, visit
www.meridianhomesinc.com or
call 301.652.4440



**John F.
Heltzel**
AIA



Architects for Your Lifestyle
703.748.8801
www.HeltzelAIA.com

GUTIERREZ:STUDIOS



ARCHITECTURAL METALWORK : FURNITURE : LIGHTING
BALTIMORE : 410 889 5341 : GUTIERREZSTUDIOS.COM



Made to Order

Acorn Deck House Company's custom homes are manufactured in the factory and assembled on site

Acorn Deck House Company occupies an unusual niche in the post-and-beam, custom-housing market. Within the walls of its 85,000-square-foot factory in Acton, Massachusetts, the company manufactures the prefabricated components of custom homes it has designed in all shapes, sizes and styles. Once the parts are completed, they are shipped to building locations around the country and abroad, where local contractors oversee their assembly.

With 30 employees, Acorn Deck House Company handles all aspects of each project from inception until the components leave the factory. The process begins with a meeting between the client and a project director. “Our project directors get the big picture, the client’s wish list, what they’re looking for in a home,” says marketing coordinator Valerie Graham. After the client makes revisions, the project director relays the plan to the design department, which tailors the home to the client’s specifications.

A panelization department then breaks down the drawings into components: beams, posts, wall panels averaging eight-by-eight-feet and more—“the nitty-gritty details of the customer’s plan,” Graham says. Those are then sent to the factory for the fabrication process.

Acorn Homes began life in 1947. Deck House was launched in 1959, and the two companies joined forces in 1995, becoming Deck House, Inc. In 2009, the company was purchased by president Tom Trudeau, who merged the names. Today, there are three divisions: Acorn Homes, which designs traditional houses; Deck House, which designs with a contemporary aesthetic featuring exposed post-and-beam frames; and NextHouse, which is more modern than the Deck House system with cleaner lines and flat roofs. A fourth system, Collaboration, allows outside architects to bring plans to Acorn for fabrication.

The benefits of a prefab custom home are many—starting with predictability. “Since most of our building takes place in the factory and has so much planning behind it, our estimates tend to be very on-point, with no hidden costs or surprises,” Graham explains. “Customers see from the renderings in the beginning exactly what the finished product is going to look like.”

Additionally, there is very little waste, as the in-house production process utilizes almost all materials—and weather is never an issue,



A 9,200-square-foot home (opposite) in Locust Grove, Virginia, was designed for a retired couple and built by Shepherd Construction Company. The front entry (below) opens to the main-floor great room (left), which affords dramatic views of the 400-acre property. The lower level (bottom) offers room for relaxing and playing pool.



RIGHT AND OPPOSITE, FAR LEFT © ADAM WEYLAND



index of advertisers

for more information on these businesses go to homeanddesign.com/productsandservices

A.B.E. Networks.....	153	Davida's Kitchen & Tiles.....	74	Pat Stack, Weichert Realtors.....	178, 179
AV Architects + Builders.....	75	Dominion Electric Supply Company.....	154	Porcelanosa.....	IFC
Absolute Kitchens, Inc.....	85	Donald Lococo Architects.....	149	Purple Cherry Architects.....	27
American Automation.....	155	Electronic Home Environments.....	154	Push Pull Decorative Hardware.....	83
Appliance Distributors Unlimited.....	79	Ferguson.....	77	Quality Window & Door.....	45
B & F Ceramics Design Showroom.....	68	Fretz.....	39	Reico.....	BC
B. Watkins & S. Benson, Benson & Mangold.....	184	Gilday Renovations.....	69	Roche Bobois.....	21
Barbara Hawthorn Interiors, Ltd.....	16	Great Falls Construction.....	17	Rockville Interiors.....	159
Bel Pre Glassworks, Inc.....	81	Green Front Furniture.....	33	Ron Mangas, Jr, TTR Sotheby's.....	181
Best Tile.....	25	Gutierrez Studios.....	159	Samantha Friedman Interior Designs, LLC.....	156
Bob Narod, Photographer, LLC.....	144	Hammond Wilson.....	4	Scavolini.....	14
BoConcept.....	5	Hutchison Glass & Mirror, Inc.....	68	Sheridan MacMahon Realtors.....	183
Botanical Decorators.....	51	Jack Rosen Custom Kitchens.....	41	Sroka Design Inc.....	10
Bowers Design Build.....	87	Jennifer Gilmer Kitchen & Bath.....	71	Stona.....	IBC
Cahill Design Build.....	83	John Edelmann, Coldwell Banker.....	182	Sue & Allison Goodhart, McEneaney.....	185
California Closets.....	15	John F. Heltzel, AIA, Architects.....	159	Surrounds Landscape Architecture.....	23
Calligaris.....	37	Karpet King.....	30	Susan Gulick.....	19
Campion Hruby Landscape Architects.....	149	Ligne Roset.....	13	TW Perry.....	49
Carnemark.....	56	Loewen Window Center.....	18	Talout International LLC, Long & Foster.....	176, 177
Carpet Creations.....	50	Lynda O'Dea, Long & Foster.....	186	The Appliance Source.....	85
Carrington Homes.....	149	M. Teixeira Soapstone.....	76	The Greenbrier.....	2, 3
Casey Margenau Fine Homes & Estates.....	191	Marble Systems.....	73	The Lauren.....	1
Citizens One.....	164	Marc Fleisher, TTR, Sotheby's.....	187	Tom & Cindy & Associates.....	180
Clark Hall Doors.....	145	Marin Hagen, Coldwell Banker.....	175	Tri-State Stone.....	145
Cliffside Industries.....	87	Maxine Schnitzer Photography.....	83	US Cabinet Depot.....	76
Closet Factory.....	22	McHale Landscape Design.....	6, 7	Wentworth Architects & Builders.....	81
Closets by Design.....	29	Michael Nash Design Build.....	8, 9	Wetherly & Karen Barker, Sotheby's TTR.....	189
Cochran Studios.....	147	Monarch Design DC.....	40	Wine Cellars by Lisa.....	35
Creig Northrop Team, Long & Foster.....	188	Olamar Interiors.....	35		

TOP REALTORS

Specializing in Luxury Properties

Wetherly and Karen Barker
TTR Sotheby's International Realty

Specializing in:

- ▶ Luxury Residences & Historic Properties
- ▶ Licensed in DC, MD and VA



thebarkerteamva.com
703-928-8384

John Edelmann & Jeff Love
Coldwell Banker/The Edelmann Love Group

Specializing in:

- ▶ Luxury homes in Washington, DC and Arlington, VA



dcmetroagents.com
202-423-6900

Marc Fleisher
Long & Foster

Specializing in:

- ▶ Bethesda, Chevy Chase, Potomac & NW Washington, DC



thefleishergroup.com
202-364-5200 x2927

Ron Mangas Jr.
TTR Sotheby's International Realty

Specializing in:

- ▶ Modern Contemporary Homes in Metropolitan DC



contemporarylistings.com
703-298-2564

Casey Margenau
Fine Homes & Estates

Specializing in:

- ▶ Northern Virginia
- ▶ Newer Fine Homes



margenau.com
703-827-5777

Lynda O'Dea
Legendary Homes/Long & Foster

Specializing in:

- ▶ Bethesda, Chevy Chase, Potomac
- ▶ McLean & NW DC



legendaryhomes.com
240-988-4400

Tom Pietsch and Cindy Schneider
Tom & Cindy and Associates, Long & Foster

Specializing in:

- ▶ Northern Virginia
- ▶ Washington DC



HelloVirginia.com
703-822-0207

Fouad Talout
Long & Foster

Specializing in:

- ▶ Luxury Real Estate
- ▶ Exclusive confidential representation
- ▶ MD, DC & VA



fouadtalout.com
703-459-4141

Pat Stack, Esq.
Weichert, Realtors

Specializing in:

- ▶ Fine Homes throughout Northern Virginia



patstackhomes.com
703-597-9373

*Want to see your name or business here?
Contact our sales team today!*

240-328-6275
Sales@HomeandDesign.com

Barbara Watkins
Benson & Mangold Real Estate

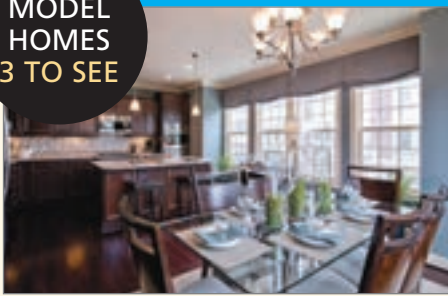
Specializing in:

- ▶ Talbot, Queen Anne, Dorchester, Caroline
- ▶ \$500,000 & up



easternshorehomes.com
410-310-2021

MODEL
HOMES
3 TO SEE



Potomac Overlook

The last two residences have been released for sale at Integrity Homes' Potomac Overlook, located in Prince George's County's National Harbor community. Two brownstone townhome models are now open for touring, including the 2,960-square-foot Patuxent model, with three or four bedrooms and three-and-a-half to four-and-a-half baths. From the low \$500s. 703-887-1364; yourintegrityhomes.com



Timber Lake

Winchester Homes' Camberley Homes division is offering final buying opportunities at Timber Lake, a cul-de-sac community in Oakton, Virginia. Homes boast a first-floor study and three-car garage, per plan. Kitchens feature Aristokraft maple cabinetry and granite countertops. The Randall II model is available for immediate delivery. From \$1.4 million. 240-517-1050; winchesterhomes.com



Metro Row

NVHomes' Metro Row at Vienna Station provides modern, sophisticated townhome living. Residents enjoy optional rooftop terraces and elevators, plus close proximity to the Mosaic District with its popular restaurants, shops and seasonal weekend farmers' market. NVHomes is featuring three luxury townhome designs in the community. From the \$790s. 703-272-7635; nvhomes.com



NOTABLE LISTING

Built in 1987, this 5,600-square-foot, four-bedroom, seven-bath home in McLean, Virginia, is situated on three acres. Nearly every room of the five-story abode boasts its own landscaped terrace—some complete with koi ponds—while skylights and abundant, oversized windows bring the landscaped outdoors in. An airy kitchen features an attached greenhouse. A top-level master suite offers his-and-her walk-in closets; the opulent bath includes a spa tub and his-and-her showers and vanities. Other details include hardwood, tile and carpet; built-in shelves and cupboards; four fireplaces; and a wet bar. 839 Towlston Road; \$2,300,000. Inquiries: Mindy Venuto, Wydler Brothers Real Estate. 703-930-5600; mindy@wydlerbrothers.com

BY THE NUMBERS

Decade High

According to the National Association of Realtors, 2016 was the best year for existing-home sales nationwide since 2006, despite a decrease by almost three percent in December. The figures included condos, co-ops and single-family homes.

Contracts Up

"Contracts signed in Northern Virginia in December increased by more than 15 percent compared to December 2015," says Northern Virginia Association of Realtors chairman of the board Bob Adamson. "Buyers who closed in December took advantage of low interest rates during our slow season." 1,558 homes sold in December 2016, compared to 1,623 homes during the same month in 2015.

Inventory Down

Steady home sales marked the end of 2016, according to Maryland Association of Realtors president Shelly Murray, who noted that for the first time in eight years, every county in Maryland saw its inventory of unsold homes fall to below one year's worth.

\$23
MILLION

The reported selling price for the 27,000-square-foot Kalorama mansion purchased in cash by Amazon founder and CEO Jeff Bezos, who owns The Washington Post.

TOP 10 HOME SALES

PRICE	ADDRESS	CITY, STATE
\$5,000,000	1125 Crest Lane	McLean, VA
\$4,066,233	800 Turkey Run Road	McLean, VA
\$3,767,500	946 Hickory Run Lane	Great Falls, VA
\$3,700,000	1881 N Nash Street, Unit 2201	Arlington, VA
\$3,200,000	8305 Randwood Street	McLean, VA
\$3,200,000	2014 Franklin Avenue	McLean, VA
\$3,100,000	3628 Davis Street NW	Washington, DC
\$3,100,000	8753 Bozman Neavitt Road	St Michaels, MD
\$3,100,000	601 Fairfax Street N #203	Alexandria, VA
\$2,977,503	4953 Rock Spring Road	Arlington, VA

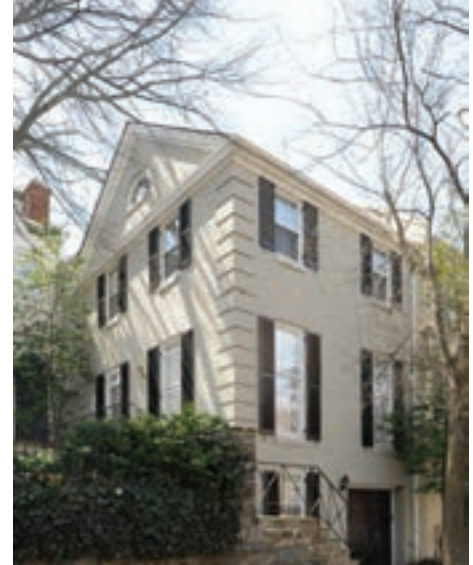
The Best of Washington, DC Homes Sold in 2016



Spectacular Logan Circle Home
1429 Q Street, NW Sold \$2,007,000
Sold over asking



DC Classic
1611 13th Street, NW
Sold \$1,690,000



Spectacular Georgetown Home
3312 R Street, NW Sold \$2,150,000



Charming Wesley Heights Home
4519 Klinge Street, NW Sold \$1,620,500



Gracious Van Ness Home
2951 Albemarle Street, NW Sold \$1,875,000
Sold over asking

If you are looking to list and sell your home in 2017 and want to maximize your return please call us for a free confidential value analysis and strategic planning meeting. We offer full service brokerage: interior and exterior home preparation, staging advice, excellent marketing online and in print. Get ready for the Spring selling season now while inventories are low.

We offer full service sales in the Metro Area and specialize in Washington DC, Arlington and Alexandria, Chevy Chase and Bethesda MD. Please call John, Jeff or Chadley at 202-423-6900.

EDELMANN LOVE TOREGAS GROUP | RESIDENTIAL & COMMERCIAL BROKERAGE
INTERNATIONAL PRESIDENT'S ELITE TEAM | COLDWELL BANKER RESIDENTIAL BROKERAGE-GEORGETOWN
1101 30th Street, NW, Suite 120, Washington DC 20007 | **202-333-6100**



202-333-6100

“IF WINTER COMES, CAN



9896 Palace Green Way



Gated Community Close to Metro!

You really can have it all... An authentic Williamsburg colonial in the sought-after gated community of Williamsburg Commons in Vienna. This beautiful home features 4 Bedrooms and 3.5 Baths with a 2 Car Garage and over 3,100 square feet of light-filled space. Family Room is wide open to the Cherry & Granite Kitchen with Spacious Center Island. Enjoy a Main Level Master Suite and Main Level Study! Gleaming Hardwood floors throughout. Dual staircases ascend to 2 Upper Levels. Relax on a Private Patio nestled under a Pergola surrounded by lush Gardens. Community In-ground Pool and exquisitely manicured Common Green offers low-maintenance living for those who travel frequently or are too busy for weekend yardwork! Walk to Vienna Metro! 9896 Palace Green Way in Vienna, offered at only \$965,000.



*“Lawyers * Make Great Realtors”*

AN INTELLIGENT APPROACH TO REAL ESTATE

**Member D.C. Bar only, inactive status*

SPRING BE FAR BEHIND?"

--- PERCY BYSSHE SHELLEY



2642 Oak Valley Drive



Versatile Design!

This Home is like no other. Custom-built Masterpiece sited on a private 1.1 Acre lot in convenient Vienna, 2642 Oak Valley Drive boasts an open floorplan and amazingly versatile design. With 6 spacious bedrooms and 5.5 Baths and roughly 8,000 square feet, this home even offers two distinct living spaces for your nanny, adult child or in-law. An annex with a separate entrance, currently being used as an artist studio, has easy access to the outdoors. A complete apartment, including partial kitchen, on the walkout lower level also offers that possibility. Meanwhile, the house itself amazes, with gracious room sizes, a large maple kitchen with breakfast room, and a luxurious master suite with its own private balcony, overlooking the wooded backyard. 2642 Oak Valley Drive is located just 10 minutes from Tysons and 5 minutes from the Vienna Metro. Offered at only \$1,699,900.

#2 Weichert Agent Nationwide

OVER \$250 MILLION SOLD IN 2012-2016!



156 Maple Ave. East
Vienna, VA 22180

PAT STACK, ESQ.
Realtor®

Home Office: 703-620-5115
Cell: 703-597-9373
pat@patstackhomes.com
PatStackHomes.com



Fouad Talout

Long & Foster, Inc.
McLean, Virginia

703-459-4141

fouad.talout@gmail.com



RENEWABLE ENERGY

1134Basil.com
\$5,750,000 McLean, VA



PRESTIGIOUS LANGLEY

1091LangleyFork.com
\$3,480,000 McLean, VA



AWARD-WINNING HOME

10306Elizabeth.com
\$3,995,000 Great Falls, VA



5 ACRES RIVERFRONT

7020GreenOak.com
\$5,800,000 McLean, VA



COMING SOON!

8411Brookewood.com
McLean, VA



GOLF CART COMMUNITY

11308Hearth.com
\$ 2,650,000 Great Falls, VA



COMING SOON!

8010GreenwichWoods.com
McLean, VA



EIGHT OAKS

11206RichlandGrove.com
\$3,480,000 Great Falls, VA



GLAMOROUS ELEGANCE

1198Windrock.com
\$4,800,000 McLean, VA



POOL

10716FallsPointe.com
\$1,495,000 McLean, VA



BALLANTRAE

1173DolleyMadison.com
\$5,450,000 McLean, VA



HISTORIC CASTLE

5446Mohican.com
\$2,300,000 Bethesda, MD



BALLROOM!

1005UnionChurch.com
\$1,995,000 McLean, VA



18 ACRES 35 MIN TO D.C.

10606Belmont.com
\$1,999,000 Lorton, VA



5-ACRE HOMESTEAD

9112PotomacRidge.com
\$1,195,000 Great Falls, VA



SUMMIT ESTATE

5335Summit.com
\$6,950,000 Fairfax, VA

LET FOUAD AND HIS TEAM ASSIST WITH ALL YOUR REAL ESTATE NEEDS!

Licensed in D.C., MD, VA





Fouad Talout

Long & Foster, Inc.

McLean, Virginia

703-459-4141

fouad.talout@gmail.com



Washington D.C. Metro's Most Exclusive Luxury Properties



PALACE GROVE ESTATE

Potomac, Maryland

10020Chapel.com



This magnificent 7.46-acre property combines an existing 27,000 sq. ft. residence with a new to-be-built guest, entertaining and sports complex to become the area's most impressive private luxury compound! The 9-bedroom, 16-bath main house boasts marble reception hall, sumptuous master suite, Neff gourmet kitchen. Amenities to be built include a guest house, art gallery, staff annex, sports pavilion, tennis court, indoor pool, golf simulator, and underground garage. **Offered for \$23,000,000**



CONGRESSIONAL CHATEAU

Potomac, Maryland

9004Congressional.com

This stately chateau of captivating elegance is among the finest properties in D.C. Metro. Over 27,000 sq. ft. across the 4-level main residence and pool house offer the ultimate in fine living and gracious entertaining. Features include 9 bedrooms, 12 baths, an owner's oasis, multiple guest suites, ballroom, 2-story library, his/her offices, cinema, gourmet kitchen, catering kitchen, service quarters, elevator, outdoor pool and pool house with caretaker's apartment. **Offered for \$10,480,000**

LET FOUAD AND HIS TEAM ASSIST WITH ALL YOUR REAL ESTATE NEEDS!

Licensed in D.C., MD, VA



Maryland's Eastern Shore Properties



WWW.READBOURNE.COM

Located in Queen Anne's County the estate overlooks a series of terraced "falls" which carry the symmetry out into the garden and overlooks the Chester River. Offering multiple parcels with dependencies & encompasses nearly 1,000 acres.



Black Walnut Cove | Tilghman Island, Maryland

Chesapeake modern contemporary designed to capture the natural beauty of the water and wildlife of the eastern shore. You'll be captivated by the dramatic sunset views over Black Walnut Cove. This low maintenance home offers open concept, fabulous owners suite, waterside saltwater pool with outdoor shower and oversized garage, all on over 6 private acres. **\$950,000**



Bolingbroke Creek | Trappe, Maryland

Custom designed home has large studio rooms with wide windows looking at woods & water. Bright & open floor plan with gourmet kitchen, sunroom and fabulous first floor owners suite. 350' waterfrontage & sunset views. **\$1,595,000**



Tred Avon River | Easton, Maryland

Immaculate custom built brick home located in the community of Easton Club offers waterside in-ground pool, high ceilings, open floor plan, fabulous first floor owners suite with gas fireplace, office and luxury bath. **\$845,000**



Newcomb Creek | Easton, Maryland

Immaculately maintained 4 bedroom waterfront home minutes to St. Michaels & Easton. Sited on over 2 acres with open living area, owners suite, living & family rooms, pool, pier with lift, breezy screened porch. **\$1,079,000**



Tred Avon River | Oxford, Maryland

Located on the South end of Morris St and containing almost an acre of land this, 4 bedroom Cape was fully renovated in 2009 and enjoys tremendous privacy, mature trees, sunset views, a pool, first floor master suite and open floor plan. **\$1,495,000**



Glebe Creek | Easton, Maryland

This classic Eastern Shore "telescope" house is a handsome example of Federal Architecture with early features through-out. The largest section of the house dates to the late 1700s. Located on Glebe Creek, just minutes to Easton. **REDUCED**



Tred Avon Water views | Oxford, Maryland

Beautifully built 4 bedroom Cape with wood floors, living room and den both with wood burning fireplaces, kitchen has top of the line appliances, and breezy screened porch with patio. **Www. .com \$675,000**



Barbara Watkins, 410.310.2021

barb.c.watkins@gmail.com

www.EasternShoreHomes.com



Schuyler Benson, 410-310-3251

sbenson@bensonandmangold.com

www.BensonandMangold.com



Benson & Mangold Real Estate | 410-822-1415 | 27999 Oxford Road, Oxford, Maryland 21654



thefleishergroup

SENSATIONAL CUSTOM HOME
EXQUISITE PROPERTY WITH EXPANSIVE YARD



SOUGHT-AFTER SPRING VALLEY • NW WASHINGTON DC

Originally built by and for acclaimed builder, Jim Gibson, this fabulous craftsman influenced colonial sits on a double lot with exquisite yard and mature landscaping and gardens. Beautifully designed and incorporating custom millwork, superior materials and expert workmanship, this special home is for the most discerning buyers. Ideally located in the Spring Valley community on a quiet street, the home is only minutes to the finest private schools, Georgetown and the heart of downtown DC. Offered at \$3,895,000.

EXCLUSIVELY OFFERED BY **THE FLEISHER GROUP**

MARC FLEISHER • marc@thefleishergroup.com

Chevy Chase, MD Brokerage +1 240 235 0181 • Cell + 1 202 438 4880

LEE ARROWOOD • lee@thefleishergroup.com

Chevy Chase, MD Brokerage +1 240 235 0184 • Cell + 1 202 251 3175

THEFLEISHERGROUP.COM • ttrsir.com





Mount Gordon Farm

The Plains, Virginia

128 acres and immaculate 3 level, 13,000+ sq ft stone & shingle main house with 5 BR and 8 FP. Exceptional finishes on every floor. 4-car garage, terraces. Caterer's kitchen, elevator, spa, professional offices. Separate guest cottage, pool, farm manager residence. 3 additional tenant residences. 12 stall center-aisle stable. Extraordinary land with incomparable views extending beyond the Blue Ridge Mountains. Orange County Hunt. \$11,750,000.

Helen MacMahon (540) 454-1930



Silcott Springs Farm

Purcellville, Virginia

Traditional fieldstone house, circa 1790 with 2009 addition and renovations. 4 bedrooms, 3 1/2 baths. 6 fireplaces. High ceilings. Gourmet kitchen. Guest house, barn, spring house, run in sheds. 44.61 fenced & usable acres. Spring fed pond. \$1,850,000.

Paul MacMahon (703) 609-1905



Cadore

Middleburg, Virginia

Custom-built stone & stucco home. 4+ bedrooms include 1st floor master. Gourmet kitchen. Home office with T-1 line, VIP security system and home automation. 4 stone patios. Perennial gardens and large mature trees. 3-car garage. Gated entrance, pristine grounds, 1 acre pond, barn on 24 acres. \$1,800,000.

Paul MacMahon (703) 609-1905
Helen MacMahon (540) 454-1930



Greystone

The Plains, Virginia

Circa 1807. 33 acres ideally located between Middleburg & The Plains. Rare quarried stone exterior, 10-foot ceilings. Period mantels, original wood floors, two-story front porch. 3 bedrooms/ 3 baths, each a private suite. Historic stone barn includes one bedroom/bath apt, heated tack room, 6 stalls. Carriage barn. 3 paddocks, large turnout field, run-in sheds, auto waterers. Whole farm generator. Pond. Orange County Hunt. \$1,700,000.

Helen MacMahon (540) 454-1930



Willow Way Farm

Middleburg, Virginia

Prime Middleburg location. House completely redone in 2004. Hill top setting with panoramic mountain views. 3 bedrooms, 3.5 baths. Main level master suite. Pine floors. Beautiful millwork. 3 fireplaces. Attached 2-car garage. Beautiful windows. Gracious room sizes. 4-stall barn. Riding ring. In-ground pool. Lovely gardens. 31.05 acres recorded in 3 parcels. \$1,625,000.

Paul MacMahon (703) 609-1905



The Hague-Hough House

Waterford, Virginia

Hill top setting in historic village of Waterford. Circa 1745 brick and stone home on 17.20 acres. 6 bedrooms, 5 baths and 7 fireplaces. Beautiful woodwork throughout. High ceilings. Meticulous renovation. Improvements include barn with apartment. Garage space for 6 vehicles. In-ground pool. Large pool house. Stone outbuildings. Lovely gardens. \$1,495,000.

Paul MacMahon (703) 609-1905



Echo Hill

The Plains, Virginia

Stone English country home in top location between Middleburg & The Plains on 13 acres. 4 BR home with new kitchen & main level master suite. Hardwood floors, built-in book cases, fireplaces & bright open family room. Bluestone terrace overlooks new pool & entertaining area. Separate guest cottage/pool house & garage. Whole-house generator. \$1,250,000.

Helen MacMahon (540) 454-1930



Janney Street

Waterford, Virginia

Custom built Quaker reproduction in Historic Waterford. Brick and frame home. Beautiful woodwork and wood floors. High ceilings. Grand rooms. 4 bedrooms, 3 1/2 baths. 4 fireplaces. 2 separate lots. 3 car garage. \$996,000.

Paul MacMahon (703) 609-1905



6428 Main Street

The Plains, Virginia

Gorgeous country home • Historic village • Panoramic views • 3 acres • Beautifully landscaped grounds with terraced herb garden and pool • 3 BR, 2 full + 2 half baths • Master bedroom w/gas FP on main level • Large dining room w/built-in china cabinets • 2 BR upstairs w/shared bath • Lower level family room w/ wood-burning fireplace • Wet bar & french doors to pool area • Recently renovated. \$995,000.

Paul MacMahon (703) 609-1905



info@sheridanmacmahon.com
www.sheridanmacmahon.com



110 E. Washington St.
P.O. Box 1380
Middleburg, Virginia 20118
(540) 687-5588

THINKING ABOUT BUYING OR SELLING THIS SPRING?

SELECTING YOUR AGENT IS THE MOST IMPORTANT STEP.



Karen and Wetherly Barker are a Mother/Daughter team providing you with expertise in real estate. With over 18 years of experience and consistently recognized as top agents in the field, Karen and Wetherly are well acquainted with the real estate market throughout the DC metropolitan area. Whether you are interested in purchasing or selling a home, their property valuation, marketing strategies and contract negotiation skills lead to a successful transaction. Together, they hold real estate licenses in DC, MD and VA.

**VOTED ONE OF WASHINGTONIAN MAGAZINE'S
'TOP PRODUCING TEAMS' IN 2015 AND 2016
\$28 MILLION SOLD IN 2016**

Wetherly Barker
wbarker@ttrsir.com
C: 703-965-9613

Karen Barker
kbarker@ttrsir.com
C: 703-928-8384

TTR Sotheby's International Realty
6723 Whittier Avenue
McLean, VA 22101

O: 703-319-3344
www.thebarkerteamva.com

Legendary Homes™

LUXURY HOMES IN THE NATION'S CAPITAL AND BEYOND

NOT ALL LEGENDARY HOMES ARE FOR SALE



BUT THE ONES THAT ARE REQUIRE SPECIAL REPRESENTATION . . .

If you are considering buying or selling a home in the Washington, DC metro area, visit my website LEGENDARYHOMES.COM to see all the active homes currently on the market. Then give me a call so that we can discuss the best way to accomplish the results that you desire. With a successful background in business, online and traditional marketing, technology and interior design/construction, I provide additional value-added expertise beyond traditional real estate services, striving to continually exceed client expectations. As the #1 team at the #1 office of Long & Foster | Christie's International Real Estate and a Luxury Marketing Specialist — I guarantee you will receive the utmost in professionalism, integrity and discretion.

LONG & FOSTER
REAL ESTATE

CHRISTIE'S
INTERNATIONAL REAL ESTATE

Licensed in DC, MD & VA

LYNDA O'DEA

www.LEGENDARYHOMES.COM

Lynda@LegendaryHomes.com

#1 Team @ #1 Office

Luxury Homes Specialist

Long & Foster | Christie's International Real Estate

Direct 240.988.4400 Office 301.907.7600



Warm up to our winter-specific home selling strategy.

Some people think homes don't sell in December, January and February. Don't be snowed by this... we sold 48 homes during these months last winter. It takes the right plan and the right team. We'll stage your home to make it feel warm. We'll pay the first \$500 towards snow removal to get buyers to your door. We provide shoe-covers so dirt and salt aren't tracked in. Any photos with snow in them are re-shot once the snow melts. We're out in force after storms to make sure signs are straight and looking good. Vacant properties are checked at least twice a week for temperature and condition. We even serve cider and gingerbread cookies at open houses. With our correct pricing, internet syndication, re-targeting, print and relocation networking, you can stay toasty while we work to get you the top price this winter.



TOM & CINDY
AND ASSOCIATES

TomandCindy@HelloVirginia.com
www.HelloVirginia.com • 703-822-0207





Thank You to All of
our Clients for Another
Wonderful Year!

Top 1% All Agents Nationwide | Over \$1 BILLION in sales in our careers

Sylvia Bergstrom
Office: 202.471.5216
Cell: 202.262.3730
sbergstrom@cbmove.com



Marin Hagen
Office: 202.471.5256
Cell: 202.257.2339
mhagen@cbmove.com



© Coldwell Banker Real Estate LLC. Coldwell Banker is a registered trademark licensed to Coldwell Banker Real Estate LLC. An Equal Opportunity Company Equal Housing Opportunity Operated by a subsidiary of NRT, LLC. Real estate agents affiliated with Coldwell Banker Residential Brokerage are independent contractor agents and are not employees of the company. The property information herein is derived from various sources that may not be limited to county records and the Multiple Listing Service and it may include approximations. Although the information is believed to be accurate, it is not warranted and you should not rely upon it without personal verification. Not intended as a solicitation if your property is already listed by another broker. ©2015 Coldwell Banker Real Estate LLC. All Rights Reserved. Coldwell Banker Real Estate LLC fully supports the principles of the Fair Housing Act and the Equal Opportunity Act. Operated by a subsidiary of NRT LLC. Coldwell Banker, the ColdwellBanker logo, Coldwell Banker Previews International and the Previews logo are registered and unregistered service marks owned by Coldwell Banker Real Estate LLC.



THIS IS OUR NICHE.
IT IS OUR PASSION.

CONTEMPORARY LISTINGS [.COM]

Your Resource for Buying and Selling Modern Homes in DC, MD and VA.

The Bridge House. McLean, Virginia | Howeler + Yoon Architecture, LLC | Coming Spring, 2017

Ron Mangas, Jr., Vice President
TTR Sotheby's International Realty
6723 Whittier Ave, Suite 101, McLean, VA 22101
c 703.298.2564 | o 703.319.3344

GIVE
BACK

BEST
NATIONAL
2016



TTR Sotheby's
INTERNATIONAL REALTY

Each Office is Independently Owned and Operated

index of advertisers


for more information on these businesses go to homeanddesign.com/productsandservices

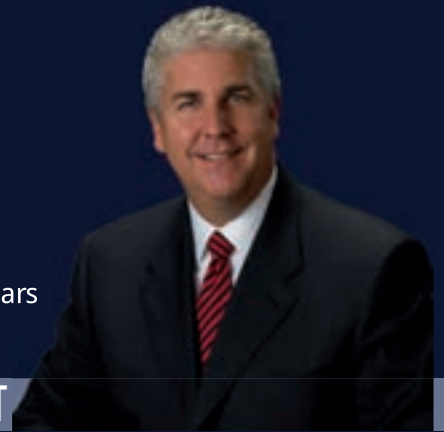
Acorn Deck House Company.....	185	Gutierrez Studios	187	Professional Grounds, Inc.....	92, 93
American Automation	38	HMW Lighting	166	Purple Cherry Architects	23
Appliance Distributors Unlimited.....	39	HMW Forge	182	Push Pull Decorative Hardware	181
Atelier Jonathan Senner	181	Hammond Wilson	44	Pyramid Builders.....	17
AV Architects + Builders	68	Hutchison Glass & Mirror, Inc.	177	Quality Window & Door	55
B & F Ceramics Design Showroom	162	Integrated Media Systems.....	179	Reico	BC
B. Watkins & S. Benson, Benson & Mangold.....	198	Interior Concepts, Inc.....	18	Roche Bobois	21
Barbara Hawthorn Interiors, Ltd.....	56	Jack Rosen Custom Kitchens	19	Rockville Interiors	162
Bel Pre Glassworks, Inc.	171	Jennifer Gilmer Kitchen & Bath.....	25	Ron Mangas, Jr, TTR Sotheby's.....	205
Benjamin Moore	37	Jennnifer Connoley Landscape Design.....	100	Sandy Spring Builders.....	27
Best Tile.....	65	John Edelmann, Coldwell Banker	193	Scapes, Inc	101
Bob Narod, Photographer, LLC	111	John F. Heltzel, AIA, Architects	187	Sheridan MacMahon Realtors.....	200
BoConcept.....	3	Kane Landscapes, Inc.....	88, 89	Sroka Design Inc.	2
Botanical Decorators.....	98, 99	Karpet King.....	163	Stark	IFC
Cahill Design Build	182	KONST	29	Stona	43
California Closets.....	6	Lewis Aquatech.....	104, 105	Stone Center.....	102
Calligaris	33	Ligne Roset	7	Surrounds Landscape Architecture.....	82-85
Campion Hruby Landscape Architects	106	Live Green Landscape Assoc.....	103	Susan Gulick	13
Carpet Creations.....	46	Loewen Window Center.....	16	Sutton Yanits Assoc. Architects.....	177
Carrington Homes	175	Lynda O'Dea, Long & Foster	202	Talout International LLC, Long & Foster....	196, 197
Casey Margenau Fine Homes & Estates.....	207	Marble Systems.....	167	The Lauren	1
Clark Hall Doors	47	Marc Fleisher, TTR, Sotheby's.....	199	The Residences - Lighthouse Cove.....	35
Closet Factory	53	Marin Hagen, Coldwell Banker	204	Theodores	10
Closets by Design.....	41	Marvin Windows.....	28	Tom & Cindy & Associates.....	203
Cochran Studios.....	54	McHale Landscape Design	4, 5; 74-77	Tri-State Stone	175
Davida's Kitchen & Tiles	179	Meridian Homes	187	TW Perry	63
Decksapes of VA, LLC	107	Michael Nash Design Build.....	8, 9	Walnut Hill Landscape Co.....	80, 81
Dominion Electric Supply Company.....	170	Monarch Design DC	42	Walpole Outdoors.....	110
Electronic Home Environments	166	Olarner Interiors	37	Wentworth Architects & Builders.....	181
Farrow & Ball	15	Outdoor Illumination.....	106	Wetherly & Karen Barker, Sotheby's TTR.....	201
Fine Earth Landscape	96, 97	Pat Stack, Weichert Realtors	194, 195	Wheat's Landscape	90, 91
GardenWise Co.	102	Poggenpohl.....	170	Windsor Windows & Doors	16
Green Front Furniture	45	Poliform	14	Wine Cellars by Lisa	35
GTM Architects.....	171	Porcelanosa.....	IBC	Zen Associates, Inc.....	110

Casey Margenau

— Over 2.7 Billion Sold — Fine Homes & Estates

Virginia's Leader in Luxury and International Real Estate Marketing For Over 25 years

View Casey's  Tours of These & Other Homes



KNOWLEDGE

EXPERIENCE

TRUST



11324 Fox Creek Farm Way, Great Falls, VA 22066 \$3,499,900

Custom brick & stone home built by **A&G Homes Inc.** w/ 3-stop elevator situated on a large level lot! Pool in backyard with outdoor fireplace, pavilion, outdoor kitchen, slate roof. Family room features stone fireplace, built-in entertainment system, and coffered ceilings. Master suite has tray ceilings, his and her WICs, body sprayers in shower. Lower level has spacious rec room, media room, bar



8611 Georgetown Pike, McLean
\$6,250,000



1031 Bellview Road, McLean
\$3,985,000



1344 Woodside Drive, McLean
\$3,200,000



1503 Woodacre Drive, McLean
\$2,295,900



7820 Swinks Mill Court, McLean
\$2,289,900



7004 Green Oak Drive, McLean
\$1,899,900



930 Seneca Road, Great Falls
\$1,999,999



2350 N. Daniel Street, Arlington
\$2,245,000



105 Poplar Lane, Occoquan
\$3,989,000



living history

The Washington Navy Yard's diminutive Watch Box has had a checkered past. First erected around 1840 as a sentry post for marines guarding the Latrobe Gate (above, right), it was replaced by a firehouse in 1909 and sent—minus its porch—down the Potomac via barge to Indian Head Naval Yard. It was thoroughly dilapidated by the time Naval Facilities Command contacted architecture firm EYP in 2014 with the idea of restoring and relocating it in the Navy Yard as an historic relic.

A small addition to the original structure was removed and lead paint scraped off the exterior before it made the return trip upriver (above, left) to the Southeast DC campus. The firehouse is still operational, so the 450-square-foot Watch Box was sited nearby.

Architect Matthew Chalifoux spearheaded a restoration effort that unfolded like a detective story. "The mandate was to make it look the way

it was in 1840," he says. "We were trying to recreate something that was gone, to understand changes to a building over time." Aided by old photographs and clues in the existing structure, the EYP team reconstructed the porch and patched the distinctive clapboard exterior with salvaged pieces of the discarded addition. Research determined that a brick floor—on the porch and inside—would have been accurate to the period, and decorative details and colors were drawn from similar period buildings.

A winner of two historic-preservation awards, the Watch Box (top) can be seen on visits to the Navy Yard's museum. usnavymuseum.org —Julie Sanders

RESTORATION ARCHITECTURE: MATTHEW CHALIFOUX, FAIA, Anthony Bochicchio, AIA, EYP, Washington, DC. GENERAL CONTRACTOR: Summit Construction Inc., Frederick, Maryland. TOP PHOTO: CHRIS SPIELMANN.

PORCELANOSA®

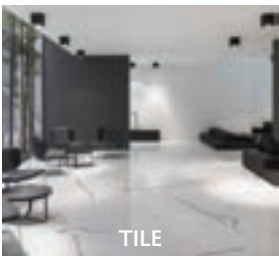
TILE / KITCHEN / BATH / HARDWOOD



WALL AND FLOOR TILE XLIGHT PREMIUM LUSH WHITE NATURE

BATHTUB UNIQUE

BATHTUB FILLER LOUNGE



TILE



MOSAICS



KITCHEN



BATH



HARDWOOD & LAMINATE

PORCELANOSA®
TILE / KITCHEN / BATH / HARDWOOD

info@porcelanosa-usa.com | www.porcelanosa-usa.com



Showroom:
11500 Rockville Pike, North Bethesda, MD 20852 | Phone: 240.290.1120

Showroom:
1000 Connecticut Avenue NW, Suite 100E, Washington DC 20036 | Phone: 202.204.1655

Outlet / Warehouse:
701 Dover Road Unit B, Rockville, MD 20850 | Phone: 301.294.8193

Dreaming of a new kitchen...



Knowledgeable People.
Professional Design.
Expert Installation.

Cabinets, countertops, appliances, flooring, lighting and the design expertise to do it right. Let us help you create a kitchen or bathroom that will bring your dream to life.

Reico
KITCHEN & BATH

www.reico.com

Visit one of our 22 showrooms located throughout Maryland, Virginia, North Carolina, Delaware and Pennsylvania

Annapolis, MD (410) 571-8400

Bethesda, MD (301) 654-6000

Chantilly, VA (703) 245-8950

Charlottesville, VA (434) 923-0400

Charlotte, NC (984) 222-6300 (Coming soon)

Chesapeake, VA (757) 564-4820

Elkridge, MD (410) 579-1774

Falls Church, VA (703) 748-0700

Frederick, MD (301) 631-0400

Fredericksburg, VA (540) 371-8005

King of Prussia, PA (610) 382-1137

Millsboro, DE (302) 223-9200

Raleigh, NC (919) 878-7744

Richmond, VA (804) 262-8389

Roanoke, VA (540) 375-6400

Southern Pines, NC (910) 693-0162

Springfield, VA (703) 914-4900

Timonium, MD (410) 776-2220

White Plains, MD (301) 638-0400

Williamsburg, VA (757) 564-4820

Wilmington, DE (302) 894-0400

Woodbridge, VA (703) 245-8900