

H&D HOME&DESIGN'S SOURCEBOOK

THE ULTIMATE GUIDE

*for luxury design
+ remodeling*

KITCHEN + BATH
LANDSCAPING
CUSTOM BUILDING
AND MORE!



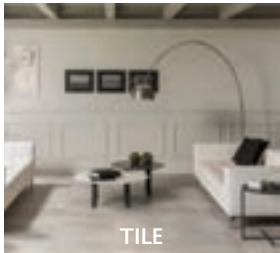
PORCELANOSA®

TILE / KITCHEN / BATH / HARDWOOD

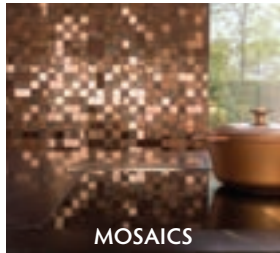


FLOOR TILE SEEDWOOD TANZANIA ALMOND
KITCHEN TROTTER E6.90 / ROBLE COBRE

With its high quality and beauty, Seedwood is a wood-look porcelain tile collection that evokes the true elements of natural hardwood. Seedwood is available in 11 different shades and has 4 complementary accent tiles. Visit your local Porcelanosa showroom for more information.



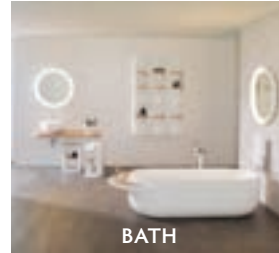
TILE



MOSAICS



KITCHEN



BATH



HARDWOOD & LAMINATE

PORCELANOSA®
TILE / KITCHEN / BATH / HARDWOOD

info@porcelanosa-usa.com | www.porcelanosa-usa.com



SHOWROOM:
11500 Rockville Pike, North Bethesda, MD 20852 | Phone: 240.290.1120

SHOWROOM:
1000 Connecticut Avenue NW, Suite 100E, Washington DC 20036 | Phone: 202.204.1655

OUTLET / WAREHOUSE:
701 Dover Road Unit B, Rockville, MD 20850 | Phone: 301.294.8193

Hickory Chair is a registered trademark of the Heritage Home Group, LLC family of brands. ©2017



DAVID PHOENIX
HICKORY CHAIR®
www.hickorychair.com/davidphoenix



MICHAEL-CLEARY

1099 14th St. NW . Suite 350
Washington, DC . 20005
michaelclearyllc.com

Available through the Michael-Cleary showroom

MORE POSSIBILITIES

UNFOLDING

BEFORE YOUR EYES.



There are times that you cherish; they deserve the perfect frame. Marvin windows and doors elevate every space to enhance the lives within. Made-to-order, with innovative design and industry-leading energy efficiency. For generations, we've honed our craft to create products you will enjoy for years to come.

FIND INSPIRATION AT YOUR LOCAL, INDEPENDENT MARVIN DEALER TODAY.

American Cedar & Millwork

2 Locations:
Baltimore - 410-832-3113
Millersville - 410-987-6800
Millwork1.com

Barrons

3 locations to serve you:
Gaithersburg, MD - 301-948-6600
Manassas, VA - 571-292-2900
Rockville, MD - 301-591-0600
BarronsLumber.com

**ClearView Window
& Door Company**

Parkville 410-668-1110
Cockeysville 410-771-0771
GetClearview.com

Forbes Design Center

1940 Greenspring Dr., Suite D
Timonium, MD
410-252-1009
ForbesDesignCenter.com

Hodges Windows & Doors

120 W Jefferson St.
Falls Church, VA
44190 Waxpool Rd., Suite 192
Ashburn, VA
703-532-0184
HodgesCompany.com

J.F. Johnson Lumber

2 Locations to serve you:
Edgewater - 410-956-0400
Millersville - 410-987-5200
JohnsonLumber.biz

Mid South Building Supply, Inc.

7940 Woodruff Court
Springfield, VA
703-321-8500
msbs.net

National Lumber

4901 Pulaski Hwy.
Baltimore, MD
443-573-0459
NationalLumber.biz

Old Town Windows and Doors

631 S Patrick St.
Alexandria, VA
703-838-2779
OldTownWindowsAndDoors.com

Otter Creek Millwork

10 S Greenway Ave.
Boyce, VA
540-837-9351
OtterCreekMillwork.com

Tart Lumber Company

22145 Shaw Rd.
Sterling, VA
703-450-5040
TartLumber.com

Warren's Wood Works, Inc.

8708 Brooks Dr.
Easton, MD
410-820-8984
WarrensWoodWorks.com

Window and Door Showplace

McLean - 703-506-3650
Sterling - 703-736-9600
WDSHowplace.com

MARVIN 
Windows and Doors

Built around you.®



Introducing

O'NEIL RUPPEL

Luxury Bath Furniture and Bespoke Faucetry

oneilruppel.com | Exclusively for Renaissance Tile & Bath

Visit our Alexandria Showroom

Renaissance Tile & Bath | 816 N. Fairfax Street, Alexandria, VA 22314.

RENAISSANCE

TILE
STONE
BATH

© 2017 Renaissance Tile and Bath.

1.800.275.1822

WWW.RENAISSANCETILEANDBATH.COM ATLANTA / CHARLOTTE / DALLAS / NASHVILLE / WASHINGTON DC



Kenzo Takada dresses the Mah Jong

Free spirited and audacious designer Kenzo Takada, known as "the most Parisian of Japanese fashion designers," has designed an exceptional collection of fabrics and ceramics for Roche Bobois. To dress the Mah Jong sofa, he drew inspiration from traditional kimonos of the Nō theater. He reinterpreted the motifs and colors, creating delicate and sophisticated harmonies that symbolize the three times of the day: *Asa* (morning), *Hiru* (noon), and *Yoru* (evening).

Photo: Michel Cibert, image for advertising purposes only. Special thanks: Stone Sculpture museum of the Kubach-Wilmsen Foundation. (Conditions apply, contact store for details. *Program available on select items, subject to availability.



Mah Jong. Modular sofa system, design Hans Hopfer.
Upholstered in Nō Gaku fabrics, Hiru version,
designed by **Kenzo Takada for Roche Bobois.**
Manufactured in Europe.

French Art de Vivre

rochebobois
PARIS

• Complimentary 3D Interior Design Service¹ • Quick Ship program available²

www.roche-bobois.com

CONTENTS



COVERS: WINTER: Heartbeat, a subtle flame-stitch pattern from York Wallcoverings, makes a striking backdrop to any décor. SPRING: In a chic McLean playroom by Kristin Peake Interiors, colorful chairs by Drexel surround a center ottoman. Photo by Stacy Zarin Goldberg. SUMMER: Katia Goffin Gardens designed a clean-lined, contemporary landscape in Oakton, Virginia. Photo by Roger Foley. ABOVE: Textured woven fabrics in the Alston collection by Romo.

- 10 **ROOMS WE LOVE**
Five fabulous spaces marry elegance and innovation in design.
- 20 **IN LIVING COLOR**
ColePrévost imbues a traditional home with bright hues and a playful attitude.
- 24 **DESIGNERS' CHOICE AWARDS**
Our 2018 survey spotlights the area's top architects, designers, showrooms and more.
- 30 **GRAND OPENINGS**
A roundup of the region's newest home-furnishings and design destinations.
- 192 **A YEAR IN DESIGN**
Save the dates for art and design events not to be missed.

8 easy-to-use sections reveal the best in luxury design and fine interiors

32 **ARCHITECTURE + CUSTOM BUILDING**

54 **AUDIO/VIDEO + LIGHTING**

68 **CLOSETS + ORGANIZED SPACES**

78 **FLOORS + WINDOWS + DOORS**

96 **INTERIOR DESIGN**

126 **KITCHEN + BATH**

152 **LANDSCAPING + OUTDOOR LIVING**

174 **REMODELING**

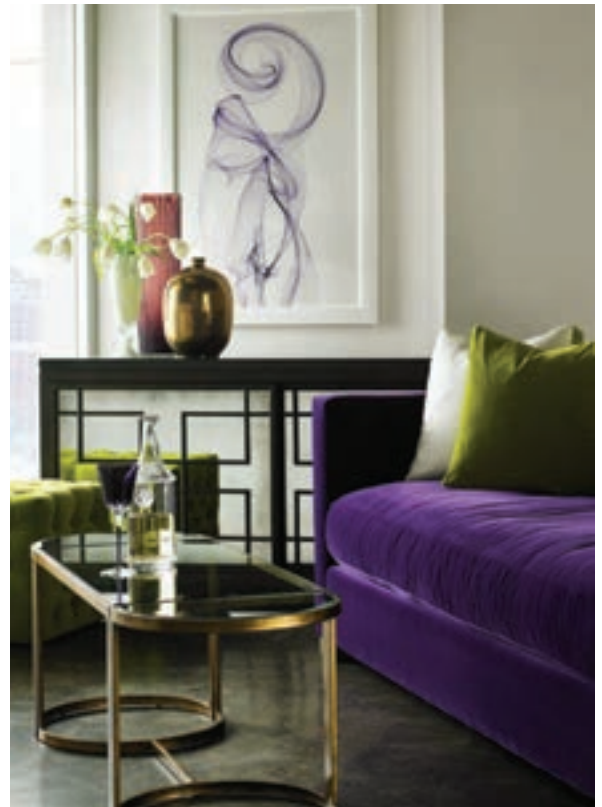


SHEFFIELD
FURNITURE & INTERIORS

At Sheffield Furniture & Interiors, Washington's number one choice for upscale furniture, you will discover everything you need to bring your dream interior to life: the best brands and styles, along with talented interior designers who will help you pull everything together. Visit us at one of our showrooms or at SheffieldFurniture.com.



Washington's
No. 1 CHOICE
FOR UPSCALE FURNITURE



SHEFFIELD
FURNITURE & INTERIORS

Wonderfully Livable

H&D SOURCEBOOK

Home&Design's

PUBLISHER **Tod Herbers**

EDITOR IN CHIEF **Sharon Jaffe Dan**

EDITOR **Julie Sanders**

ART DIRECTOR **Rebecca K. McClimans**

PRODUCTION DIRECTOR **Jean Crispens-Williams**

DESIGNER **Nelson Sayson**

OPERATIONS MANAGER **Jerry Parks**

DIRECTOR OF NEW MEDIA **Devin Herbers**

MANAGER, SPECIAL PROJECTS **Donna Taurman**

OFFICE MANAGER / MARKETING ASST. **Cindy Rubio**

INTERNS **Julia Heimlich, Shelby Jordan**

DIRECTOR OF SALES & MARKETING **Martha Campion**

ADVERTISING MANAGER - DC **Monica West Porter**

SENIOR ACCOUNT MANAGER **Mechelle Clements**

SENIOR ACCOUNT MANAGER **Charlotte DeFuria**

NEWSSTAND DISTRIBUTION BY



Copyright 2017 Washington Maryland Virginia HOME & DESIGN® (ISSN 1551-0247) Sourcebook 2018, volume nineteen. Washington Maryland Virginia HOME & DESIGN is published bi-monthly by Homestyles Media Inc, 451 Hungerford Drive, Suite 350, Rockville, MD 20850. Subscriptions: US subscriptions one year (6 issues) \$19.95; two years (12 issues) \$29.95. Canadian subscribers add \$110; other non-US subscribers add \$160. Single copies \$5.95 plus postage. POSTMASTER: Send address changes to HOME & DESIGN, P.O. Box 301, Congers, NY 10920-0301 USA. For advertising and editorial information, call 240-328-6275. All rights reserved. No part of this periodical may be reproduced without written permission. Neither the Publisher nor the Advertisers will be held responsible for any error found in the magazine, nor does the Publisher accept any. The Publisher accepts no liability for the accuracy of statements made by Advertisers. The Publisher is not responsible nor assumes any liability for omissions or errors in the table of contents or directories. This is not intended as an offer where prohibited by state laws. All prices and finance claims appearing in this magazine are subject to change without prior notice. All real estate advertised in this magazine is subject to the Federal Fair Housing Act, which makes it illegal to advertise "any preference, limitation, or discrimination because of color, religion, sex, handicap, familial status, or national origin." This company will not knowingly accept any advertisement for real estate which is in violation of the law. All persons are hereby informed that all dwellings advertised are available on an equal opportunity basis.



Advertising Information
240-328-6275

Subscription Information
866-691-6115

www.HomeandDesign.com



Nature. Refined.

 caesarstone®

The beauty of nature, the quality of Caesarstone
Montblanc 5043
www.caesarstoneus.com



ROOMS *we love*



A mélange of antiques and modern pieces graced Frank Babb Randolph's Georgetown living room



The son of Congressman Jennings Randolph, Frank Babb Randolph grew up in an era when he could jump on a street-car and explore Washington's treasures alone. "I haunted the National Gallery," he recalls, "and had the opportunity to see some of the best houses in Georgetown."

Decades later, the seasoned designer would express his classicist eye in the design of his own 1959 Georgetown residence. Though he loved the generous proportions of its living room, Randolph "enhanced the woodwork and added tall windows and a center window like Jefferson did at Monticello," he explains.

Pale gray walls and a muted Odegard carpet created a serene backdrop for a collected-over-time mix of antiques, accessories and modern pieces of Randolph's design, including a banquette sofa that will be part of a forthcoming collection for David Iatesta. A 19th-century Zuber screen made a bold statement behind the seating arrangement, which Randolph kept "*mobilier*," so pieces such as the antique French center table could be moved around as company enjoyed the space.

On one wall, a Niermann Weeks console was flanked by Louis XV chairs covered in eye-catching coral fabric. Niermann Weeks sconces and a David Iatesta mirror hung above.

Randolph, who moved to Kalorama in spring 2017, reminisces about his former living room. "People who visited would say 'I'd live in this room all the time if I were you.' Well, I did. It made an impact, despite its subtlety."

Interior Design: Frank Babb Randolph, Frank Babb Randolph Interiors, Washington, DC. Photography: Max Kim-Bee.



Designer Sallie Finney Kjos enlivens a traditional dining room with a crisp palette and clean-lined furnishings

When updating a dining room in historic Leesburg, Virginia, Sallie Kjos enhanced the old while embracing the new. Traditional architectural features, such as paneled wainscoting and dentil molding, provided a complementary backdrop to the homeowner’s antique china collection—including a blue-and-white set from the 1850s that inspired the color scheme.

Under Kjos’s direction, the dining room was painted in high-contrast navy and white, softened by rich creams and spa blues exemplified in a washed rug from Surya.

“The style is transitional,” explains Kjos. “I took the traditional look and gave it sharper edges with furniture that was cleaner-lined and more contemporary.”

Twin, glass-fronted Chippendale-style china cabinets with honeycomb trellis overlays were sourced at Z Gallerie. Painted white, they are classic yet crisp and fresh, adding symmetry to the room while showcasing the homeowner’s beloved collection of Chinoiserie.



Meanwhile, the traditional, dark-stained mahogany dining table from Ballard Designs, which seats up to 12 with added leaves, lends strong visual weight to the room. To counter its mass, Kjos selected a mix of seating, also from Ballard: open-backed chairs with velvet seats and host and hostess armchairs upholstered in a light-colored herringbone pattern.

A curvaceous Kichler chandelier hangs above the table, while a sleek, brass-and-glass Pottery Barn console holds serving pieces and dessertware as needed. A modern sunburst mirror in gold from Z Gallerie is striking against the walls painted in Naval from Sherwin Williams.

“As a designer, I like the mix of an eclectic, layered look,” Kjos reflects. “It’s more interesting when things are collected over time.”

*Interior Design: Sallie Finney Kjos, GreyHunt Interiors, South Riding, Virginia.
Text & Styling: Charlotte Safavi. Photography: Stacy Zarin Goldberg.*







Old World charm meets modern convenience in a McLean kitchen

A McLean family tapped architect Mark Sullenberger to design a home that would blend an Old World aesthetic with their modern lifestyle. Builder Patrick Latessa collaborated with designer Kristin Peake to bring the design to life—including a kitchen that beautifully reflects that special blend of old and new.

Latessa added charm and character by embellishing the vaulted ceiling above the kitchen and the dome over the breakfast area with salvaged-oak beams. “They are hand-hewn, rough-cut wood with a rustic sensibility,” observes Peake. “They connect the two areas of the kitchen visually.” The floor, made of reclaimed antique limestone sourced from France, contributes to the Old World feel.

Peake worked with Lobkovich Kitchens to select custom white cabinetry and a massive furniture-style island. Counters are of Calacatta marble hand-selected at a quarry in Italy, and a Visual Comfort chandelier made of distressed wood and iron hangs above the island. “It’s elegant without being ostentatious,” Peake explains. “And it’s huge, to complement the island.”

In the octagonal breakfast area, chairs from JANUS et Cie with indoor/outdoor fabric and a custom banquette pull up to a Lillian August table made of wood and metal. A carved-wood chandelier from Currey & Company matches the light-hued furniture.

The wife stressed the importance of hiding clutter, so Latessa created a walk-in pantry for additional storage. Sub-Zero refrigerators, flanking a Rohl sink beneath the window, are paneled, while the Wolf range is paired with a paneled hood to match the cabinets. An adjoining mudroom even keeps the pets’ clutter at bay: Custom cabinets conceal a cat litter box as well as the dog’s water and food bowls.

Architecture: Mark R. Sullenberger, AIA, Custom Design Concepts, McLean, Virginia. Interior Design: Kristin Peake, Kristin Peake Interiors, LLC, Rockville, Maryland. Kitchen Design: J. Paul Lobkovich, Lobkovich Kitchen Designs, Tysons Corner, Virginia. Builder: Patrick Latessa, The Galileo Group, McLean, Virginia. Photography: Geoffrey Hodgdon.





Erika Bonnell imbues a romantic master bedroom with soft femininity and a touch of glamour

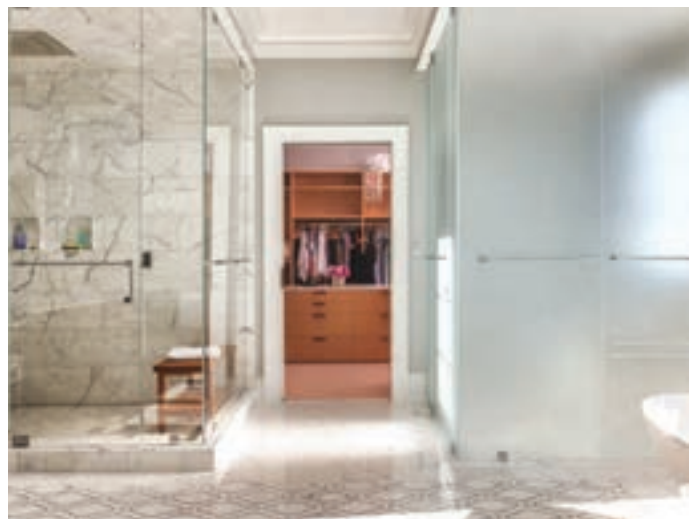
When designer Erika Bonnell was enlisted to overhaul the interiors of an Oakton, Virginia, home, her task included very specific instructions for the master bedroom. “The wife is obsessed with Lisa Vanderpump,” Bonnell recounts. She wanted a bedroom in the style of “Real Housewives of Beverly Hills”—one that would exude femininity and romance. Fortunately, the husband was on board with this directive. “He just wanted function and comfort,” observes the designer.

Bonnell started out by researching the popular TV personality’s home. At her client’s request, she selected soft rose for the walls—a Benjamin Moore hue called Pleasant Pink. A plush wall-to-wall carpet in pale gray serves as a neutral foil, while a shiny silver-leaf treatment by Twin Diamond Studios on the tray ceiling contributes a touch of glam.

Throughout the room, Bonnell employed mirrored surfaces, crystal pieces and soft, billowy fabrics in creamy white and light gray. A tufted Vanguard bedstead upholstered in white Kravet velvet sets the stage, with bedding by Matouk. At the foot of the bed, a Hickory Chair bench covered in Kravet fabric gives off a subtle sheen. Twin John-Richard nightstands with mirrored fronts hold Bradburn Gallery table lamps with pink ceramic bases. Above, a brass-and-crystal chandelier by Visual Comfort makes a grand statement.

A seating alcove, which opens out to a balcony, holds a pair of elegant armchairs from Oly drawn up to a Worlds Away coffee table. Existing built-ins painted lustrous white are adorned with decorative items and flank an inviting window seat. A busy mother of young kids, the wife “wanted an escape,” Bonnell notes. “She asked for a space where she could go in and close the door, that would make her feel special and glamorous. So that’s what we gave her.”

Interior Design: Erika Bonnell, Erika Bonnell Interiors, Haymarket, Virginia.
Photography: Stacy Zarin Goldberg.



An idyllic river vista enhances a sumptuous master bath combining timeless materials with contemporary flair

A couple building a custom home on the James River in Williamsburg enlisted Atlanta-based kitchen-and-bath designer Shirley McFarlane, who had worked with them on previous projects, to collaborate on their sprawling new riverfront abode—which would include a luxurious master-bath retreat boasting a stunning river view.

“We spent a year in the planning stages,” McFarlane recounts. “They had a very strong vision for the space.” At the top of the owners’ extensive wish list was contemporary hanging cabinetry with clean, spare lines; a sculptural statement tub sited in front of a window wall with the expansive water view beyond; and a light, airy feel.

“It was a fun challenge to figure out how to make the space work,” says McFarlane, who designed glass enclosures for the shower and WC that enhance the sense of openness in the space. A passageway between the enclosures leads to the closet. For the sake of privacy, the glass surrounding the WC is frosted.

Cabinetry from Premier Custom Built is made of fumed, quartered eucalyptus wood with a high-gloss, exotic-wood veneer. It flanks the door to the bedroom, with open shelving and storage on one side and his-and-her sinks and a makeup table on the other.

Classic Calacatta Gold marble tile was used on the floors and in the shower to soften the bathroom’s contemporary lines. A mosaic pattern from New Ravenna on the floor mimics an area rug, while heavily veined marble distinguishes the shower enclosure. Calacatta Manhattan marble tops the cabinet surfaces.

Sinks by Lacava and a Victoria & Albert soaking tub are paired with sleek Dornbracht faucets. Sconces by Hudson Valley Lighting provide a transitional touch. ❖

Architectural Design: Carroll W. Johnson, Residential Designs, Ltd., Chesapeake, Virginia. Bath Design: Shirley McFarlane, CKD, McFarlane Design, Inc., Atlanta, Georgia. Builder: Butch Palmer, Palmer & Co., Williamsburg, Virginia. Photography: Tony Giammarino.



In the living room (these pages), a wall of built-in bookshelves is accented in hot pink. Herman Miller poufs on the Roche Bobois rug provide extra seating and punches of color. A Biedermeier bench in front of a wall covered in dried moss is a light-hearted allusion to an outdoor seat. The room is furnished with custom sofas, a traditional chair updated with hot-pink dotted fabric and coffee tables by Zeitraum.



A classic center-hall colonial turned out to be the perfect canvas for a surprising color palette and a fresh, new look. After buying the traditional DC house, a young couple turned to designer Sophie Prévost to give it some pizzazz in the form of vibrant hues, eco-friendly furniture and finishes, and a playful, whimsical vibe.

The husband “wanted color—I mean really bold,” Prévost recalls, laughing. “His choices were fun and unusual.”

The trick, the designer discovered, would be in conveying a sense of calm and serenity in spite of bright hues that are generally energizing rather than restful. “Our approach was to use large swaths of color on the walls,” she explains. “That way you can rest your eye on one color plane at a time and then move on from it. We used the furniture and rugs for pattern and texture.”

Prévost started in the front hall, where Sherwin Williams Bitter Chocolate provides a deep, neutral foil for the strong hues to come. “The brown tone complements the walnut furniture in the other rooms, too,” the designer notes.

A Roche Bobois rug with an abstract motif in shades of green created a departure point for the living room’s color scheme. According to her client’s wishes, Prévost combined walls in Benjamin Moore’s Mystical Grape with crisp, contrasting white

Interior Design: Sophie Prévost, ASID, ColePrévost, Washington, DC.





in living
COLOR

ColePrévost awakens a traditional DC home with bold hues and a sense of fun

BY JULIE SANDERS

PHOTOGRAPHY BY ANGIE SECKINGER



Prévost kept the dining room (these pages) spare, relying on a hand-woven Nepalese rug from Timothy Paul Home to provide pattern. The orange walls create the backdrop for a custom, live-edge table, Thos. Moser chairs and a sideboard Prévost designed for the room. Bold art and animal photography keep the mood light.



trim. A hot-pink shade, Benjamin Moore's Pre-dawn Sky, adorns the insides of the built-in bookshelves—the result of a debate between the designer and her client, who originally wanted that color everywhere but settled for using it more sparingly.

"I had to insist that the hot pink was too much for the whole room," Prévost recalls, amused. She and her team designed the custom, pale-green sofas to ensure that they were fabricated entirely with eco-friendly materials, which was important to the owners. Pink and purple pillows and poufs by Herman Miller add cohesiveness.

At New York's International Contemporary Furniture Fair, Prévost came across a wall made of freeze-dried natural reindeer moss by Polarmoss, a Finnish company. She showed it to her clients, who embraced the quirky material, which spoke to their

love of nature—and fun. Prévost covered a wall in it, now fronted by a Biedermeier bench as a whimsical nod to an outdoor seat. She punctuated the moss surface with Ingo Maurer light fixtures that look like fluttering birds.

In the dining room, Prévost suggested the walls and decorative moldings be painted in one strong hue—Sherwin Williams's Marquis Orange—to keep the space from looking busy. She designed the multi-colored sideboard with that saturated shade in mind, and introduced a strong pattern in a Nepalese rug from Timothy Paul. A playful suspension light by Belux "looks like a big, fat cloud over the table," Prévost says. She designed the live-edge table, and selected airy, open-backed chairs by Thos. Moser. The owners' photographs and paintings, which mostly depict animals, add to the home's lighthearted sensibility. ❖





Designed by Patrick Sutton, an elegant dining room in Baltimore brings the outdoors in. © Gordon Beall.

designers' **CHOICE** **awards**

*H&D's 2018 survey of area
designers and architects*

Each year, *Home & Design* polls hundreds of area professionals regarding their picks for leaders in the innovative, ever-evolving home-design industry—and requests their votes of confidence in rising stars on the local scene. We also ask architects and designers to choose their favorite industry resources, in categories ranging from audio/video and appliance showrooms to lighting dealers and art galleries. The following pages cover the complete survey results for 2018.





Kube's Richard Loosle-Ortega and Janet Bloomberg designed a modern home in Cleveland Park. © Greg Powers.



A pool scape by Walnut Hill's Michael Prokopchak fronts the Chesapeake Bay. © Michael Prokopchak.

HALL of fame

ARCHITECTS

**Janet Bloomberg, AIA,
Richard Loosle-Ortega, RA**

Kube Architecture

Washington, DC; kube-arch.com

INTERIOR DESIGNER

Patrick Sutton

Patrick Sutton

Baltimore, Maryland; patricksutton.com

LANDSCAPE ARCHITECT

Michael Prokopchak, ASLA

Walnut Hill Landscape Company

Annapolis, Maryland;

walnuthilllandscape.com



A home by Mark Sullenberger, Custom Design Concepts. ©Thomas Walker.



A Northwest DC renovation by Neal Thomson and Patrick Cooke. © Anice Hoachlander.

ARCHITECTURE FIRM

this award category was a tie between

Mark Sullenberger, AIA

Custom Design Concepts

Architecture + Design

McLean, Virginia; cdcarch.com *and*

Neal Thomson, AIA,

Patrick Cooke, AIA,

Thomson & Cooke Architects

Washington, DC; thomsoncooke.com

UP & COMING ARCHITECT

Jon Hensley, AIA, LEED AP

Jon Hensley Architects, Arlington,

Virginia; jonhensleyarchitects.com



A glass-walled Arlington addition designed by Jon Hensley. © Morgan Howarth.

UP & COMING

INTERIOR DESIGNER

Quintece Hill-Mattauszek

Studio Q, Alexandria, Virginia;

studioqdesigns.com



LANDSCAPE FIRM

McHale Landscape Design

Upper Marlboro, Maryland;

mchalelandscape.com

KITCHEN DESIGN FIRM

Lobkovich Kitchen Designs

Tysons Corner, Virginia; lobkovich.com



Quintece Hill-Mattauszek enlivened a basement in Bowie, Maryland. © Maryland Photography, Inc.



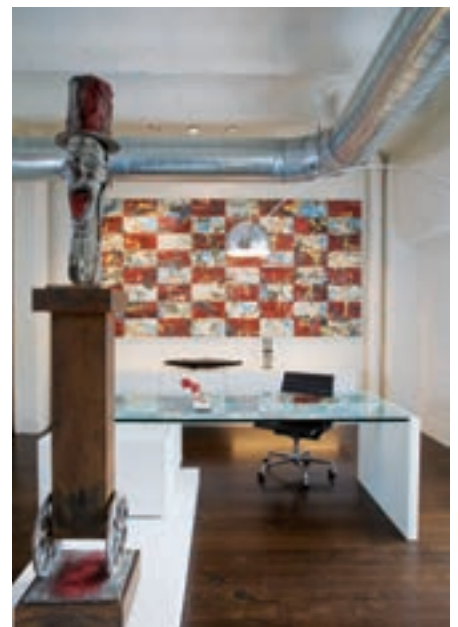
A lush pool scape in Bethesda by McHale Landscape Design. © John Spaulding.



A computer rendering of a McLean kitchen by Lobkovich Kitchen Designs.



Thorsen Construction renovated a Northwest DC home in classic style. © Anice Hoachlander.



A 14th Street loft with millwork by Potomac Woodwork. © Geoffrey Hodgdon.



A Great Falls renovation by BOWA encompassed an addition and new outdoor living spaces. © BTW Images.

CUSTOM BUILDER

Thorsen Construction
Alexandria and Warrenton;
thorsenconstruction.us

DESIGN/BUILD FIRM

BOWA
McLean and Middleburg; bowa.com

CRAFTSMAN

Potomac Woodwork, LLC
Gaithersburg, Maryland;
potomacwoodwork.com



Closet Factory



Stark Carpet



Torpedo Factory



Schumacher



Architectural Ceramics



Roche Bobois

Industry Awards

ART RESOURCE
Torpedo Factory Art Center
 Alexandria, Virginia; torpedofactory.org

CARPET
Stark, Washington, DC;
starkcarpet.com

CUSTOM CLOSETS
California Closets
 Area locations; californiaclosets.com

DECORATIVE ACCESSORIES
Gretchen Everett
 Silver Spring, Maryland;
gretcheneverett.com

FABRICS & WALL COVERINGS
Schumacher, Washington, DC;
fschumacher.com

FINE FURNITURE
Roche Bobois, Washington, DC;
roche-bobois.com

HOME TECHNOLOGY
A.B.E. Networks
 Silver Spring, Maryland;
abenetworks.com

KITCHEN/BATH APPLIANCES & FIXTURES
Ferguson
 Area locations; ferguson.com

LIGHTING
Circa Lighting, Washington, DC;
circaighting.com

TILE & FLOORING
Architectural Ceramics
 Area locations;
architecturalceramics.com ❖



Ferguson



Gretchen Everett



A.B.E. Networks



Circa Lighting



Showroom debuts on the home front throughout the Metro area

GRAND *openings*

BY KAREN A. WATKINS

ARCHITECTURAL CERAMICS, the upscale tile emporium, moved its Falls Church location to Vienna in February 2017. The Rockville-based company lures designers and contractors with more than 40 brands of tile in ceramic, glass, cement, stone and more. There are three outposts in Maryland and one in Virginia. 172 Maple Avenue West, Vienna, Virginia; architecturalceramics.com

CALLIGARIS will introduce its contemporary furnishings, lighting and accessories to the Tysons Corner area via a new, 5,000-square-foot showroom opening in Tysons Galleria in fall 2017. The Italian furniture brand specializes in space-saving, custom-sized furniture, and offers in-home design services. 2001 International Drive, McLean, Virginia; calligaris.us



Clockwise from top: A colorful assortment of chairs at Design Within Reach; a nook displaying items at Pillar & Post; the welcoming entrance to Home on Cameron.



CLOSET FACTORY brought its made-to-order closet systems to a new location in Vienna in October 2016. The 2,000-square-foot space showcases storage solutions in different finishes and styles to keep every room, from pantry to garage, artfully organized. 8500 Leesburg Pike, Suite 103, Vienna, Virginia; closetfactory.com

DESIGN WITHIN REACH moved from its former Cady's Alley spot to a larger one in the same complex. Modernists will love designs by up-and-comers, as well as classics by Saarinen, Eames and Le Corbusier. Opened in fall 2016, the 10,000-square-foot showroom boasts 20 room displays and a Chilewich boutique. 3338 M Street, NW, Washington, DC; dwr.com

GERMAN KITCHEN CENTER—based in Brooklyn—opened in Georgetown in July 2017. The showroom offers Leicht and Nobilia cabinetry, which represent top-of-the-line German design and efficiency and come in a range of price points. 1010 Wisconsin Avenue, NW, Washington, DC, Suite 200; germankitchencenter.com

HOME ESCAPES AND THE NEW OFFENBACHERS is the reimaged moniker for Offenbachers, which shuttered its locations last year but got a rebirth in spring 2017 when Home Escapes bought the ailing company. In its new Rockville location, the showroom sells outdoor furniture, fire pits and home spas. 5528 Nicholson Lane, Rockville, Maryland; homeescapes.com

HOME ON CAMERON, the brainchild of designers Todd Martz and Susan Nelson, opened in Old Town Alexandria in spring 2017. Vintage furniture, works by local craftsmen and unique finds are showcased with draperies, accessories and art. Customized pieces are also on offer—as is advice from the design-savvy owners. 315 Cameron Street, Alexandria, Virginia; homeoncameron.com

PILLAR & POST opened in June 2017 in a Georgetown row house. Conceived by owner Daphna Peled—former DC lobbyist and lover of all things British—the 2,500-square-foot shop offers English antiques, contemporary art and lighting and niche British brands. 1647 Wisconsin Avenue, NW; pillarandpost.com

POLIFORM | SAGARTSTUDIO opened in an 1892 Georgetown row house in August 2017. Owners Vincent and Helena Sagart juxtapose Poliform and Varenna cabinetry with contemporary furnishings and lighting, illustrated in room vignettes throughout the 2,400-square-foot building. 2611 P Street, NW, Washington, DC; poliformdc.com

SALT & SUNDRY needed more room for its colorful assortment of home goods, bar ware and edibles in late 2016, so owner Amanda McClements moved it around the corner to 14th Street, then opened a sister shop, **LITTLE LEAF**, proffering succulents, houseplants and paper goods, in the old location. Salt & Sundry, 1625 14th Street, NW; shopsaltandsundry.com. Little Leaf, 1401 S Street, NW, Washington, DC; littleleafshop.com ❖



Creating Homes for today's living

703.757.0036 | jamesmcdonaldarchitects.com



architecture + custom building

Clean-Lined Classic



Homeowners with a cramped, dated abode hired Broadhurst Architects to redesign the kitchen and add on a third floor to accommodate visiting family members. They also requested an exterior makeover so the home would blend in with its upscale, traditional neighborhood.



THEN

The kitchen was too small and needed an overhaul. There was no side entry from the driveway, making it inconvenient to bring in groceries, etc.

The squat, gambrel roofline stuck out in a neighborhood of classic, colonial-style homes.

A nondescript front entry and dull brick façade meant the house had no street presence.

NOW

An attractive addition enlarged the kitchen and created a side entry. It conveys the impression of an existing porch that was later enclosed—similar to other houses in the neighborhood.

A third-floor addition replaced the dated roof. The new, gabled roofline harmonizes with its setting.

A front portico provides a commanding entry to the brick-and-clapboard home, which has been uniformly painted white with traditional dark-green shutters.

Renovation Architecture: Jeffery Broadhurst, AIA, Broadhurst Architects, Rockville, Maryland. Builder: O'Neill Development, Gaithersburg, Maryland. Photography: Anice Hoachlander.

ENDURING *vision*
ENDURING *craftsmanship*
ENDURING *relationships*



PYRAMID  BUILDERS

410.571.7707

www.pyramid-builders.com

Alt Breeding Schwarz Architects | Champion Hruby Landscape Architects | Walnut Hill Landscape Company

Modern Magic

A contemporary home complements its traditional Cleveland Park neighborhood

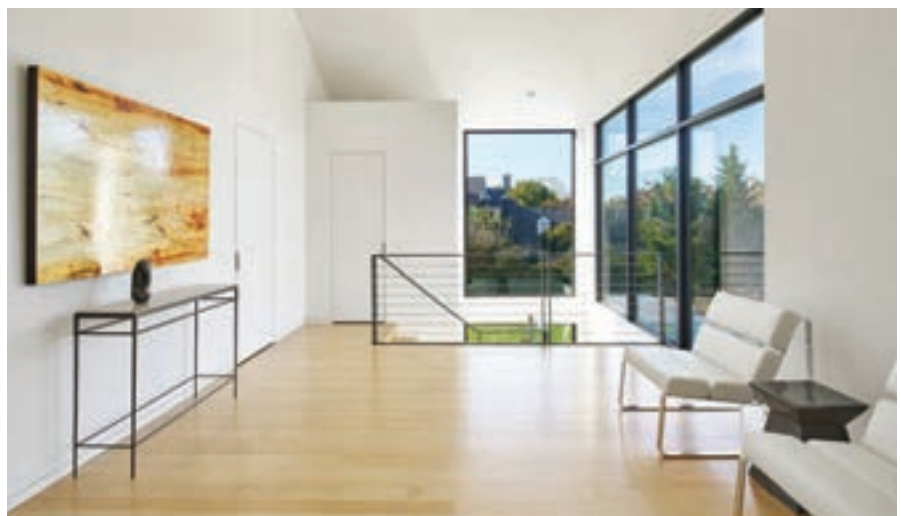
The challenge of designing a contemporary-style home in DC's Cleveland Park led Kube Architecture to create what the firm calls a "modern barn." The four-bedroom abode is divided into two offset pavilions topped by pitched roofs that echo the rooflines of the surrounding, traditional homes. Yet the pared-down architecture—stucco walls accented with Italian composite paneling and large, metal windows—achieves a contemporary flair unusual for the neighborhood.

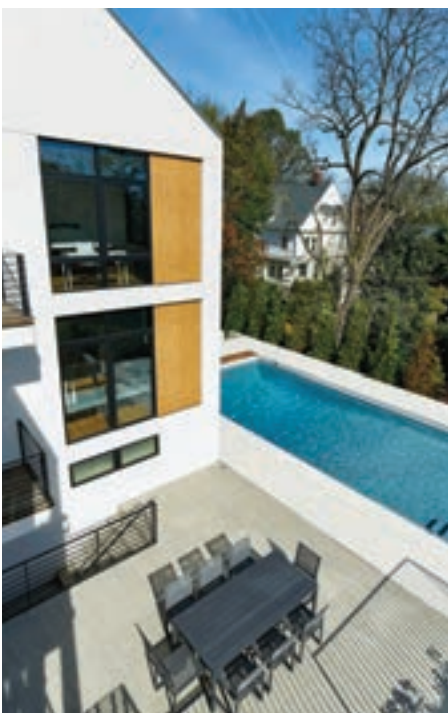
Inside, the residence is fitted with practical touches, including sliding doors that separate the home office into two work spaces and a shaft for a future elevator. "The owners wanted the house to feel livable, not formal or overdesigned," says Kube principal Janet Bloomberg.

The entrance pavilion contains an open-plan living/dining area and kitchen on the ground floor, and a master suite with a vaulted ceiling on the second level. The adjacent wing incorporates a mudroom, powder room and home office on the main floor, with upper-level bedrooms for the owners' two children and guests. The basement is every kid's dream: a two-story sport court for playing basketball, racquetball and squash.

Warm maple floors lighten the rooms, as do expansive panes of glass that capture views of Washington National Cathedral. Windows located at the ends of the hallways open out to balconies. They overlook a landscape designed by Champion Hruby that features an inviting terrace and swimming pool, nestled at the juncture of the pavilions.

Architecture: Janet Bloomberg, AIA, principal; Andrew Baldwin, design associate, Kube Architecture, Washington, DC. Builder: ThinkMakeBuild, Washington, DC. Landscape Architecture: Champion Hruby Landscape Architects, Annapolis, Maryland. Text: Deborah K. Dietsch. Photography: Greg Powers.





JANET BLOOMBERG'S TRADE SECRETS

- Sliding doors within a room will divide it for separate uses and allow flexibility.
- Stair landings and hallways should be sized generously; they may also function as dens or play areas.
- In an open-plan kitchen, furniture-like components will help the space blend with other areas. Varying wood, metal and composite materials with shiny and matte finishes will add visual richness.
- Windows strategically placed at the ends of hallways and in living areas will draw the eye to the views.
- For aging in place, consider building a shaft that will provide closet space now while allowing for the addition of an elevator later.

Door Prize *an array of inviting entries*



1



2



3



4



5



6



7



8



9

1/ 49920. Douglas fir; from \$1,500. simpsondoor.com **2/** Smooth-Pro. Fiberglass, single panel with half lite; \$923. jeld-wen.com **3/** Mahogany Pivot Door. Custom with sidelite and steel-reinforced core; \$10,500. pivotdoorcompany.com **4/** Mahogany 14 Lite TDL Doors. Custom with sidelites and transom; \$15,400. doorsbydecora.net **5/** Radius Top. Western red cedar; \$7,000. designerdoors.com **6/** Architect Series Entry Door. Fiberglass in Early American stain; from \$2,575. pella.com **7/** Pulse. Fiberglass and low-E glass; \$1,541. thermatru.com **8/** Smooth Fiberglass Entry Door. Polyurethane foam core, decorative glass; \$4,300. clopaydoor.com **9/** Straightline Mahogany, rectangular glass panel with sidelites and arched transom; from \$2,000. andersenwindows.com



Photography by John Cole



ANTHONY WILDER

ARCHITECTURE | INTERIORS | CONSTRUCTION

301 907 0100 | ANTHONYWILDER.COM

"MBIA - CUSTOM HOME GOLD AWARD WINNER!"



7735 OLD GEORGETOWN ROAD, SUITE 700 BETHESDA, MARYLAND
WWW.GTMARCHITECTS.COM
240.333.2000

ARCHITECTURE - INTERIORS - CONSTRUCTION



©Maxwell MacKenzie 2017



RANDALL J.
KIPP
ARCHITECTURE

www.kipparchitecture.com

81 King Carter Drive Irvington, VA 22480

804.438.6287

Lynbrook



*Kimmel Studio, LLC
Lynbrook of Annapolis
Pete Albert Photography*

Award-Winning Craftsmanship

FINE RESIDENTIAL CONSTRUCTION

410-295-3313
www.lynbrookofannapolis.com

Planning Stage



A sprawling custom home in Great Falls by the Gulick Group emphasizes outdoor living with a pool, hot tub, outdoor kitchen and expansive patio space. Photo by Judy Davis.

What should I look for when choosing an architect?

Your architect should inspire trust, possess strong ethics and creative problem-solving skills, and be humble enough to really listen. Examine portfolios and design styles for craftsmanship and detail; a good architect-designed project should stand out.

Make sure your architect is someone with whom you can communicate. Find out how your architect handles the design process and determines project costs. A good architect will stay involved to ensure the project is built to specifications. While the architect and builder should be separate companies, I recommend choosing people who work together often.

Finally, your architect should

be a creative designer, while also having a good technical and working understanding of construction, and relationships with those actually swinging the hammer. —*Seth Ballard, AIA, NCARB, Ballard + Mensua Architecture*

How have trends in custom-home design changed over the last 10 years?

Over the past decade, we've seen a trend towards a transitional or even contemporary aesthetic, with larger windows and cleaner lines, trim and cabinet profiles. Total home size has trended down slightly, as buyers prefer to spend their money on dramatic or unique finishes that express their personal style. There's been an increased interest in indoor/outdoor living spaces, with

lanais, outdoor fireplaces and fire pits, and multi-level decks with patios beneath.

The economic uncertainty of the last 10 years has resulted in fewer designed-from-scratch homes and increased interest in our "build on your lot" portfolio program. It allows clients to personalize our home plans, from adding rooms to raising ceilings and moving foundation walls, then choose from seemingly infinite finishes available from our suppliers.

—*Jamie Gulick, Gulick Group*

Why does working with an architect make financial sense?

Building a new custom home is the largest financial investment you'll make, so it makes sense to do it under the guidance of a professional. The architect's role is vital for many

reasons. Architects add value through the design of beautiful street façades that enhance the home's curb appeal. They ensure that a residence will fit seamlessly into the property's topography, respecting existing mature trees on the lot as well as neighboring homes.

Architects bring knowledge, training and experience to the job. An architect-designed floor plan will accomplish several important goals: to customize spaces so they maximize daily family functionality; to enhance sunlight and views; to create privacy as needed; and to provide energy efficiency that can save homeowners thousands of dollars. Lastly, the architect is the homeowner's advocate throughout the entire journey. —*Mark L. Giarraputo, AIA, Studio Z Design Concepts, LLC*



ARCHITECTS
+ BUILDERS



MODERN VACATION STYLE LIVING™



AVARCHITECTSBUILD.COM

CUSTOM HOMES

MAJOR RENOVATIONS

703.865.5065

Building Blocks



MINIMALIST MAGIC

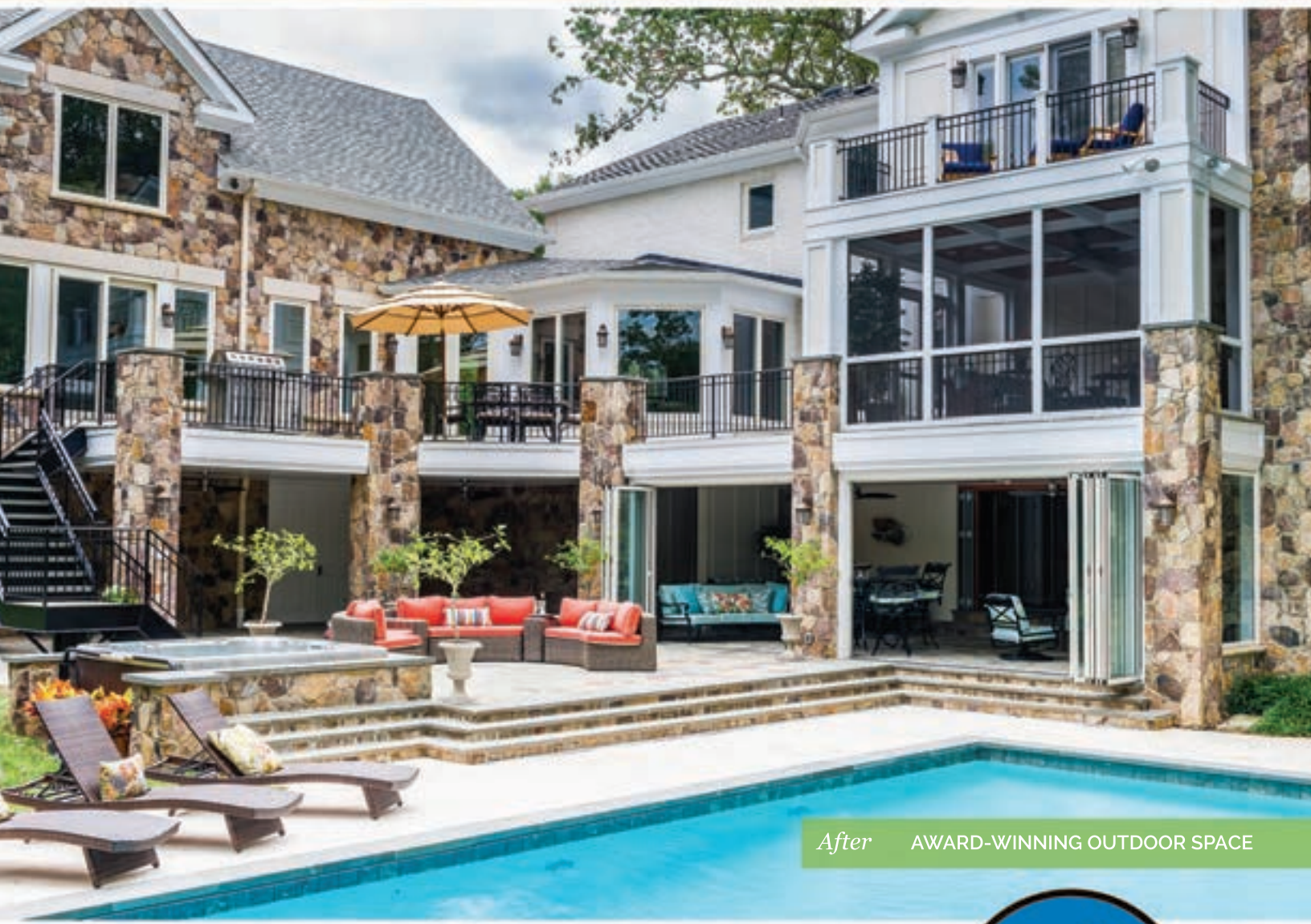
▲ Nanawall's newest addition is Cero, a framed, sliding-glass wall system constructed in energy-efficient, minimalist style with an ultra-thin profile, large floor-to-ceiling panels and concealed tracks. Available with four sill options and double- or triple-glazed windows, it can be automated. nanawall.com

POP-ART VIBE

► Dutch design firm StudioJob and Italian tile maker Mirage have teamed to create PoPJob, an innovative ceramic-tile surface for floors and walls. Made by applying thick, crystalline glass to pigmented and decorated porcelain stoneware, the shiny, smooth surface conjures a Pop-Art vibe. Available for floors in six-by-24-inch and eight-by-48-inch tiles, with seven options for color and striation. mirageusa.net



MORE THAN GREAT HOMES, WE BUILD QUALITY, INTEGRITY & TRUST



Since 1990, we have been designing & building award-winning renovations & new homes. Our on-staff architects, designers & craftsmen with decades of experience are eager to create your new kitchen, bathroom, home addition, whole house renovation or new custom home. Contact us today and discover why over 30% of our business is with repeat customers.

703.506.0845

bowersdesignbuild.com





SOUND SOLUTION

▲ Kirei's textured, modular EchoPanel Topo Tiles come in two motifs—Pixel (pictured) and Barcode—that absorb sound when applied to any flat wall. Providing 36 and 45 percent layer coverage per tile respectively, the renewable plastic tiles are available in 20 color options and can be rearranged to create random patterns. Ideal for after-the-fact sound control. kereiusa.com

ISLAND STYLE

▼ Made from reclaimed Indonesian teak, Kayu V-wood wall cladding from Island Timber is comprised of wood-composite tiles combining Indonesian heartwood and premium-grade pine. The weathered-wood look adds tropical flair while the mosaic weave conveys a contemporary vibe. islandtimber.com



SLEEK SILHOUETTE

Wood-Mode's Vanguard Plus Floating Vanity presents a modern profile with sleek, flat-fronted cabinet doors in high-gloss ribbon mahogany, distinguished by continuous horizontal graining. A matching wardrobe combines solid and polished stainless steel-framed glass doors. Available with a choice of interior drawer options. wood-mode.com

The Edelmann Love Toregas Group

Your Chevy Chase, Georgetown, Arlington and DC Metro Experts



John Edelmann, Jeff Love, Chadley Toregas, Alex Cernik, Lynn Kern

Top Agents Providing World Class Service

In the Top 10 of all Coldwell Banker Sales Teams in Washington DC & Northern Virginia and in the Top 1% of all Teams in North America

We specialize in Luxury Home Sales in Chevy Chase, Bethesda, Georgetown, Washington DC and Arlington, Virginia

We offer truly exceptional full service brokerage with honesty and integrity, your needs always come first.

And we are proudly introducing our new White Glove Service featuring specialty client services. Please call us for more information and details.



Coldwell Banker Residential Brokerage Georgetown Office

202-423-6900 • 1101 30th Street, NW, Suite 120, Washington, DC 20007

www.edelmannlove.com

On parle français 240-421-1787





MAD ABOUT MARBLE

◀ Marble Systems' Studio Mosaics collection of water-jet tiles features a host of geometric patterns inspired by English, French Bistro, Deco and Mid-Century Modern motifs. Pictured here, Skyline in Snow White honed Monte marble, available in 12-by-12-inch slabs. marblesystems.com



GRAND ENTRY

▲ The knobs and levers in Grandeur Hardware's Soleil collection of interior and entry-door hardware boast circular plates embellished with intricate rosette motifs. Decorative knobs and levers come in crystal or brass, and a choice of seven finishes. Pictured above, the Georgetown Lever in Vintage Brass. grandeurhardware.com

FARM FRESH

▲ The rustic barn-door look is growing in popularity, as Simpson Door Company will attest. Its recently launched collection of interior and exterior barn doors introduces a wide range of styles, sizes and wood options, including sapele mahogany (pictured). Available with sliding barn-door hardware and tracks. simpsondoor.com

VERY VERSATILE

► Staron's solid-surface countertops offer a crisp, modern profile in durable, impervious, hygienic and easy-to-clean acrylic. Formed by heating and bending, Staron surfaces can be custom-shaped and, as a renewable material, completely refurbished at any time. staron.com





CHIC SURFACE

▲ Once emblematic of cheesy '70s style, today's Formica offers attractive, durable, modern surfaces. Pictured above, a kitchen featuring a wall clad in Gray Renew, part of the Solid Surfacing line; an island countertop in Black Fusion, from the 180fx line of granite-like surfaces; and two traditional laminates—Black Riftwood on the island base and Neo Cloud on the cabinetry. formica.com

WORK OF ART

▼ Italian marble-design firm Citco has partnered with designer Ferruccio Laviani to create the Shöona wall, a panel-cum-sculpture depicting delicate blossoms carved into Statuarietto marble and lit by inset plexiglass spheres. Measuring 12-and-a-half by 11-and-a-half feet, reproductions can be purchased for \$520,100 through citco.it



John F. Heltzel AIA ARCHITECTS

703.748.8801
HeltzelAIA.com



BECKER MORGAN GROUP
ARCHITECTURE
ENGINEERING
COASTAL DESIGN

www.beckermorgan.com



■ **Anthony Wilder Design/Build, Inc.**
 The talented team at Anthony Wilder Design/Build creates custom architecture with artful flair; they strive to realize the company's vision of inspiring clients to build their dreams by delivering the ultimate design/build experience.
 301-907-4535
anthonywilder.com



■ **AV Architects + Builders**
 AV Architects + Builders is an architect-led design-build firm located in Northern Virginia. Their unique design-build process ensures designs customized around your lifestyle, peace of mind and the feeling of living on vacation, all-year round.
 703-865-5065
avarchitectsbuid.com



■ **Becker Morgan Group, Inc.**
 Award-winning architectural/engineering firm providing distinctive residential design since 1983. Becker Morgan Group focuses on design excellence and exceptional client service. Services range from consulting via freehand sketches to comprehensive design.
 410-546-9100
beckermorgan.com



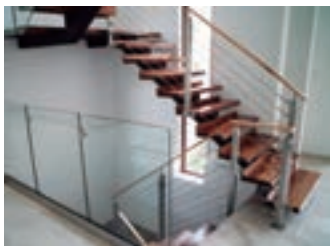
■ **Bowers Design Build**
 For 27 years, we have been delivering exceptional designs and construction experiences for major renovations and new homes. A complete turn-key operation, total customer satisfaction is our number one goal.
 703-506-0845
bowersdesignbuild.com



■ **Foxhall Homes**
 Award-winning custom builder recognized for outstanding design, superior quality of craftsmanship and effective use of space. Foxhall Homes is highly regarded for its attentive, boutique-style customer service.
 301-369-4255
foxhallhomes.com



■ **GTM Architects**
 Established in 1989, GTM Architects is an award-winning design firm that offers architecture, planning and interior design services; committing to place the needs of clients and their projects first.
 240-333-2000
gtmarchitects.com



■ **HP Metal Fabrication**
 HP Metal is a design, fabrication and installation company that delivers custom made stainless steel products. Their work elevates the value and elegance of homes and buildings across the VA/MD/DC area.
 703-594-0332
hpmetal.net



■ **Hopkins & Porter Construction, Inc.**
 Serving the Metro DC area since 1977 and providing custom design/build services specializing in additions and remodeling. Their singular goal is to create a space you'll love while respecting your budget. If you can dream it, they can create it.
 301-321-7873
hopkinsandporter.com



■ **James McDonald Associate Architects, PC**
 This new home was designed to use the lot width to its advantage. Almost every room in the house is flooded with light and windows from both the front and the rear of the house.
 703-757-0036
jamesmcdonaldarchitects.com




■ **John F. Heltzel, AIA, PC**
 John's mindful design approach focuses on listening. This simple yet unique approach, enhanced by talent and experience, guides clients to the solution that achieves their goals and respects their lifestyle.
 703-748-8801
heltzelaia.com

Casey Margenau

— Over 2.8 Billion Sold — Fine Homes & Estates

Virginia's Leader in Luxury and International Real Estate Marketing For Over 30

View Casey's  Tours of These & Other Homes



KNOWLEDGE

EXPERIENCE

TRUST

Now more than ever, your home needs the Marketing, Knowledge and Experience that only Casey Margenau Fine Homes delivers!

We provide the most extensive market exposure possible by capitalizing on local, national and international advertising. With more than 30 years in sales, \$2.8 billion in real estate sold, over 27 years as a Top Producer in Northern Virginia, Casey Margenau uses his wealth of experience to ensure the financial success of his clients. His in-depth market knowledge allows his clients to achieve better results

Casey Margenau Fine Homes & Estates, Inc.



www.margenau.com
703.827.5777



DEAN DESIGN, LLC
BETTER HOMES BY DESIGN



Looking for that perfect home and can't seem to find it? Let Dean Design help you design and build your perfect custom home...all at a price that is affordable!

Dean Design has been building homes of high quality since 1995. These homes are manageable, yet still have the luxurious features and qualities usually reserved for large estates. We are a design-build firm and work with you throughout the entire process, from start to finish, to deliver the custom home that fits your style of living.

Building better homes for your family.

www.deandesignhomes.com

703.442.8600



■ **Lynbrook of Annapolis**

Lynbrook, an award-winning architectural home builder, specializes in custom home building, historic and complete renovations. Partnering with architects and homeowners, Lynbrook delivers excellence and exceptional quality at the best value.

410-295-3313
lynbrookofannapolis.com



■ **Pyramid Builders**

Over three decades of building beautiful architecturally designed custom homes and renovations guided by enduring values. Pyramid Builders offers architects and homeowners a trusted partner in the great craft of homebuilding in MD, VA and DC.

410-571-7707
pyramid-builders.com



■ **Randall Kipp Architecture, Inc.**

The success of any building is rooted in anchoring the building to its ground plane and providing a sensitivity to its surroundings. The magic and the discipline of our work is in finding and strengthening our relationships of the building to its surroundings.

804-438-6287
kipparchitecture.com



■ **Studio Z Design Concepts, LLC**

Studio Z is an award-winning architectural firm specializing in custom and luxury residential architecture and large-scale renovations. Studio Z provides complete services for homeowners and builders on custom and speculative homes.

301-951-4391
studiozdc.com



■ **Tri-State Stone**

Fourth-generation, family-owned stone and building supply company. Tri-State quarries Carderock® Stone and is one of the region's best stocked distributors of natural stone. They also carry a variety of other building products.

301-365-2100
carderock.com



■ **Winchester Construction**

Established in 1980, Winchester specializes in "The Art of Fine Building." Every home is built with an uncompromising commitment to quality, attention to detail and the highest level of craftsmanship.

410-987-5905
winchesterinc.com

Visit HomeAndDesign.com for the finest in architecture and luxurious interiors



RESIDENTIAL ARCHITECTURE

WWW.STUDIOZDC.COM
301.951.4391



301-365-2100
carderock.com





DOMINION

ELECTRIC SUPPLY COMPANY, INC.

All You Need is Light

dominionelectric.com



audio/video + lighting

Cutting Edge



After severe flooding destroyed a McLean, Virginia, basement—including a home theater designed by Integrated Media Systems in 2005—the owners decided to overhaul the space. IMS reconstructed and updated the theater area, collaborating with designer Barry Dixon, who selected its elegant furniture and finishes.



THEN

The theater was state-of-the-art for 2005, but needed its audio/video systems upgraded for today's technology.

The projector was ruined and other components had to be removed and reinstalled later.

Theater-style seating limited the room's functionality. The owners wanted a space that would feel more like a regular room, decorated in a timeless, inviting style.

NOW

The new AV package allows for ultra high-definition resolution and audio-encoding formats. The system is integrated with the existing whole-house Savant Control System, operated via iPad.

IMS installed a new Sony receiver and video projector. Undamaged components, including the speakers and screen, were reinstalled.

Barry Dixon created a multi-purpose area with Tomlinson sofas of his own design and swivel chairs from Coup D'Etat. Phillip Jeffries grass cloth on walls and ceiling define the space, lit by Apparatus sconces.

Home Automation: Tom Wells, Integrated Media Systems, Sterling, Virginia. Interior Design: Barry Dixon, Barry Dixon, Inc., Warrenton, Virginia. Photography: Bob Narod.



A.B.E. NETWORKS

Technology Simplified

(301) 495-0964 | abenetworks.com



A.B.E. NETWORKS is the Washington area's premier custom residential and commercial technology design and integration firm. Our award winning organization utilizes premier products fused with your home's decor resulting in a top tier personalized experience.

Custom Automation Solutions | Audio/Video Systems | Network + Data Services | Integrated Security
Lighting Control Systems | Motorized Window Shades | Energy Monitoring | Infrastructure Management

That's Entertainment

An unfinished basement becomes a sleek, versatile space for family fun

Homeowners in Ashburn, Virginia, wanted to create an extensive entertainment space in their unfinished basement. They contacted Justin Schopp of Moss Building & Design for the job, specifying an open floor plan that would incorporate a home theater, bar and space for a pool table—all in inviting, modern style.

“The owners wanted something special,” relates Schopp. “They requested a modern sensibility—unlike the rest of the house—so it would feel like an escape when they came downstairs.”

Moss Building & Design collaborated with Reston-based Synergy Design & Construction on the project. To create the desired aesthetic, Schopp and his team chose engineered maple floors and maple cabinets and wall panels throughout. The panels are trimmed with decorative aluminum strips, while other aluminum accents such as pendants and stair balusters unify the space. A water feature and gas fireplace add style and interest.

The home theater features acoustic carpeting, plush theater seating and a 110-inch Elite Prime screen. The coffered ceiling conceals speakers and anchors the Sony projector. “Usually clients want the home theater in a separate room,” Schopp observes. “The open plan made it harder to get the acoustics right.” Around the corner, a bar boasts built-in cabinetry, honed-granite countertops and a TV.

WiHome Integration installed the electronics, along with a Control4 automation system that operates everything from the projector, speakers and receiver to the Blu-ray, Apple TV and cable box. It also controls the lighting and climate in the space. A smart-phone app means that one touch of a button does it all.

Renovation Design & Construction: Justin Schopp, Moss Building & Design, Chantilly, Virginia. Home Automation System: WiHome Integration, Burke, Virginia. Photography: Robert Merhaut.





JUSTIN SCHOPP'S
TRADE SECRETS

- Virtual-reality systems, which show you how everything is going to be scaled and help you visualize a finished project, are the future of the industry. We recommend working with a company that utilizes them. They also bring some fun into a process that can be very stressful. You should enjoy the experience!
- When designing a basement, think about your family now and also how your needs will evolve over time. Keeping a space open will allow you to design it with lighting and furniture that can be changed, rather than hard walls that will be expensive to update.
- Choose a company that will collaborate with you and make you part of the renovation process.

Lighting the Way *wall sconces with style*



1



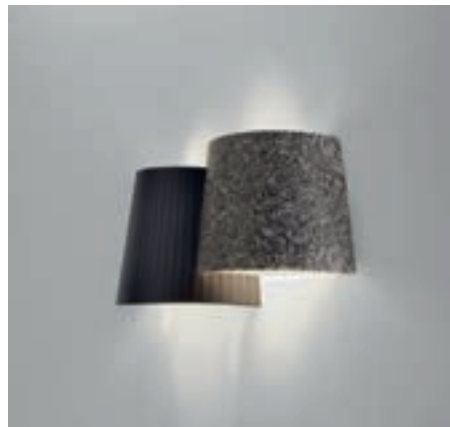
2



3



4



5



6



7



8



9

1/ Ellory Sconce. Antique mirror, brass and bronze; \$900. arteriorshome.com **2/** Portese Wall Sconce. Antiqued brass with shantung shade; \$1,190. curreycodealers.com **3/** Atomic. Metal in polished nickel and matte black. \$885. troy-lighting.com **4/** Fizz Sconce. Hand-blown seeded glass, metal, brass accents; \$803. hubbardtonforge.com **5/** Melting Pot. Design by Sandro Santantonio; metal and acrylic; from \$770. axolightusa.com **6/** Barron. Metal in aged brass or polished nickel; \$330. hudsonvalleylighting.com **7/** Teardrop Sconce. Hand-blown glass and metal; \$1,080. tracygloverstudio.com **8/** Marquise. Florentine brushed gold leaf with hand-cut faceted crystals; \$2,745. fineartlamps.com **9/** Arpeggio. Hand-crafted iron with antique silver-leaf finish and polished stainless-steel accents; \$555. corbettlighting.com



**AMERICAN
automation**

Home Theater • Whole House Audio Video
Telephone-Intercom Systems • High Speed Internet
Energy Management • Lighting Control
Security & Safety Alarms

Maryland | DC | Virginia 800.394.6454
www.american-automation.com



CEA
MEMBER

Integrating Science

isf

HAA

CEDIA Electronic Lifestyles Award Winner

VADCJS #11-2129

Bright Ideas



TOUCH OF GLASS

▲ Designed by Foster + Partners, the Orsa pendant conceals an LED light source within a glass orb, giving the impression of a floating disk of light. The conical glass shape mimics the angle at which light is diffused by its specially engineered lens. Available as a single suspension light (pictured) from 23 to 78 inches long, or in clusters that form a striking chandelier. artemide.com

ARCTIC GLOW

◀ Hudson Valley Lighting's Tyrell pendant makes a glamorous statement in any space. It's composed of glass tubes that are opaque at the top and clear on the bottom. The tubes are arranged in concentric circles that hide candelabra lights in the center of the fixture, which emits a mysterious glow reminiscent of glacial ice. Available in four pendant sizes and as a sconce. hudsonvalleylighting.com



MADE IN THE SHADE

▲ Lighting systems by Legrand, a global electrical and home-automation company, now have the ability to control motorized window shades. The software update enables users of Legrand's On-Q and Adorne lighting systems to add this functionality to their homes without installing new wiring. The system is compatible with the company's QMotion shades. legrand.us

HIDDEN SOUND

▲ Control4's new Triad Designer Series conceals high-performance speakers in unobtrusive, four-inch grills that can be flush-mounted on the ceiling. Available in both full-range and subwoofer models, they reproduce a wider range of audio than traditional "invisible" speakers and fill a room with sound via Triad's Ultra-Broad Dispersion (UBD) tweeter. triadspeakers.com



TROPICAL FLAIR

◀ The Mai Tai pendant by Troy Lighting combines interwoven ribbons of flat, hand-worked iron in a textured, cottage-bronze finish. The metalwork encircles a linen shade that softly diffuses light. Available in three pendant sizes and as a wall-mounted sconce. troy-lighting.com

audio/video + lighting

electronic home environments
enhancing your lifestyle with technology

888-323-8671 | ehenvironments.com

Whole House Audio • Media/Theater Room • Lighting Control
Shade Solutions • Network Infrastructure • Security



Robert Meinhart Photography; Mellor Construction-Builder



LIGHT MOVES

▲ Mitzi's graphic Astrid chandelier consists of a sleek black axis supporting "arms" that can be moved and adjusted in myriad ways. The fixture comes in a variety of sizes, from 18 to 36 inches high, sporting one, two, four or six arms. Buyers can choose between aged-brass (pictured) or polished-nickel finishes and round or tubular bulbs. mitzi.hudsonvalleylighting.com

The Designer and Homeowner Source for over 75 Years

For over 75 years, Dominion Electric Supply has provided its designers and homeowners with unmatched quality and affordable prices. With an outstanding reputation for excellence within the industry, Dominion Electric Supply is a trusted resource.

- ▶ Certified Lighting Designers
- ▶ In-store lighting design services
- ▶ Three convenient locations
- ▶ Area's finest display of lighting, fans, controls and more
- ▶ Latest LED and energy saving lighting



FEISS

Kellen Collection - The cylindrical LED pendant represents a beautiful marriage of art and light.

DOMINION
ELECTRIC SUPPLY COMPANY, INC.

(*Items shown may not be currently in-stock or on display. Please call for availability.)

Lighting Showrooms

Arlington | Chantilly | Laurel
703-536-4400 | 703-631-8300 | 301-470-2121

www.DominionElectric.com



ART DECO STYLE

▲ Inspired by 1920s ship saloon lights, the Pillar Pendant by Davey Lighting bundles glass rods together in a sleek cylindrical form, creating a fluted appearance. Interior LED lights are concealed in the top of the fixture, emitting both downlight and a perimeter of diffused light. The fittings are chrome-plated. originalbtc.com



AL FRESCO ENTERTAINMENT

▲ The new SunBriteTV 84-inch 4K UHD outdoor television enlivens any summer soiree. Designed for permanent outdoor installation with rustproof cabinets and a powder-coated aluminum exterior, it can withstand rain, snow, ice, humidity and temperature extremes. An anti-glare screen delivers a prime viewing experience even in bright sunlight. sunbrite.tv.com



BARELY THERE

▲ Lutron's Palladiom QS keypad combines a minimalist aesthetic with a wide range of customization options that control lighting, window shades and temperature. Designed to blend into any décor, the sleek keypad features flush buttons and faceplates made of the same material (glass, metal or plastic) in a total of 16 color options. Adjustable back-lighting makes the keypad easy to operate in low light. lutron.com

ON POINT

► Designed in 1962 by Achille Castiglioni, Flos's playful Taccia lamp mimics the shape of an upside-down ceiling fixture. An adjustable blown-glass diffuser lets users point the light where they want it. Flos recently introduced a slightly smaller, 19-inch-tall version of the original that comes in violet (pictured), anodized silver, bronze and black. usa.flos.com



Distributed Audio & Video • WiFi & Wired Networks
Automation & Control • Home Theater • Video Surveillance
Alarm & Access Control • Lighting & HVAC Control
Motorized Shading

Schedule a FREE consultation:
703-464-0736 • www.imsva.com





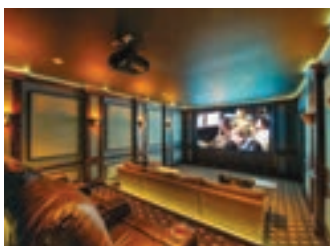
■ **A.B.E. Networks**
 Custom technology integration is our passion. Specializing for 28 years in home automation, entertainment, security, connectivity and more. A.B.E. Networks makes technology and your home work together for you.
 301-495-0964
abenetworks.com



■ **American Automation**
 Designer's Choice for audio/video. Servicing security, lighting, network and control systems.
 800-394-6454
american-automation.com



■ **Dominion Electric Supply**
 Take home the hottest trends in lighting from our three unique area lighting showrooms. Consultants provide comprehensive lighting layouts, technical expertise and assistance with product selection.
 703-536-4400
dominionelectric.com



■ **Electronic Home Environments**
 High-end custom home automation solutions provider that services VA, MD, DC and South Florida. Custom solutions for distributed audio, media/theater rooms, lighting control, shade solutions, network infrastructure and security.
 888-323-8671
ehvironments.com



■ **Integrated Media Systems**
 Since 1979, Integrated Media Systems has made complex technology simple. From customized designs to elite home technologies, they make homes and businesses of the future a joy to own today.
 703-721-4857
imsva.com



HomeAndDesign.com

Stay connected to
 HOME & DESIGN
 Magazine
 everywhere you go.

HOME & DESIGN

THE MAGAZINE OF ARCHITECTURE AND FINE INTERIORS

Tech Trends



A.B.E. Networks designed a dedicated home theater in atmospheric style for a Potomac residence. Photo by Michael Bennett Kress.

What trends are you seeing in home-technology systems?

Ultra-realism has been the operative word in home entertainment during the past year. Projector and video-display manufacturers are leading the way with super high-definition products, a response to consumers who expect images and sound that are as close to “being there” as those in the industry have ever seen. This trend is particularly true for music, as consumers can now experience concert-level sound at home. Also, downloaded and streamed content have become the preferred medium, making robust, high-quality home networks vital.

On other fronts, home security is increasingly important, with plenty of options

for high-quality, affordable video monitoring and recording. Monitoring and unlocking your front door remotely is commonplace these days. Home-control systems are cost-effective, reliable and simple to operate with voice-control products like Amazon Alexa that are finding their way into new homes and are being retrofitted into existing residences. —Tom Wells, *Integrated Media Systems*

What is on the horizon in whole-house technology?

As more devices become connected to the Internet, a need to control them in a unified way has grown. Coordinating several different apps does not create a satisfying customer experience, so home-automation

systems now take disparate apps and transform them into one intuitive setup. However, automation can only take a household so far with handheld devices. Voice control is the missing link that will revolutionize whole-house technology.

Voice-control is already on the rise with technology personalities such as Siri, Alexa, Ok Google and Bixby, all of which can understand inflections, accents, background noises and homonyms. We are starting to see the implementation of voice control in the X1 Voice Remote from Comcast, Apple TV and others that lets users select channels, shows, actors, directors, sports teams and more, and receive recommendations. Soon, we will see voice-control capabilities that

utilize cross-system logic. —Avi Benaim, *A.B.E. Networks*

What common mistakes do consumers make when lighting their homes?

The most common mistake is choosing the wrong size light fixture. Consumers tend to go too small, particularly with exterior lighting. If the fixture is too small, not only will its scale be wrong for the space, but it will also give off too little light.

Another mistake is placing recessed lighting incorrectly. While down-lighting generally leaves dark spots in a room or overshadows task areas, placing recessed fixtures over a specific task area and coupling them with other sources of light will prevent shadows being cast. —Erin Schwartz, *Dominion Electric Supply Company*



CALIFORNIA CLOSETS®

Exceptional designs for every room

703.573.9300 | californiaclosets.com

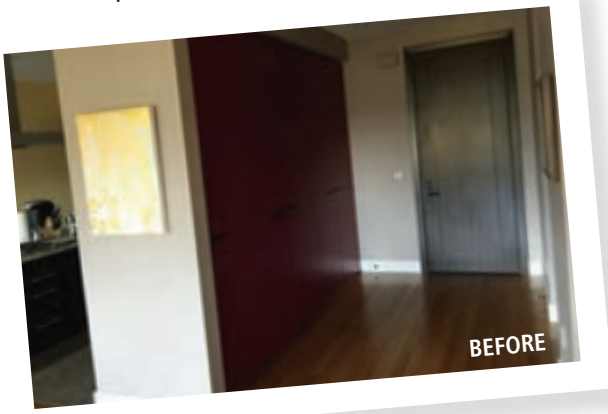


closets + organized spaces

Closet Envy



The owners of a Georgetown condo wanted to brighten and modernize its dark spaces while adding functionality and efficient storage throughout. They hired Boffi Georgetown to overhaul the kitchen and bathrooms and to replace inadequate closets—including the one in the front hall, above.



THEN

The hall closet was set into a drywall frame with doors that folded back. The design was inconvenient for accessing the closet's contents.

Traditional design elements like moldings and expanses of drywall looked stodgy.

Dark-stained wood floors and red-painted closet doors made the front hall feel dark and dated.

NOW

The finished project features a streamlined closet system built without a drywall frame. The doors open easily, while interior shelving caters to the owners' specific needs.

The new closet system replaces moldings with reveals at the top and bottom of the closet, wrapping around the side at the top to create a decorative feature.

White-painted cabinetry and off-white, cement-look porcelain-tile floors keep the condo light and bright with a sleek, contemporary aesthetic.

Closet Design & Fabrication: Julia Walter, Boffi Georgetown, Washington, DC. Photography: Angie Seckinger.

Experience the before and after



© 2016 California Closet Company, Inc. All rights reserved. Each franchise independently owned and operated.

See their space before **#CCBeforeAfter**

CALIFORNIA CLOSETS®

californiaclosets.com 703.573.9300

WASHINGTON DC 5223 Wisconsin Ave. NW

Curated Style

A vibrant contemporary art collection takes center stage in a kitchen by Barbara Hawthorn

Longtime Potomac clients asked Barbara Hawthorn to renovate their mundane kitchen. Avid home chefs, they wanted an efficient, uncluttered space in which to work—and they specified a contemporary aesthetic. Most important, they wished to incorporate their extensive collection of contemporary art into the mix.

Collaborating with Ezio Mattiace of Arte Modus, Hawthorn selected Arclinea cabinetry and quartz countertops to neutralize the wife’s bold palette, then set about creating ways to showcase the couple’s art, which features contemporary and Pop Art pieces by icons such as Claes Oldenburg and Keith Haring.

“Their collection is very important to them,” Hawthorn observes. “And they wanted an element of fun in how we did it. The house had art scattered all over; we took favorite pieces and what was appropriate for the kitchen.” Now, two glass-fronted cabinets display whimsical pieces on glass shelving, illuminated from above and below.

Reflecting the owners’ playful sensibility, Hawthorn created display shelves for useful items that double as art: bottles of sparkling water above the TV and dog food in the pantry—with a row of Campbell’s Soup cans in a nod to Andy Warhol. The glass-fronted Liebherr fridge reveals a Claes Oldenburg cake sculpture along with actual food.

Photos occupy a magnetic stainless-steel wall in the breakfast nook. And storage abounds, with stainless-steel shelves in the peninsula for cookbooks. A 3-D sculpture by Robert Indiana shares counter space with a top-of-the-line cooktop customized through Arclinea.



Interior Design & Contracting: Barbara Hawthorn, Barbara Hawthorn Interiors, Ltd., McLean, Virginia. Architecture & Kitchen Supplier: Ezio Mattiace, Arte Modus, Washington, DC. Photography: Kenneth M. Wyner.



BARBARA HAWTHORN'S TRADE SECRETS

- When organizing a collection, group similar objects together—whether by subject, color, type, style, etc. Give them an organized space and their impact will be much greater.
- Lighting is important. In this project, we lit the insides of each cabinet from both top and bottom. We also used glass shelving so as to illuminate every shelf.
- Create work centers in your kitchen, considering what tools you'll need to have handy in each area. Build space for those tools into the design.
- Work with durable surfaces in the kitchen. We used a recyclable rubber floor in this project; it's fun and attractive and will last forever.

Form + Function *chic armoires stash clutter*



1



2



3



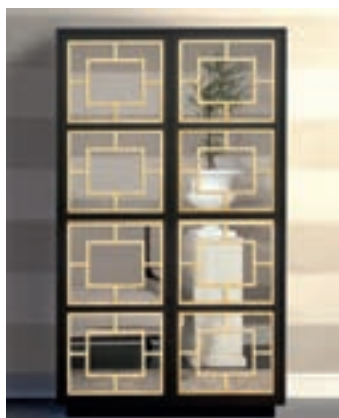
4



5



6



7



8



9

1/ Atten Armoire. Hardwood in Amber Bamboo finish; \$5,295. stemgoods.com **2/** Hestia Wardrobe. Lacquered tulip wood and laminated birch; \$2,570. babatude.com **3/** Social Study. Designed by Barbara Barry; Dune hardwood with linen-lacquer finish and brass hardware; from \$29,580. bakerfurniture.com **4/** John-Richard Anzu Cabinet. Black walnut with geode handles, gesso doors and gold trim; \$3,575. blisshome.com **5/** Heirloom Silver-Chest Armoire. Hardwood with riveted iron straps and hand-forged and -hammered iron hardware; \$2,585. restorationhardware.com **6/** Lacquered Carre Armoire. Engineered hardwood with brass and Lucite hardware; \$2,998. anthropologie.com **7/** Zoe Armoire with Mirror and Plinth Base. Designed by Isabella Costantini, handmade in Italy of lacquered wood, mirror and gold leaf; \$5,540. artemest.com **8/** Tuxedo Armoire. Designed by Suzanne Kasler for Hickory Chair; maple with cherry veneer and brass; \$10,429. sheffieldfurniture.com **9/** Montgomery Master Chest. Pine and hardwood veneers, mahogany finish; \$7,199. neimanmarcus.com

Creating More Time, Space and Peace in Your Every Day

The Art of Organization

at its Finest



closetfactory
the art of organization

Closets | Garages | Home Offices | Entertainment Centers | Pantries | Wall Beds | Wall Unit | Craft Rooms
Laundry Rooms | Mud Rooms | Wine Rooms

NOW OPEN

Tysons Showroom And Design Center
8500 Leesburg Pike, Suite 103, Vienna, VA 22182

Complimentary In-Home Design Consultation

Call or Visit Today for Your Free Design Consultation

703.796.9600

Visit us online at closetfactory.com



■ **California Closets**
California Closets believes exceptional design transforms people's lives. Rooted in a commitment to offer quality custom storage solutions, California Closets helps people become better versions of themselves, with more time and space to focus on what matters most.
703-573-9300
californiaclosets.com



■ **Capitol Closet Design**
Capitol Closet Design is Washington's premier closet company since 1997. Their Tyson's Closet Showroom is the Washington area's largest with more than 20 in stock colors and 75 styles to choose from.
703-827-2700
capitolclosetdesign.com



■ **Closet Factory Washington DC & Baltimore**
Gain more time, space and peace. They create custom storage solutions. Some call them cabinet makers or contractors, but what they do is more meaningful: they optimize space and save you time.
703-796-9600
closetfactory.com



■ **Closets by Design**
The largest closet, garage, office and storage company in the DC area. Custom solutions for every organizing need. Organize your closets, pantry and garage. Or have a custom office designed for your home. Since 1982.
703-330-8382
closetsbydesign.com



■ **Poliform | sagart studio**
Visit their luxurious contemporary-living showroom in a 19th-century Georgetown row house, where their exclusive collections of Europe's finest brands in furniture, closets, kitchens, bathrooms and lighting are combined within an authentic residential setting.
202-554-8658
poliformdc.com



Above: A sleek home-office system from California Closets encompasses a desk and computer station as well as modular shelving that can be adapted to fit the space. Shown here in a Classic Cashmere finish.

ASK THE PROS

Clutter be Gone

What new innovations are you seeing in home-office storage?

I am finding that with the developments in technology and the reduction of actual paper storage, people are looking for a more minimalist office environment. This includes flexible work surfaces such as standing workstations and more Bluetooth and wireless technology that reduces the need for wire management.

I'm also seeing more individuals and families working from home. They tend to require multiple workstations that might incorporate additional slide-out work surfaces. There's also a higher interest in hidden storage for equipment such as printers and scanners.

Overall, I'd say that most of my clients are more focused on versatility and less clutter around the workspace. They really appreciate a custom space designed with open and closed areas, plenty of storage, finish options, lighting and hardware, all of which create an efficient and enjoyable work area. —*Jeanne Scott, California Closets*

What are the latest trends in storage solutions?

We are seeing a range of new trends, which we expand on in our collections. First, consumers are looking for aesthetically pleasing storage solutions that they can display, often made of natural materials like wood, woven sea grass or water hyacinth, and mixed metals.

Small-space solutions continue to be a trend as people move into more urban areas or try to maximize the space they have. Customizable cabinets feature risers, shelves or modular drawers while vertical storage space can be key in a tight space.

Our customers also look for labeling solutions to identify contents. For example, easily erasable chalk labels that are adhesive or can hang on plastic bins, boxes and jars continue to be popular. Labeling is a simple way to organize any area of your home, and it can save valuable time when searching for things. —*Julie East, The Container Store*

Congratulations Closets By Design.

Recognized as HOME & DESIGN 2016 Designers Choice Award
Favorite Custom Closet Company



Bob Narod, Photography, LLC

Custom Closets, Garage Cabinets, Home Offices and more...



**20% Off Plus
Free Installation**

20% off any order of \$1000 or more. \$100 off any order of \$700 or more. Not valid with any other offer. Free installation with any complete unit order of \$500 or more. *With incoming order at time of purchase only.

Call for a free in home design consultation and estimate

**703-330-8382
301-880-0866**

www.closetsbydesign.com
Licensed and Insured

2009 © All Rights Reserved. Closets by Design, Inc.

HOME



**Closets
byDesign**



centor®

Proudly Serving the Washington DC Metro Area

800.301.6602 | qwdinc.com



Floors + windows + doors

Mid-Century Inspiration



The owners of a mundane 1960s split-level in Silver Spring hired architect Bruce Wentworth to refresh its uninspired front façade and introduce a modern look. A commanding front entry, new windows and an attractive two-car garage realized the changes his clients were looking for.



THEN

A front entry with a small overhang and nondescript front door was easy to overlook.

A ramshackle-looking carport was an unappealing appendage on the side of the house.

A small, dated picture window to the left of the front entry was flanked by double-hung windows.

NOW

A projecting front porch is delineated by stucco cladding and framed by the wood, brick and stone of the rest of the house. A bold red entry door and sidelite capture attention.

A two-car garage with cedar doors is a vast improvement. Wentworth balanced the garage visually by also cladding the other end of the home in cedar.

Four large windows replaced the smaller original windows beside the door, conveying a modern vibe. All the window frames are now painted black.

Renovation Architecture & Construction: Bruce Wentworth, AIA, Wentworth Studio, Chevy Chase, Maryland. Photography: Morgan Howarth.



CHOOSE FROM FOLDING, SLIDING AND FRENCH DOORS OR THE NEW FIXED-LITE WINDOW.



Featuring built-in screens and shades for control of insects, sunlight and privacy, Centor Integrated Doors will ensure your clients can enjoy inside-outside living without the compromises, all year round.

As your trusted local supplier for over 25 years, Quality Window & Door can help you specify these award-winning doors in your next project. Experience them in our showroom today!



Proudly Serving the Washington DC Metro Area
t 800-301-6602 | qwdinc.com



Marshland Idyll

Mark McInturff designs a Rehoboth Beach abode to enjoy its special wetlands setting

Perched directly atop an expanse of marshland on the edge of the Atlantic Ocean, a house built by and for the owner of Boardwalk Builders, Patty McDaniel, was designed for its location by architect Mark McInturff. “It is a remarkable spot,” he says. “With the water and marsh grasses all around, it feels meditative.”

The three-story house hovers over the wetlands on pilings that allow water literally to lap at its foundation. The structure is L-shaped, with the main rooms and master suite on one side and bedrooms on the other. Where the wings meet, a two-story screened porch serves as the family’s main gathering area, accessible from nearly every room. “It’s a corner site,” McInturff relates, “so I was able to position the house to capture the landscape without the neighboring houses being visible.”

Windows by Marvin—all triple-coated for marine use—in a range of shapes and sizes play particular roles in the design scheme. “The bigger windows are meant for looking through and the small ones are for opening,” McInturff explains. “They suit the architecture of the house.” The windows meet at the corners of the structure to create an expansive effect.

While the water-facing façade is almost all glass, the sides of the house that face neighbors are more closed off. Rather than punctuate those expanses of wall with random small windows, McInturff designed large cutouts that contain windows combined with siding in a decorative basket-weave pattern. The house is clad in cedar shakes that reflect its coastal locale.

Architecture: Mark McInturff, FAIA, McInturff Architects, Bethesda, Maryland. Builder: Patty McDaniel, Boardwalk Builders, Rehoboth Beach, Delaware. Photography: Julia Heine.





MARK McINTURFF'S

TRADE SECRETS

■ Be sure to choose a mixture of sizes when selecting your windows, and make sure they suit the architecture. Big windows are for looking through if you want to emphasize a view. Smaller windows should be functional. A variety of window sizes will also add visual interest.

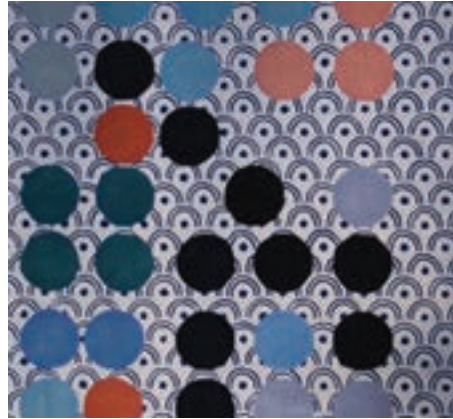
■ Always try to position windows to capture views. It's important to bring the outside in.

■ The biggest cost line item in any project is going to be the windows. Put them where they will count. I don't design glass boxes; I put large windows in places where they make a difference and use little windows elsewhere. It's a question of asking yourself where you want your money to go.

Cutting a Rug *modern motifs under foot*



1



2



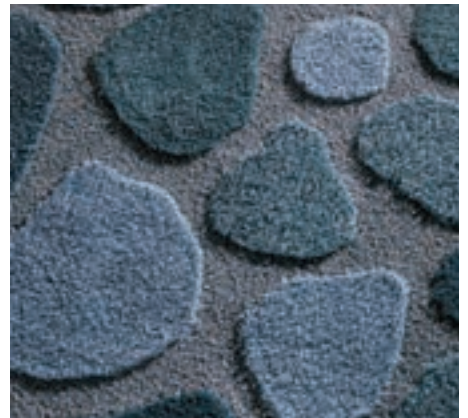
3



4



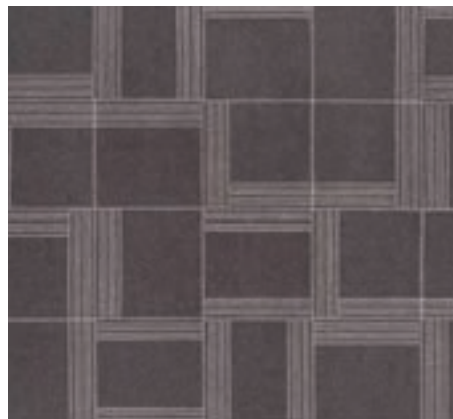
5



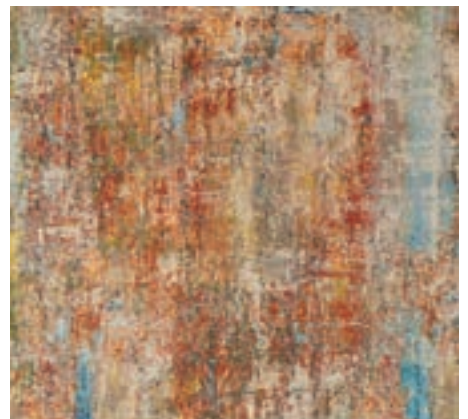
6



7



8



9

1/ Pasture. Design by Larry Hokanson for Scott Group Studio; handmade in Nepal; \$13,400 for 9x12. scottgroupstudio.com **2/** Japanese Abstractions No. 9. Design by Thomas Dariel; New Zealand wool, silk; from \$2,500. maisondada.com **3/** Bois, Taupe. Hand-knotted Tibetan wool, Chinese silk, nettle fibers; \$10,000 for 8x10. newmoonrugs.com **4/** Novara Collection, Landigo Turquoise. Silk, made in India; price on request. starkcarpet.com **5/** Costellazioni-IV by Dimorestudio. Wool, silk; \$1,081/square meter. illulian.com **6/** Archipelago. Design by Gunilla Lagerhem Ullberg; wool, linen, Lurex; \$9,209 for 5'7" x 7'10". apartmentzero.com **7/** Promenade de Printemps Grande. Hand-knotted wool, silk; price on request. pattersonflynmartin.com **8/** Oryza White. Designed by Ododesign for GAN; felted wool and embroidery; from \$1,024. gan-rugs.com **9/** Soho-Multi. Wool, silk; price on request. dorisleslieblau.com

Carpet Creations & Collage Workroom

Broadloom and Area Rugs
Showroom & Workroom to the Trade Only

5040 Boiling Brook Parkway #B, Rockville, MD 20852
301.881.3399 | carpetcreations@verizon.net | www.carpetcreationsandflooring.com



Whitney Albrittain Design, LLC



Whitney Albrittain Design, LLC



Paula Grace Designs, Inc



Hollace & Clare

Carpet, Hardwood, Woven Vinyl, Luxury Vinyl tile and Planks



Perfect Fit



PRECIOUS STONE

▲ Since diamonds are the world's hardest material, it's no wonder Armstrong Flooring recently put the durability of these gems to use. Vivero with Diamond 10 Technology is a line of vinyl flooring infused with diamond particles and designed to withstand dents, scratches and scuffs; it's also stain-resistant and waterproof. armstrongflooring.com

PERFECT HARMONY

◀ Scott Group Studio's latest rug collection, christened Basha after the Japanese word meaning "place," is meant to impart a sense of harmony to the home with its soft, serene motifs. Pictured here, Cambrian with Silk mimics the organic lines and textures found in nature. Hand-tufted in the U.S. in a blend of wool and silk. scottgroupstudio.com



CLARK HALL
IRON DOORS & WINDOWS



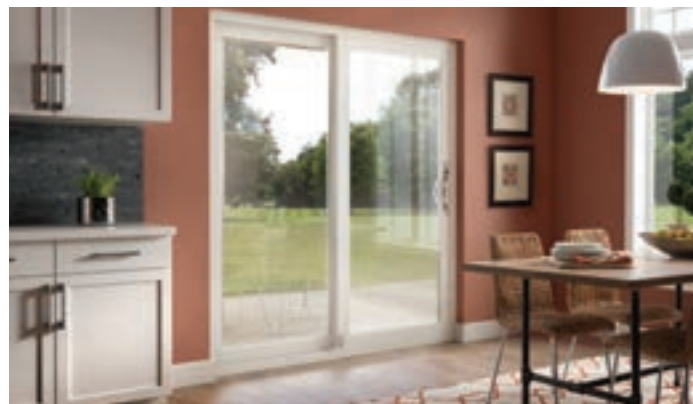
Available for Replacement & New Construction at These Fine Dealers

Architectural Window Supply
410-266-5254
Annapolis, Maryland

Hodges Windows & Doors
703-532-0184
Falls Church, Virginia • Ashburn, Virginia

Tart Lumber
703-450-5880
Sterling, Virginia

www.clarkhallirondoors.com



SLIDING DOORS

▲ Simonton Inovo vinyl patio doors boast a monorail system for smooth motion, a welded sill with a fiberglass overlay to withstand wear and tear from foot traffic, and a screen system that is top-hung to avoid obstructions. Buyers choose their preferred glass type, number of panels and frame color. simonton.com

FULL DECK

► Sustainable building-materials company Cali Bamboo has launched a line of interlocking deck tiles made of an easy-to-clean, non-skid, splinter-free bamboo composite (60-percent bamboo fiber and 40 percent recycled plastic). The tiles come in four colors—slate (pictured), coffee, caramel and charcoal—and in a matte finish. calibamboo.com

TEA TIME

▲ Conceived by DesignCorporate for Poltrona Frau, the Chado rug weaves delicate bamboo silk and thick linen threads to create a textured surface. Named for the Japanese word meaning “tea ceremony,” the rug’s rectilinear motif is inspired by the grated windows and muted light found in Japanese teahouses. Hand-knotted in India in five hues, including Copper (pictured). At Poltrona Frau in DC. poltronafrau.com



WEATHER SHIELD®

WINDOWS & DOORS



Image featuring Weather Shield's Contemporary Collection Hinged Door and Casement Windows with Black Poly Paint

Make a statement with striking elegance

Weather Shield's Contemporary Collection™ feature windows and doors with a seamless, modern aesthetic that have been flawlessly engineered and painstakingly crafted for those who reject compromise. This innovative collection is intended specifically to enhance the expansive views of custom, high-end homes.



When your goal is to explore the boundaries of design, these windows and doors are up for the challenge.

Learn more about our expansive offering by visiting one of our showrooms:

Showroom Locations:

6700 Distribution Dr.
Beltsville, MD 20705

2820 Dorr Ave.
Fairfax, VA 22031

Proudly Serving the Washington DC Metro Area

For More Information: 800.301.6602 | www.qwdinc.com



CUTTING A RUG

▲ Textile company Under the Canopy recently debuted sustainable rugs spun out of EverStrand, a fiber derived from post-consumer plastic bottles. Made by U.S. rug manufacturer Mohawk, each five-by-eight-foot rug is created using about 250 recycled bottles. Pictured here, the Oslo Area Rug in Gray. underthecanopy.com

SUBTLE SHEEN

► Part of the Artisan Series by rug-design guru Ben Soleimani for RH Modern, the textured Palo Rug imposes abstract matte lines on a field of tonal color with a subtle sheen. Hand-woven from natural wool, silk and viscose, it comes in five sizes and two hues: silver (pictured) and ivory. rh.com



A COLORFUL YARN

▲ Eco-friendly Swedish design studio Kasthall has launched Harvest, a collection of vibrant rugs made entirely from residual spools of wool. These woven textiles offer a modern spin on the traditional Swedish rag rug, and come in a range of sizes and color-shifting hues. kasthall.com



KARPETKING *Design Center*

enrich your home



beautifully crafted carpets and rugs that reflect your *style.*

On the Horizon



Asymmetrical petals take shape on a soft, lustrous field in Stark's Radman carpet. Made from sustainable tencel and wool, this hand-tufted carpet has a slight shimmer in earthy tones. Available in broadloom format, it can be installed as a wall-to-wall carpet or cut and finished to any size.

What are the advantages of broadloom carpet?

As far as wall-to-wall carpet goes, broadloom muffles sound and makes a good insulator. Broadlooms can also be cut and finished into an area rug of any size.

But it's important to mention a recent, big improvement in the broadloom industry. Stark has been making rugs by hand in India and Nepal for years. We asked our weavers if, instead of the standard sizes, they could make rugs that are 15 feet wide by 75 or 80 feet long. They said yes—and we now have at least 75 lines of hand-loomed broadloom in our warehouses. So if a client wants a handmade rug

but needs it in an odd size, we can deliver it in two or three weeks, as opposed to five or six months. Stark was the forerunner of this development, but now a few other mills are doing it too.

—Tim Cohen, Stark Carpet

What rug styles are most popular today?

As a rug designer at Doris Leslie Blau in DC, I have found the most popular rugs to be a mix of contemporary and traditional designs in wool, wool-and-silk blends and organic materials. These rugs can transition into classical, historical or contemporary environments.

The most popular rugs have strong colors, abstract designs or pale, washed-out hues, and

they may or may not have borders. I find wool rugs are most requested due to their durability and easy cleaning.

I design wool-and-silk rugs for designers all over the world who are dealing with high-traffic living areas. I just completed a project in London using linen and silk on a spiral staircase. Sisal and jute are still major contenders in many contemporary projects. —Madeleine Mitchell, Doris Leslie Blau

How do the latest window technologies benefit consumers?

The latest developments in window/door technologies are advancements in solar protection in the glass and glazing processes. The state-of-the-art

technology—known as Dynamic, Switchable or, technically, Electrochromic glass—controls solar gain via a transparent conductor placed between glass panes that gradually darkens or lightens windows using an electric current. These windows can be manually tinted or controlled by an automation system.

This technology drastically reduces heat gain while the windows remain transparent, allowing homeowners to maintain a connection to the outdoors and reduce energy consumption without the use of shades or blinds. It should not be confused with privacy glass, which has no energy-saving function.

—Ken Clark, T.W. Perry

"Western Window Systems is in the right place and the right time, Everybody is after contemporary architecture and indoor-outdoor living. It's super-hot."
- John Sanders, The Sanders Company



Design Better

westernwindowssystems.com

Available through:



BALTIMORE
ANNAPOLIS
BETHESDA
800-394-6974
www.thesanderscompany.com



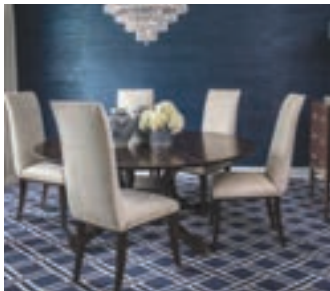
■ Carpet Creations & Collage Workroom

A full service showroom and custom workroom that collaborates with designers, architects, builders and their clients to assist with all their floor covering installation and fabrication requirements.
301-881-3399
carpetcreationsandflooring.com



■ Clark Hall Doors

Providing custom entry, patio and interior doors built to last. Maintenance free! Custom designs and oversize entries are their specialty.
703-447-5482
clarkhallirondoors.com



■ Floor Rio Abbey

Floor Rio Abbey are experts in flooring and design to help you find the perfect floor for the way you live. We feature the area's most complete flooring selections and guarantee an enjoyable, worryfree experience.
301 921-6611
floorrioabbeycarpets.com



■ Karpet King Design Center

Serving Montgomery County and the greater Washington, DC market for over 40 years. Offering the area's largest selection of top-quality carpeting, custom sisals, hardwoods, resilient flooring and imported rugs.
301-770-4110
karpetkingdc.com



■ Kruper Flooring Solutions

Hardwood floor, carpet, tile, countertops, historic restoration. True professionals. 100% guarantee of your satisfaction. Ask any of their clients.
703-731-6183
kruperflooring.com



■ Loewen Window Center of Bethesda

For luxury homeowners—and the architects, designers and custom builders who create their dreams—Loewen is the brand that delivers an extensive line of douglas fir and mahogany windows and doors.
301-215-9195
loewenwindowsofmidatlantic.com



■ Marvin Windows and Doors

Marvin Windows and Doors are made to order, one at a time. An unparalleled value, Marvin offers craftsman-quality construction, energy-efficient technology and the most extensive selection of shapes, styles, sizes and options.
888-537-7828
marvin.com



■ Quality Window & Door, Inc.

Providing customers a first-class experience representing industry leading manufacturers. They deliver professionalism, expertise and service.
800-301-6602
qwdinc.com



■ **Stark**

Stark introduces the Sapphire Collection. Representing a continued collaboration with the world's most talented rug artisans, as well as commitment to the beauty, individuality and vitality of the hand-knotted rug. 212-752-9000 starkcarpet.com



■ **Upstate Door**

Upstate Door builds-to-spec distinctive exterior, interior and screen/storm doors selected from the finest hardwoods. Their high-quality construction and expert craftsmanship give you a distinctive product that is built to last. 800-570-8283 upstatedoor.com



■ **Window Decor**

Window Decor is a family-owned business serving the Washington, D.C. area since 1987. Visit their beautiful showroom, featuring full-size, interactive displays of the latest Hunter Douglas window fashions. They also offer custom drapery and upholstery services and carry a wide array of fabrics for all your window design needs! 703-352-2588 windowdecor.us

Visit HomeAndDesign.com for the finest in high-end flooring.



26 Industrial Street Warsaw, NY 14569
800.570.8283 | 585.786.3880 | www.UpstateDoor.com

Call Our Door Experts Today!

New customer? Mention promo code HDUD2017 for a discount on your first order!



SKIP SROKA, CID, ASID | Sroka Design Incorporated

Construction Specification • Project Management • Turn Key Interiors

202.734.3920 | srokadesign.com



interior design

Strong Statement

Homeowners in Baltimore County hired Stephanie Gamble to update the interiors of their abode, a task that included revamping the lackluster living room. Gamble created “a very clean, modern, yet classic space,” she says, where her clients could entertain family and friends.



THEN

The living room was forgettable, with dilapidated floors and a lack of architectural detail. Ineffective recessed lighting made the room dim.

Despite the fireplace, with its boring surround, the room felt like it needed a focal point.

In its previous iteration, the room was informal, which didn't fit the owners' vision of it as a space for entertaining.

NOW

Gamble refinished the floors and painted the walls light beige, punctuated by cream-colored trim. Draperies allow for maximum light.

The fireplace wall provides a strong focal point, with a new surround embellished with crisp molding and a dramatic painting above it by Michael Carson.

Simple but elegant furnishings include a Thibaut sofa and Hickory Chair chairs. Hickory White cabinets flank the fireplace; cream-painted interiors lighten them visually.

Interior Design: Stephanie Gamble, Stephanie Gamble Interiors, Baltimore, Maryland. Photography: Jennifer Hughes.



SROKA DESIGN 202-734-3920 | srokadesign.com

Construction Specification • Project Management • Turn Key Interiors

Layered Luxe

In a Northwest DC home, Marika Meyer seamlessly melds color, texture and patterns galore

A client who was not afraid of going bold in her interiors inspired Marika Meyer's design for the dining room and sunroom of a home under renovation in the Palisades. Because the spaces are adjacent to one another with a large opening in between, Meyer knew they would have to relate visually. Her client "had a keen sense of color and knew what she liked," the designer says. After falling in love with a strong Bruntschwig & Fils jacquard in red and rust—ultimately used for throw pillows in the sunroom—they selected vibrant motifs for both rooms. "We had fun layering pattern on pattern," Meyer recalls.

The dining room walls are covered in rust-hued grass cloth by Thibaut, with a rug from Galleria Carpets in an ikat pattern that Meyer and her client customized for color and weave; even the dining-chair fabric has a custom colorway selected to fit the room. "There were so many opportunities for customization on this project," observes Meyer. "That's part of its success."

In the sunroom, a neutral rug allows for a lively mix of fabrics. A Chinoiserie dragon pattern by Jim Thompson on one armchair works with a flame-stitch pattern by Bruntschwig on another. A cream-colored Cowtan & Tout sofa provides a backdrop for pillows in the rust-hued jacquard as well as geometrics by Bruntschwig & Fils. Drapes and a fabric ceiling cover, both by Barry Dixon for Vervain, lend warmth and coziness to the room.

To furnish both spaces, Meyer sourced antiques as far afield as Texas. Above the custom dining table by Bausman and Minton Spidell chairs from Michael-Cleary, the Visual Comfort chandelier is both simple and elegant.



Interior Design: Marika Meyer, Marika Meyer Interiors, Bethesda, Maryland. Photography: Angie Seckinger.



MARIKA MEYER'S TRADE SECRETS

- Clients often think antiques will be stodgy. But you can find ones that feel current and they can add a moment of individuality to a space.
- Never be afraid to express yourself through color, pattern and texture, but use neutral elements for balance.
- Sourcing materials from different places will create variety. And try to think outside the box; we used an antique console instead of a sideboard. This method also helps achieve high-low price points.
- Think creatively when there's an odd architectural element. The ceiling in the sunroom was oddly angular. Instead of trying to make it disappear, we covered it in fabric and made it an asset.

Sitting Pretty *tony accent chairs add flair*



1



2



3



4



5



6



7



8



9

1/ Metropolitan. Design by Jeffrey Bernett; oak and metal swivel chair; from \$3,350. bebitalia.com **2/** Harry. Design by Eric Jourdan; metal and polyurethane foam; from \$2,775. ligne-roset.com **3/** Dali Chair. Leather with metal legs, reverse tufting; \$5,175. nafurniture.com **4/** Emile Chair. Acrylic and leather; \$2,488. blisshome.com **5/** Andes Armchair. Emerald velvet, brass legs; \$3,080. brabbu.com **6/** Verso Club Chair. Chromed steel and leather; \$3,650 excluding upholstery. donghia.com **7/** Costero. Natural cane and oak, shown with white-linen upholstery; from \$2,250. maggiecruzdesign.com **8/** Alex Armchair. Wood and leather; \$4,464. hugueschevalier.com **9/** Lexi Slipper Chair. Wood and fabric or leather; \$2,385. jessicacharles.com



KRISTINPEAKE
INTERIORS

WWW.KRISTINPEAKEINTERIORS.COM
T: 301.545.0441 | F: 301.545.0442

Animal House *playful prints with a wild side*



1



2



3



4



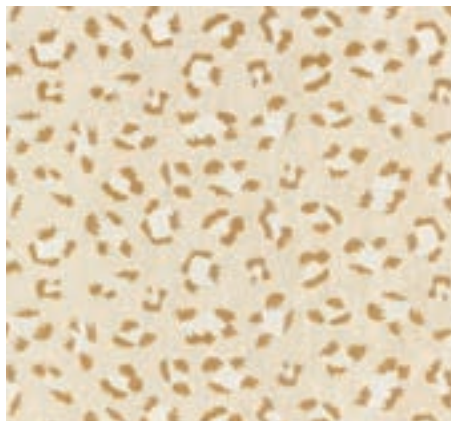
5



6



7



8



9

1/ Bugskin. Linen and rayon blend; \$218/yard. sharris.com **2/** Vineyard. Cotton and linen blend; \$85/yard. duralee.com **3/** Tiger. Bella Dura technical fabric; \$132.50/yard. fabriccut.com **4/** African Leopard. Cotton and linen blend; \$96/yard. thibautdesign.com **5/** Mille Fleur. Linen; price to the trade. leejofa.com **6/** Gazelle. Cotton and rayon blend; \$188/yard. stroheim.com **7/** 03342. Cotton; \$37.50/yard. trend-fabrics.com **8/** Broderie Leopard. Cotton, polyester and viscose blend; \$209.25/yard. scalamandre.com **9/** La Farfalla Carnival. Linen; \$168/yard. vervain.com



PAULA GRACE DESIGNS

Interior Design Services



SIGNATURE GRACE™

BY

PAULA GRACE DESIGNS

WWW.PAULAGRACEDESIGNS.COM ♦ 703.201.1490

Furniture Showroom:

Atrium Interiors - Tysons Galleria 2001 International Drive, 3rd floor, McLean, Virginia



*In-showroom consultations available with Paula Grace by appointment ♦ Please call 703-201-1490 to schedule

Decoration + Design



Charles C. Almonte designed a sophisticated club room for a condo in Arlington, emphasizing textured fabrics, dark-stained woodwork and strong architectural elements. Photo by Carl Hutzler.

What are common mistakes to avoid when working with a designer?

Open communication is critical when working with a designer, in order to achieve a highly personalized design that represents your tastes, interests and lifestyle. I've actually heard this: "I'd like to see what you come up with before I tell you what I like." That's a mistake. We work together in partnership to create your home. You, the homeowner, need to be seen, heard and understood from the start. That's how you get the home of your dreams.

Another mistake is not being realistic. I've also heard from clients: "I saw on TV that a kitchen renovation can be done for \$10,000." What we see on television is not real

life. It's very entertaining, but it's just that—entertainment. An experienced designer will help you understand the real costs involved in accomplishing your goals. —*Paula Grace Halewski, Paula Grace Designs, Inc.; Signature Grace Furnishings*

What fun trends are you seeing in wallpaper and fabric?

2017 would have been Frank Lloyd Wright's 150th birthday, and this fun fact has inspired a number of Wright-related trends. While MoMA is doing a retrospective, Schumacher has reissued a collection of fabrics Wright designed in 1955. Characterized by overlapping squares and triangles in primary blues, reds and yellows, the patterns are reminiscent of the Southwest influences that surround his Taliesin West

studio. For a more contemporary vibe, a few have been released in neutral beiges and grays.

More generally, I am seeing a movement in fabric towards drippy, streaky patterns resembling abstract watercolors, often in deep colors such as indigo and black. These patterns have evolved from ikats, but are more elegantly free-flowing. The patterns are showing up in fabrics, wallpapers and even rugs. My current favorite is Norrland by Villa Nova. —*Charles C. Almonte, AIA, ASID, Charles Almonte Architecture | Interior Design*

How do I determine a realistic budget for my project?

To build a realistic budget, consider all the elements from floor to ceiling. Be specific and realistic. Decide where you are willing to splurge and

where you need to save. Can you repurpose existing furnishings? Consider the quality and workmanship of new furniture. Do you want customized pieces? Is provenance important?

We work with our clients to identify their style and comfort level with various price points, then build a budget based on the scope of the project. It is important to be straightforward about the amount of money you are comfortable spending; we can help you determine where to invest and where you may be able to save money and avoid costly mistakes. When our work is done, all we want you to think about is how you are going to enjoy your beautiful home.

—*Lisa Merman, Whittington Design Studio*

BARBARA HAWTHORN
Interiors LTD.



Photos by Kenneth M. Wyner Photography



Photos by Kenneth M. Wyner Photography

McLean, Virginia

703-241-5588 | www.barbarahawthorninteriors.com

All in the Details

PERFECT PALETTE

► Romo has updated its versatile Linara collection, which now boasts a total of 360 shades in eight eye-catching color families. The practical cotton-linen blend has a soft, brushed finish and is washable in warm water. The Pink Serenity family (pictured) bathes interiors in chalky shades of rose and dusky pink. romo.com



WORLDLY MIX

▲ The new Oscar de la Renta III fabric and wallpaper line is a collaboration between Lee Jofa and the iconic fashion house. Its prints, weaves and jacquards celebrate the late designer's love of textiles he discovered around the globe, from Indian block prints to florals that evoke the colonial-style homes of his native Dominican Republic. At Lee Jofa in the Washington Design Center; leejofa.com



INTERIOR CONCEPTS INCORPORATED

A FULL SERVICE DESIGN FIRM

2560 RIVA ROAD ANNAPOLIS, MARYLAND
410.224.7366 | 301.970.8009

INTERIORCONCEPTSINC.COM

Let Us Design Your Story

Interior Architecture
Residential | Commercial
TOBE DesignGroup
301.656.4400 | www.tobedesigngroup.com

houzz 2014 SERVICE
houzz 2015 SERVICE
houzz 2017 SERVICE
BEST OF Houzz 2017

Stone Sculpture

Visit the
Sculpture Garden
and Gallery
at
Alden Farms
19215 Beallsville Rd
Beallsville, MD
(open by appt/chance)

David Therriault, pet
301-367-3879

MILLING ROAD

THE DARRYL CARTER COLLECTION

Baker Furniture 3330 M Street NW, Washington, DC 20007 202.342.7080



Fitzsimmons
Design Associates Inc.

410-269-1965



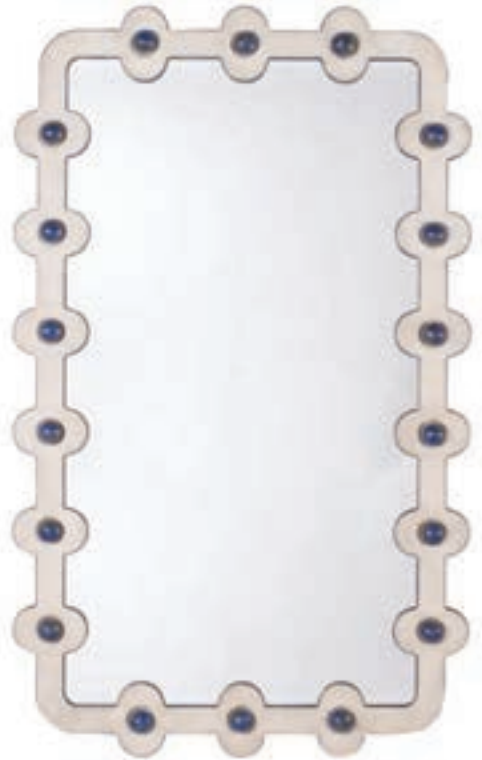
We Specialize in Waterfront Home Design, 75% of our clients live on the water. We create relaxed coastal interiors that withstand the test of time!

fitzsimmonsdesign.com



MOD MIRROR

▼ Created in partnership with New York design firm Tilton Fenwick, Niermann Weeks's Lapis Wave Mirror makes a bold statement. Standing at 39 by 64 inches, the transitional piece has a frame finished in Plaster White, with faux lapis accents. Through J. Lambeth in the Washington Design Center. niermannweeks.com



WARM PATINA

▲ Designed by Bina & Robinson, RH Modern's Calvin 4-Door Sideboard imparts a contemporary edge. Made of American white oak veneer that's been sandblasted and waxed to create a warm patina, it's built with mortise-and-tenon joinery. Shown in gray oak with hardware in a brushed-pewter finish; also available in brown oak with burnished brass. rhmodern.com



ITALIAN STYLE

◀ Mauro Lipparini's Clio chair for Natuzzi Italia conveys a sculptural sensibility with the embracing curve of its back. Its metal frame (available in eight finishes) can be covered in an array of leather (pictured), hide or fabric options. It makes a perfect dining chair but can also serve as occasional seating in any space. natuzzi.com



TOUCH OF ELEGANCE

▲ The shimmering silk-mix fabrics in Villa Nova's Shimla collection add a touch of glamour. The 65 colorways run the spectrum from vibrant reds and pinks to cool blues and opalescent neutrals. Shades on the draperies shown above (left to right) are Cobble, Adriatic, Pecan and Aquatic. Available through Romo in the Washington Design Center; villanova.co.uk



HALEH
DESIGN
ARCHITECTURE & INTERIORS



SUPREME ELEGANCE BEGINS WITH COMFORT, THE MOST IMPORTANT DESIGN ELEMENT OF ALL. - HALEH ALEMZADEH NIROO

LUXURY DESIGN | REFINED DETAIL

GIFTSHOP | THE GIFT OF LUXURY | GIFTS FOR EVERY OCCASION

HALEH DESIGN

POTOMAC MARYLAND

301 767 0034

HALEHDESIGN.COM



GRACEFUL CURVE

◀ Inspired by the evocative shape of a shell, N. Nasrallah and C. Horner designed Ligne Roset's Desdémone bed with a curving, upholstered headboard that comfortably supports users watching TV or reading. Available in king and queen sizes at Ligne Roset in Washington. ligneroseet-dc.com

TIME OUT

▶ The artisanal Pennsylvania-based furniture maker Konekt designed the sculptural Pause Chaise Lounge to encourage users to indulge in some downtime. The frame is handcrafted and its upholstery is hand-stitched; leg options include solid brass, plated copper, chrome, nickel or black nickel in a polished or brushed finish. konektfurniture.com



OLAMAR
INTERIORS

9595 Scales Place
Bristow, VA 20136
Phone: 571-239-8845
Web: olamarinteriors.com

TRADITIONAL | ECLECTIC | TRANSITIONAL | MODERN



Melissa Broffman
INTERIOR DESIGN
703.536.5409
melissabroffmaninteriors.com

ALLIED MEMBER ASID

PHOTOS: JESSIE VONDER



ODE TO TRAVEL

▲ Made in the U.K., Andrew Martin's new Expedition fabric collection for Kravet was inspired by a global spirit of adventure. Its light and airy kilims, ikats and animal prints range from soft blue and gray colorways to vibrant pinks and calming neutrals (shown above on pillows and fabric wall). At Kravet in the Washington Design Center. kravet.com

HOLLYWOOD DRAMA

▼ Taylor King, a North Carolina-based furniture company, has introduced a "Taylor Made" program that allows consumers to customize benches and ottomans, selecting size, shape, leg style and detailing. The octagonal Hepburn ottoman (pictured) is tufted, with trim that resembles gift bows. taylorking.com



Samantha Friedman Interior Designs, LLC

A Full Service Interior Design Firm
301.529.1900 | SAMANTHAFRIEDMANINTERIORS.COM
WASHINGTON, MARYLAND, VIRGINIA



WE DO DESIGN

Bountiful
INTERIORS

FURNITURE • GIFTS

The Eastern Shore's premier home furnishings store and interior design firm

EASTON
410-819-8666

WWW.BOUNTIFULDECOR.COM

POTOMAC
410-763-8500

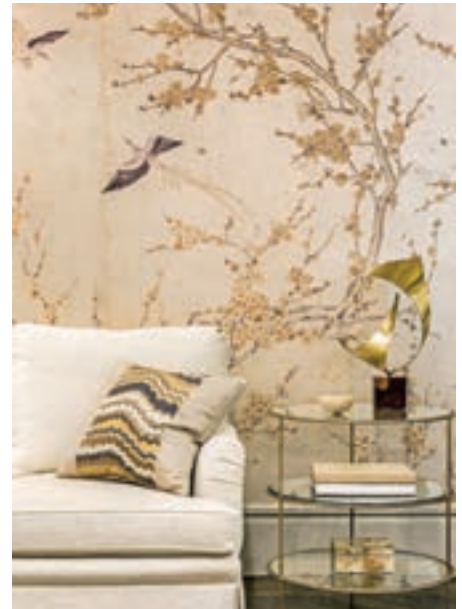
TALBOTTOWN • 218 N. WASHINGTON ST. • EASTON, MD • 410.819.8666

Rockville
Est. 1971
INTERIORS

Drapery Reupholstery Pillows Fabrics

5414 Randolph Rd. Rockville 20852
Visit Showroom Mon-Sat 8AM-6PM • 301-830-6447
www.RockvilleInteriors.com

interior design



ASIAN LORE

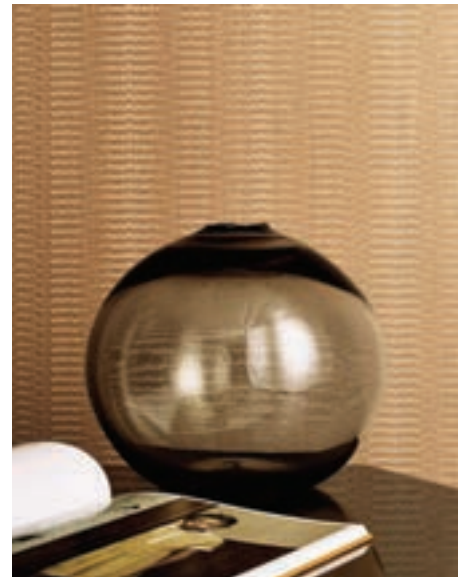
▲ Brunschwig & Fil's D'Arts wallpapers are digital reproductions of original works hand-painted by artists versed in Chinese lore. The collection consists of four themed books with 44 designs in all. Xanadu (pictured), with its plum blossoms and flying pheasants, evokes an 18th-century interpretation of traditional Chinoiserie. At Brunschwig & Fil's in the Washington Design Center. brunschwig.com



TAKING *Interiors* TO A NEW LEVEL



90dbdesign.com



LONDON CALLING

▲ Wolf-Gordon has unveiled its London Chic Type II wall coverings, which echo the British capital's rich cultural mélange. One of seven patterns in the collection, Belgravia combines detailed linework and shimmering metallics. It comes in nine colorways, including Rose Gold, pictured. wolf-gordon.com

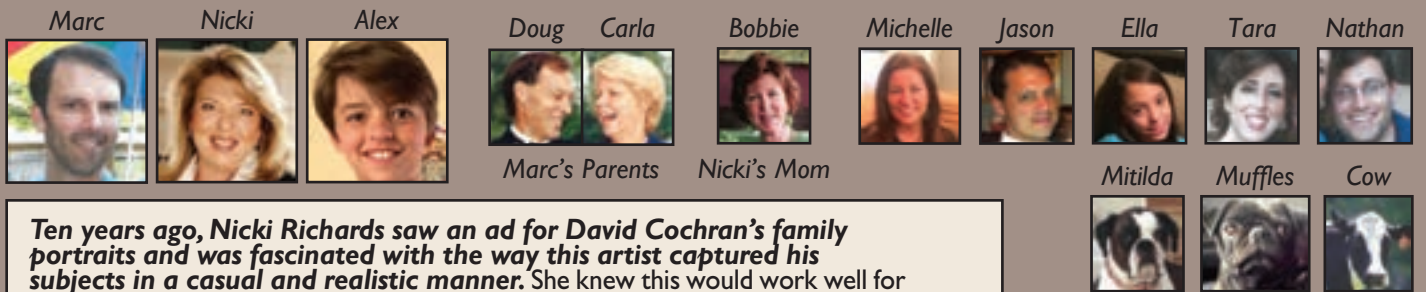
A Different Kind of Family Portrait



"The Richards Family"

4ft x 7ft

acrylic on canvas



Ten years ago, Nicki Richards saw an ad for David Cochran's family portraits and was fascinated with the way this artist captured his subjects in a casual and realistic manner. She knew this would work well for her good-natured family but she didn't have a perfect spot to display such a painting. This changed when she and her husband, Marc, decided on a major renovation of their bar and game room area. They created a perfect wall for a Cochran painting. Soon after, she met David at the Leukemia Ball Auction in Washington, DC and invited him to their Ashburn home to view the space and determine an appropriate size.

The Richards learned that the artist uses the client's own snapshots as his resource (NO Sittings!), and that he consults with his clients to establish a personalized background. They also learned that he could include as many portraits as a client desired. David scoured through a stack of photos and sketched out an idea on the spot. Nicki (Realtor with Keller Williams, Loudoun) and Marc loved the concept. The timeline and price seemed reasonable, so they confirmed the commission that very evening.

The background includes Marc's old family farm along with parents, siblings and their families. Of course, Nicki included her beloved Pugs and Boxers too. Their son, Alex, is front and center along with his signature Fedora and thumbs-up gesture. Nicki and Marc's wedding portrait is included, along with college logos and other personal images.

Giclée prints were made of this painting and given to various family members.

The Perfect Anniversary Gift



This 4ft x 7ft acrylic painting is showcased in their open Pub Room, setting a warm and inviting mood full of family, friends and memories.

Call or Email David with your questions or ideas.
 Email: cochranstudios@aol.com Studio: 703.684.7855
 Web: www.davidcochran.com



■ **90 Decibels**

Their 20+ years' experience in creating captivating interiors has earned rave reviews. They expertly reflect your personal style in a beautiful space with furniture, fabrics, and accessories tailor-made for you.
703-403-6195
90dbdesign.com



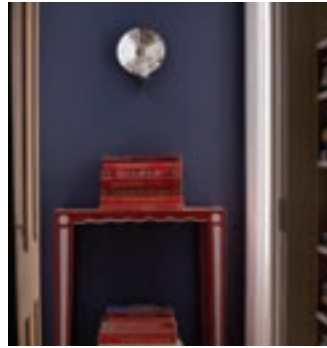
■ **Aspen Green Gasworks**

Aspen Green sells the top brands in the industry which they install with their team of licensed gas contractors. They are expert fireplace service technicians with years of experience.
703-657-0477
aspengreengasworks.com



■ **Barbara Hawthorn Interiors, Ltd.**

Creating functional opulence since 1984. Complete residential and commercial design—people, party and pet friendly! Recognized consistently as one of the area's best designers. Featured on HGTV and in national and regional publications. From historic to modern, they do it all.
703-241-5588
barbarahawthorninteriors.com



■ **Benjamin Moore**

Founded in 1883, Benjamin Moore is North America's favorite paint, color and coatings brand. A leading manufacturer of premium quality residential and commercial coatings, Benjamin Moore maintains a relentless commitment to innovation and sustainable manufacturing practices.
benjaminmoore.com



■ **Bountiful Interiors**

Bountiful Interiors is a nationally recognized home furnishings store and design firm. Their five designers work throughout the Washington DC metropolitan region and have been featured in prominent national publications.
410-819-8666
bountifuldecor.com



■ **Cochran Studios**

Commissioned family portraits, including many characters or just one, in settings envisioned by the client and artist. Call him with your ideas! The perfect gift for special occasions.
703-684-7855
davidcochran.com



■ **David Therriault Stone Sculpture**

David's stone sculpture stands the test of time in defining your garden or interior space. Find your piece in the Sculpture Garden and Gallery at Alden Farms in Beallsville, MD.
301-367-3879
davidtherriault.net



■ **Fitzsimmons Design Associates, Inc.**

Fitzsimmons Design specializes in designing waterfront homes. 75% of their clients live on the water. Let them furnish your home with a tailored, classic and relaxed coastal look.
410-269-1965
fitzsimmonsdesign.com



GREEN FRONT
FURNITURE

HICKORY CHAIR, HENREDON, HANCOCK & MOORE, THEODORE ALEXANDER,
SHERRILL, TAYLOR KING, JESSICA CHARLES, HARDEN, MOTIONCRAFT, BERNHARDT

ONE OF THE NATION'S TOP FURNITURE RETAILERS
QUALITY FURNITURE, ACCESSORIES & ORIENTAL RUGS AT DISCOUNT PRICES

Discover what your designer already knows

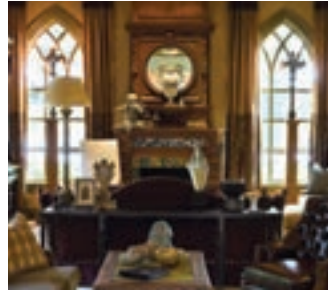
10154 HARRY J. PARRISH BLVD
MANASSAS VA 20109
703.396.8560
NEXT TO MANASSAS AIRPORT

316 NORTH MAIN STREET
FARMVILLE VA 23901
434.392.5943
OVER 1 MILLION SQUARE FEET UNDER ROOF

GREENFRONT.COM



■ **Haleh Design, Inc.**
 During her 25-year career, Haleh has become a trusted voice on grand interior and exterior spaces. She creates turnkey programs for magnificent homes that speak of restraint and elegance.
 301-767-0034
halehdesigninc.com



■ **Interior Concepts Inc.**
 Interior Concepts and its talented senior designers create a broad spectrum of design from well-appointed family homes, beach homes, mountain retreats and large flats to estates in some of the most prestigious addresses.
 410-224-7366
interiorconceptsinc.com



■ **Kristin Peake Interiors**
 Integrity, passion and creativity help them connect with their clients and families. They believe that family creates home, and home is the fabric of life.
 301-545-0441
kristinpeakeinteriors.com



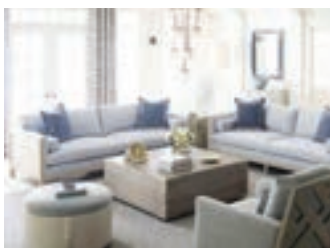
■ **Melissa Broffman Interior Design**
 Melissa captures a one-of-a-kind look for clients, beyond the sameness of today's home furnishings market. Whether the goal is traditional, eclectic or modern, this design firm specializes in interiors with style, comfort and timeless appeal.
melissabroffmaninteriors.com



■ **Olamar Interiors, LLC**
 It starts and ends with listening. They believe that careful listening and clear communication are the keys to ensuring your design experience will not just meet your expectation; it will leave you dazzled.
 571-239-8845
olamarinteriors.com



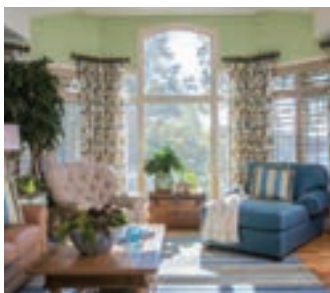
■ **Paula Grace Designs, Inc.**
 Paula Grace Designs creates relevant, classic, chic, comfortable interiors and furnishings attuned to your feelings, needs and style. When working with them, implementation is stress-free with brilliantly blissful end results.
 703-201-1490
paulagracedesigns.com



■ **Rockville Interiors**
 Everything to make your home beautiful - reupholstery, slipcovers, custom window treatments and more. Visit their showroom to view the carefully curated selection of fine fabrics, wallpaper, drapery hardware and motorized window shades. Consult with one of their designers.
 301-830-8565
rockvilleinteriors.com



■ **Samantha Friedman Interiors**
 Samantha Friedman Interior Designs creates "livable designs" offering creative and luxurious solutions to clients needs. She uses colors, patterns and textures to make each home a reflection of the family that lives in it.
 301-529-1900
samanthafriedmaninteriors.com



■ **Sew Beautiful**
 For home owners and design professionals, Sew Beautiful is your expert resource for exceptional custom window treatments and soft furnishings for the home.
 410-544-3300
sewbeautifulwindows.com



■ **Sroka Design**
 Sroka Design helps people have fulfilling lives with the power of design, providing something special: a place called home. Experience the difference. Construction specification, project management, millwork, tile and cabinetry design, furnishings and turn key interiors.
 202-734-3920
srokadesign.com



■ **Susan Gulick Interiors**

A passion for color, art and confident clean lines. The wonderfully livable homes of Susan Gulick...homes that reveal the vision of a gifted designer. A woman who understands the power of easygoing elegance, bringing this philosophy to life.
703-674-0332
susangulickinteriors.com



■ **TOBE Design Group**

For 20+ years, TOBE has collaborated with clients, both residential and commercial, drawing inspiration that blends their personality with style and function for a contemporary and environmentally conscious solution.
301-656-6600
tobedesigngroup.com



■ **Washingtonian Interiors**

With over 50 years of combined design experience, Washingtonian Interiors is a local full service interior design firm with a storefront to help you with all your design and renovation needs.
703-207-0000
washinteriors.com



Visit HomeAndDesign.com
for the best in fine
furnishings and
luxurious interiors.

Sew Beautiful

Custom Window Treatments and more

*Challenging Windows.
Beautiful Results.*

Custom Window Treatments,
Bedding, Cushions, Upholstery ...
and Your **LOCAL SOURCE** for



*Serving Home Owners & Design Professionals
in the Greater Annapolis Area*



410-544-3300 • www.sewbeautifulwindows.com



■ **Baker**

Since its founding in 1890, Baker has been the hallmark of design excellence and uncompromising quality. Baker is distributed worldwide through a network of interior design trade showrooms and luxury home furnishings retailers.

202-342-7080
bakerfurniture.com



■ **Brass Beds of Virginia**

The BEST Iron and Brass Beds in the world, made in Richmond, VA with custom adjustments and over 40 designer finishes, guaranteed for a century! 4-5 week delivery. Look at every detail. There is just no comparison!

800-409-0340
brassbedofva.com



■ **Chelsea Fine Furnishings**

Chelsea Fine Furnishings, a family business, believes that furniture not only ornaments a house but is a must in making it feel like home. They are committed to supplying clients with quality furniture and friendly services, at affordable prices.

703-430-6700
chelseafinefurnishings.com



■ **Greenfront Furniture**

Featuring the area's largest selection of top-quality furniture and oriental rugs. Buy directly from their massive showrooms or order from names like Hancock & Moore, Sharrill, Henredon, Hickory Chair and Bernhardt.

703-396-8560
greenfront.com



"We dare you to find a better bed!"

CUSTOM MADE BRASS AND IRON BEDS
HALF PRICE SHIPPING IF ORDERED BY DEC 31, 2017
WITH COUPON: HD123117



OVER 40 ARTISANAL FINISHES TO CHOOSE FROM!

WWW.BRASSBEDOFVA.COM (800) 409-0340



■ **Michael-Cleary**

The Michael-Cleary Showroom has been working with the DC and Chicago design communities for over 27 years offering furniture, fabric, wallcovering, lighting and accessories. Located in the Washington Design Center.

202-488-9787
michaelclearyllc.com



■ **Sheffield Furniture & Interiors**

For over 60 years, Sheffield Furniture & Interiors has continued to provide the finest furniture brands, fabrics and design services. Visit today to unlock the potential of your home's decor.

301-881-6010
sheffieldfurniture.com



Brilliant, Rich, Everlasting Color

Our most premium paint, engineered to deliver unrivaled color quality and exceptional coverage in fewer coats.



Paint Like No Other®

Visit your local Benjamin Moore store today.

©2016 Benjamin Moore & Co. Aura, Benjamin Moore, Color Lock, Green Promise, Paint like no other, and the triangle "M" symbol are registered trademarks licensed to Benjamin Moore & Co.

Washingtonian Interiors

About Us

We are an Interior Design firm that provides comprehensive personalized services ranging from custom pillows to kitchen remodeling.

- Kitchen & Bath
- Addition Remodeling
- Upholstery
- Custom Drapery
- Shutter
- In-home Consultation

Our in-house staff is here to service all your Interior Design needs!

The possibilities are endless

1317-A Chain Bridge Rd. Mclean, VA 22101
P. 703.207.0000 | www.washinteriors.com

Washingtonian Interiors

1317-A Chain Bridge Road McLean VA, 22101
703.207.0000 | sales@washinteriors.com



MONOGRAM

ADU

Appliance
Distributors
Unlimited

adu.com

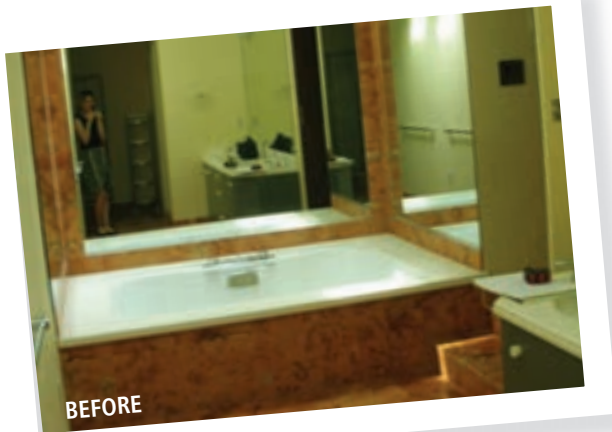
*Knowledge. . . Experience. . . Selection. . .
Inspiration. . . Tomorrow's Appliances Today*

SINCE 1982 | adu.com

Modern Makeover



The new owners of a home in McLean sought to upgrade their master bath, which was dated, dark and cramped. They turned to Case Design/Remodeling to transform the awkward space into a modern, spacious and airy retreat.



THEN

The bath was narrow with all of its components crammed together. An old built-in tub was wedged into a small space at one end of the room.

A dark wood vanity didn't offer much in the way of storage or useful surface area.

Dark wood and dingy reddish-brown tiles made the whole room look dim, despite skylights.

NOW

The design team borrowed space from a wet bar and closet in the adjacent master bedroom to enlarge the bath. A roomy shower occupies the once-cramped space that housed the tub.

Twin Ronbow vanities provide storage while a Jacuzzi soaking tub creates a focal point.

White vanities, marble tops and pale, wood-look porcelain floors are light and airy. A stacked-quartzite veneer on the wall behind the tub adds interest.

Renovation Design: Jim Wrenn, project developer; Loren Sanders, project manager; Kevin Shore, CKBD, architectural designer; Elena Eskandari, CKBD, Allied ASID, bath designer, Case Design/Remodeling, Inc., Bethesda, Maryland, Falls Church, Virginia, and Washington, DC. Photography: Stacy Zarin Goldberg.



ENJOY UP TO
\$3,789
IN FREE APPLIANCES
WITH YOUR QUALIFYING
PURCHASE OF
ELIGIBLE
MONOGRAM
APPLIANCES

KNOWLEDGE | EXPERIENCE | SELECTION | INSPIRATION

Appliance Distributors Unlimited offers these qualities to anyone looking for modern kitchen appliances. Our Professional Appliance Associates have factory training, technical knowledge and years of experience to assist you in creating your dream kitchen.



FIND

MONOGRAM

at



Tomorrow's Appliances Today
Since 1982

Gaithersburg, MD | Takoma Park, MD | Baltimore, MD | York, PA | Chantilly, VA
240.650.6000 | 301.608.2600 | 410.789.8000 | 717.845.6500 | 703.263.2300

Bright & Airy

A kitchen by Studio Snaidero DC Metro combines form and function with minimalist style

A couple building a custom home in Arlington turned to Studio Snaidero DC Metro to create a warm, contemporary-style kitchen with plenty of storage and space for a family of five. The open plan encompasses the kitchen's work area, centered around an island, and a pantry tucked behind it that opens into the airy breakfast room.

Working with Snaidero's Shawna Dillon, the wife—who designed the home's interiors herself—opted for flat-fronted white cabinetry punctuated by rustic, gray-stained oak modules that prevent the space from looking too stark.

“The challenge was to provide solutions for cooking and food-storage needs while maintaining an open, streamlined feel,” says Dillon, who supplied storage in the pantry, breakfast area and island to ensure surfaces would remain uncluttered.

Silestone countertops and a complementary backsplash in Nara Basic Blanco tile from Porcelanosa keep the room crisp and bright. A niche in the work area contains a Miele gas cooktop and oven, while the Best hood maintains a low profile tucked within the niche's ceiling. A paneled Sub-Zero column fridge is concealed in the wall of cabinetry to one side, between the Miele microwave and convection ovens.

To suit the husband's more traditional sensibilities, Dillon selected glass-globe pendants over the island. In the breakfast area, an inset, exposed-wood ceiling is treated in rustic style and paired with an ultra-modern Moooi pendant. Calligaris counter stools, Eames-style chairs and a Saarinen Tulip Table from Design Within Reach enhance the contemporary vibe.

Architecture: Devereaux & Associates, McLean, Virginia. Kitchen Design: Shawna Dillon, NCIDQ, ASID, Studio Snaidero DC Metro, Alexandria, Virginia. Builder: Great Jones Developments, McLean, Virginia. Photography: Jennifer Hughes.





SHAWNA DILLON'S
TRADE SECRETS

- Using the same product lines for all the rooms will help ensure that everything wears at about the same rate.
- Varying finish options can help make the budget work across several rooms. For instance, a high-gloss lacquer can be combined with a more cost-effective gloss laminate.
- Show your designer your aesthetic using images. Discuss what does and does not work in your existing kitchen.
- The most successful projects happen when the client and designer collaborate closely. This partnership guarantees a space customized specifically for your needs/desires, while taking advantage of your designer's expertise.

Pulls with Punch *distinctive cabinet knobs*



1



2



3



4



5



6



7



8



9

1/ Petals. Resin, available in eight translucent colors; \$340/knob. hautedeco.com **2/** Primitive. Designed by Clodagh; hand-finished recycled aluminum; from \$21/knob. duverre.com **3/** Flute Large Top. Designed by Roger Thomas; bronze in Silicon Bronze Medium finish; from \$82/knob. rockymountainhardware.com **4/** Fallbrook Leather Knob. Hand-stitched Italian leather and hand-polished brass; \$260/knob. waterworks.com **5/** Step-03. Solid brass, finished in Satin Brass; \$90/knob. nest-studio-home.com **6/** Manor Knob. Walnut and metal; from \$64 per/knob. pushpullhardware.com; waterstreetbrass.com **7/** Devon Collection, Allington Knob. Zinc alloy in polished chrome; from \$8/knob. topknobs.com. **8/** Hadly by Elements. Metal in Satin Nickel; \$4.25/knob. hardwareresources.com **9/** Browning Round Knob. Zinc alloy in Champagne finish; \$11/knob. weaverhardware.com; atlashomewares.com

SMART & STYLISH AWARD WINNING KITCHEN DESIGNS

YOUR LOCATION FOR CREATION



Potomac, Maryland

Jack Rosen
CUSTOM KITCHENS, INC. **35 YEARS**
Since 1982

CULINARY | CLOSETS | HOME OFFICES | ENTERTAINMENT



www.RosenKitchens.com

Showroom: 12223 Nebel Street, Rockville | 240.292.7121

Voted best Kitchen Design Firm by the readers of Bethesda Magazine, 2011, 2016.



Spa Treatment *lavish tubs for leisure time*



1



2



3



4



5



6



7



8



9

1/ Lanercost Cast Iron French Bateau Clawfoot Tub. Patinated and lacquered copper; \$3,695. penhaglion.com **2/** Veil freestanding bath; cast resin in high-gloss finish; \$4,899. us.kohler.com **3/** Hammered Copper Wye Bateau Cast Iron Bath Tub. Hand-poured with textured dry-fit vitreous enamel; from \$19,450. drummonds-uk.com **4/** Eldon Tub. Design by Conran + Partners; volcanic limestone and resin; price on request. vandabaths.com **5/** BC 04 Cube Collection. Nonporous composite, high-gloss or matte finish; from \$6,605. wetstyle.ca **6/** Calma Bathtub. Marquina Taupe marble; price on request. stoneforest.com **7/** Boat. Acrylic; \$3,100. americh.com **8/** Samara. Natural stone; \$29,995. porcelanosa-usa.com **9/** Bellbrook Cast Iron Double-Slipper Mosaic Clawfoot Tub; handmade mosaic; \$3,499. signaturehardware.com

SOMETIMES THE BEST WAY TO VISUALIZE YOUR NEXT KITCHEN IS TO TOUCH, HEAR, AND TASTE IT.



Open drawers. Turn knobs. Light burners. Welcome to a showroom unlike any other—a dynamic space to test-drive appliances, take classes, and taste every delicious possibility.

SUB-ZERO **WOLF** by **FRETZ**
SHOWROOM

Cutting-Edge Finds

HEADY METALS

► Poggenpohl recently added 14 new metallic hues to its palette of chrome-plated, high-gloss cabinetry lacquers. Ranging from Diamond White to Champagne Gold and Petrol Green (pictured), the colors are available on the company's modern and conventional cabinet lines. At Poggenpohl in Georgetown and Chevy Chase. poggenpohl.com



M. TEIXEIRA SOAPSTONE

DOMESTIC AND IMPORTED SOAPSTONE FOR
RESIDENTIAL & COMMERCIAL APPLICATIONS



SOAPSTONES.COM • 703-665-2185
23585 OVERLAND DR. • UNIT 100 • STERLING, VA 20166



Like Us...
PIN US!

Come see what's **PIN-worthy**
from the pages of

HOME&DESIGN

2017 Kitchen & Bath Business Magazine National Design Contest Award-Winner



Photography by Bob Narod - Staging by Charlotte Safavi

“Custom one-piece shelves with LED lighting, handmade subway tile backsplash and inset cabinets with handcrafted imported English hardware set the tone for a classic look with a daring twist on a black and white color scheme.”

In Collaboration with Architect Matthew Fiehn of Barnes Vanze Architects, Inc.



JENNIFER GILMER
Kitchen & Bath, Ltd.

6935 Wisconsin Avenue, Chevy Chase, MD 20815 | 301-657-2500 | www.gilmerkitchens.com
Also serving the Eastern Shore and the beaches: Bethany, Fenwick and Rehoboth



NEWPORT BRASS.
Joffrey Collection

YOUR HOME SAYS A LOT ABOUT YOU.
WE'RE HERE TO LISTEN.

Your home is a reflection of you. Ferguson's product experts are here to listen to every detail of your vision, and we'll work alongside you and your designer, builder or remodeler to bring it to life. Request an appointment with us today.

FERGUSON[®]
Bath, Kitchen & Lighting Gallery

ALEXANDRIA
(703) 658-1000

ROCKVILLE
(301) 424-1393

CHANTILLY
(703) 375-5858

ANNAPOLIS
(410) 573-6612

FERGUSONSHOWROOMS.COM

©2017 Ferguson Enterprises, Inc. 0717 521346

kitchen + bath



BOWLED OVER

▲ Blanco's Quatrus R15 Apron Front Sink answers customer demand for single-bowl models in the popular farmhouse style. The sink boasts a large corner radius that makes it easy to clean and comes in three materials: stainless steel with a polished-satin finish (above), fireclay and Blanco's signature Silgranit, a granite composite available in eight colorways. blanco-germany.com



TECHNO TREND

▲ Ilve's new Techno Collection brings sleek, industrial style to the company's Majestic Collection of dual-fuel and gas ranges. Available in five sizes with single or double ovens, the ranges come in seven standard colors and more than 200 custom hues. Techno Collection models feature tubular-style handles, stainless-steel knobs and trim-less doors. ilveappliances.com




TOPS ON TOP

Cindy Crawford on Silestone Countertop



Color:
Eternal Calacatta Gold



Discover more on
silestoneusa.com
Follow Us   
@CosentinoUSA



On Top

A product designed by Cosentino®

COSENTINO CENTER WASHINGTON DC
22725 DULLES SUMMIT COURT / STERLING, VA / 703.437.6761

MARBLE SYSTEMS®

natural stone - porcelain - glass - terra cotta - decorative



fairfax showroom & slab yard:
2737 dorr avenue, fairfax, va 22031 p:703.204.1818

bethesda showroom:
6931 arlington rd suite c2, bethesda, md 20814 p:301.913.9113

www.marblesystems.com

product featured: studio mosaic collection

kitchen + bath



LET IT SLIDE

▲ Ruvati's 45-inch-long, two-tiered Workstation Sink brings a new level of functionality to the kitchen with accessories that slide on double-tiered tracks. It features two mahogany cutting boards that slide together to create extra counter space and can also double as trays. Other accessories include two stainless-steel colanders and a dish-drying rack. ruvati.com



SPA DAY

▲ Kohler's Sunstruck freestanding tub coddles bathers with ergonomic lumbar support at both ends. Made of acrylic, the oval-shaped basin is available in White or Biscuit and can hold up to 16 inches of water. In addition, the tub can be customized with a number of Kohler's hydrotherapy options—as well as a wireless music kit. kohler.com

One Name Says It All!

Michael Nash®

Custom New Homes • Additions • Extensions • Kitchens • Baths
Outdoor Living Spaces & Custom Porches • Custom Wine Cellars
Basements • Custom Closets

Michael Nash®

Design A Build & homes

The Ultimate in Luxury®

www.michael-nash.com • 8630-A Lee Highway, Fairfax VA 22031

Serving Northern Virginia Only

703-641-9800

By Appointment Only

A Michael Nash Company

TIGER EYE

GRANITE - MARBLE - QUARTZ
QUARTZITE - SEMI PRECIOUS

GRAMACO

www.gramaco.com/tigereye
8730-C Greenwood Place Savage MD 20763

kitchen + bath

ON A ROLL

▼ Crosswater London's new Arcade Bicycle basin puts a nostalgic spin on the bathroom sink. It incorporates a Pashley Hand-Built British Bicycle as a base, topped by a Crosswater basin on a walnut shelf. Available through W.T. Weaver in Georgetown. weaverhardware.com; crosswater-bathrooms.com



CHEF AT WORK

▼ Franke's stainless-steel Chef Center system takes kitchen organization to new heights. Available in 28- or 33-inch widths, it features two anti-microbial compartments that can be used as storage bins, wine buckets or composters. Add-on accessories include a cutting board, colander (pictured), draining board and strainer basket. franke.us



RISE AND SHINE

▲ The slim Sage LED bath light by Tech Lighting is a versatile addition to an efficient bathroom. The fully dimmable fixture can be hung horizontally or vertically and is available in 13-, 25- and 36-inch-long models. Finish options include light chrome and light-satin nickel. ferguson.com

*Setting the trend in
designer glass*



Bel Pre Glassworks, Inc.

*Custom shower enclosures, wall
mirrors, glass tabletops, antique
mirrors, painted glass and more.*

301-948-6003 | www.BelPreGlass.com




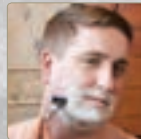


An Award
Winning Firm
With an exquisite
Tile & Custom Cabinetry
Collection

435 A&B East Diamond Avenue
Gaithersburg, Maryland 20877
240-361-9331
davidaskitchenandtiles.com

SHOWERLITE™ FOG-FREE SHOWER MIRROR

Installs Flush with the Tile Surround
Patented and UL/C-UL Listed
Luxurious LED Task/Accent Lights
Get the Best Shave Possible
Made in America 



SHAVE IN THE SHOWER

SHOWER YOURSELF IN LUXURY

TO ORDER, CALL 1.877.242.5327 OR VISIT WWW.CLEARMIRROR.COM



WE DWELL ON THE DETAILS
YOU DWELL IN THE DETAILS



PUSH
DECORATIVE
HANDRAIL
PULL

VISIT OUR SHOWROOM:
12156 NEBEL STREET
NORTH BETHESDA 20852
(240) 669-4130

MON-FRI:
10AM-5PM
SAT:
10AM-2PM

WWW.PUSHPULLHARDWARE.COM

BEST TILE®

S I N C E 1 9 5 6

Beautiful Rooms from Start to Finish

Evoque Porcelain

At Best Tile, we are with you every step of the way. Our design and technical experts will help you select the right products and create stunning rooms. Since 1956, homeowners, designers, builders and contractors alike have trusted Best Tile for beautiful products, inspired professional design, expert technical advice, and superior customer service. Come visit us to see the widest collection of quality ceramic, porcelain, glass and natural stone tiles on the East Coast.

    BestTile.com

ROCKVILLE, MD

11601 Boiling Brook Pkwy (301) 984-3399

COLUMBIA, MD

6822 Oak Hall Lane (410) 381-1169

LORTON, VA

8196 Terminal Road (703) 550-2352

RICHMOND, VA

7490 West Broad St. (804) 672-6316



■ **AAI Poggenpohl**

Discover what makes a Poggenpohl kitchen unique – from the exceptional workmanship and service to the thoughtful, innovative design touches that make the Poggenpohl difference. 301-657-8618 chevychase.poggenpohl.com



■ **Appliance Distributors Unlimited**

Knowledge, experience, selection and inspiration for anyone looking for modern kitchen appliances. Creating your dream kitchen with their experienced appliance associates couldn't be easier at ADU. 844-900-8600 adu.com



■ **B&F Ceramics Design Showroom, Inc.**

Family owned and operated tile and stone importer. Offering clients a variety of ceramic, porcelain, natural stone tiles, glass and now designer hardwood. Two retail showrooms; Fairfax and Fredericksburg, VA. 703-206-9111 bfceramics.com



■ **Bel Pre GlassWorks, Inc.**

A family-owned-and-operated company which provides a variety of specialized glass products including custom frameless shower enclosures, mirrors, painted glass and glass tabletops. 301-948-6003 belpreglass.com



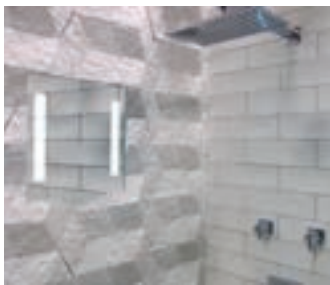
■ **Best Tile**

The premier destination for elegant floor and wall tiles in Washington D.C., Baltimore and Richmond. Best Tile is the Mid-Atlantic's largest importer of porcelain and stone tiles, offering professional in-store design assistance at no charge. 301-984-3399 besttile.com



■ **Caesarstone USA**

Caesarstone, pioneer of the first quartz countertops, continues to dominate the surface industry with innovations in color, style and endurance. Caesarstone blends beauty and function while delivering superior durability. 818-779-0999 caesarstoneus.com



■ **ClearMirror**

ClearMirror is the leading provider of permanent, patented fogless mirrors for luxury showers and vanities. Join the thousands of people who have experienced ClearMirror in the finest homes and hotels. Made in the USA. 877-242-5327 clearmirror.com



■ **Cosentino**

Cosentino is a global company that produces and distributes high value innovative surfaces for architecture and design. Silestone®, Dekton® and Sensa are the main brands of the group. 281-494-7277 cosentino.com



■ **David's Kitchen and Tiles**

For over 30 years, Davida Rodriguez has been creating beautiful kitchens, bath and tile designs for clients in the Maryland, Virginia and Washington, DC areas, personally overseeing projects from beginning to end. 240-361-9331 davidaskitchenandtiles.com



■ **Ferguson Bath, Kitchen, and Lighting Gallery**

Whether you're renovating an outdated bathroom or building your dream kitchen, Ferguson Bath, Kitchen & Lighting Gallery offers the best selection of products from today's most recognized brands. 301-424-1393 fergusonshowrooms.com

CABINET STORE KITCHEN & BATH DESIGN CENTER



WOODHARBOR
Custom Cabinetry

**Bring Your Home
to Life**

CABINETS BY WOODHARBOR EXCLUSIVELY AVAILABLE AT:

Fairfax, VA (703) 635-3767
Chantilly, VA (703) 349-4611
Rockville, MD (301) 798-5060
Houston, TX (713) 489-5522
The Woodlands, TX (281) 746-6141
Austin, TX (512) 948-3900

www.usacabinetstore.com



■ **Gramaco**

Gramaco is an importer of granite, marble, travertine and soapstone from across the globe. We have access to the finest stone quarries because of our long-standing relationships with the industry's most reputable suppliers.
240-456-0030
gramaco.com



■ **Hutchison Glass & Mirror, Inc.**

Since 1920, this family-owned-and-operated firm has taken pride in its fine craftsmanship. Glass design, fabrication and installation of custom mirrors and frameless shower enclosures. Experienced staff, quality products, edgework and beveling.
301-984-7500
hutchisonglassandmirror.com



■ **Jack Rosen Custom Kitchens**

Jack Rosen Custom Kitchens offers award-winning designs and fine cabinetry for culinary, closets, home offices and entertainment with outstanding service. Visit our showroom gallery for today's hottest trends!
240-292-7121
rosenkitchens.com



■ **Jennifer Gilmer Kitchen & Bath**

From its inception in 1997, Jennifer Gilmer Kitchen & Bath, Ltd., has earned a reputation for innovative, distinctive, luxurious kitchen and bath design, delivering quality products with exceptional service.
301-657-2500
gilmerkitchens.com



■ **Kitchen & Bath Studio's Inc.**

High end showroom, fine creative designers. No upfront design fees. Celebrating 25 years in business. Eco-friendly cabinets, Christiana, Crystal, Signature and Executive. Best of Houzz 2014, 15 and 16.
301-657-1636
kitchenbathstudios.com



■ **M. Teixeira Soapstone**

Offering the largest selection of imported and domestic soapstone. We ship nationwide and have showrooms in New Jersey, San Francisco, Denver and Washington, DC. Countertops, sinks, DIY and fireplaces. Residential and commercial clients.
703-665-2185
soapstones.com



■ **Marble Systems**

Marble Systems located in Fairfax and Bethesda offers sublime natural stone tile collections to the DC Metro Area. The company is a leading source for beautiful surfaces featuring natural stones, porcelain and glass, with a large slab yard in Fairfax.
703-204-1818
marblesystems.com



■ **Poggenpohl Georgetown**

Discover what makes a Poggenpohl kitchen unique – from the exceptional workmanship and service to the thoughtful, innovative design touches that make the Poggenpohl difference.
202-342-9111
washingtondc.poggenpohl.com



■ **Porcelanosa**

Porcelanosa has a luxurious selection of tile, bath, hardwood and kitchen collections, which are displayed throughout their showrooms. Visit your local Porcelanosa showroom today to bring your project to life!
240-290-1120
porcelanosa-usa.com



■ **Push Pull Decorative Hardware**

Decorative door and cabinet hardware can accentuate design in ways that are traditional or modern, subtle or outspoken. We dwell on the details, you dwell in the details.
240-669-4130
pushpullhardware.com

Dreaming
of a new kitchen...



Knowledgeable People.
Professional Design.
Expert Installation.

Cabinets, countertops, appliances, flooring,
lighting and the design expertise to do it right.
Let us help you create a kitchen or bathroom
that will bring your dream to life.

Reico
KITCHEN & BATH

www.reico.com

Visit one of our 22 showrooms located throughout Maryland, Virginia, North Carolina, Delaware and Pennsylvania

Annapolis, MD (410) 571-8400

Bethesda, MD (301) 654-6000

Chantilly, VA (703) 245-8950

Charlottesville, VA (434) 923-0400

Charlotte, NC (984) 222-6300

Chesapeake, VA (757) 564-4820

Elkridge, MD (410) 579-1774

Falls Church, VA (703) 748-0700

Frederick, MD (301) 631-0400

Fredericksburg, VA (540) 371-8005

King of Prussia, PA (610) 382-1137

Millsboro, DE (302) 223-9200

Raleigh, NC (919) 878-7744

Richmond, VA (804) 262-8389

Roanoke, VA (540) 375-6400

Southern Pines, NC (910) 693-0162

Springfield, VA (703) 914-4900

Timonium, MD (410) 776-2220

White Plains, MD (301) 638-0400

Williamsburg, VA (757) 564-4820

Wilmington, DE (302) 894-0400

Woodbridge, VA (703) 245-8900

SINCE 1920
Hutchison
 GLASS & MIRROR, INC.
**Distinctive Quality,
 Fabrication & Installation**
 Frameless Shower Enclosures
 Custom Mirrors | Beveling in Our Facility
 Glass Table Tops | Framed Shower Enclosures
 Cast Glass | Integral Cabinets

8246 D Sandy Court Jessup, MD 20794
 Tel 301.984.7500 / 301.490.8824
 Fax 301.881.3294
 hutchisonglassandmirror.com

Photo©: Bob Narod; Design by Jennifer Gilmer Kitchen & Bath



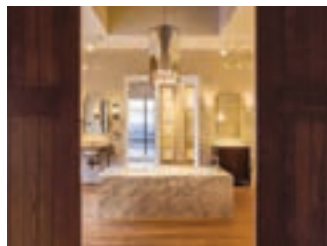
■ **Reico Kitchen & Bath**
 Reico's goal is to have every customer recommend them. With over 60 years in business and 22 showrooms, they handle custom kitchens, bathroom remodels and any size remodeling project.
 800-734-2611
 reico.com



■ **Renaissance Tile & Bath**
 A leading design resource for luxury bath, tile and stone products from around the world, Renaissance Tile & Bath stimulates imagination and transforms a vision from conceptual to tangible.
 855-395-9677
 renaissancetileandbath.com



■ **Sub-Zero/Wolf**
 Hear sizzling steak. Taste chef-made bites. See exceptional appliances. From cooking demos to product classes, you're invited to discover the potential for your kitchen at the Sub-Zero and Wolf Showroom.
 866-987-2123
 subzero-wolf.com/showroom



■ **The Somerville Bath & Kitchen Store**
 Our 8 Somerville Bath & Kitchen Stores and one Kohler Signature Store by Thos. Somerville Co. serve homeowners looking to replace a faucet or remodel an entire bath or kitchen.
 703-584-1500
 thesomervillebathandkitchenstore.com



■ **USA Cabinet Store**
 They embody the great American Story for your home. With pride in their work and a relentless pursuit of excellence, USA cabinet designs and installs kitchens and baths for your dream home.
 703-204-3444
 usacabinetstore.com

A PERFECT START TO THE DAY



+STAGE A place for everything and everything in its place. Freshly brewed coffee, chilled orange juice and many things more for a perfect breakfast. Whether with colleagues at the office or with the family at home: the customised equipment makes breakfast the finest meal of the day.

AAI Poggenpohl Inc.
6809 Wisconsin Ave.
Chevy Chase MD 20815
Phone: 301-657-8616
ahfarazad@aai-poggenpohl.com
www.chevychase.poggenpohl.com

Poggenpohl Georgetown
3327 M Street NW
Washington DC 20007
Phone: 202-342-9111
info@washingtondc.poggenpohl.com
www.washingtondc.poggenpohl.com

**poggen
pohl** 



MCHALE
LANDSCAPE
DESIGN, INC.[®]

Single Source Design Build

301.599.8300 | mchalelandscape.com



landscaping + outdoor living

Gracious Garden



While renovating their home, a McLean couple tapped McHale Landscape Design to transform their lackluster yard into an inviting outdoor environment where they could entertain family and friends. The elaborate master plan included a complete overhaul of the front entry.



THEN

A steep slope from right to left caused drainage problems and an uneven appearance.

Mundane azaleas blocked the front entry—and served as deer food.

The spare, nondescript plant palette did not provide a succession of color or textural variation.

A barren lawn was a “wasteland” in front of the house.

NOW

A cut-and-fill project leveled the front yard while a new drainage system manages storm water.

A new flagstone arrival circle complements the home’s entry portico and welcomes guests in style.

Masses of annuals and perennials, along with blooming crape myrtle, create year-round color and interest.

Flagstone pavers set into the turf forge an informal connection to the street.

Landscape Design: Phil Kelly, McHale Landscape Design, Upper Marlboro, Maryland. Photography: John Spaulding.



*Fine properties require exceptional garden care...
Thoughtfully delivered by McHale.*

SINGLE SOURCE
DESIGN
+
BUILD

McHALE LANDSCAPE DESIGN

mchalelandscape.com

LANDSCAPE

MASONRY

CARPENTRY

MAINTENANCE

CONSTRUCTION

MAIN OFFICE: 301.599.8300 ■ ANNAPOLIS: 410.990.0894 ■ EASTON: 410.770.9449 ■ MCLEAN: 703.760.8600

Outdoor Oasis

Surrounds, Inc., turns a nondescript landscape into a blooming backyard retreat

A couple with a three-acre property in Darnestown, Maryland, was ready to trade its outdated patio and gazebo for a landscape encompassing a pool, spa, patio, screened porch and more. They contacted landscape architect Chad Talton to come up with a plan that would give them the features they wanted, along with a more inviting outdoor environment.

The septic field and problematic grading meant that the pool had to be carefully sited and the yard multi-tiered. “We terraced the back, but made sure it was a gentle slope,” Talton says.

A stairway from the house to the yard was replaced by a pergola structure that leads in one direction to the spa and in the other to the patio where a grilling station and seating area lie. From the family room, a new door opens to the screened porch, which boasts ipe flooring and a gas fireplace with a stone surround.

Curvilinear features crop up throughout, including a rounded island and grilling station supported by a circular base. In addition to being a design element, this feature “conserved space,” Talton explains. “We didn’t want it to take up a lot of the patio and this was a way to accomplish that.”

In the pool area, a shallow swim shelf spills via a waterfall over boulders to the main pool, curved in a naturalistic style. Wide grass steps with bluestone risers connect the pool and patio. “They create a softer, garden-friendly look,” Talton says. Seasonal plantings in a variety of textures include flowering perennials and grasses; boxwoods and evergreens define the edges of the patio and stairs for a manicured look.



Landscape Architecture: Chad Talton, RLA, Surrounds, Inc., Sterling, Virginia. Photography: Morgan Howarth.



CHAD TALTON'S

TRADE SECRETS

- When selecting a spa, consider how you plan to use it. Prefabricated spas are typically designed for therapeutic purposes while gunite spas are more recreational. If it's intended to be therapeutic, locate it close to the house for easy access year-round.
- Ask yourself if you want the pool to be part of the home, or more of a destination—in which case you may prefer to site it with a pool house away from your home.
- If possible, frame your views so that they are not all facing the pool, because during two-thirds of the year when it is not in use, a pool is not a particularly attractive element.
- When choosing your hardscape, don't go with uniform stones; choose ones that will provide interest and contrast for impact.

Water Ways *graceful fountains enhance the garden*



1



2



3



4



5



6



7



8



9




1/ Zen Three-Bowl Fountain. Copper in Relic Lava finish; \$850. henrystudio.com **2/** Xenia Fountain. Cast stone; \$1,349. frontgate.com **3/** Timber Outdoor Fountain. Painted resin; \$262. kenroyhome.com **4/** Provence Fountain. Cast stone; \$2,495. restorationhardware.com **5/** Small Oblique Fountain with Ball. Glass fiber-reinforced concrete; \$1,959. uniquegardendecor.com **6/** Aeliana Fountain. Pulverized stone/resin; \$746. neimanmarcus.com **7/** Natural Waterwall. Carved granite boulders; \$1,280. stoneforest.com **8/** Boden Fountain-Mediterranean Blue. Glazed pottery; \$380. campaniainternational.com **9/** Cascade Outdoor Fountain. Fiber-reinforced cast-stone concrete; \$1,349. soothingwalls.com

Desire. Craft. Experience



Walnut Hill
LANDSCAPE COMPANY

Annapolis | 410.349.3105 Easton | 410.690.0977

www.WalnutHillLandscape.com    

ARCHITECT: A&T BUILDING DESIGN/ARCHITECTS • BUILDER: PYRAMID BUILDERS
LANDSCAPE ARCHITECT: CAMPOH HILBY LANDSCAPE ARCHITECTS

Great Outdoors



Fine Earth Landscapes created a naturalistic waterfall feature in a Bethesda project.

How do I determine what type of water feature is right for my yard?

The first thing is to consider how you will use the water feature. Will it be solely ornamental? Will it be used as a spa or integrated into a swimming pool? Then, we match the style of the water feature with the style of the garden. For example, a waterfall cascading over natural stone will blend perfectly with an organically flowing garden. By contrast, a symmetrical water feature will feel more at home in a formal garden with classical features.

The terrain also has to be considered. In one award-winning Fine Earth project, we were able to build a multi-level waterfall on a natural hillside while in

another, the large, flat property allowed us to create broader pools but limited the overall height and number of waterfalls we could create. —*Bernie Mihm, Fine Earth Landscape*

What are some recent trends in landscape design?

Providing a warm, inviting, low-maintenance landscape full of native plants is at the forefront of homeowners' wish lists—and the over-abundance of deer eating everything in their path makes selecting the right plants even more vital. Slow-growing and drought-tolerant plants are a terrific choice, incorporated with a wide selection of deer-resistant species. The resulting landscapes will last through many generations.

While there is a lot of large

new construction in our area, homes overall are less formal in architectural style—and their landscapes reflect that trend. Softer, more traditional plantings such as hydrangea, roses and viburnum are popular, along with wildlife-friendly flowers and other natives that will support pollinators.

Landscape designers today are blending new and traditional, low-maintenance and wildlife-friendly plantings to create beautiful, harmonious landscapes. —*Basem Saah MLA, ASLA, American Plant Landscape*

What trends are you seeing in pool construction?

We are seeing smaller plunge pools and pool/spa combos as the yard areas in new homes has decreased. These space-savers allow the rest of your

backyard to be used for other activities while also requiring less maintenance.

Another hot trend is automation. Yes, there is an app for that: Everything, from adjusting the lighting and monitoring a pool's chemical levels to turning up the heater in the spa so it's ready when you get home from work, can be done from your phone or home control panel.

Two other trends are knife-edge pools and beach entries. The knife edge is an extreme version of the infinity edge, which hides the pool's edge so the water appears flush with the deck. A beach, or zero-depth entry, slopes gradually from the pool decking into the water, eliminating the need for steps or ladders. —*Josh Kane, Kane Landscapes*

Inspire Create Sustain



Kane
LANDSCAPES, INC.

770.537.5146 www.KaneLandscapes.com

LA LEWIS AQUATECH

ELEGANT OUTDOOR LIVING

LEWIS-AQUATECH.com

703.631.2800 | 301.881.9066

Custom Swimming Pools • Landscapes • Pool Houses
Pergolas • Terraces • Outdoor Kitchens • Fireplaces • Renovations





Al Fresco Living



CLASSIC REBORN

▲ Michael S. Smith, designer of the Obamas' private White House quarters, evoked the style of timeless faux bois in his 10-piece Arbre Collection for Brown Jordan. Available in three finish options, the cast-aluminum outdoor line includes a lounge chair and coffee table (above). brownjordan.com

GO WEST

► Pindler has introduced the new Pendleton by Sunbrella collection, which combines 44 patterns inspired by Native American motifs and the beauty of the Southwest with the latest in high-performance outdoor fabric. Resistant to fading, stains and mold, the easy-care textiles are available at Pindler in the Washington Design Center. pindler.com; sunbrella.com



WARM PATINA

▲ Dedon has introduced Tibbo, its first collection in teak. Designed by London-based Barber & Osgerby, the line is hand-crafted in the Philippines with wood sourced from sustainable plantations. It features tables, armchairs with curved backs and woven-fiber seats (above), benches and lounge chairs. At Dedon in the Washington Design Center; dedon.de



703.721.4979
surroundslandscaping.com

 **SURROUNDS**
LANDSCAPE ARCHITECTURE + CONSTRUCTION



FIBER OPTICS

▲ Antonio Citterio's new Erica collection for Maxalto marries comfort and playful style. Chairs and sofas combine die-cast aluminum frames with backs made of interlacing polypropylene fiber. Three finish options shown above—Tortora, Anthracite and White—let brightly hued cushions make a bold statement. At Boffi/Maxalto in Georgetown; boffi.com



LET THE MUSIC PLAY

◀ Kichler's new Portable LED Lantern enlivens al fresco affairs with an easy-to-use source of sound and light. It couples a dimmable LED light with high-quality speakers that can pair with any Bluetooth-enabled device within a 30-foot range. The rechargeable battery delivers five hours of use at maximum volume and 100-percent light. kichler.com

A NEW SLANT

▲ Janus et Cie founder Janice Feldman designed the company's elegant and restrained Slant armchair in 2017. Available in six shades of powder-coated aluminum, the generously proportioned chairs (in sable, above) are pictured with the Strada Stone Top Dining Table, designed by Paola Navone. janusetcie.com

SWEET NOTHINGS

This new hammock by Bestetti Associati for Paola Lenti is aptly named Farniente, or "do nothing" in Italian. Made of knitted rope yarn in eight stylish colorways, it can be purchased alone or with a frame of varnished stainless steel. Available at Contemporaria in Georgetown. paolalenti.it; contemporaria.com



DESIGN | BUILD | MAINTAIN

Landscaping Your Lifestyle... Since 1974



PROFESSIONAL GROUNDS, INC.

Houzz award also won in 2016 & 2015 Angie's List Award also won in 2015 · 2014 · 2013 · 2012 · 2010 · 2009 · 2008 · 2007 LCA award also won in 2011 · 2009 · 2008

progrounds.com · 703-339-0600

Serving Washington DC and Northern Virginia

YOUR LANDSCAPE COMPANY

Wheat's 

*Inspiring designs, expertly crafted
with value and integrity.*

O: 703-641-4790 www.wheats.com



SCAPES INC.

An Award-Winning Design & Build Landscape Company

Annapolis | 410-867-6909

www.scapesinc.net



Master Plans • Water Features, Pools & Spas • Patios & Decks • Fireplaces & Outdoor Kitchens • Lighting Systems



Decksapes of Virginia L.L.C.



- CUSTOM DECKS & PORCHES
- PATIOS & WALKWAYS
- MASONRY & RETAINING WALLS
- OUTDOOR KITCHENS & LANDSCAPING

Contact us for a consultation

OFFICE 703-365-0747 OR VISIT OUR WEBSITE AT: WWW.DECKSCAPESOFVA.COM

LOCATED NEAR MANASSAS BATTLEFIELD AT
5003 SUDLEY ROAD,
CATHARPIN, VA 20143



■ **American Plant**
 With two locations in Bethesda, MD American Plant is a third-generation family-owned business which includes Garden Center and Lifestyle Boutique retail locations, plus a Landscape Design | Build | Maintain division.
 301-469-7690
americanplant.net



■ **Botanical Decorators**
 An award-winning landscape design-build firm. For over 30 years, Botanical Decorators has designed and produced high quality projects throughout the Washington, DC region. Botanical Decorators designs, builds and maintains stunning outdoor spaces for clients to enjoy to the fullest.
 301-948-6625
botanicaldecorators.com



■ **Campion Hruby Landscape Architects**
 Campion Hruby is a landscape architecture firm dedicated to modern cultivation of nature, culture, art and self-expression through the thoughtful design of city gardens and coastal environments.
 410-280-8850
campionhruby.com



■ **Decksapes of Virginia LLC**
 Family owned and operated, providing custom design/build services since 2004. Your outdoor living space begins with custom design, excellent customer service and quality craftsmanship. Custom decks, porches, patios, walkways, sunrooms, permeable driveways, outdoor kitchens, fireplaces and landscaping.
 703-365-0747
decksapesofva.com



■ **Kane Landscapes, Inc.**
 For over 25 years, Kane Landscapes has inspired, created and sustained award-winning landscapes for area residents. Their professional and experienced staff of landscape architects and horticulturists provides superior service and attention to detail to create distinctive and functional outdoor environments.
 703-803-3146
kanelandscapes.com



■ **Lewis Aquatech**
 Each project has the same goal: to extend the theme from the interior of a home to its exterior, resulting in a beautiful environment that flows flawlessly from one point to the other.
 703-631-2800
lewis-aquatech.com



■ **McHale Landscape Design**
 A residential landscape architecture design/build firm. A diverse staff of landscape architects, horticulturists, carpenters and masons provides clients with one true source for superior craftsmanship and design excellence. Award-winning services for over 25 years.
 301-599-8300
mchalelandscape.com



■ **Professional Grounds, Inc.**
 An award-winning, full service landscape design/build company placing top-quality service and products at the forefront of their projects. Professional Grounds wants you to come home to a vacation every day.
 703-339-0600
progrounds.com

Outdoor Living



Call Botanical Decorators to begin planning your own private oasis



BotanicalDecorators™

OUTDOOR LIVING SPACES | LANDSCAPE MASTER PLAN
POOLS | STONE WORK | DECKS | LANDSCAPE LIGHTING

WWW.BOTANICALDECORATORS.COM p.240-406-9776



■ **Scapes, Inc.**

A full-service landscape design and build company, providing a full range of custom design services while specializing in the construction of outdoor living spaces that promote relaxation and enjoyment.
410-867-6909
scapesinc.net



■ **Surrounds Landscape Architecture + Construction**

Surrounds has a reputation for creating, installing and maintaining award-winning outdoor living environments that enhance lifestyles. They merge landscape architecture/design services with professional construction and meticulous garden management.
703-430-6001
surroundslandscaping.com



■ **Walnut Hill Landscape Company**

They view landscape design and construction as a blend of art and science. Every great landscape begins with a vision and every project presents unique challenges.
410-349-3105
walnuthilllandscape.com



■ **Wheat's Landscape**

Wheat's Landscape is an award-winning full-service company, providing exterior solutions to discerning homeowners who desire personalized attention, creativity, quality craftsmanship and lasting relationships.
703-879-2631
wheats.com



© David Burroughs

CAMPION HRUBY
LANDSCAPE ARCHITECTS

campionhruby.com
410.280.8850



Bob Narod, Photographer, LLC

www.narodphoto.com



MCHALE LANDSCAPE DESIGN



12213 Sugar Creek Court • Herndon, VA 20170 • 703-404-9001



One Name Says it All!

Michael Nash[®]
Design  Build & homes
The Ultimate in Luxury[®]

New Homes • Additions • Kitchens • Bathrooms • Basements • Outdoor Living Spaces

703.641.9800 | michael-nash.com



remodeling

Fresh Start



Homeowners who purchased a dated split-level in Vienna tapped Gyan Manu of the design/build firm G. Manu & Associates to overhaul the interiors and create a visually appealing exterior using natural building materials and a clean, modern aesthetic.



THEN

A nondescript brick façade and traditional windows and shutters made the house look faded and boring.

A ramshackle carport was an eyesore, offering little storage space and only accommodating a single car.

The house offered no sense of arrival, with a mundane front door that seemed to blend into the front façade.

NOW

The brick has been covered in stucco, painted in two colors for contrast. Panels of Western red cedar accent the corners of the left volume. Sleek, modern windows add to the clean-lined look.

A two-car garage with frosted-glass doors replaced the carport. The roofline is enlivened by the addition of a second-story master suite.

A porch area wide enough for a bench draws the eye to the new, modern front door, which is painted an eye-catching brick hue.

Renovation Architecture & Contracting: Gyan Manu, Associate AIA, NCARB, G. Manu & Associates, Falls Church, Virginia. Photography: Jason Flakes.



CARNEMARK
design + build
CARNEMARK.COM



Chrysalis Award—2017
Residential Universal Design



Capital CotY Grand
Award Winner—2016



4th Consecutive Year

Three-Season Style

An ingenious porch addition makes outdoor living a breeze

A Potomac couple called on Anthony Wilder Design/Build to expand their traditional abode with a porch and deck in contrasting modern style. “The goal was a room for all seasons that would feel different from the rest of the house,” says project architect Marian Vaias.

She and her team designed an industrial-chic porch that spills out onto a deck through a glass-framed garage door. Conceived by Wilder designer Steve Spohr, the garage door slides open above floating ceiling beams, from which lights and fans are suspended. Removable windows and casements keep breezes flowing in the warmer months while sheltering against the elements. Radiant heating under porcelain-tile floors adds warmth.

One side of the porch opens to the deck, which boasts a linear gas fire pit. On the other side of the porch, a covered grilling station complete with gas lines and an exterior-grade range hood enables the owners to cook outdoors all year round.

Designer Shannon Kadwell selected finishes that convey an industrial edge, from wood beams and window frames painted to look like steel to matching dark-painted aluminum garage-door frames. The addition is clad in tongue-and-groove cedar, treated to retain its hue. The deck is cedar with cable railings and a pressure-treated wood floor stained to look like cedar.

Designer Keira St. Claire-Bowery furnished the addition with a custom dining table, Lee Industries chairs and a woven armchair by Palecek. Gloster seating surrounds the fire pit, and all furniture is upholstered in Perennials outdoor fabric. LED lights illuminate the railings and stairs, which lead to a flagstone patio.



 Addition Architecture & Contracting: Marian M. Vaias, AIA; Interior Design: Shannon Kadwell, CMKBD, Allied ASID; Keira St. Claire-Bowery, Allied ASID, Anthony Wilder Design/Build, Cabin John, Maryland. Landscape Design: Rossen Landscape, Sterling, Virginia. Photography: John Cole.



MARIAN VAIAS'S

TRADE SECRETS

- When building a porch addition, consider how you will use it. Is it just for family or will you be entertaining? Will you spend time there year-round?

- Airflow is very important. Do you want to include operable windows? Where will the doors be located? What about ceiling fans? A heated floor will allow for use during colder months.

- When locating a porch addition, keep in mind the impact it will have on available light in the house. We often enlarge doors to the interiors and add skylights to compensate for loss of light inside.

- The porch ceiling should be as high as possible; this will make the space lighter and airier.

Air Time *ceiling fans marry form and function*



1



2



3



4



5



6



7



8



9

1/ Stella. Design by Dave Ellis; maple-stained plywood and glass; from \$595. modernfan.com **2/** Bloom. All-weather blades painted pink and white; \$560. fergusonshowrooms.com; craftmade.com **3/** Gauguin. All-weather blades in Bahama Beige; \$460. dominionelectric.com; minkagroup.net **4/** Empire. Brushed steel; \$1,048. montecarlofans.com **5/** Cranbrook Mint. Blonde oak, metal; \$219. hunterfan.com **6/** Artisan Collection. Artist-commissioned designs on aircraft-grade aluminum; \$6,495 for 84-inch original, \$2,495 for replica. bigassfans.com **7/** Dagny LK. Cast aluminum, heavy-stamped steel, wood; from \$895. matthewsfanco.com **8/** Orchid. Walnut-finished plastic, pewter-finished stainless steel; \$499. annapolislighting.com; casablancafanco.com **9/** Brewmaster Long Neck. Replica of 19th-century Snediker & Carr belt-drive fan; lead, copper, hardwood laminate; from \$1,980. fanimation.com

Andersen®
ARCHITECTURAL
COLLECTION



Uncompromising style,
variety and performance.

The Andersen® Architectural Collection

is an innovative approach to windows and doors, based on the style of home you want to create. Now it's easier than ever to turn your dream into a reality.
www.andersenwindows.com

*Andersen® and the AW logo are registered trademarks of Andersen Corporation.

1.888.TW.PERRY www.twperry.com

TW Perry's window specialists and consulting staff have factory trained expertise, many years of industry knowledge and experience to be a valued resource in the product selection process. Contact a TW Perry Consultant today to help you on your next project: windowmetrodc@twperry.com



ANDERSEN® WINDOWS & DOORS AVAILABLE AT TW PERRY:

ANNAPOLIS, MD • BALTIMORE, MD • SILVER SPRING, MD • GAITHERSBURG, MD • LEESBURG, VA • SPRINGFIELD, VA

To Build a House



During the renovation of a Germantown, Maryland, home, Hopkins & Porter breathed new life into a living room with a vaulted ceiling and crisp white-painted beams and millwork. Photo by Wilhelm Rudzinski.

How do I determine a realistic time frame for my project?

There is no magic formula for determining a schedule—each job's timeline is determined by its complexity and detail. But if all parties are on the same page, the process can move smoothly. The clients' objectives should be carefully considered during the planning phase. When the scope of work is established, each phase of construction is planned so manpower and materials are available simultaneously.

We meet with all active participants so everyone knows their responsibilities and the timeline attached. Weekly meetings with the client address hiccups in weather, receipt of materials or special orders. Aiding the client with their selections is a huge part

of the process; any delay in decision-making on their part can affect the schedule. Communication with the client is paramount to a successful project and maintaining a seamless schedule.

—Ray Hornsby, Hopkins & Porter Construction, Inc.

How do you guide your clients through material selection?

As a design/build firm, we are accountable for the entire process from design through construction. Our product-selection process is integrated in our overall project management plan. Once we complete the physical design of the space, we outline what items will need to be selected to meet our functionality and aesthetic goals. We create a critical path with the client based on the way they like to

make decisions. Some clients like to touch and feel every faucet while others don't want to step foot in a showroom. Based on their desired approach, we create a timeline that ensures the items they've selected will be delivered on time for installation. Budget plays an important role. We offer options for each selection, recommending the one we feel is best. We help the client make a good choice rather than dictating what they should pick. —Wilma Bowers, Bowers Design Build

What are the challenges of a basement remodel?

A basement remodel can significantly increase living space while freeing up other rooms for improvements. It can house guest quarters, in-law accommodations, game rooms and

family entertainment features. And according to *Remodeling* magazine, basement remodels in the South Atlantic region now recover 70 percent of costs in a same-year resale.

A basement can be tricky, however. Re-routing HVAC and other utilities may be necessary. Support beams may have to shift to create usable square footage. Bringing in water and electrical lines for a wet bar or refrigerator requires knowledge of local codes. The interior design scheme must maximize aesthetic appeal. Will there be natural light? What detailing and finishes will define the space?

A basement remodel offers lifestyle improvement possibilities that we always aim to achieve for our clients. —Sonny Nazemian, Michael Nash Design, Build & Homes

Dreaming of a new kitchen...



Knowledgeable People.
Professional Design.
Expert Installation.

Cabinets, countertops, appliances, flooring,
lighting and the design expertise to do it right.
Let us help you create a kitchen or bathroom
that will bring your dream to life.

Reico
KITCHEN & BATH

www.reico.com

Visit one of our 22 showrooms located throughout Maryland, Virginia, North Carolina, Delaware and Pennsylvania

Annapolis, MD (410) 571-8400
Bethesda, MD (301) 654-6000
Chantilly, VA (703) 245-8950
Charlottesville, VA (434) 923-0400
Charlotte, NC (984) 222-6300
Chesapeake, VA (757) 564-4820
Elkridge, MD (410) 579-1774

Falls Church, VA (703) 748-0700
Frederick, MD (301) 631-0400
Fredericksburg, VA (540) 371-8005
King of Prussia, PA (610) 382-1137
Millsboro, DE (302) 223-9200
Raleigh, NC (919) 878-7744
Richmond, VA (804) 262-8389
Roanoke, VA (540) 375-6400

Southern Pines, NC (910) 693-0162
Springfield, VA (703) 914-4900
Timonium, MD (410) 776-2220
White Plains, MD (301) 638-0400
Williamsburg, VA (757) 564-4820
Wilmington, DE (302) 894-0400
Woodbridge, VA (703) 245-8900

Material Palette



WALL ART

▲ Eye-catching layers and textures define Architectural Systems' Interwoven Eco-Panels, which are made of interlocking recycled-wood pieces finished in a choice of four maple shades. Backed with birch and finished with a low-sheen, UV varnish, they create the perfect accent wall. archsystems.com

TREND WATCH

► The marble trend in bathrooms shows no sign of slowing down, and Statuarietto marble is the latest iteration to catch on. Similar to Carrara but distinguished by a pure white background and strong gray veining, it is available through Country Floors in three tile formats as well as in slab form (pictured). countryfloors.com



SUSTAINABLE STYLE

▲ Architects and designers who specify wood for its warmth and beauty now have a new eco-friendly alternative: Nature Undisturbed, a collection of laminates from Wilsonart designed to resemble wood species from threatened and endangered forests. Sixteen laminate surfaces include Eucalyptus, Cocobolo and Midnight Ebony (pictured), which mimics African blackwood. wilsonart.com

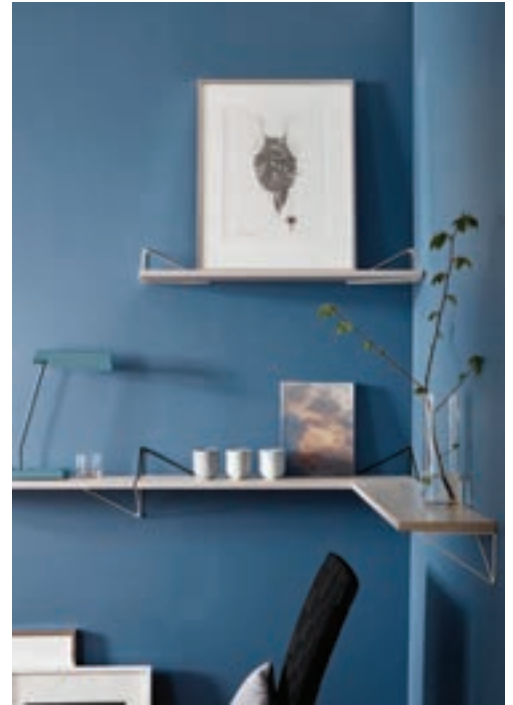


SHOWER TIME

◀ The Euphoria Cube Shower System from Grohe brings technology to bear, with thermostatic controls that maintain a safe and comfortable water temperature. Overhead and adjustable hand-held showerheads provide bathing options, while clean, geometric lines convey a minimalist vibe. grohe.com

SHELF LIFE

▶ Style and function meet in the Pythagoras shelf system, conceived by Gustav Rosén for Stockholm-based Maze Interior. Comprised of triangular, recycled-steel wire brackets and MDF boards, the shelf units can be configured as inspiration strikes; boards and brackets come in a range of finishes. scandinaviandesigncenter.com



MIXED MESSAGES

Two-tone cabinets are increasingly prevalent in kitchens today, with designers mixing wood species, finishes, textures, colors and even styles, to create fresh new looks. Here, Kemper maple cabinets are juxtaposed in complementary stain and opaque finishes for a clean, transitional aesthetic. Available through MasterBrand Cabinets. masterbrand.com



FUEL SOURCE

◀ New York City-based HearthCabinet offers an alternative to gas and wood fireplaces: a ventless fireplace fueled by a single-use alcohol gel cartridge that burns cleanly, creates a crackling flame and generates heat. Stand-alone and wall-mounted versions are available in a range of sizes and finishes. hearthcabinet.com

NIGHT SKY

▼ A new tile collection by New Ravenna founder Sara Baldwin was inspired by the night sky. Encompassing six waterjet-mosaic motifs, Trove is handcrafted in Virginia using natural stone, brass and aluminum; Baldwin selected matte marble surfaces, some in cloudy grays and blacks, then accented them with gleaming metallics. Pictured below, Michael, a pattern shown in honed Bardiglio, polished Calacatta Tia and brass. newravenna.com



VANITY FAIR

▲ Strasser Woodenworks' SoDo Collection of bathroom vanities takes its name from the eponymous industrial enclave in Seattle—and reflects that edgy sensibility in its design. A wall-mounted construction creates a streamlined effect, while an array of options, from sizes and door styles to finishes and hardware, complements any décor. strasserwood.com



Architects & Builders

ARCHITECTURE
 INTERIOR DESIGN
 CONSTRUCTION
 REMODELING

www.wentworthstudio.com

240.395.0705

8555 Connecticut Ave., Suite 200
 Chevy Chase, Maryland 20815

connect with us
 for fresh inspiration

HOME&DESIGN
 THE MAGAZINE OF ARCHITECTURE AND FINE INTERIORS



HomeAndDesign.com



Traditional Lighting
 crafted for the
 discerning designer.



HERITAGE-METALWORKS.COM



■ **BOWA – Design Build Experts**

With a focus on delivering remarkable client experiences and superior construction quality, BOWA specializes in renovations ranging from master suites and kitchens to whole-house and whole-condo remodels. Call BOWA first. 703-734-9050 bowa.com



■ **Cahill Design Build**

Creating distinctive architecture that meets clients' goals in meaningful ways while also contributing to an ongoing pursuit of design excellence. Built on the principles of classic design, Cahill Design Build delivers a custom project that exceeds expectations. 202-363-4626 cahilldb.com



■ **Carnemark Design + Build**

From whole-house remodels to kitchen, addition, bath and condo renovations, Carnemark creates design + build solutions that flow—meeting practical needs in life through a client-responsive, environmentally sensitive process. 301-657-5000 carnemark.com



■ **Gutierrez Studios**

A company of dedicated artisans producing custom furniture, lighting and architectural features in metal, wood and glass. They offer design through installation services and bring expert craftsmanship and professional service to every project. 410-889-5341 gutierrezstudios.com



■ **Heritage Metalworks**

Helping YOU impress YOUR clients, by creating custom lighting, hardware & decorative metalwork – expertly with less stress on you - in brass, bronze, copper iron, steel, stainless, zinc and tin. 610-518-3999 heritage-metalworks.com



■ **Michael Nash Design, Build & Homes**

Michael Nash skillfully marries engineering and infrastructure solutions with well-articulated elevations and interior scheme that is architecturally-appropriate, highly functional and warmly inviting. 703-641-9800 michael-nash.com



■ **Reico Kitchen & Bath**

Reico's goal is to have every customer recommend them. With over 60 years in business and 22 showrooms, they handle custom kitchens, bathroom remodels and any size remodeling project. 800-734-2611 reico.com



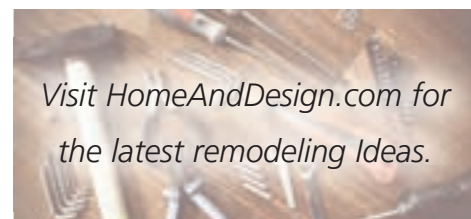
■ **TW Perry**

The largest local full-service lumber and building materials supplier. Their success is credited to establishing loyal customers who understand the value of their services and products. 888-TWPERRY twperry.com



■ **Wentworth, Inc.**

Wentworth, Inc. offers a unique collaboration of architects, designers and craftsmen who integrate architecture, interiors and construction to create award-winning homes with timeless livability. 240-395-0705 x200 wentworthstudio.com



Visit HomeAndDesign.com for the latest remodeling Ideas.

Afternoon Delight



CAHILL
DESIGN
BUILD

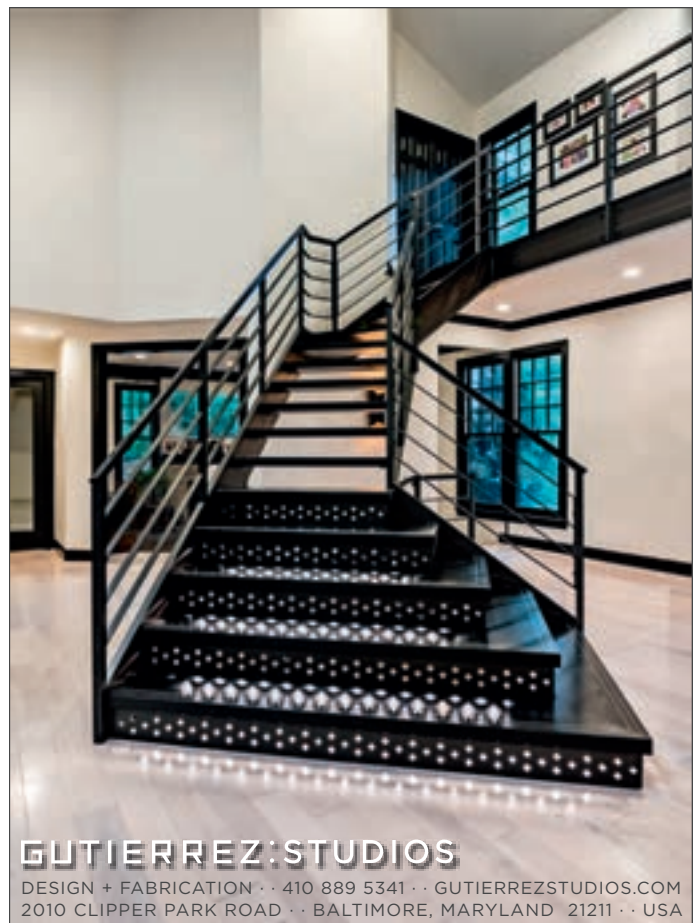
Kitchen | Bath | Cabinetry | Additions | Remodeling
p.202-363-4626 | www.cahilldb.com



NAPOLEONFIREPLACES.COM

LOOK FOR
LUXURY REMODELING IDEAS
AT
HOMEANDDESIGN.COM

HOME&DESIGN
THE MAGAZINE OF ARCHITECTURE AND FINE INTERIORS



GUTIERREZ:STUDIOS

DESIGN + FABRICATION · 410 889 5341 · GUTIERREZSTUDIOS.COM
2010 CLIPPER PARK ROAD · BALTIMORE, MARYLAND 21211 · USA

INDEX of Advertisers



INTERIOR DESIGN

90 Decibels 118
 Baker Furniture 110
 Barbara Hawthorn Interiors Ltd. 107
 Benjamin Moore 125
 Bob Narod Photography 173
 Bountiful Interiors 117
 Brass Beds of VA. 124
 David Cochran 119
 David Therriault 110
 Fitzsimmons Design 111
 Green Front Furniture 121

ARCHITECTURE + CUSTOM BUILDING

AV Architects + Builders 43
 Anthony Wilder 39
 Becker Morgan Group 49
 Bowers Design/Build 45
 Casey Margenau 51
 Edelmann Love Toregas Group 47
 GTM 40
 James McDonald Architects 32, 33
 John F. Heltzel AIA 49
 Lynbrook of Annapolis 41
 Pyramid Builders 35
 Randall J. Kipp Architecture 40
 Studio Z Design Concepts 53
 Tri-State Stone 53

CLOSETS + ORGANIZED SPACES

California Closets 68, 69, 71
 Closet Factory 75
 Closets by Design 77
 Poliform BC

FLOORS + WINDOWS + DOORS

Carpet Creations & Collage Workroom . 85
 Clark Hall Doors 87
 Karpet King 91
 Marvin Windows and Doors 2
 Quality Window & Door . . 78, 79, 81, 89
 Stark Carpet IBC
 Upstate Door 95
 Western Window Systems 93



AUDIO/VIDEO + LIGHTING

A.B.E. Networks 57
 American Automation 61
 Dominion Electric Supply Co. . 54, 55, 64
 Electronic Home Environments 64
 Integrated Media Systems 65

Haleh Design 113
 Interior Concepts, Inc. 109
 Kristin Peake Interiors 103
 Melissa Broffman Interior Design . . 115
 Michael Cleary, LLC 1
 Olamar Interiors 114
 Paula Grace Designs 105
 Roche Bobois 4
 Rockville Interiors 118
 Samantha Friedman Interior Designs . 116
 Sew Beautiful 123
 Sheffield Furniture & Interiors 6, 7
 Sroka Design Inc 96, 97, 99
 Susan Gulick Interiors 8
 TOBE Design Group 110
 Washingtonian Interiors 125



KITCHEN + BATH

Appliance Distributors Unltd.	126, 127, 129
Bel Pre Glassworks, Inc.	143
Best Tile	145
Caeserstone	9
Clear Mirror	144



Cosentino.	139
David's Kitchen & Tiles	144
Ferguson Bath, Kitchen, Lighting	138
Gramaco	142
Hutchison Glass & Mirror, Inc.	150
Jack Rosen Custom Kitchens, Inc.	133
Jennifer Gilmer Kitchen & Bath Ltd	137
M. Teixeira Soapstone.	136
Marble Systems.	140
Michael Nash Design Build	141
Poggenpohl	151
Porcelanosa	IFC
Push Pull Decorative Hardware.	144
Reico Kitchen & Bath	149, 183
Renaissance Tile Stone Bath	3
Sub-Zero	135
USA Cabinet Store	147



LANDSCAPING + OUTDOOR LIVING

Botanical Decorators.	171
Campion Hruby Landscape Architects	172
Deckscape of Virginia, LLC	169
Kane Landscapes, Inc.	161
Lewis Aquatech	162, 163
McHale Landscape Design	152, 153, 155
Professional Grounds, Inc.	167
Scapes Inc.	168
Surrounds Landscape Architecture	165
Walnut Hill Landscape Company	159
Wheat's.	168

REMODELING

Cahill Design Build	189
Carnemark design + build	177
Gutierrez Studios	189
Heritage MetalWorks	187
Michael Nash Design Build	174, 175
TW Perry	181
Wentworth	187





Vibrant color bloomed in a backyard garden in Norfolk during the 2017 Historic Garden Week in Virginia. Photo: Connie Kellum.

A 2018 calendar of home and garden shows, tours and special events

JANUARY 19–21 Home + Remodeling Show

Dulles Expo Center, Chantilly, Virginia;
homeandremodelingshow.com

FEBRUARY 23–25 American Craft Show Baltimore

Baltimore Convention Center,
Baltimore, Maryland; craftcouncil.org

FEBRUARY 23–25 Capital Remodel + Garden

Show Dulles Expo Center, Chantilly, Virginia;
capitalremodelandgarden.com

MARCH 3–4, 9–11 Maryland Home & Garden Spring

Show Maryland State Fairgrounds, Timonium, Maryland;
mdhomeandgarden.com/spring

SPRING Baltimore Symphony Associates

Decorators' Show House Location and dates
to be determined; bsomusic.org

APRIL 28 Georgetown House Tour

Georgetown; georgetownhousetour.com

APRIL 21–28 Historic Garden Week in Virginia

The Garden Club of Virginia; tours statewide;
vagardenweek.org

APRIL 26–29 Smithsonian Craft Show

National Building Museum, DC; smithsoniancraftshow.org

MAY 5 & 6 The 17th Annual Parade Of Homes

Northern Virginia; vaparade.com

MAY 12 & 13 Bethesda Fine Arts Festival

Bethesda, Maryland; bethesda.org

MAY 12 & 13 Capitol Hill Restoration Society

Annual House and Garden Tour
Capitol Hill, DC; chrs.org

JULY 15–22 Plein Air Easton Art Festival

Easton, Maryland; pleinaireaston.com

AUGUST 30–SEPTEMBER 2 Baltimore Art, Antique & Jewelry Show

Baltimore Convention Center, Baltimore,
Maryland; baltimoresummershow.com

FALL 2018 DC Design House

Location and dates
to be determined; dcdesignhouse.com

OCTOBER 13 Reston Home Tour

Reston, Virginia;
restonmuseum.org

OCTOBER 21 Dupont Circle House Tour & Tea

Dupont Circle, DC; dupont-circle.org

OCTOBER 19–21 Maryland Home & Garden Fall

Show Maryland State Fairgrounds, Timonium, Maryland;
mdhomeandgarden.com/fall



STARK[®]

VEBB NAVY RUG
ROOM DESIGN BY KIRSTEN KELLI LLC

THE WASHINGTON DESIGN CENTER
1099 14TH STREET NW SUITE 403
WASHINGTON, DC 20005

202.484.4566
STARKCARPET.COM



*experience our exclusive collection of furniture,
closets, kitchens, bathrooms and
lighting in an authentic georgetown home*

*poliform home
2611 p street nw / washington, dc 20007
202.554.8658 / info@poliformdc.com
www.poliformdc.com*

Poliform
sagartstudio