

HOME & DESIGN

LUXE style

FROM DAZZLING
MAKEOVERS TO
CHIC NEW ABODES

LUSH LANDSCAPES
*for the ultimate in
outdoor enjoyment*





K I T C H E N | B A T H R O O M | B A S E M E N T

Visit our McLean Showroom

Boss Design Center | 1389 Chain Bridge Rd, McLean, VA 22101

BOSS DESIGN
REMODELERS & ARCHITECTS

703-912-0379

BOSSDESIGNCENTER.COM



HOLLY HUNT

Walls

MAIORI PHOTO: JONATHAN ALLEN

Explore the new HOLLY HUNT wallcovering portfolio
at hollyhunt.com.

Imagine...



WITH McHALE YOU CAN.

SINGLE SOURCE
DESIGN
+
BUILD

AVAILABLE FOR PRE-ORDER NOW!

STRUCTURE

A Pictorial Book
Celebrating 40 years of
McHale Landscape Design

For more information contact us at
STRUCTURE@mchalelandscape.com or
scan the QRcode with your smart phone.



McHALE LANDSCAPE DESIGN

MAIN: 301.599.8300 EASTON: 410.770.9449
MCLEAN: 703.760.8600 ANNAPOLIS: 410.990.0894
CLARKSBURG: 301.972.9090

mchalelandscape.com





circa LIGHTING®
EXPERIENCE VISUAL COMFORT



60" ARMSTRONG CEILING FAN
IN AGED PEWTER WITH LIGHT GREY WEATHERED OAK
DESIGNER: SEAN LAVIN



SHOP NOW: [CIRCALIGHTING.COM](https://www.circalighting.com)

3323 CADY'S ALLEY NW, WASHINGTON DC 202.342.1300

ATLANTA AUSTIN BOSTON CHARLESTON CHARLOTTE CHICAGO DENVER
DETROIT (2021) GREENWICH HOUSTON LA LAGUNA LONDON MANHATTAN MIAMI MINNEAPOLIS NASHVILLE
NORWALK SAN FRANCISCO SAVANNAH SCOTTSDALE SEATTLE SOUTHAMPTON (2021)



D W E L L
I N T H E
U N C O M M O N

Where memories aren't just made, they're inspired.



This historic Washington DC property is presented by
Urban Pace | Wardman Tower 202.751.2900



Virtual tours and showings on **longandfoster.com**

OUR INTEGRATED NETWORK OF SERVICES MAKES A DIFFERENCE, NOW MORE THAN EVER
Mortgage | Settlement Services | Insurance | Property Management | Vacation Rentals | Relocation | Development Real Estate Services | Moving Services



Built-In Beauty. Effortless Functionality.
25% off* Avera Premium Closets.

No Interest For 24 Months‡

On Purchases made every day of \$3,000 or more after discounts with The Container Store credit card. 24 Equal Monthly Payments required.

The innovative design of Avera Custom Closets takes all the benefits of a built-in closet and puts them within reach. From LED Lighting and specialized shoe storage to drawers that open and close with just a touch, cabinets and glass shelves, every detail has been meticulously crafted. Schedule your free design consultation today (or try our new Virtual In-Home Design Service) at [containerstore.com/custom-closets](https://www.containerstore.com/custom-closets).

The Container Store®
CUSTOM CLOSETS

*Offer excludes gift cards and all previously purchased items. Valid only on regularly priced items and cannot be combined with any other discount/sale price. We will ALWAYS give you the better value between two or more offers. Sale ends May 26, 2021. ©2021 The Container Store Inc. 50411

‡Total qualifying purchase or order amount must be on one receipt and may include installation fees. Excludes gift cards, international shipping orders and organizing services. Discounts may result in the qualifying purchase amount not being satisfied. No interest will be charged, and equal monthly payments are required on promo purchase until it is paid in full. The payments equal the initial total promo purchase amount divided by the number of months in the promo period, rounded up to the next whole dollar. These payments may be higher than the payments that would be required if this purchase was a non-promo purchase. Regular account terms apply to non-promo purchases. For New Accounts: Purchase APR is 29.99%. Minimum Interest Charge is \$2. Existing cardholders: See your credit card agreement terms. Subject to credit approval. We reserve the right to discontinue or alter these promotions at any time.

Cabinetry Book&Look
Pagnon & Pelhaître
Sofa Philéas
Philippe Nigro
Made in France

Ligne Roset D.C.
2201 Wisconsin Ave NW
Washington, DC 20007
(202) 248-3112
info@lignerose-dc.com





Live deliciously.
Indoors and out.

Sub-Zero, the preservation specialist. Wolf, the cooking specialist. Cove, the dishwashing specialist.
Find them exclusively at your local outdoor kitchen specialist.

Superior preservation, cooking, and dishwashing appliances demand exceptional service. ABW Appliances is proud to provide a better way to shop, install, and service extraordinary Sub-Zero, Wolf, and Cove appliances. Schedule a private consultation with a specialist at one of ABW's spotless experiential showrooms and ask about free delivery on grills through June 30, 2021.



301-589-1445
ABWappliances.com
Hours vary by location

Arlington and Ashburn, VA
North Bethesda and Kensington, MD
Coming soon to Jessup, MD!

contents

may • june 2021



FEATURES

96

Outdoor Escapes

by Sharon Jaffe Dan

Three spectacular landscapes celebrate al fresco living in style.

106

Joyful Mix

by Catherine Funkhouser

A custom Spring Valley home combines clean-lined, traditional architecture and richly layered interiors.

120

Serene Dream

by Kelly Velocci

Architect Jeffrey Davenport designs his own modernist family retreat on Virginia's Lake Anna.

128

Subtle Motif

by Linda Hales

A dramatic renovation imbues a McLean abode with understated elegance and contemporary flair.

140

Bay Beauty

by Julie Sanders

A design team crafts a sprawling getaway on Maryland's Eastern Bay to reflect its stunning waterfront locale.

100



50

“I like forward-thinking, modern and the unexpected. But there’s always a base you have to touch upon.”

—KATALIN FARNADY



27



155

DEPARTMENTS

Welcome 18
Front + Center 27
 Farnady Furniture unveiled
 • Design debuts
Happening 36
 Events + exhibitions
High Style 43
 Fashion • Dining • Technology
Designer’s Eye 50
 Sandra Meyer elevates a dated Chevy Chase condo.
Cool + Collected 73
 Outdoor living products galore
In Studio 195
 Faith Wilson’s fanciful floorcloths
Encore 208
 Outpost on the Occoquan

BUILD + REMODEL

Smart Makeover 155
 A Loudoun County renovation makes the most of stunning natural scenery.
Industry Awards 164
 2021 Contractor of the Year Awards
Idea File 182
 Form meets function in three COTY Award-winning redos.
Cutting Edge 190
 Artisanal metalwork

LUXURY HOMES

Real Estate Report 198

RESOURCES

Design Visionaries 60
Outdoor Living 72
Design Partners 152
COTY Award-winners 168

ON THE COVER

A Berman Rosetti table and a dramatic brass chandelier grace the dining room in a recent McLean makeover. *Renovation Architecture: Studio 360. Interior Design: Lotus Interior Design. Contractor: BOWA. Photo by Stacy Zarin Goldberg.*

MONARCH



CHARLENE KENNERKNECHT

MONARCHINTERIORDESIGNGROUP.COM

PURPLE CHERRY

PURPOSE IN ARCHITECTURE

— ARCHITECTURE & INTERIORS —

Annapolis, MD | Charlottesville, VA | Middleburg, VA | White Sulphur Springs, WV | purplecherry.com | 410-990-1700





GUTIERREZ:STUDIOS



DESIGN + FABRICATION · 410 889 5341 · GUTIERREZSTUDIOS.COM
2010 CLIPPER PARK ROAD · BALTIMORE, MARYLAND 21211 · USA

TOBE DesignGroup

INTERIOR ARCHITECTURE + DESIGN



Photo: Jenn Verrier

Every space has a story. Let us design yours.

tobedesigngroup.com | 301.656.6600

DC • MD • VA

HOME&DESIGN

THE MAGAZINE OF ARCHITECTURE AND FINE INTERIORS

PUBLISHER Tod Herbers

EDITOR IN CHIEF Sharon Jaffe Dan

SENIOR EDITOR Julie Sanders

ART DIRECTOR Rebecca K. McClimans

PRODUCTION DIRECTOR Jean Crispens-Williams

GRAPHIC DESIGNER Nelson Sayson

OPERATIONS MANAGER Jerry Parks

DIRECTOR OF NEW MEDIA Devin Herbers

CREDIT MANAGER Donna Taurman

COMMUNICATIONS MANAGER Katie Fernandez

DIRECTOR OF SALES + MARKETING Martha Campion

ADVERTISING MANAGER - DC Monica West Porter

SENIOR ACCOUNT MANAGER Mechelle Clements

ACCOUNT MANAGER Wendy Simon

newsstand distribution by



Copyright 2021 Washington Maryland Virginia HOME & DESIGN® (ISSN 1551-0247) May/June 2021, volume twenty three number three. Washington Maryland Virginia HOME & DESIGN is published bi-monthly by Homestyles Media Inc, 451 Hungerford Drive, Suite 350, Rockville, MD 20850. Subscriptions: U.S. one year (6 issues) \$22.95, two years (12 issues) \$36.95; Canada one year \$168.00, two years \$317.00; Non-U.S. one year \$208.00, two years \$397.00. Single copies \$6.95 plus postage.

POSTMASTER: Send address changes to HOME & DESIGN, P.O. Box 301, Congers, NY 10920-0301 USA. For advertising and editorial information, call 240-328-6275.

All rights reserved. No part of this periodical may be reproduced without written permission. Neither the Publisher nor the Advertisers will be held responsible for any error found in the magazine, nor does the Publisher accept any. The Publisher accepts no liability for the accuracy of statements made by Advertisers. The Publisher is not responsible nor assumes any liability for omissions or errors in the table of contents or directories. This is not intended as an offer where prohibited by state laws. All prices and finance claims appearing in this magazine are subject to change without prior notice. All real estate advertised in this magazine is subject to the Federal Fair Housing Act, which makes



it illegal to advertise "any preference, limitation, or discrimination because of color, religion, sex, handicap, familial status, or national origin." This company will not knowingly accept any advertisement for real estate which is in violation of the law. All persons are hereby informed that all dwellings advertised are available on an equal opportunity basis.

Advertising Information
240-328-6275

Subscription Information
866-691-6115

Stay connected to HomeAndDesign.com wherever you are

@homeanddesigndc

@HomeAndDesign

@HomeAndDesignMagazine

@homeanddesigndc

One Stop for Your Orthopedic Needs

GW Hospital Orthopedics offers comprehensive services, from neck to toe. We support patients every step of the way, from diagnosis to treatment to outpatient rehabilitation.

Surgical options include minimally invasive surgery and robotic-assisted procedures. Smaller incisions may lead to less pain and blood loss, as well as shorter hospital stays and recoveries for patients.

We offer virtual health appointments and take special precautions at the hospital to help keep you safe when you visit us in person.



Our Services

- Foot and Ankle
- Hand, Shoulder and Elbow
- Hip - including the GW Hip Preservation Program
- Knee
- Ortho Trauma
- Rehabilitation
 - ACL Rehabilitation Program
 - General Outpatient Rehabilitation
 - Joint Replacement Rehabilitation Program
- Spine - GW Spine and Pain Center
- Sports Medicine
- Total Joint Replacement Center



Orthopedics

THE GEORGE WASHINGTON UNIVERSITY HOSPITAL

To schedule an in-person or virtual appointment, call **888-4GW-DOCS (449-3627)** or visit **gwhospital.com/ortho**.

Individual results may vary. There are risks associated with any surgical procedure. Talk with your doctor about these risks to find out if minimally invasive surgery is right for you.

Physicians are independent practitioners who are not employees or agents of the George Washington University Hospital. The hospital shall not be liable for actions or treatments provided by physicians. For language assistance, disability accommodations and the non-discrimination notice, visit our website. 204587-7516 3/21





Striking an artful
balance between
structure and style.

ZantzingerBuilt.com

Zantzinger
ARTFULLY BUILT



DAVID BURROUGHS

*Boxwood hedges and Japanese cedar envelop a Spring Valley garden designed by **Campion Hruby Landscape Architects**. See “Joyful Mix” on page 106.*

Not to dwell on the microscopic elephant in the room, but the past year has put a damper on many pastimes we took entirely for granted pre-covid. When the pandemic struck, our homes became virtual citadels where most of us have sheltered in near isolation instead of hosting parties, play dates, book clubs and game nights.

Now that vaccinations are underway, I hope and dream that we’ll soon be able to share our houses safely with a wider circle of friends and family. After all, it’s high time that we turn up the volume and invite some *joie de vivre* into spaces that have served us well in solitude.

The properties in this issue were all conceived with joy and entertaining in mind. Case in point: a McLean residence reimagined by architect Sarah Armstrong and designer Betsy Delisi, who carved out a gorgeous kitchen and the dining room that graces our cover, not to mention a party-ready lower level where the owners, both amateur musicians, host jam sessions in style.

Three glorious landscapes we spotlight take a unique approach to outdoor living. Miles Barnard conjured an eco-friendly Chestertown habitat centered on a pond-like, chlorine-free pool. Scott Brinitzer transformed a quarter-acre Arlington lot into a series of winsome gardens screened by lush foliage. And a forest oasis in McLean by Joseph Richardson imparted clean lines and order to a slope that culminates in a stream below.

A stream also anchors a Spring Valley landscape covered in the issue. Kevin Campion revived the gardens, where the owners hosted their daughter’s 2019 wedding. Architect Chris Snowber designed a new Tudor-style home on the property with an emphasis on bright, welcoming interiors. Meanwhile, Skip Sroka furnished this “happy house” in sophisticated-not-stuffy fashion—even painting the library bright teal green.

As we dip our toes into what will hopefully be a more convivial season ahead, Skip’s approach feels like a breath of fresh air. As the designer opines, “Balancing what you need to have for comfort with what you want to have for delight is very important.”

Here’s to summer—and its many delights!

SHARON JAFFE DAN
Editor in Chief



ultracraft
custom cabinets for life

URBANEFFECTS
CABINETS

The Possibilities Are Endless

USA CABINET STORE
KITCHEN & BATH DESIGN CENTER

FAIRFAX, VA
(703) 635-3767

Call to schedule an appointment or
stop by one of our nine showrooms

USAcabinetstore.com

CHANTILLY, VA
(703) 349-4611

ALEXANDRIA, VA
(703) 544-9211

ASHBURN, VA
(703) 570-6070

ROCKVILLE, MD
(301) 798-5060

COLUMBIA MD
(410) 892-1722

ANNAPOLIS, MD
(410) 406-7344

HOUSTON, TX
(713) 489-5522

THE WOODLANDS, TX
(281) 746-6141



In-store interior design & 3D modeling services¹ Quick Ship program available²

Alchimie. Corner composition upholstered in fabric and leather, designed by Roberto Tapinassi & Maurizio Manzoni.

Trame. Cocktail table, designed by Alexandre Dubreuil.

Ariane. Console, designed by Studio Roche Bobois.

Made in Europe.



Photo by Michel Gibert, for advertising purposes only. Conditions apply, contact store for details. *Program available on select items, subject to availability.

French Art de Vivre

rochebobo
PARIS

E L L A S C O T T D E S I G N

ESD





M *michaelNASH*[®]
DESIGN BUILD & HOMES
The Ultimate in Luxury[®]

Additions • Kitchens • Bathrooms • Basements
• Outdoor Living Spaces • New Homes

703.641.9800 | michael-nash.com
8630A Lee Hwy, Fairfax, VA 22031
Serving Northern Virginia Only
A Michael Nash Company



BEST OUTDOOR

Lynx began as the vision of a group of people with almost a century of collective experience, who for 35 years were manufacturing top-of-the-line stainless steel products for the commercial food service industry. Lynx has taken that same quality, workmanship, service and innovation and incorporated it into the Lynx Professional and Lynx Sedona collections. The combination of the best materials, fine craftsmanship and original ideas is why Lynx Products are in a class of their own.

To see the full line of Lynx Outdoor products visit <https://www.ajmadison.com/brands/lynx/>

Connect With Us:



Brooklyn Showroom
3605 13th Ave., Brooklyn, NY
718.732.4900

DC Area (NoVa) Showroom
8500 Leesburg Pike, Tysons, VA
202.892.5000

800.570.3355
www.ajmadison.com
sales@ajmadison.com





The Washington Design Center is growing.

AmericanEye

Arc-Com

Baker Furniture*

Century Furniture

Cowtan & Tout

David Sutherland Showroom*

Dedon

F. Schumacher/
Patterson Flynn & Martin

Fabricut

Galleria Carpets & Rugs

Hines & Co.

Holland & Sherry

Holly Hunt

J. Lambeth

John Rosselli &
Associates*

Kravet/Lee Jofa/
Brunschwig & Fils

Michael-Cleary

Osborne & Little

Pindler

Quadrille

Romo

Scalamandré

Stark Carpet

1099 14th Street NW
Washington, DC 20005

designcenterdc.com



**New showrooms*

WASHINGTON DESIGN CENTER

YOUR CENTER FOR DESIGN

Desire . Craft . Experience



Walnut Hill
LANDSCAPE COMPANY

Annapolis | 410.349.3105 | Easton | 410.690.0977

www.WalnutHillLandscape.com



front + center



Katalin Farnady's furniture creations focus on modern, geometric forms. She photographed them in DC's Mellon Auditorium (above), where neoclassical interiors remind the designer of historic buildings in her native Budapest. Pictured: The Ball Base Center Table combines a round metal pedestal with a matte-black top; the sculptural Cube Dining Chair is upholstered in ruched leather. PHOTO: JENNIFER HUGHES



TRENDSETTER

ARTISTIC APPROACH

Katalin Farnady's private-label collection marries modern lines and Old World soul



Katalin Farnady never dreamed of designing a furniture collection, though many of her industry colleagues urged her to give it a go. Until one night in 2019, when she opened her sketch pad. "In 10 minutes, I had 40-some pieces drawn," recalls the Annapolis-based interior designer. "It was in me all along, but I never let it come to the surface."

In March, Farnady Furniture was born. A collection of 25 table and chair prototypes—many handmade locally by Niermann Weeks—expresses the designer's eclectic, modern aesthetic. They also offer a nod to the Art Deco and Art Nouveau influences of her native Budapest. Lighting, mirrors and sculptures are in production, while plans are underway to expand color and fabric options. And in June, Farnady will unveil her creations in EJ Victor at High Point Market. For details, call 443-822-3248 or visit farnadyinteriors.com.

A sense of the unexpected animates creations by Katalin Farnady (left). Clockwise from top, left: the Curved Coffee Table, in black metal and off-white wood; Squared Up and Rolled Up Dining Chairs, with velvet seats and bronzed-metal bases; and the Julia Console, in matte- and high-gloss black wood.

Why did you decide to design furniture? I try to incorporate one-of-a-kind pieces in my work, but they're not always easy to find. And creating furniture gives me an opportunity to tell people who I am as a designer.

What went into your collection's DNA? I like forward-thinking, I like modern and I like the unexpected. But there's always a base you have to touch upon. For me, that's Art Deco and Art Nouveau. I can trace back many of my pieces to architectural details such as a window frame, gate or front door in Budapest.

Where do you find design inspiration? I find inspiration in travel, art, fashion—pretty much everywhere. I am also drawn to geometric forms. For example, swim noodles drifting together in the pool led me to design the Rolled Up Dining Chair. I love the architecture of it.

Who are your console tables named after? I wanted to do something that represents me as a mother as well as my three teenage daughters, Emma, Julia and Adele. The pieces capture their personalities.

How did it feel to send your creations off to High Point? When I first went to High Point 20 years ago, I was blown away by the products and people talking about their designs. Never did I imagine I'd be one of them. —Sharon Jaffe Dan



Lynbrook

FINE RESIDENTIAL CONSTRUCTION

www.lynbrookofannapolis.com

410-295-3313



BUZZ-WORTHY

DESIGN DEBUTS

New industry additions make their mark on the local scene

▲ **BLU DOT**, the popular online furniture retailer, has opened its second East Coast storefront—after the New York flagship—in Georgetown’s design district. The airy, 6,100-square-foot showroom is the brand’s 12th brick-and-mortar location worldwide. It spans two stories, showcasing a full line-up of competitively priced contemporary furniture, lighting and accessories—all designed in the company’s Minneapolis studio. In 2018, Blu Dot received a prestigious Cooper Hewitt National Design Award for product design. 3333 M Street, NW; bludot.com



▲ **DESIGNER LIBRARY** was launched in 2019 as a road-based service bringing a curated collection of brands to designers in the Mid-Atlantic region. Then on April 5, co-owners Janine Guerin and Chad Mitchell opened a chic, 1,700-square-foot Georgetown atelier where they now showcase textiles, wall coverings, rugs, furniture and lighting to the trade. Designers and their clients can view samples and shop for products made by Arte, Elitis, Marika Meyer, Porta Romana, The Vale London, Travers, Made Goods and Marc Philips, to name a few. By appointment at 1667 Wisconsin Avenue, NW; designerlibrary.com



▲ **PILLOW PUNK**, a new venture by Rockville Interiors, allows decorators to design throw pillows for projects online, with pricing updated based on customizable selections ranging from fabric and filling to piping and trim. Pillows in an array of styles are handmade in the company’s workshop, with a five-business-day turn-around. Pillow Punk is currently targeting local designers, but the to-the-trade-only program will soon be marketed nationwide. pillowpunk.com —Julie Sanders

You'll be ready when your dream home is

With a SureStart® Pre-approval,
you'll benefit from:

- Confidence throughout your home search
- A competitive advantage over other homebuyers without a pre-approval
- The ability to act quickly with a complimentary pre-approval letter



We've got a mortgage to fit your needs. Call us today.



Francesca Costello
Home Lending Officer
301-919-9308
francesca.costello@citi.com
citi.com/francescacostello
NMLS# 755930



Sunny Duan
Home Lending Officer
443-374-7356
sunny.duan@citi.com
citi.com/sunnyduan
NMLS# 1272375

Terms, conditions and fees for accounts, programs, products and services are subject to change. This is not a commitment to lend. All loans are subject to credit and property approval. Certain restrictions may apply on all programs. This offer contains information about U.S. domestic financial services provided by Citibank, N.A. and is intended for use domestically in the U.S.

Final commitment is subject to verification of information, receipt of a satisfactory sales contract on the home you wish to purchase, appraisal and title report, and meeting our customary closing conditions. There is no charge to receive a SureStart Pre-approval. However, standard application and commitment fees will apply for the mortgage loan application.



©2021 Citibank, N.A. NMLS# 412915. Member FDIC and Equal Housing Lender. Citi, Citi and Arc Design and other marks used herein are service marks of Citigroup Inc. or its affiliates, used and registered throughout the world.

A perfect solution for all your storage needs.

CUSTOM CLOSETS, GARAGES, HOME OFFICES AND MORE



Capitol Closet Design won Closets Magazine's National Top Shelf Design Award for Best in Walk-in Closets, February 2013



703-827-2700

TYSONS SHOWROOM

8027 LEESBURG PIKE #304 TYSONS, VA 22182
(ABOVE NORDSTROM RACK)

ALEXANDRIA SHOWROOM

376B CALVERT AVENUE ALEXANDRIA, VA 22301

www.capitolclosetdesign.net
Info@capitolclosets.com

20% OFF Plus Free Installation

20 % off any order of \$1000 or more with incoming order at time of purchase only. Not valid with any other offer. Free installation with any complete unit order of \$500 or more. Offer not valid on previous orders. Other restrictions may apply.



Welcome to your forever home built last year



NV KITCHEN & BATH
www.nvkitchenandbath.com

We build beyond perfection



Kitchen

| Bath

| Basement

| Addition

Custom designed and built for you:

- *Exceptional Craftsmanship*
- *Unparalleled Service*

FALLS CHURCH, VA
7185 Lee Highway
Falls Church, VA 22046
703-775-2400

JESSUP, MD
8325 Patuxent Range Rd, Ste A
Jessup, MD 20794
443-329-5600

STERLING, VA
22000 Dulles Retail Plaza #178
Sterling, VA 20166
703-337-0203

KOHLMARK G R O U P



+



New Homes | Additions
Renovations & More
703.764.1200
www.kohlmark.com



WHAT'S AROUND TOWN

THE PHILLIPS COLLECTION

▲ Jacob Lawrence:

The American Struggle—June 26 to September 10 From 1954 to 1956, Jacob Lawrence painted a 30-panel series entitled "Struggle... From the History of the American People." It depicts early decades of the republic through the words and actions of founding fathers as well as enslaved people, women and Native Americans. Assembled for the first time in 50-plus years, the panels—including *We crossed the River at McConkey's Ferry...* (above, left)—can now be seen through a 21st-century lens. phillipscollection.org



AMERICAN VISIONARY ART MUSEUM

▲ The Secret Life of Earth

Through September 5 Baltimore's AVAM commemorates its 25th anniversary with a major exhibit that

inspires delight in nature while exposing disruptions in the planet's delicate ecosystems. Works by 32 artists are on display, including a poster created by Robert Hieronimus for the first Earth Day in 1972 (below, left). Insights provided by scientists, researchers and indigenous stewards of the land add knowledge, perspective—and hope—to the viewing experience. avam.org

GLENSTONE MUSEUM

Faith Ringgold—Ongoing The April 8 opening of this international traveling exhibition marks the beginning of Glenstone's phased reopening. On view in the Potomac, Maryland, museum's Gallery, more than 70 works by this American artist and activist—from story quilts to political posters—depict the beauty and complexity of the African American experience. Glenstone's Pavilions reopen May 6; scheduled visits are required. glenstone.org

VIRGINIA MUSEUM OF FINE ARTS

The Dirty South: Contemporary Art, Material Culture, and the Sonic Impulse

—May 22 to September 6, 2021 This exhibit reveals how aesthetic traditions of the African American South have shaped visual art and musical expression over the past 100 years. More than 140 works are on display, from sculptures, paintings and drawings to photography and film. vmfa.museum

NATIONAL MUSEUM OF WOMEN IN THE ARTS

▲ Highlights from the Collection

June 1 to August 8 An assemblage of more than 150 thought-provoking works of art from the museum's permanent collection includes recent acquisitions, rarely seen works and familiar favorites. One of the pieces on view is *Cascade Crinoline* (above, right) by Jiha Moon, a 2008 ink-and-acrylic work rendered on hanji paper. nmwa.org

HILLWOOD ESTATE, MUSEUM & GARDENS



▲ Roaring Twenties:

The Life and Style of Marjorie Merriweather Post

—June 12 to January 16, 2022 An icon of fashion and style, Marjorie Merriweather Post applied a discerning eye to her storied collections of apparel, exotic jewels, art and décor. This exhibit displays highlights from the Post Cereal heiress's vast holdings, including a silk crepe costume (above) festooned with sequins and rhinestones. hillwoodmuseum.org



▲ Kristine Mays: Rich Soil

June 26 to January 9, 2022 Twenty-nine life-sized wire sculptures by Kristine Mays will enliven Hillwood's 13-acre gardens, appearing amid lush greenery like "spirits rising from the soil," says the artist, reflecting on her work. "Both plants and human beings come and go, reverberating within the cycles of life." hillwoodmuseum.org

—Sharon Jaffe Dan



A.B.E. NETWORKS

Technology Simplified

(301) 495-0964 | abenetworks.com



A.B.E. NETWORKS is the Washington area's premier custom residential and commercial technology design and integration firm. Our award winning organization utilizes premier products fused with your home's decor resulting in a top tier personalized experience.

Custom Automation Solutions | Audio/Video Systems | Network + Data Services | Integrated Security
Lighting Control Systems | Motorized Window Shades | Energy Monitoring | Infrastructure Management

CREATING CAPTIVATING HOME ENVIRONMENTS FOR OVER 38 YEARS

JUST FOR YOU. MADE BY US.



Interior Design by Haus Interior Design
Potomac, Maryland

Family owned since 1982, Jack Rosen Custom Kitchen, Inc., offers an opulent array of cabinetry and kitchen accessories to create the perfect setting for every moment in time!



Jack Rosen
CUSTOM KITCHENS, INC.

CULINARY | CLOSETS | HOME OFFICES | ENTERTAINMENT

www.RosenKitchens.com

Showroom: 12223 Nebel Street, Rockville | 240.292.7121

Voted best Kitchen Design Firm by readers of Bethesda Magazine, 2011, 2016, 2018 & 2020.



HAMMOND
WILSON



Timeless.
Artful.
Architecture.

410 267 6041
hammondwilson.com

INTERIOR CONCEPTS INCORPORATED



A FULL SERVICE DESIGN FIRM

2560 RIVA ROAD ANNAPOLIS, MARYLAND
410.224.7366 | 301.970.8009

INTERIORCONCEPTSINC.COM | @INTERIORCONCEPTSINC



LIVE BRIGHT



LIVE AUTHENTIC



LIVE BOUNDLESS



LIVE BOLD



THE CREATIVE DIFFERENCE

A seasoned team of real estate agents offering clients an imaginative approach to marketing their homes and assisting buyers in finding the perfect property. Our backgrounds in architecture, interior design and construction provide a creative difference.

THEO & PARTNERS

TTR | Sotheby's
INTERNATIONAL REALTY

1206 30th St NW | Washington, DC 20007

www.theoandpartners.com

Licensed in DC, MD & VA



- THEO ADAMSTEIN
- DONNA MARTIN
- DEBRAN MCCLEAN

tadamstein@ttrsir.com

202.285.1177

ELEVATE EVERYTHING



ADU

Your Appliance Source

Annapolis, MD: 410-267-7110 | Baltimore, MD: 410-789-8000 | Easton, MD: 410-819-8900 | Gaithersburg, MD: 240-650-6000
Mechanicsville, MD: 301-274-2570 | Takoma Park, MD: 301-608-2600 | Chantilly, VA: 703-263-2300 | York, PA: 717-845-6500
ADU.COM

high style



FASHION

PHOTO: KIMBERLY DEAN

BESPOKE GLAM *A Charm City designer branches out*

This silk moire corset and mermaid skirt designed by Ella Pritsker make a bold and elegant statement. The Baltimore couturier, who has dressed clients in custom ball gowns and power suits for more than 20 years, will soon launch Ella Sport, a resort collection that, she explains, embodies “the kind of golf clothes Coco Chanel would have worn if she played golf.” ellapritsker.com



ABOVE: REY LOPEZ



DINING

HOT SPOT

Nina May elevates local bounty, indoors and out

After making a pre-pandemic splash in its Shaw location, Nina May complemented its indoor seating (left) with a year-round patio pergola (bottom, left) in January. General manager Danilo Simic and chef Colin McClimans (below, left to right) wow guests with ever-changing brunch and dinner menus focused on seasonal ingredients sourced within 150 miles of DC. Recent standouts (above): Lemon & Thyme Roasted Pennsylvania Chicken and the Nina May Gin & Tonic, infused with rose water and orange essence. 1337 11th Street, NW; 202-518-3609. ninamaydc.com





Architecture: Robert M. Gurney, FAIA, Interior Design: Baron Gurney Interiors, Photography: © John Cole



Architecture: Wiedemann Architects LLC, Photography: © Hoachlander David Photography LLC



Architecture: Cless Architects PC, Interior Design: Huntley & Co., Photography: © Walter Smalling Photography



Visit horizon-group.com



TECHNOLOGY

LIFE AQUATIC



Le StandUp, a paddleboard made in France, brings a whole new dimension to the sport—day and night. Its lightweight, carbon frame boasts transparent panels that give riders an up-close view of ocean life. Double rows of battery-powered LEDs on the bottom of the board illuminate the seabed after dark. Price on request. loeva.me



SEEING STARS

Stellina, a next-generation telescope made by the French company Vaonis, lets stargazers view planets and galaxies on a monitor and capture high-resolution images that can easily be shared via a companion mobile app. At 15 pounds and 19 inches tall, the battery-powered scope is compact enough to take on the road. \$3,999. vaonis.com



VIRTUAL SOMMELIER

An AI-enabled wine-management system, WineCab scans labels for easy tracking and secures bottles in temperature- and humidity-controlled display cases. Its high-speed robotic arm retrieves a selection in 15 seconds and loads up to 24 bottles in seven minutes. Customizable in an array of millwork and finish options, WineCab is available in six-, 11- and 15-foot models; the latter can house more than 600 bottles. winecab.com —*Sharon Jaffe Dan*

Vibrant and Modern Design



Prospective buyers loved the cabinet quality and features that Jennifer Gilmer provided for this stunning kitchen at Garnett Drive in Chevy Chase, Maryland. From the paint quality to the walnut drawer bottoms, and an overall well thought out design, this was a superb kitchen.

Designed by **Jennifer Gilmer**
Listed and Sold for \$5.1M by Carl Becker
Photography by Peak Visuals

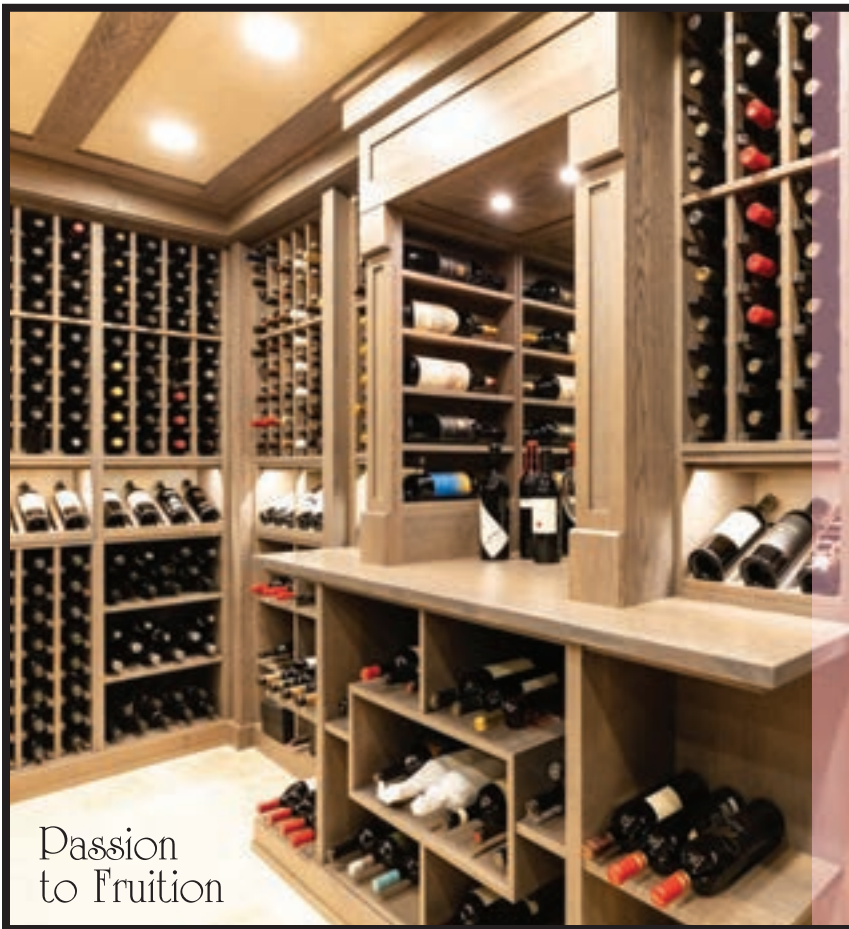


Visit one of our three locations
6935 Wisconsin Ave. Chevy Chase, MD | 1 East Dover St. Easton, MD | 44050 Ashburn Shopping Plaza #175, Ashburn, VA
Call our main number or email us to set up your complimentary consultation
301-657-2500 ext. 206 | info@gilmerkitchens.com | www.gilmerkitchens.com



DESIGN • BUILD • RENOVATE

Architecture & Design | Custom Homes | Additions | Kitchens | Bathrooms
eisenbrandtcompanies.com • 410-925-6749



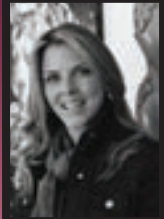
Passion
to Fruition

wine
cellars
by LISA

Love Wine? Love sharing it
with family and friends?

Award winning designer Lisa Weiss
will discover your wine style and
create the perfect atmosphere to
share your passion for wine. Would
you trust the design and build of
your wine cellar, to just anyone?

WineCellarsByLisa.com
703-992-WINE(9463)





MAKE THE MOST OF HOME



YOUR LOCAL SHOWROOM: WASHINGTON DC | ALEXANDRIA | ANNAPOLIS | CHANTILLY | ROCKVILLE | WINCHESTER

Shop online or schedule a personalized appointment from the comfort of your home today at [fergusonshowrooms.com](https://www.fergusonshowrooms.com).



©2021 Ferguson Enterprises LLC 0321 2591124



SIMPLE + SERENE

*A retired couple embarks
on a new life in an airy
Chevy Chase condo boldly
reimagined by designer
Sandra Meyer*

Text by SHARON JAFFE DAN

Photography by ROBERT RADIFERA

The prospect of downsizing from a grand, Shaker-style home to a two-bedroom condo was daunting enough. But a couple relocating from Connecticut also had to contend with woefully outdated interiors in their new Chevy Chase digs. So before moving south, the twosome hired designer Sandra Meyer to overhaul the entire residence and outfit it in fresh, modern style.

“It was a gut renovation,” recalls Meyer. “We took the apartment down to the studs and replaced all the floors, doors and trim.” The makeover focused on creating comfortable yet chic spaces that could play multiple roles. A game table and reading nook add functionality to the living area, while the TV room houses a sleep sofa to accommodate overflow guests.

The owners envisioned a streamlined departure from the traditional look of their former manse, so Meyer pushed the décor in a modern direction. “I’ve found that when downsizing, many of my clients drastically change their style,” she reports. “I did one huge presentation for these clients and they didn’t say no to a thing.”

When they finally moved into the finished home, the owners were thrilled with every space, from the living area that revolves around entertaining to the sunny kitchen complete with bespoke cabinetry. Recalls Meyer, “They were pretty blown away.”

Renovation & Interior Design: **Sandra Meyer**, Ella Scott Design, Bethesda, Maryland. Renovation Contractor: **Ted Flores**, FRP Contractors, Gaithersburg, Maryland. Millwork Fabrication: **D. William Sapp**, Definitive Resources, Brinklow, Maryland. Styling: Charlotte Safavi.



Meyer selected a striking blue-and-white palette in the main living area (opposite) housing comfy A. Rudin chairs and matching sofas on a Laloi rug. An Interlude game table (this page) is ready to host guests.



“When downsizing, many clients drastically change their style.” —SANDRA MEYER



A photograph of Istanbul's Hagia Sophia, taken by the husband, makes a bold statement in the dining room (left). The hammered-steel base of the Julian Chichester table and a hand-knotted, wool-and-silk rug from C. G. Coe & Son add subtle contrast. Meyer redesigned the kitchen (above) with custom walnut base cabinetry and white upper cabinets to make the ceiling appear higher.

What role does texture play in the living room?

I used a combination of velvets, linens and reflective fabrics throughout. The living room sofa is covered in Zimmer + Rohde velvet while accent pillows in a Great Plains viscose cotton add sheen. There's a simplicity to the room because the colors are very even; if we hadn't added so much texture, it wouldn't look as sophisticated.

Why was this apartment renovation tricky?

In this project, the ceilings are cement so we couldn't add recessed lights. I had to get creative.

Do you employ lighting to create drama?

Lighting is a central part of a room, especially when you're going for a statement.

I love the Moooi fixture we found at Illuminations for the dining room. Little LEDs come out of the bottom and reflect on the mesh above.

How did you visually expand the kitchen height?

The kitchen has low ceilings, so I chose white upper cabinets that don't extend all the way to the top, which makes the space feel airier. And I didn't use hardware on the upper cabinets so they'd look super-clean.

What drove your countertop and backsplash choices?

We selected white quartz, which is very versatile, for the countertops, and a marble backsplash to add a bit of movement and tie it all together.



A moody vibe prevails in the powder room (above) thanks to its shimmering graphic wallpaper. The TV room (below) houses a custom oak built-in and cozy furnishings, from an American Leather sleep sofa to Hickory Chair ottomans covered in suede.

What is key to a successful kitchen redo?

I look at kitchens as a whole in terms of style and function. I'm a stickler on making sure you know where everything is going to go and how you're going to use it.

Explain your strategy on designing built-ins outside the kitchen?

I think about function first and then I determine whether I want a wood or a painted finish. This decision depends on whether you prefer a built-in to stand out like a piece of furniture or recede to showcase what's on display.

Is it okay to mix woods?

In a palette on a board, we designers get concerned about things working together perfectly. But in reality, I think just about any woods can work together. After all, woods are together in nature.

How did you take the powder room in a glam direction?

Often, clients who come to me for a cleaner aesthetic want to go all out in their powder rooms. In this project, it

was about making the powder room super moody. We selected Phillip Jeffries wallpaper, which is very reflective, and I painted the ceiling gray.

What drove your design of the owners' bedroom?

They wanted something serene. My goal was to make sure the room wasn't too cold, given all the windows. We draped them like crazy in a sheer Romo fabric with stripes that add a bit of interest. All of the fabrics have a ton of texture and the wall-to-wall carpet is tonal but has an abstract pattern.

Why was the owners' bath a challenge?

When we ripped out an old Jacuzzi tub in the space, we realized the drain had been raised. Fortunately, we were able to drill down into the cement to get it out.

Explain your approach for clients who are downsizing.

As I did in this apartment, it's important to make sure that every space has multiple uses.





Home is where the heart is.

When staying safe means staying home, we're reminded of what matters most. At ANTHONY WILDER, we are in the business of creating spaces that provide comfort when it's needed. From home repairs to renovations, we mind every detail, so you can simply live—and love—the life you've built.



ANTHONY WILDER

ARCHITECTURE | INTERIORS | CONSTRUCTION

ANTHONYWILDER.COM 301.907.0100



ASK SANDRA

WHAT FURNITURE POSSESSIONS WILL YOU KEEP FOREVER?

I'll never part with my 1960s orange vellum-covered side tables from David Bell Antiques.

SHARE YOUR FAVORITE RETAIL SOURCES.

Crump & Kwash in Baltimore and Coil + Drift and Fair in New York. And CB2 for accessories and kids' furniture.

HOW DO YOU KICK OFF A PROJECT?

I don't have a rule. Sometimes I start brainstorming floorplans, then develop an idea for furniture. Or I'll start with fabrics.

BOLD MOVE YOU WANT TO TRY?

I'd like to use more colors—like burgundy, green or turquoise—in bathrooms I design.

WHAT MAKES OR BREAKS AN INTERIOR?

Lighting is my favorite thing. There are certain elements you might not notice in a room, but a light is hard to miss. When considering where to spend, lighting is not where you should cheap out.

PORTRAIT: STACY ZARIN GOLDBERG





Clockwise from opposite, top: In the owners' bedroom, the bed and side chair are both by Theodore Alexander. The bed is dressed in Romo fabric while pillows in Holly Hunt cut velvet grace the chair. On the opposite wall, a custom built-in and a desk create a home workspace. The owners' bath boasts a custom oak vanity, shower tile from Architessa and a sculptural tub.



Rockville
Est. 1971
INTERIORS

Drapery

Reupholstery

Pillows

Fabrics



5414 Randolph Rd. Rockville 20852
Visit Showroom Mon-Sat 9:30AM-6PM • 301-424-1900
www.RockvilleInteriors.com



Basement Remodel

Photo: Darko Zagar



DESIGN + BUILD

703.243.3171 | TRIVISTAUSA.COM

2021 ARLINGTON MAGAZINE BEST BUILDER | 2020 GREEN HOME AWARD | 2021 NARI CONTRACTOR OF THE YEAR

DESIGN VISIONARY



Q&A

Joffrey Charbonnier & David Zein

The owners of the Ligne Roset/Flos showroom highlight the best in innovative, high-end European furniture and lighting.

How has the pandemic affected the future of design?

New designs will emphasize wellness, integrating popular green designs with wholesome, feel-good products and architecture.

What changes from the past year are here to stay?

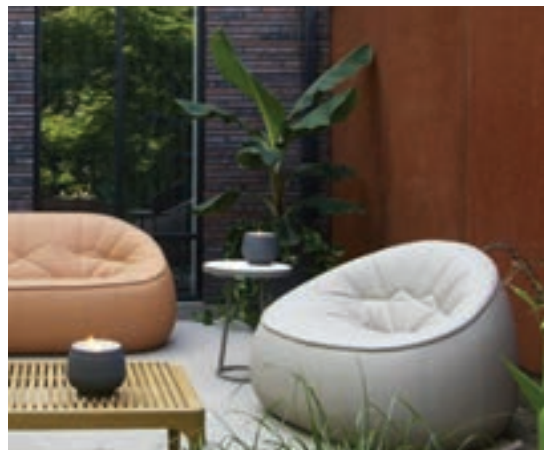
Enjoying more time at home with less commuting. The den will become a permanent home office.

Explain how entertaining at home will evolve?

The pandemic has made outdoor entertaining the new norm. Clients are seeing their outdoor spaces as extensions of their homes. We saw this in the explosion of popularity fire pits and outdoor heaters are experiencing. This trend is likely to continue, and to develop with better furnishings, pergolas, outdoor kitchens and pool pavilions in both residential and commercial projects.

Products on offer at Ligne Roset/Flos combine nonconformity with comfort. The Chiara floor and table lamps (right) were designed by Mario Bellini for Flos; and the Ottoman outdoor armchair and sofa (far right) was designed by Noé Duchaufour-Laurance for Ligne Roset.

LIGNE ROSET / FLOS
ligneroset-dc.com



DESIGN VISIONARY



Q&A

Bonnie Ammon

Interiors by Bonnie Ammon reflect each client's personality and style, with attention to detail and commitment to quality.

How has the pandemic affected the future of design?

Our homes have become a place to work, learn, exercise and relax. Multi-use areas allow families to function together while also providing a retreat at the end of the day. These areas are not going away but are becoming more popular.

What is your philosophy on home as a sanctuary?

Our surroundings have a profound effect on our physical and emotional well-being. Home should be a place where we feel safe, calm and rejuvenated when we walk through the door. If you don't have that happy-to-be-home feeling, it's probably time for a redo.

What changes from the past year are here to stay?

Since the pandemic, I've noticed my clients wanting more and more color. The day of the all-neutral interior is ending and I think color is here to stay.

Bonnie Ammon designed a dining room (right) with bright orange hues that evoke a feeling of happiness.

A multipurpose room (far right) answers all the requirements for gathering, eating and studying, with a seven-foot table, built-in storage and a comfortable window seat overlooking wooded grounds.



BONNIE AMMON INTERIORS
bonnieammoninteriors.com

DESIGN VISIONARY



Q&A

Matt Rowan

Matt Rowan of Dominion Lighting has a passion for lighting. His feeling is based on the understanding that light does more than just illuminate your space—it defines how you feel.

How has the pandemic affected the future of design?

It has definitely shifted our focus toward our homes, forcing a reassessment of whether our spaces work. Does my home make me feel comfortable and centered—even if the world outside doesn't?

What technologies have become a must at home?

LEDs offer us much more flexibility with design since they can take on new shapes and fit anywhere. Paired with integrated smart controls, changing the feel in a space can be as simple as using your voice.

How are you making clients' homes healthier?

Light can deeply affect our health, particularly mood and sleep cycles. We now counsel our clients on "circadian-attuned lighting," which replicates the shifting color and intensity of sunlight through the day.

In the Dominion showroom (right and far right), openness greets visitors, in lieu of the traditional overwhelming clutter of an old-school lighting store. An expansive, open "runway" connects dual entrances and offers a chance to orient and focus on the galleries and vignettes that lie beyond.

DOMINION LIGHTING
dominionlighting.com



DESIGN VISIONARY



Q&A

Architect Tatyana Swift, AIA

What changes from the past year are here to stay?

Many of my clients planned additions and converted decks and lower levels into offices and living space. These are great ways to increase square footage without the expense of buying a larger home.

What technologies have become a must at home?

Must-have technologies include new materials that acoustically isolate home offices; heat-recovery ventilators that provide ventilation without increasing utility bills; and secure WiFi products that protect and expand Internet service throughout the home.

How are you making clients' homes healthier?

Indoor air quality is a major factor. Because materials that give off Volatile Organic Compounds (VOCs) degrade health, I select zero- or low-VOC materials and furniture. Smart ventilation is also key!

Welcome to wellness: An owners' bath renovation (right) incorporates hydrotherapy at its best, combined with the convenience and efficiency of digital shower technology. Swift converted a deck into a versatile living space (far right) complete with a fireplace and eating and lounging areas.

TATYANA SWIFT
ARCHITECTURE & DESIGN
 tatanaswift.com



DESIGN VISIONARY



A custom, 19-foot-tall mural by Dee Lenehan conjures the sea in the foyer of an Ocean City getaway (above). In the same house, the clean-lined, second-level family room (far right) boasts a built-in wet bar surrounded by custom brass-and-glass shelving and a stylish, functional corner banquette.

CHRISTIE LEU INTERIORS
christieleuinteriors.com



PHOTOS: STACY ZARIN GOLDBERG (ABOVE & RIGHT)



Q&A

Christie Leu

Our team transforms homes into sanctuaries. We merge classical architecture with a contemporary aesthetic, adapted for today's modern lifestyle.

How has the pandemic affected the future of design?

Despite the past year's events, there have been silver linings. Our industry is busier than ever. We are moving past gray into color. Creativity and hope are blooming!

What changes from the past year are here to stay?

The work-from-home culture will integrate itself into our lives for years to come. Home offices are taking the place of little-used guest rooms. In future, we'll be able to earn a living in more beautiful, better-designed environments.

Explain how entertaining at home will evolve?

We have acclimated to year-round outdoor dining and entertaining. Furnished spaces are exploding out into our yards. We'll be adding more seating areas, landscapes and fire features to prolong the enjoyment of early spring and late fall days.

DESIGN VISIONARY



Q&A

Margery Wedderburn

Margery Wedderburn's high-end residential and commercial design firm specializes in new builds, full renovations and resort and second homes.

How has the pandemic affected the future of design?

People are rethinking what "home" means to them. While incorporating advances in technology, they also want their homes to express more of who they are rather than just a collection of objects they've gathered.

What is your philosophy on home as a sanctuary?

The home as a sanctuary has always been central to our design philosophy. We ask our clients: What do your interiors communicate to you? Our spaces connect, relax, energize and inspire—often within the same home.

How will the "new normal" impact open floor plans?

We adapt to the new reality of more people being at home through the use of furniture plans, screens, wall colors and so on. This is how we create individual niches so people can function separately in the same space.

The dining room of a beach house (right) channels its seaside locale via shiplap walls and a natural-wood sunburst mirror; a custom dining table is paired with woven chairs. An inviting guestroom (far right) layers new and vintage elements, nautical motifs and blue accents.

**MARGERY WEDDERBURN
INTERIORS, LLC**
margerywedderburninteriors.com



PHOTOS: TIMOTHY BELL (LEFT & RIGHT)

DESIGN VISIONARY



Q&A

Hannah Triebel

Designs by Hannah Triebel of Sunnyfields Cabinetry are luxurious and creative, emphasizing aesthetics and functionality.

What is your philosophy on home as a sanctuary?

Your home should be functional and also have “special moments.” These can be as simple as dressing up a fireplace for a cozy evening or adding color and texture to a wet bar to create a restaurant experience.

How do you create multi-functional spaces?

The way in which I design a multifunctional yet cohesive space is driven by my client’s lifestyle and priorities. For example, what looks like a stand-alone cabinet could be a wine fridge or even a hidden desk area for working from home.

Explain how entertaining at home will evolve?

We are moving away from formal dining and living rooms, towards a more informal and personal way of living. I aim to create spaces that feel both intimate and warm but still sophisticated.

A sleek spa bath of stone and wood (right) is both functional and luxurious, a relaxing retreat at home complete with a sauna.

A traditionally styled wet bar beckons (far right), with cabinetry custom fitted to frame an elegant arched window.



SUNNYFIELDS CABINETRY
sunnyfieldscabinetry.com

DESIGN VISIONARY



Q&A

Avi Benaim

A.B.E. Networks, founded by Avi Benaim, is the premier source for integrated technology systems, boasting a design-centered approach that focuses on current needs and future desires.

What changes from the past year are here to stay?

The demand for robust home-wireless networks grew exponentially this year. Video conferencing, virtual happy hours, multiplying streaming services, smart exercise equipment and other IoT devices will remain.

Explain how entertaining at home will evolve?

Outdoor spaces are the primary location for socially distanced gatherings. Weatherproof TVs, outdoor Wi-Fi access points and landscape audio and lighting systems all transport entertainment outside.

What technologies have become a must at home?

An essential part of expanding the utility of the home is dressing our spaces with light. Motorized window treatments and automated light fixtures can transform a room at the press of a button.

Motorized window treatments, an automated lighting system, whole-house audio and video entertainment are all controlled from an on-wall iPad (right). A backyard patio (far right) boasts the latest in outdoor technology: in-pool color-changing lights; a weather-proof TV; landscape audio; hardscape LED light fixtures; and a remote-controlled gas fire pit.



A.B.E. NETWORKS
abenetworks.com

DESIGN VISIONARY



Q&A

Phil Kelly

As head of McHale's Virginia residential design/build division and company COO, Phil Kelly, integrates interior and exterior spaces to create beautiful custom outdoor living spaces.

How has the pandemic affected the future of design?

The pandemic has streamlined the use of technology to share ideas and inspiration. While nothing can replace in-person connections, virtual presentations will become more common, allowing for greater efficiency in our workday.

What is your philosophy on home as a sanctuary?

Nature is synonymous with peace and relaxation. Outdoor living spaces can be a sanctuary, as visual and acoustic elements offer peaceful views and soothing sounds.

How do you create multi-functional spaces?

It takes imagination and creativity to produce multi-functional spaces, and flexibility on the client's side in terms of their use. A lawn can serve as a bocce court or a perfect spot for your annual crab feast.

Managed by Phil Kelly (right), McHale's carpenters and masons constructed an arched stucco wall, water feature and pool house (above), which mimic details of the main residence. A view from the peninsula in the covered, heavy-beamed outdoor kitchen overlooks the pool, privacy wall and pool house (far right).

MCHALE LANDSCAPE DESIGN
mchalelandscape.com



DESIGN VISIONARY



Q&A

Jonas Carnemark
CRD. CLIPP

My design philosophy centers on functional beauty—minimal, modern, warm and welcoming.

What is your philosophy of home as sanctuary?

This past year has opened up unused parts of the house for many—with new emphasis on quality over quantity. As personal wellness becomes the new luxury, home as sanctuary will take hold and change our approach to building.

What technologies have become a must at home?

Technologies that push on the wellness concept are in high demand. I am excited to bring my experience working at the forefront of accessibility and sustainability to the work of helping clients live healthy lives in the post-pandemic world.

What changes from the past year are here to stay?

Homeowners will continue to seek out design programs and products that enhance connectivity to family, friends and the flow of information. Those connections have grown in importance during covid.

Designated work zones, double islands, wider aisles and a gracious seating area make seamless—and socially distanced—interaction possible in a communal kitchen (far right). A soothing home spa (right) elevates everyday rituals with a shower that puts steam quality, density and hygiene, as well as chromatherapy and aromatherapy, at the touch of an intuitive screen.

KONST

konstsiematic.com | konstunion.com



PHOTOS: RON BLUNT (LEFT & RIGHT)

DESIGN VISIONARY



Q&A

James McDonald

James McDonald specializes in luxury single-family homes of all sizes, from jewel-box custom infill residences to estate homes of note.

How has the pandemic affected the future of design?

I think today's health crisis is changing some aspects of how people view their homes. The desire for areas for family gathering and entertaining is competing with the need for individual workspace—from spouses who both require their own home offices to multiple kids who need dedicated areas for homework, crafts, etc. Everyone needs that separate work environment.

What is your philosophy on home as a sanctuary?

People always want to see their home as a sanctuary, a place where they can step away from the outside world or to invite a group of close friends over. These spaces are becoming more casual and open with a lot more connection to the exterior environment.

Left to right: A custom home in McLean is enhanced by French architectural flourishes. A warm mix of materials, from cedar shakes to stone, imparts interest and warmth to a traditional custom home in Spring Hill.

**JAMES MCDONALD ASSOCIATE
ARCHITECTS, PC**
jamesmcdonaldarchitects.com



DESIGN VISIONARY



PHOTO: CHRISTY KOSNIC

Q&A

Heather Blleloch

Cornerstone Kitchen & Bath's Heather Blleloch creates spaces that are as functional as they are beautiful using innovative space-planning and cabinetry design.

How has the pandemic affected the future of design?

We are focusing more on simplifying spaces, making them functional but flexible, with no wasted spaces. We are designing smarter and more creative storage to reduce clutter and allow for buying in bulk.

What changes from the past year are here to stay?

Meeting with clients virtually. The more flexible scheduling appeals to both me and my clients. It can be easier to arrange a Zoom than an in-home or showroom meeting - and I can wear my slippers!

How do you create multi-functional spaces?

I'm designing spaces that aren't highly specific to a particular use, like large islands that multi-task as workspace and dining. And Murphy beds are enjoying a renaissance, allowing for additional workspace in bedrooms.

Dynamic tile and wallpaper surfaces distinguish a stylish bath with a roomy, glass-enclosed shower (right). Pops of blue enliven a chic kitchen (far right) with crisp-white cabinets and a custom hood as a focal point.



PHOTOS: STACY ZARIN GOLDBERG (LEFT & RIGHT)



CORNERSTONE KITCHEN & BATH
ckbva.com



Wheat's 

DESIGN | BUILD | MAINTAIN

WHEATS.COM | 703.879.2631

cool+collected

The Bon Vivant pouf by JANUS et Cie doubles as a seat and a table. A reticulated foam body promotes water drainage, while the removable crocheted cover is easy to clean. Available in six finishes and three sizes at JANUS et Cie in Cady's Alley; pictured in new Cool Grey and Cyan Melange shades, with Patricia Urquiola's Anatra sectional. janusetcie.com



AL FRESCO FLAIR

Hot new products foster fun in the sun

Text by JULIE SANDERS

► Designed by Michael Koenig for Ligne Roset, the Giardinetto planter is crafted of galvanized-steel sheets suitable for outdoor use, then finished in an iridescent lacquer the color of anthracite. The planters come in a range of sizes; convenient handles make them eminently portable. Available at Ligne Roset in Upper Georgetown. lignerose-dc.com



▲ Pictured in a Carbon finish, Blu Dot's clean-lined Lookout Outdoor Lounge Chair combines a tubular aluminum frame with all-weather rope woven to form the seat and back. Shown here with the powder-coated aluminum Circula Tall Side Table, which boasts adjustable feet to keep its base level. Both pieces are available at Blu Dot's Georgetown showroom. bludot.com





▲ The Borea collection by Piero Lissoni for B&B Italia includes a chic sofa (pictured) that pairs a slender aluminum frame with generous cushions. Sustainable padding is made from recycled PET plastic bottles; upholstery in solid or striped cotton canvas evokes a nautical vibe. Available at B&B Italia in Georgetown. beitalia.com



▲ With its delicate curves, the Pekin Floor Lamp casts an elegant shadow. Designed by Gabriel Teixidó for Roche Bobois in an indoor and an outdoor version; both are made of fiberglass and metal, but the outdoor fixture dons a shade of durable Batyline to withstand the elements. Available at Roche Bobois in DC and Tysons. roche-bobois.com



◀ Warm up on chilly evenings with Frontgate's Classic Copper Fire Pit. Its heavy-gauge copper basin is designed to withstand extreme heat and weather; an iron grate ensures fires stay well-ventilated. Measuring 40 inches in diameter, the basin sits atop an attractive, powder-coated iron base. frontgate.com

▼ Kingsley Bate's Charlotte collection offers a hardy spin on classic garden seating, with aluminum frames hand-painted to resemble rattan and all-weather wicker seats and backs in an airy, open-grid weave. Pictured with the teak Avalon table, which is slatted for drainage and comes two sizes: a 41-inch square and a 73-inch rectangle. kingsleybate.com





www.kanelandscapes.com
(703) 803-3146





AQUA-BRIGHT
IRRIGATION & ILLUMINATION

Lawn & Landscape Irrigation Systems

Low Voltage LED Outdoor Lighting Systems

7-Year Warranty Including Parts & Labor

We Service Existing Irrigation & Lighting Systems

Holiday Lighting Displays

Landscape Drainage Solutions

410-489-9009
info@aquabrightllc.com
AQUABRIGHTLLC.COM

cool+collected



▲ Relax poolside on the low-profile Summit chaise, designed by Lisa Clark Jenks for Country Casual Teak. The teak frame supports a mesh sling made of fade-resistant, waterproof polyester/polyvinyl in Cloud or Taupe (pictured). The stackable lounges feature four seat-back positions and can easily be moved on rear wheels. Find at Country Casual Teak in Gaithersburg. countrycasualteak.com



▲ Sonoma Forge's Waterbridge Exposed Shower System can be installed indoors or out. The industrial-style, handcrafted fixture is distinguished by exposed pipes and joints forming an adjustable rain head, hand wand and foot wash—perfect for beachgoers looking to rinse off the sand. Available in a choice of finishes, in wall- (pictured) or floor-mount versions. sonomaforge.com

▼ Edgestar's stainless-steel outdoor undercounter icemaker emphasizes versatility, with reversible doors, adjustable legs and front-facing vents to accommodate freestanding or built-in installation. The appliance, which moves easily on lockable castors, can produce as much as 50 pounds of ice a day and stores up to 25 pounds. Available at area Ferguson showrooms. edgestar.com; fergusonshowrooms.com

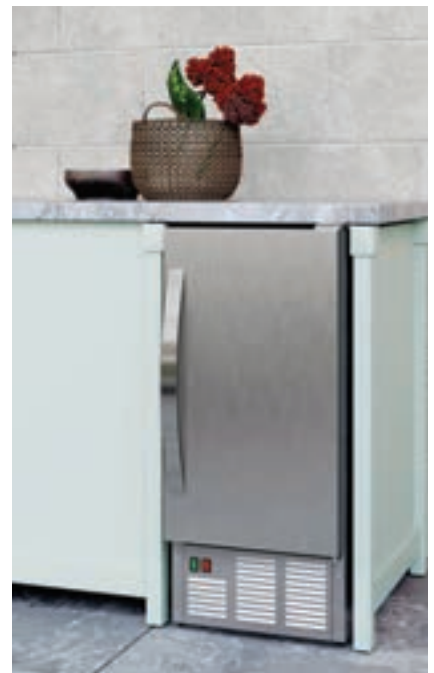




Photo: Judy Davis

703.430.6001
surroundslandscaping.com





▲ The Lynx L42TR 42-Inch Professional Series Grill caters to the al fresco chef with such bells and whistles as a smoker box, a dual-position rotisserie—and 1,200 square inches of grilling surface. An infrared burner reaches temperatures from 300 to 1,000 degrees. Available at A.J. Madison in Tysons. ajmadison.com; lynxgrills.com

▼ Yorkstone pavers from Architessa convey the timeless look of natural stone with the durability of porcelain. Measuring twice the thickness of indoor tile, the new pavers are designed for outdoor applications. They come in 24-by-24- and 16-by-32-inch formats and eight colors; Mixed Quartzite is pictured. Available at area Architessa locations. architessa.com ■



TECHO—BLOC
INSPIRING ARTSCAPES



www.thestonestore.com
1-888-766-4242

EXPLORE TECHO-BLOC ON DISPLAY AT THE STONE STORE

PAVERS • WALL SYSTEMS • STONE VENEER • TRAVERTINE & MARBLE
BOULDERS • DECORATIVE & CRUSHED STONE • SAND & GRAVEL
OUTDOOR LIVING ELEMENTS • LIGHTING • MULCH • AND MORE



Refresh. Renew. Relax.

CHLA LANDSCAPE ARCHITECTS

campionhruby.com | 410.280.8850

Your Favorite Landscape Design
Company Just Got Even Better...



After 40 years of service we are retiring our name

BotanicalDecorators™

We're Proud to Introduce...



**CAHILL
LAND
DESIGN**



**CAHILL
DESIGN
BUILD**



**CAHILL
INTERIOR
DESIGN**

Landscape Architecture

Complete Build Services

Horticultural Maintenance

Custom Pools & Spas

Custom Design Services

Renovation • Historical

New Build Construction

Architectural Consulting

Individualized Design

Unique Product Procurement

Custom Installations

Special Event Planning

Contact us today... P 202-363-4626 www.cahillcompanies.com customerservice@cahillcompanies.com



The Mark of Excellence



LA LEWIS AQUATECH

ELEGANT OUTDOOR LIVING

LEWIS-AQUATECH.com

703.631.2800 | 301.881.9066

Custom Swimming Pools • Landscapes • Pool Houses
Pergolas • Terraces • Outdoor Kitchens • Fireplaces • Renovations





COLAO & PETER

Luxury Outdoor Living

Pools & Spas | Carpentry | Landscaping | Maintenance | Landscape Architecture

Expect more
FROM YOUR LANDSCAPE



Call to explore your landscape's highest potential
703-553-0123 | www.colaopeter.com





GTM
ARCHITECTS

7735 old georgetown road, suite 700
bethesda, md 20814
240.333.2000

GTMARCHITECTS.COM



ZEN Associates, Inc.
the balance of art, science, and nature

Landscape Architecture
Interior Design
Design + Build
Boston | Washington DC
zenassociates.com | 800.834.6654

Architect: Randall Kipp Photographer: Maxwell MacKenzie



DESIGN. BUILD. ENJOY.

This is the art of
outdoor living.

est.  1982

D. A. DUNLEVY

expertly crafted outdoor spaces

Allow us to design a luxury retreat, tailored perfectly for your lifestyle. Our award-winning Landscape Architects and Designers bring the functionality of indoor spaces to the beauty of the natural environment, turning any greenspace into a living showcase. Whether for entertaining or personal refreshment, we set the stage for life's moments.

dadunlevy.com

SHOWCASE

OUTDOOR LIVING



Walnut Hill Landscape Company
walnuthilllandscape.com



McHale Landscape Design
mchalelandscape.com



D. A. Dunlevy
dadunlevy.com



Jennifer Horn Landscape Architecture
jh-la.com

FINE EARTH LANDSCAPE DESIGN / INSTALL



WINNER OF OVER 150 REGIONAL
AND NATIONAL AWARDS



SERVING DC, MD & VA FOR 40 YEARS

Professional Landscape Design Beautiful Plantings Patios, Terraces, and Walkways
Masonry and Wood Walls Wood Decks and Arbors Ponds and Waterfalls

DC/MD/VA 301-972-8810
WWW.FINEEARTH.COM

SHOWCASE

OUTDOOR LIVING



Kane Landscapes
kanelandscapes.com



Colao & Peter
colaopeter.com



Fine Earth Landscape Inc.
fineearth.com



Aqua-Bright
aquabrightllc.com

JENNIFER HORN LANDSCAPE ARCHITECTURE

jh-la.com
202.573.7581



botdec.com

LOOK FOR
OUTDOOR LIVING IDEAS
AT
HOMEANDDESIGN.COM

DC • MD • VA
HOME&DESIGN
THE MAGAZINE OF ARCHITECTURE AND FINE INTERIORS



LANDSCAPES
for MODERN LIFE

JOSEPH RICHARDSON
LANDSCAPE ARCHITECTURE JRICHARDSONLA.COM

SHOWCASE

OUTDOOR LIVING



ZEN Associates, Inc.
zenassociates.com



Scapes, Inc.
scapesinc.net



Wheat's Lawn & Custom Landscape, Inc
wheats.com



Surrounds Inc
surroundslandscaping.com



DINING ROOM

With Walpole Outdoors, you can create amazing spaces for entertaining, dining, relaxing and enjoying time together. Choose from our inspiring selection of classical, contemporary, and historical designs, or let our designers and artisans customize unique elements that suit your property and express your style. Let us bring your ideal outdoors to life.

Walpole Outdoors™

Schedule your free design consultation today. **866.765.8839** | walpoleoutdoors.com

Live Outside Expectations.



Tri-State Stone®
& Building Supply Inc.

301-365-2100
carderock.com

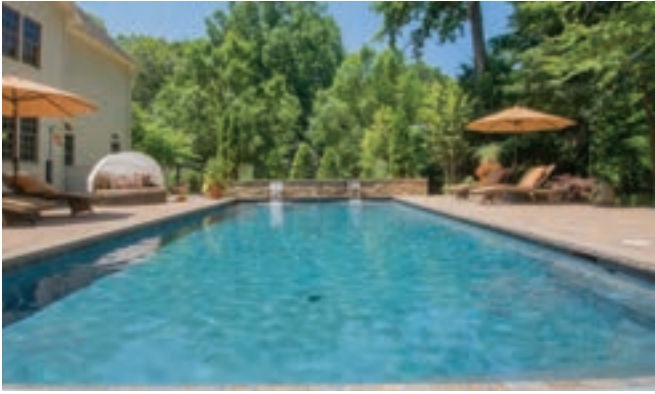


Carderock®



davidburroughs
PHOTOGRAPHY

www.davidburroughs.com



SCAPES INC.

An Award-Winning Design & Build Landscape Company
 Annapolis | 410-867-6909
www.scapesinc.net



Master Plans • Water Features, Pools & Spas • Patios & Decks • Fireplaces & Outdoor Kitchens • Lighting Systems



LOOK FOR
OUTDOOR LIVING IDEAS
 AT
HOMEANDESIGN.COM

DC • MD • VA
HOME&DESIGN
 THE MAGAZINE OF ARCHITECTURE AND FINE INTERIORS






Lila Fendrick Landscape Architects

fendrickdesign.com

McInturff Architects
 Lofgren Construction
 © Julia Heine



Text by SHARON JAFFE DAN | Photography by ALLEN RUSS

OUTDOOR *escapes*

Three glorious gardens make
al fresco living and entertaining a breeze



green scene

A clever plan transforms a useless slope into a chic outdoor party space





Previous pages and this spread: An accent wall of Western Maryland stone anchors the spa, which doubles as a fountain (top) when not in use. A new stairway (opposite) leads to the backyard lawn, pool and fire pit. An aqua PebbleSheen finish plays up the reflections of the trees on the pool. A waterfall edge (above), softened by masses of astilbe, animates the slope down to the stream.

After settling into their new McLean residence, a couple decided to address its steep, practically non-existent backyard. The issue: The terrain began its descent toward pristine woodland only a few feet from the home’s rear façade.

“There was no play space for their two young daughters,” recalls landscape architect Joseph Richardson, who was initially asked to build out a modest lawn. From there, he says, the owners’ plans mushroomed.

Richardson wound up overhauling the entire property, building up the backyard with massive retaining walls in a feat of engineering. The makeover forged a better connection between the front and back yards with a stairway swathed in Big Blue liriopse. It also created a lawn for the kids and unfurled an expansive terrace that houses a dramatic, infinity-edge pool and a freestanding spa/water feature.

Now that the project is complete, reflects Richardson, “the pool offers a spectacular view of the natural area.” The terrace blends seamlessly into the landscape. “Full-range flagstone paving shows variations in color and texture,” he continues, “and helps soften the space.” As do native waxmyrtle, Annabell hydrangea and manicured boxwood hedges.

Along the property line, a wall of Western Maryland stone buttresses the spa, fed by water flowing through brass scuppers. A fire pit by Hart Concrete Design tempts guests to linger year-round.

A staircase leads the owners past the pool’s waterfall edge and down the slope to a stream and a wooded trail—the perfect extension of their own natural idyll.

.....
Landscape Architecture: Joseph Richardson, PLA, ASLA, Joseph Richardson Landscape Architecture, Washington, DC. Landscape Contractor: Black Pearl Management, Leesburg, Virginia. Pool Contractor: Jose Pimenta Construction, Rockville, Maryland.

cutting edge

Inviting gardens embrace a renovated
1925 Arlington bungalow





When landscape architect Scott Brinitzer was tapped to reimagine the gardens surrounding a 1925 Arlington bungalow, he jumped at the opportunity. A major renovation was underway, spearheaded by Winn Design + Build.

Challenges were many on the long, quarter-acre site. Its corner location meant factoring two street views into the design. Brinitzer had to connect the house and a new freestanding garage in the backyard and screen the home from its neighbor to the south. "I was drawn to the potential to preserve the character of the house and create a casual, comfortable landscape that wasn't overly rigid," he says.

Throughout the garden, he defined lines and then blurred them, imparting soft, unfettered appeal. The front walk of limestone has toothed edges, as does a rear terrace that dissolves into a gravel path. "Every edge, with the exception of the seat wall, breaks and opens and doesn't wall you off," he explains.

Side gardens present their own allure. On the street side, instead of a heavy evergreen wall that would dwarf the house, a fluid screen of Miami crape myrtle provides privacy year-round. On the opposite side, a natural gravel path traverses randomly placed Virginia cedar, Steeplechase arborvitae and abundant perennials.

The completed landscape not only lures the homeowners outside, but also attracts an array of pollinators. "Bumblebees are everywhere," marvels Brinitzer. "That's part of the environmental piece that we loved bringing to the project."

Renovation: Winn Design + Build, Falls Church, Virginia. Landscape Architecture: Scott Brinitzer, PLA, ASLA, Scott Brinitzer Design Associates, Arlington, Virginia. Landscape Contractor: Dreamland Gardens Inc., Fairfax, Virginia. Masonry: JoPal Construction Inc., Rockville, Maryland. Lighting: Outdoor Illumination Inc., Bethesda, Maryland.





A cast-iron fire pit animates the flagstone terrace (previous pages and top), which is enveloped by Incrediball hydrangea, Japanese aucuba and a katsura tree. Brinitzer staggered the stonework here and on the front walk (above) flanked by zoysia and “gum drops” of dwarf mondo grass. Miami crape myrtle, iris and daylily screen the property from the street (opposite); a natural path planted with perennials (right) borders the south side.

private spot

A natural pool and its lush surroundings
celebrate the great outdoors





A couple thinking outside the box approached Miles Barnard about designing a pool and gardens in a six-acre meadow on their verdant, 34-acre property near Chestertown, Maryland. The landscape architect pitched the idea of a natural pool. Unlike conventional pools that rely on chlorine to sterilize the water, natural pools harness the relationship between beneficial bacteria and underwater plants to filter out nutrients and impurities.

Once his clients decided to take the plunge, Barnard set out to design their eco-friendly habitat. He conceived a free-form pool with two zones separated by an underwater wall; a shallow regeneration zone is situated on one side with a deeper swimming area on the other.

The plan also included a library and an apothecary/clinic used by one of the owners, a registered herbalist and nutritionist who grows more than 50 species of native medicinal plants on-site. Clad in reclaimed barn siding, the outbuildings lend a rustic touch—as does the cedar hot tub near the pool’s edge.

Barnard also created a lush landscape teeming with native vegetation and stone outcroppings. He partnered with contractor Ben Herr, who built the pool and hardscape and installed every plant, stone and boulder to mimic Mother Nature. “On a project like this,” notes Barnard, “I draw as much of it as I can, then have to trust someone like Ben to put these natural materials together in a way that’s going to look right.”

The owners are delighted with their pond-like pool and its pristine environment. Herr sums up its appeal best with a question: “Who wouldn’t want to jump into their own fresh mountain lake?” ■

Landscape Architecture: D. Miles Barnard, ASLA, RLA, South Fork Studio Landscape Architecture, Inc., Chestertown, Maryland. Landscape Contractor: Ben Herr, Anthony’s Flowers and Landscaping, Chestertown, Maryland.

Clockwise from opposite: Bathers cool off in the natural pool, where untreated fresh water is pumped between swimming and filtration zones separated by an underwater wall. The property also houses a library, an apothecary, a bocce court and a hot tub. Mammoth boulders—including a 12-foot-long stone diving platform—were sourced in New York. Native grasses fringe the pool while aquatic plants below the surface keep it clean. At twilight, a fire pit beckons.

joyful MIX

A custom Spring Valley home draws inspiration from the past while landing squarely in the present

Text by CATHERINE FUNKHOUSER
Interior Photography by ERIK KVALSVIK
Outdoor Photography by DAVID BURROUGHS



The home's stepped design meets setback requirements for a stream flowing below the backyard's stone retaining wall. Large groupings of multi-paned windows evoke a Tudor spirit.



In the entrance hall (pictured here), Skip Sroka rendered his modern stair-rail design in Tudoresque wrought iron. Wallpaper from Paul Montgomery Studio graces the foyer's walls and ceiling (opposite, bottom) while in the family room (opposite, top), decorative artist Paul Robson created a faux-linen finish on the walls.



Tucked just blocks off teeming thoroughfares, DC’s Spring Valley enclave boasts a rolling landscape and lush greenery that belie its urban address. One storybook setting there entranced a pair of retired attorneys looking to return to the district after raising their children in Bethesda. “We saw the yard and said, ‘This is it,’” recounts the husband. “For being in the middle of the city, it’s very special.”

A 1930s Tudor-style abode occupied the parcel. Though charming, it lacked the entertaining space and modern amenities—a kitchen with elbow room being one—that the couple desired. Initially gearing up for a renovation, they enlisted architect Chris Snowber and builder Richard Zantzinger. The team explored the makeover option at length but ultimately recommended starting afresh.

Snowber planned the new home around a scenic, albeit somewhat restricting, stream running through the rear yard. As he reveals, the feature “was a constraint but totally drove and enriched the design.”

Architecture: **Christopher R. Snowber**, AIA, principal; **Michael P. Rouse**, AIA, NCARB, project architect, Hamilton Snowber Architects, Washington, DC. Interior Design: **Skip Sroka**, ASID, NCIDQ, ICAA, principal, Sroka Design, Washington, DC. Builder: **Richard Zantzinger**, Zantzinger, Inc., Washington, DC. Landscape Design: **Kevin Campion**, ASLA, principal; **Lindsey Tabor**, project manager, Campion Hruby Landscape Architects, Annapolis, Maryland.





In the living room, a Chesneys fireplace mantel with an arched opening nods to Tudor style. The space's architectural details offer what Sroka describes as a "slight infusion of Deco." He sourced the eclectic artwork through a Paris dealer. French doors open to an outdoor entertaining area on a side terrace.

The library millwork in Benjamin Moore's glossy Mallard Green sets a glamorous stage. Sroka designed the geometric-patterned rug and gold-accented coffee table. New linen-blend upholstery from Jim Thompson revived the owners' existing chairs.

To maximize the footprint, the back of the house progressively steps out to follow the path of the water. "Our plan grew out this way because we wanted to get as close to the stream as possible," the architect adds. "The stream diverts towards the rear of the property; the plan does that as well. Much of the design was about orienting the house to its remarkable site and connecting it visually and physically."

With stretches of glass opening to backyard views, the living room sits at the main level's narrowest end, followed by the family room and eat-in kitchen. The owners' suite enjoys a second-floor vantage point above the kitchen in the widest section. Lower-level spaces spill directly outdoors.

Following its predecessor's lead, the 6,500-square-foot dwelling expresses a Tudoresque quality. The exterior's mix of stucco, stone, timbers and brick speaks to the Old World aesthetic. "It felt like a natural fit to continue in the Tudor style since it had a connection on the site," states Snowber. "We weren't looking to make a Tudor house, which can sometimes feel sort of dark and heavy. The challenge was finding the balance between capturing the spirit and making the house feel open and bright."

Interior designer Skip Sroka came on board early, bringing his interpretative lens to everything from architectural details to decorative touches. "We took a few design liberties," he admits freely. "We wanted to create a 'new old' house, with the wonderful quality and bones of an older home but one that has been updated to be part of this century."

Wrapped in hand-painted wallcovering, the elegant foyer serves as a harbinger of what's to come. "The Chinoiserie wallpaper, with its glowing gold background, sets the tone," Sroka explains. "This home is a joyful balance of past and present with an easy dollop of glam."

Fresh approaches throughout energize the residence's traditional bones. The designer dialed up the drama in the library, coating its millwork in a deep-green lacquer. Across the hall, celadon-hued faux finishes enliven the dining room's paneled ceiling and walls.

Sroka's attention to detail is evident at every turn. The library's teal hue reappears on the sofa trim and chair upholstery in the adjacent living room, establishing visual flow. The kitchen cabinets sport back-painted glass doors, while the pantry near the breakfast area showcases antiqued-mirror doors. The velvet-upholstered headboard on the owners' four-poster bed extends to the sloped ceiling.

The furnishings constitute a mix of new and old finds, repurposed pieces from the owners' collection and bespoke creations of Sroka's design. A livable yet elevated look prevails.

"It's a beautiful, happy house that has some sophistication, but it's not off-putting," asserts Sroka. "Balancing what you need to have for comfort with what you want to have for delight is very important in a home."







In the dining room (these pages), Sroka mixed two chair styles around an existing table to create a “homey feel.” He repeated the host chairs’ Scalamandré ikat print on the window panels. Abstract paintings by the late American artist Morris Schulman crown a Modern History console.



“ This home is a joyful balance of past and present with an easy dollop of glam. ”

—SKIP SROKA





Sroka designed and Zantzing crafted custom cabinetry in the kitchen (opposite) featuring countertops and an integrated backsplash in quartzite. The breakfast area (above) opens to a deck overlooking the verdant backyard. A new circular staircase, stone paths and a metal-and-ipe bridge (below) enhance garden access.





Before covid struck, the empty-nesters threw their daughter’s wedding in the garden and held a fundraiser for the DC-based Latin American Youth Center. “We built the house because we like to entertain and hopefully we can again someday soon,” says the wife. “This is a great house for hosting events. There’s lots of space for people to roam around.”

Indeed, guests can stroll outdoors, where four gathering areas await. Champion Hruby Landscape Architects refreshed and augmented the surrounding scenery. For improved access, the team added stepping-stone paths and a bridge to a respectfully restored terrace across the stream. “There were relics of a past garden,” recalls Kevin Campion. “It was clearly meant to be a garden of exploration. [The owners] wanted to follow through with that idea and to be able to move through their garden in a graceful way.”

The couple credits the project’s success—inside and out—to a close collaboration. “The team worked together so beautifully,” marvels the wife.

Her husband concurs: “The ensemble was just great.” ■

SOURCES OF NOTE

Home Automation: abenetworks.com. Windows: lepagemillwork.com through twperry.com. Family Room Sofa Fabric, Chair & Ottoman: kravet.com. Living Room Club Chairs: centuryfurniture.com. Dining Room Side Chair Fabric: hinescompany.com. For a complete list of resources, see homeanddesign.com.





To match the scale of the vaulted ceiling in the owners' bedroom (these pages), Sroka specified a pencil-post bed from Hickory Chair. Cut-linen Lee Jofa velvet covers the bespoke headboard while luxurious Sferra linens dress the bed. Window panels, crafted in an English floral from Clarke & Clarke, frame backyard views.



Davenport designed his dream home on a waterfront lot facing Virginia's Lake Anna. The 4,700-square-foot dwelling features a rear terrace paved in white quartzite tile. PHOTO: DAN CUNNINGHAM

SERENE DREAM

Architect Jeffrey Davenport creates his own laid-back, modernist family retreat overlooking Virginia's Lake Anna

Text by KELLY VELOCCI

Photography by JENNIFER HUGHES







A collection of photographs, family artwork and mementoes sits atop a Snaidero credenza (opposite). The great room (above) is furnished with a Safavieh rug, Herman Miller sofa and Eames lounge chairs and ottomans. The gas fireplace is covered in the same Sto glass cladding as the exterior.

Throughout his decades-long career as a commercial architect, most recently as a principal at Perkins&Will, Jeffrey Davenport has master-minded structures around the world that meet his clients' every last wish. Yet he never had the opportunity to do the same for himself until a fateful day in 2015 when his Northern Virginia neighbors brought him to see a two-and-a-half-acre waterfront lot on Virginia's Lake Anna. It was hardly love at first sight for Davenport and his wife, who needed time to mull over the idea. "Being an architect, my goal was always to design the house of my dreams," he explains. "But I wasn't sure if this property was right or even if it was the right time." After a few months of consideration, however, they put in an offer. "I figured now is as good a time as any," Davenport says.

Given the opportunity to conceive a getaway from the ground up, the architect envisioned a home unlike the couple's primary residence, a traditional center-hall Colonial in Northern Virginia with rooms that go unused much of the year. For this new abode, he leaned into his penchant for modernism, devising a striking,

single-story, 4,700-square-foot dwelling with large, open spaces for gathering. He envisioned room for frequent visits from his grown children and grandchildren, but a feeling of coziness when it's just the couple. "I wanted someplace where the family could get away and reconnect," he says. "This house and site allow for that."

To realize his vision, Davenport organized the six-bedroom, six-and-a-half-bath home along what he describes as a spine, which maximizes every square inch of the lot's narrow buildable area. The great room is located at one end, while the owners' suite is situated at the opposite corner. The garage and media room extend off the spine from the south side of the home. The entire structure is covered in a white- and gray-colored glass cladding system by Sto that mirrors surrounding trees and nearly 270-degree water views. "The reflective properties of the glass take on a different quality and appearance throughout the day and during each season," Davenport notes.

Architecture & Interior Design: **Jeffrey Davenport**, Perkins&Will, Washington, DC.
 Kitchen & Bath Design: **Shawna Dillon**, ASID, NCIDQ, Snaidero DC Metro, Alexandria, Virginia. Builder: **Ken Stanley**, Stanley Custom Homes, Orange, Virginia.



The open kitchen (these pages) features white-lacquer and walnut cabinetry from Snaidero; the hood, range and ovens are Miele. Bertioia bar stools line a Caesarstone-topped island and Eames chairs surround an MDF Italia dining table. Carlisle Wide Plank Floors' engineered white oak runs through much of the interior.



“ Being an architect,
my goal was always
to design the house
of my dreams. ”

—JEFFREY DAVENPORT



Clockwise from opposite: The home's exterior is sheathed in a colored glass cladding system by Sto. The powder room features Daltile's Unity porcelain tile in Nero and a Grohe faucet. The owners' bath is outfitted with statuary marble wall tile from Best Tile and Grohe plumbing fixtures. An LC7 swivel chair sits before a Snaidero vanity cabinet.





The site's rural Louisa County location proved challenging for Davenport in the hunt for a builder to carry out his vision, which included complex configurations like large cantilevers specially positioned to block direct sunlight in the summer while still helping to heat the interior in cooler seasons. "Finding a contractor in the area who was willing to take on the challenge of a home like this wasn't easy," explains Davenport, who eventually enlisted Ken Stanley of Stanley Custom Homes in Orange, Virginia. "Once he understood how particular I was, Ken actually exceeded my expectations."

Taking full advantage of the home's natural surroundings was top of mind for the architect, who opted for large expanses of floor-to-ceiling windows to help blur the lines between interior and exterior. Even the entry door is constructed from a nine-foot-tall piece of glass. "The idea was that you come up to the house and get a visual inside and then out to the lake," says Davenport. He also considered the view for frequent passersby, devising a feature wall with sculptural cutouts separating the foyer and main living area, which is illuminated at night and visible from the water.

A pared-down interior palette ensures that the spectacular vistas remain the star of the show. In the open kitchen, for example, minimalist white-lacquer cabinetry from Snaidero is a seamless match

to the room's white walls, while walnut accents add a striking contrast. "Everything we did was to blend in with the architecture, instead of designing a kitchen that says 'notice me,'" recounts Shawna Dillon of Snaidero DC Metro, who worked closely with Davenport to realize the space. "Our design philosophy is always about integrating into someone's home."

In keeping with his modern vision, Davenport selected classic mid-century furnishings like Eames dining and lounge chairs, Bertioia bar stools and Saarinen Womb chairs. But never does the less-is-more approach restrict his family from the relaxed enjoyment of the abode. Case in point: A sleek MDF Italia dining table clad in French oak veneer is a frequent gathering spot for games.

And even the 100-foot-long central corridor provides ample fun. "My grandsons love to have me chase them down that hallway," says Davenport with a laugh. "It's a wonderful home for a large family—and we're not a quiet group." ■

SOURCES OF NOTE

Owners' Bath Wall Tile: besttile.com. Wood Flooring: wideplankflooring.com. Windows: fleetwoodusa.com. Ovens, Range & Hood: mieleusa.com. Home Automation: lutron.com through arcanetech.com. Living Room Sofa & Eames Chairs: hermanmiller.com. For a complete list of resources, see homeanddesign.com.

In the living room (pictured here), velvet-upholstered, kidney-shaped chaises were designed by Betsy Delisi and made by Stewart Furniture. The office (opposite) centers on a custom desk by Black Wolf Design.



SUBTLE MOTIF



A design team infuses a traditional McLean home with understated sophistication and a thoroughly modern sensibility

Text by LINDA HALES

Photography by STACY ZARIN GOLDBERG

The Berman Rosetti dining room table is paired with Stewart chairs upholstered in Romo and Arc-Com textiles. An oversized Corbett chandelier incorporates swirls of brass suggesting the fluidity of harmonies, a reference to the owners' love of music.





Half a lifetime ago, Ajaipal “Jay” Virdy anticipated the serene home that he and his wife, Shalu, now enjoy. Back then, Virdy’s fledgling tech company occupied space next to a builder whose work he admired. Virdy promised himself that one day, he would ask that company to create an awesome house for him and his family.

Two decades later, the dream came true. With two grown children and an enviable career complete, Virdy and Shalu were moving from Leesburg to a classic, two-story abode in McLean. The property was endowed with an ideal setting and recently added guest quarters perfect for Virdy’s aging mother. But the 9,422-square-foot house, built in 2001, came with awkward and dated interiors.

Virdy called on his former neighbor, design-build company BOWA, which in turn enlisted architect Sarah Armstrong of Studio 360 and Betsy Delisi of Lotus Interior Design. The team quickly sized up the home’s quirks: The owners’ suite was an unwieldy labyrinth, the kitchen lacked warmth—and something about the entry hall didn’t work. What followed was a two-year, top-to-bottom reimagining that converted the home’s nine bedrooms to five with three sitting rooms, and revamped the rest of the existing spaces.

“It’s heaven,” says Shalu Virdy. “It’s our forever house.”

Armstrong imparted drama and functionality without expanding the footprint. “We started with the architecture, creating a really great space,” she notes. Walls were moved, ceilings raised, windows expanded, paneling gutted, the attic reclaimed, the owners’ suite redesigned, the kitchen enhanced, and the lower level personalized with a golf simulator and sufficient room for musical equipment to sustain multi-generational family gatherings. (Jay plays guitar while Shalu sings.)

First came the entry—a low, narrow space where any sense of arrival had been cut short by a blank wall straight ahead. That barrier hid a sun-filled family room at the back of the house. By raising the ceiling, widening the space and replacing the wall with black-framed, sliding-glass doors, Armstrong established a fresh dynamic and compelling vista from the front door. “My goal was to have a straight shot through to the garden view,” she explains.

Renovation Architecture: **Sarah Armstrong**, AIA, Studio 360, Clifton, Virginia.

Interior Design: **Betsy Delisi**, Lotus Interior Design, LLC, Ashburn, Virginia.

Kitchen & Bath Design: **Eric Lieberknecht**, Eric Lieberknecht Design, Washington, DC.

Contractor: BOWA, McLean, Virginia.





Light-stained upper cabinets and expanses of glazed white subway tile lend airiness to the kitchen, which is warmed by a wood-paneled ceiling and clean-lined custom cabinetry in rift-sawn white oak. The hand-finished, stainless-steel range hood was designed by architect Sarah Armstrong. A waterfall-edge island nearly five feet wide and 12 feet long is topped with Silestone.

Armstrong reconfigured the entry hall, replacing an intrusive wall with black-framed glass doors that open views to the family room and garden beyond. The family room features a sectional and coffee table from AmericanEye, grouped atop a custom Tamarian rug from Galleria Carpets.





“My goal was to have a straight shot through to the garden view.”

—SARAH ARMSTRONG

Next, partial walls and classically styled columns between the family and breakfast rooms were removed, effectively adding 11 feet of living space. The outside wall of the breakfast area was replaced with matching black-framed sliders opening to the patio. The expanse of glass marries the interior to a 1.16-acre landscape, where a pool and putting green blend in amid flowering trees. Says designer Delisi, “The house didn’t present as interesting until Sarah got hold of it.”

To establish a uniform envelope, Delisi had the walls and ceilings throughout painted Benjamin Moore’s China White. Furnishings were added in soft blues and greige. The interior scheme honors Armstrong’s black-framed doors by treating the existing window frames to a thin outline of gray paint; draperies soften windows only in the dining room and owners’ bedroom. With 10-foot ceilings, Delisi chose dramatic lighting for size and presence.

The move to a new house enabled the owners to shift to a more contemporary style. That choice led to the decommissioning of a collection of Indian carpets and richly carved wood furniture. “We sold almost everything,” declares Shalu Virdy, adding, “I have no regrets.”

However, the couple has not abandoned natural wood or fine craftsmanship. The breakfast table showcases a live-edge slab of Claro walnut 15 feet long, which Delisi sourced in Oregon and had finished in Wisconsin. The remodeled kitchen, a collaboration with kitchen designer Eric Lieberknecht, boasts a paneled ceiling, striaed-veneer cabinet fronts and a hand-rubbed, stainless-steel range hood. A white oak display cabinet provides a focal point from the stair hall. “Wood is back,” Delisi avers.

Upstairs, Armstrong reconfigured the owners’ suite. The bedroom awaits a Maya Romanoff wall covering, but the master bath is ready for its star turn. The couple asked to replace his-and-her spaces with a single bath, centered on an extravagant porcelain-and-glass shower and floating tub. At Jay Virdy’s suggestion, a spiral stair was added in the owners’ closet; it accesses a storage loft, carved from unfinished space in the attic, where a glass-fronted cabinet showcases Shalu Virdy’s colorful collection of Indian saris.

Armstrong eliminated classical-style columns separating the family room and the breakfast area, where Visual Comfort brass fixtures illuminate a custom walnut-slab table with a brass base. Flooring was replaced with seven-and-a-half-inch-wide planks of prefinished white oak.









A roomy, glass-enclosed shower clad in marble-look porcelain is the showpiece of the owners' bath (left); a BainUltra soaking tub sits amid large-format porcelain slabs. Eric Lieberknecht designed the vanity. The airy owners' closet (below) was designed by Tailored Living; a spiral stair leads up to a loft space carved out from the attic for additional storage.



Today, sunlight streams through the bare, crisply painted windows in the living room, where plush seating designed by Betsy Delisi and fabricated by Stewart Furniture accompanies the family's baby grand piano, one of the few keepsakes that transitioned to McLean. Throughout the house, Delisi commissioned wall panels, carpets and lighting with subtle musical motifs as well as a keyboard painting above the mantel to reflect her clients' love of music. She also incorporated contemporary patterning suggestive of their Indian heritage; in the foyer, for instance, a mosaic niche spotlights a precious sitar.

The lower level came last—but not for lack of importance. A nifty wall of acoustical white oak slats forms the backdrop for a wet bar with a backlit onyx countertop. A hidden door in the slats reveals a movie theater. Essential music equipment occupies half a wall. Nearby, a door leads to a golf simulator enlivened with an image of the course at Pebble Beach. A delighted Jay Viridy says, "I live in the golf room."

On cue, Shalu responds, "And I have the rest of the house." ■

SOURCES OF NOTE

Kitchen Backsplash & Owners' Bath Tile: marblesystems.com. Kitchen & Owners' Bath Faucets: fergusonshowrooms.com. Custom Kitchen Hood: akmetalfab.com. Closet & Living and Dining Room Chandeliers: dominionlighting.com. Home Automation: ehvironments.com. For a complete list of resources, see homeanddesign.com.



To convey the look of a beach house in The Hamptons, architect Christopher Pattey clad the home's exterior (above) in NuCedar engineered shingles designed to withstand the elements. A Ferrell Mittman sectional in the great room (opposite) takes in the view while a slender Arteriors chandelier draws the eye.

BAY BEAUTY

A design team channels a coastal vibe
in a clean-lined, traditional abode overlooking
Maryland's Eastern Bay

Text by JULIE SANDERS
Photography by GEOFFREY HODGDON





Bucolic farmland and a panoramic stretch of waterfront beckoned a couple looking for a vacation home on the Chesapeake. The 15-acre parcel overlooking Eastern Bay on Kent Island was already home to an abandoned, circa-1980s abode set amid cornfields. The couple saw an opportunity in the rundown house, which was in foreclosure. “We are water people and had looked forever for the right property,” the wife recalls. “This one checked off every box.”

The husband, who owns a mechanical contracting company, and wife, a stay-at-home mom, envisioned a sprawling weekend getaway that would become their full-time residence once their three teenage daughters go to college. They tasked architect Christopher Pattey, who had designed their beach cottage in Bethany, with reimagining—and greatly enlarging—the 3,000-square-foot structure. Early in the process, Pattey brought in designer Erin Paige Pitts to orchestrate interiors that would harmonize with the architecture, and builder John Coursey to implement their vision.

“They specified a coastal-traditional vernacular, reminiscent of grand summer homes in The Hamptons, with cedar shingles and lots of indoor-outdoor flow,” Pattey says. “It’s really an estate. We increased the square footage to 8,100—not counting pavilions, verandas and a cabana that add several thousand more.”

Renovation Architecture: **Christopher L. Pattey**, Associate AIA, Becker Morgan Group, Salisbury, Maryland. Interior Design: **Erin Paige Pitts**, Erin Paige Pitts Interiors, Annapolis, Maryland. Renovation Contractor: John W. Coursey and Son, LLC, Centreville, Maryland. Landscape Installation: Terra Nova Design, Crofton, Maryland.





A bench in the entry hall (opposite) pairs with art by Suzanne Yurdin. On the second level, a spiral stair leads up to the observation tower. In the great room (pictured here), an existing brick fireplace wall was painted white and flanked by built-ins. McGuire chairs and a sectional surround a coffee table by Mitchell Yanosky.





Seen from the back (above), the home's sprawling, linear design is punctuated by gables, hipped roofs and a central tower. A slate-floored pavilion with retractable screen walls (opposite) hosts alfresco meals on a concrete-topped table with woven chairs. Architect Chris Pattey and designer Erin Pitts (left) pose beneath the front entry portico.



Constrained by critical-area rules, Pattey retained the existing foundation, which forms the home's central volume. This section encompasses a foyer and stair hall; an open-plan dining room, kitchen and two-story great room; a library; and a sunroom. Support spaces include a back hall, butler's pantry, mudroom areas and laundry. The second floor was overhauled to accommodate en-suite bedrooms for the three kids, while a new 2,500-square-foot owners' wing on the main floor features a separate circular, columned entry "to establish a sense of arrival," Pattey says. Past a sitting room dubbed the "owners' retreat," a wide corridor leads to the bedroom, bath and closets.

On the opposite side of the house, an existing two-car garage now boasts a spacious second-floor guest suite complete with a chic kitchenette. A colonnade connects this structure to a new three-car garage, above which an unfinished rec room awaits the next phase of construction.

The owners' program celebrated both farmland and waterfront, so Pattey conceived a linear design in which every room enjoys one of these vistas. "I didn't want the linearity to be monotonous, so I created an octagonal tower above the main entry," he notes. "It's a vertical element that draws the eye. And the owners get the bonus of an observatory with panoramic views," accessible from a spiral stair on the second floor. Pavilions with hipped roofs, cupolas, gables and porthole windows embellish the exterior. Says Pattey, "There's not a specific rhyme or reason for everything; it's about



the proportions and what is pleasing to the eye.” Inside, he created a sense of coziness by delineating spaces in the open-plan central volume and owners’ wing with columns and ceiling-height changes.

When conceiving the interiors, Pitts turned to the home’s estuary environment for inspiration. “They have the most magnificent waterfront I’ve seen,” she observes. “There’s an enormous front yard that’s planted with corn in the summer and a creek with wetland grasses. I tried to mix the colors of the bay and sky with the textures of the property.” A crisp-white kitchen with backsplash tiles in blues ranging from subtle to bold provided a jumping-off point for the home’s overall palette of creams and whites punctuated by blue accents. In the butler’s pantry, vibrant blue cabinetry pairs with a mirrored-tile backsplash for a touch of glam.

Pitts furnished the house from scratch, honing in on light-stained woods, woven pieces and upholstery that convey both comfort and sophistication. She enhanced the sense of intimacy through warmth of materials and furniture groupings, selecting low-slung silhouettes that allow the views to take center stage. Her challenges included designing the home’s seven bathrooms in a range of styles and materials; the marble-clad, hexagonal owners’ bath situated at the end of a wide corridor is a standout.

To meet the clients’ desire for easy indoor-outdoor living, Pattey created an abundance of al fresco spaces. A water-facing veranda



“ I tried to mix the colors of the bay and sky with the textures of the property. ”

—ERIN PAIGE PITTS



On the open-plan main floor, a formal dining area (above) features a Century table and Hooker chairs. Blue accents abound, from the Urban Electric chandelier to the barn door, embellished by Phillip Jeffries wallcovering, that encloses the butler's pantry (opposite, bottom). In the kitchen (opposite, top), casual meals take place around a Tritter Feefer table with a built-in window seat offering prime views.





The crisp-white kitchen (opposite) is punctuated by bright blue Walker Zanger backsplash tile and warm walnut tones on the island, where family members gather on stools from Serena & Lily. Urban Electric pendants illuminate the dining and food-prep islands. Delineated by slate flooring, the adjacent sunroom (above) offers another mealtime option, with a custom banquette, Tritter Feefer table and Sika Design chairs.

stretches the length of the main volume, spilling out to a patio with a fire pit. A screened pavilion and cabana—complete with powder room and outdoor shower—flank a pergola-covered walkway to another pavilion. The existing swimming pool has been refurbished, while an outdoor kitchen, dining area and owners’ wing patio give the family plenty of outdoor options. A landscape plan by Terra Nova Design softens the extensive hardscape.

The finished house boasts a seamless connection between

architecture and interior design, thanks to a design team that was sympathetic from the start. “When you team up early, there’s great synergy,” comments Pattey. Both he and Pitts contend that the trust the clients vested in the team enhanced the results.

The owners are thrilled with their newly completed abode, where they unexpectedly sheltered full-time for two months during the pandemic. “The process was long, about three years from design to the end,” says the wife. “But we made it exactly the way we want it.” ■

SOURCES OF NOTE

Walnut Countertop & Wood Refrigerator Panel: warrenwoodworks.com. Kitchen Counter Stools: serenaandlily.com. Dining Table: centuryfurniture.com. Great Room Drapery Fabric: fschumacher.com. Dining Room Drapery Fabric: osborneandlittle.com. For a complete list of resources, see homeanddesign.com.



A wide, airy corridor (above) runs like a spine through the owners' wing, culminating in the elegant, marble-clad owners' bath; a Victoria + Albert tub stands front and center. A custom rug by Erin Paige Pitts grounds the serene bedroom (right and far right), which features an inlaid night table and an upholstered bed from Bernhardt.





the beauty of **FURNITURE PLANS**



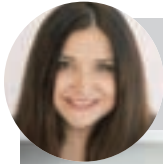
Laura Fox, Laura Fox Interior Design, LLC
laurafoxinteriordesign.com



Bonnie Ammon, Bonnie Ammon Interiors
bonnieammoninteriors.com, 703-778-5755



PHOTO: GEOFFREY HODGDON



Laura Hildebrandt, Interiors by LH, LLC
interiorsbylh.com, 571-334-6476



PHOTO: ROBERT RADIFERA



Jamie Merida, Jamie Merida Interiors
jamiemerida.com, 410-819-8666



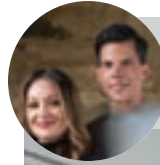


Barbara Hawthorn, Barbara Hawthorn Interiors

BarbaraHawthornInteriors.com, 703-241-5588

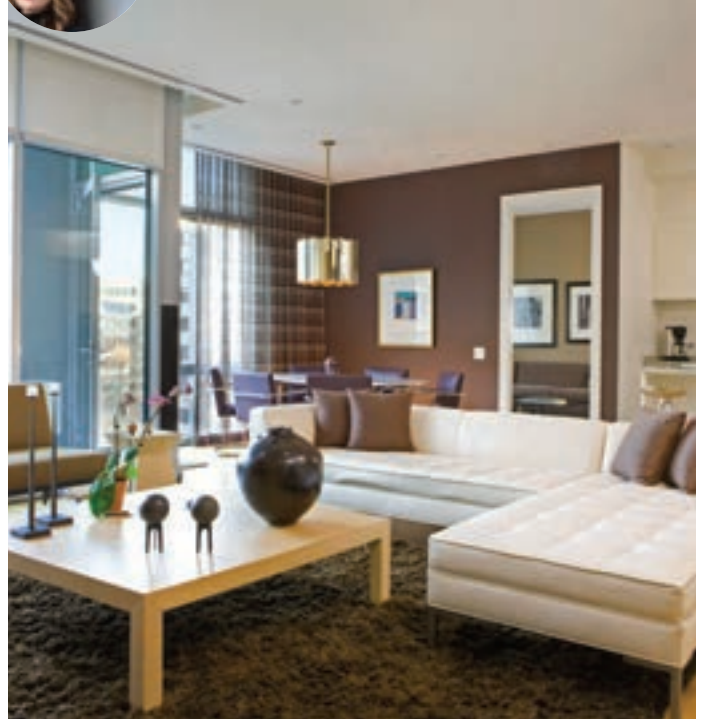


PHOTO: KENNETH M. WYNER PHOTOGRAPHY



Sarita Simpson and Jason Claire, Interior Matter

interiormatter.com, 202-900-3818



Melanie Whittington, Whittington Design Studio

whittingtondesignstudio.com, 703-533-3705



Cathy Purple Cherry, Purple Cherry Architects

purplecherry.com, 410-990-1700

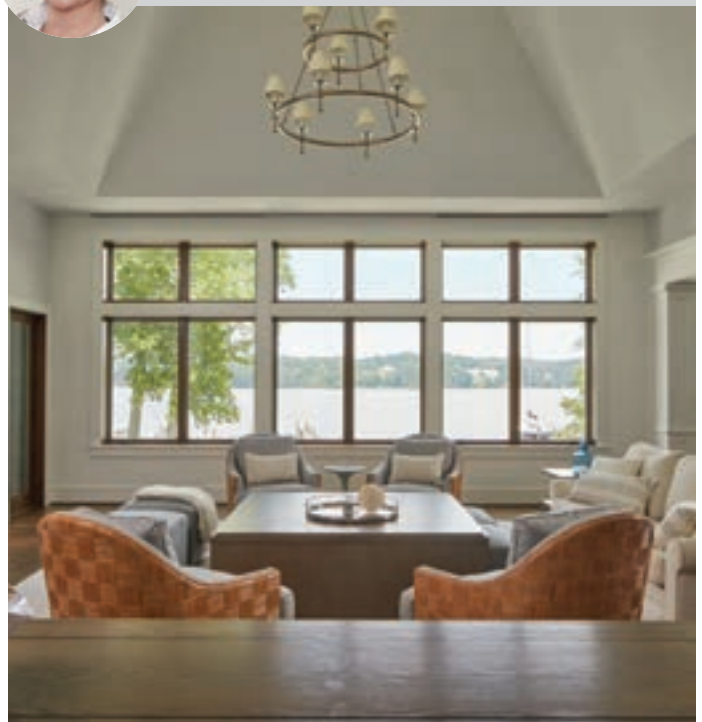


PHOTO: DAVID BURROUGHS



Bob Nardi, Photography, LLC

2020 HOME&DESIGN Designer's Choice Award for Custom Closets



20% Off
Plus Free Installation

Conditions apply. Call or ask your Designer for details.

SPECIAL FINANCING
for 12 months!

With approved credit. Call or ask your Designer for details.

Call today for a free in-home design consultation and estimate

703-330-8382 | 301-281-4804

www.closetsbydesign.com

HDM

Licensed & Insured

build + remodel

smart makeover • industry awards • idea file • cutting edge



Flanked by built-ins, the windows of a stylish home office capture views of the bucolic Waterford, Virginia, landscape. The project by KohlMark Group Architects + Builders won a 2021 Contractor of the Year (COTY) award, as well as *Home & Design's* Award of Excellence. See the list of COTY winners on page 164; three winning projects are spotlighted beginning on page 182.



PERFECT SETTING

KohlMark Group Architects + Builders revamps a traditional Loudoun County home with modern farmhouse flair and a strong indoor-outdoor connection

Text by SUE KIRCHHOFF | Photography by GREG HADLEY



Board-and-batten siding and black-framed windows convey a modern-farmhouse look (above), while multiple outdoor spaces maximize enjoyment of the home's picturesque environs. Seen from the rear (left), the home's added indoor and outdoor spaces clearly embrace the surrounding panorama.

An award-winning renovation transformed a staid, builder-grade home in the rolling hills of Waterford, Virginia, into a clean, modern farmhouse that takes full advantage of the stunning scenery from an inviting new suite of outdoor entertainment spaces.

The owners, formerly in the tech industry, purchased the 7,200-square-foot, 1990s Colonial-style abode for its five-acre site, which boasts vistas of both adjacent vineyards and distant mountain peaks. But after 15 years in residence, they were eager to update the exterior, expand the interior spaces to maximize the views and open the home to the surrounding landscape.

“The house was designed so that the view from the kitchen was blocked by a mudroom in back,” recounts architect Thomas Flach. “The basement wasn’t finished, and the house didn’t connect to the yard.” Flach designed the remodel with Mark Kohler, founder of KohlMark Group, which encompasses both an architecture firm and a building company; they collaborated with colleague Wade Greene on the construction process.

The architects reinvigorated the dated house with a two-story rear addition that extends existing spaces on the first and second floors, optimizes the views and creates multiple points of access to new outdoor living areas. The offending mudroom was relocated to the addition and enlarged to accommodate a special shower for the owners’ beloved German shepherds. The dining area was expanded with a window-lined bay; glass doors nearby open to a large deck complete with a built-in grill. In the adjoining great room, the architects traded out traditional, small-paned windows that partially obscured mountain views for oversized panes with slim, black frames that

Renovation Architecture: **Thomas Flach**, AIA, KohlMark Flach Architects; **Mark A. Kohler**, AIA; KohlMark Group Architects + Builders, Burke, Virginia. Renovation Contractor: **Wade Greene**, KohlMark Builders, Burke, Virginia. Kitchen Design: **Rich Perkins**, NVS Kitchen & Bath, Manassas, Virginia. Landscape Architect: **James R. Peter**, RLA, ASLA, Colao & Peter Luxury Outdoor Living, Sterling, Virginia.



better capture the scenery. The kitchen and owners' bath have been updated and the basement finished in style.

On the second floor, the owners' suite was revamped and enlarged; in addition to a luxe walk-in closet and bath, it now boasts an airy private sunroom with three walls of windows embracing panoramic views. "The sunroom is a spectacular space to watch the sun set and have a glass of wine," Flach comments. "It's an oasis that was one of the best surprises of the project."

The finished lower level beckons, with a home office, billiards area, media room, sauna and wet bar. Glass doors open to a covered patio where a two-sided fireplace also serves the lower-level interior spaces.

To achieve the farmhouse look the owners envisioned, the design team re clad the house in wide board-and-batten siding, replaced traditional windows and shutters with black-framed Windsor windows and broadened the stone foundation walls. In lieu of traditional garage doors, black-painted barn doors add charm to



BEFORE PHOTOS



Clockwise from opposite, top: The addition created a bay in the breakfast room, which is situated off the kitchen. In the adjoining great room, a neutral palette and understated furniture in solid colors ensure the view takes center stage. The kitchen received a facelift that included a new island, black-painted refrigerator and freezer panels, lighting and counter stools.



DRAWING BOARD

What are factors to consider when planning a home remodel?

Tom Flach: Needs change as families enter different stages of life.

A playroom for toddlers will quickly become obsolete if a long-term plan is not incorporated. Aging in place and accommodating mobility issues should also be considered.

How have renovations changed during the pandemic?

Tom Flach: With parents and their children working and going to school in their homes, the open-concept floor plan has presented a challenge. A lot of projects these days involve creative solutions to provide flexible private spaces.

Mark Kohler: Many subcontractors do not want to work inside with other subs, which has slowed the process.

And we're finding that inflation is significantly raising job costs.

What unknown issues often arise during a renovation?

Wade Greene: Wood rot and termite damage are probably the most common issues, along with lack of insulation or insulation that was poorly installed. Improving energy efficiency is a challenge and is not always cost-effective.



On the second floor, the owners' bedroom (above) connects to a new window-lined sunroom (above, left) that serves as a private retreat for watching the sunset—German shepherds in tow. The bedroom suite's walk-in closet (left) was upgraded with custom shelving and a luxe look.

the side façade. A small front portico was replaced with a wrap-around porch protected by a standing-seam metal roof that creates space to welcome guests.

While the open site provides the home's spectacular prospect, it also exposes it to harsh wind and weather, which had taken a toll over the years. As part of the reconfiguration, the great room walls were reinforced with steel and insulation and mechanical systems were upgraded. The renovation eventually touched every room in the house.

The farmhouse feel carries through the interior with the use of wide-plank white oak flooring, dark and rustic wood

accents and natural materials such as river stone in the bathrooms. NVS Kitchen & Bath's Rich Perkins rejuvenated the existing kitchen with black accents in cabinetry, lighting and a statement-making range that play off the black architectural windows.

The team worked closely with James R. Peter of Colao & Peter Luxury Outdoor Living, who designed an award-winning landscape with terraced stone walkways leading to an elegant pool, spa and pergola. "The client was changing a very traditional house into a modern farmhouse," notes Peter, who composed the outdoor elements to complement the renovation's



Pure is Timeless

SieMatic

SIEMATIC PURE STYLE COLLECTION

7550 WISCONSIN AVE. SUITE 120 BETHESDA, MD | 301-657-3800 | konstsiematic.com

Home&Design 2021 Top Kitchen Firm



clean lines. “We wanted to reflect the design change in the landscape—to stay true to ‘less is more’ by matching materials and keeping material choices simple.”

The landscape plan provided the owners with a private getaway among the vineyards. The first-floor deck and patio lead out to thick travertine walkways and steps down to the spa, pool and pergola. The pool area is faced with travertine, while the same Western Maryland stone that clads the home’s foundation also forms the retaining walls. Dark-granite accents pick up the dark hue on the window frames.

The outdoor entertainment areas were sited on an axis with the main back gable of the house. “We wanted to create unique spaces that the family can use at different times of the year,” Peter explains. The spa was set close in for easy access, with the pool sited at a lower elevation so as not to detract from the view when not in use.

The extensive renovation was completed just months before the pandemic shut down most daily activities, forcing people to stay close to home. The owners “couldn’t have planned it more perfectly, not knowing what was coming,” Mark Kohler observes. “It’s the perfect retreat. They have it all in one spot.” ■



The finished lower level opens to a covered porch (top) bordered by stone foundation walls, one of which frames an indoor-outdoor fireplace. Rustic wood accents and built-in storage embellish the interior spaces, which include areas for billiards (above) and playing games or watching TV (left).



ARCHITECTURAL STYLE MADE EASY

Andersen® A-Series windows and doors are based on the style of home you want. Whether it's a stately Queen Anne, a bold Modernist design or anything in between, you can now create it with the best-performing, most energy-efficient products Andersen has ever offered. Don't just imagine your dream home, build it with Andersen.



LOVE THE LIFE YOU SEE.™

Learn more at [andersenwindows.com](https://www.andersenwindows.com)

*Andersen™ and all other marks where denoted are trademarks of Andersen Corporation.
©2020 Andersen Corporation. All rights reserved.



T.W. Perry
Gaithersburg, Silver Spring, Baltimore
Hyattsville, MD, Springfield, Leesburg, VA
1-888-897-3779
www.twperry.com

The 2021 Contractor of the Year Awards

BEST OF SHOW



Case Architects & Remodelers—Merit Award for Residential Kitchen \$100,001 to \$150,000. PHOTO: STACY ZARIN GOLDBERG

The National Association of the Remodeling Industry (NARI) Metro DC Chapter announced the 2021 Contractor of the Year Awards during a virtual ceremony on February 5. The awards go to remodeling projects in DC, Maryland and Virginia; this year, judges reviewed 110 submissions in 34 categories. Media sponsor *Home & Design* gave its Award of Excellence to a KohlMark Group project. A list of the award-winning projects appears on these pages and can be viewed on the chapter's website, narimetrodc.org.



Superior Construction Services LLC—Grand Award for Residential Landscape Design/Outdoor Living over \$250,000. PHOTO: MARLON CRUTCHFIELD



Blue Star—Merit Award for Entire House \$750,001 to \$1,000,000. PHOTO: ANICE HOACHLANDER



Winn Design + Build—Grand Award for Entire House \$750,001 to \$1,000,000. PHOTO: STACY ZARIN GOLDBERG

2021 COTY AWARDS

HOME & DESIGN's Award of Excellence

KohlMark Group

Residential Bath under \$25,000

GRAND: HandyMensch Home Remodeling

MERIT: Balaton Builders

Residential Bath \$25,000 to \$50,000

GRAND: Capital Design, LLC

MERIT: Marks-Woods Construction Services, LLC

FINALIST: Tabor Design Build, Inc.

Residential Bath \$50,001 to \$75,000

GRAND: Landis Architects/Builders; Michael Nash Design, Build & Homes

MERIT: TriVistaUSA Design + Build

FINALIST: Schroeder Design/Build, Inc.

Residential Bath \$75,001 to \$100,000

GRAND: Lofft Construction Inc.; Michael Nash Design, Build & Homes

Residential Bath over \$100,000

GRAND: Michael Nash Design, Build & Homes

MERIT: Sun Design

Residential Kitchen \$30,000 to \$60,000

GRAND: Michael Nash Design, Build & Homes

MERIT: Smiley Renovations

FINALIST: Balaton Builders

Residential Kitchen \$60,001 to \$100,000

GRAND: FineCraft Contractors, Inc.

MERIT: Blue Star

FINALIST: Tabor Design Build, Inc.

Residential Kitchen \$100,001 to \$150,000

GRAND: Bowers Design Build, Inc.

MERIT: Case Architects & Remodelers

FINALIST: Sun Design

Residential Kitchen over \$150,000

GRAND: Bowers Design Build, Inc.

MERIT: Sun Design

FINALIST: Anthony Wilder Design/Build, Inc.

2021 COTY AWARDS

continued

Residential Interior under \$100,000

GRAND: Sun Design

Residential Interior \$100,000 to \$250,000

GRAND: Case Architects & Remodelers; HandyMensch Home Remodeling

MERIT: FineCraft Contractors, Inc.

Residential Interior \$250,001 to \$500,000

GRAND: Sun Design

MERIT: Michael Nash Design, Build & Homes

Residential Interior over \$500,000

GRAND: Schroeder Design/Build, Inc.

Residential Interior Element under \$30,000

GRAND: Blue Star

Residential Interior Element \$30,000 and over

GRAND: HandyMensch Home Remodeling

Commercial Interior

GRAND: Coupard Architects & Builders

MERIT: Lofft Construction Inc.

Residential Addition under \$100,000

GRAND: FineCraft Contractors, Inc.

Residential Addition \$100,000 to \$250,000

GRAND: Sun Design

FINALIST: FineCraft Contractors, Inc.

MERIT: FineCraft Contractors, Inc.

Residential Addition over \$250,000

GRAND: Marks-Woods Construction Services, LLC

MERIT: Marks-Woods Construction Services, LLC

FINALIST: Bowers Design Build, Inc.

Residential Exterior under \$50,000

GRAND: Presidential Exteriors

Residential Exterior \$50,000 to \$100,000

GRAND: Exterior Medics, Inc.

Residential Exterior \$100,001 to \$200,000

GRAND: Smiley Renovations

MERIT: TriVistaUSA Design + Build

FINALIST: Sun Design

Residential Exterior over \$200,000

GRAND: Sun Design

MERIT: Sun Design

Entire House under \$250,000

GRAND: Heltzelhaus, Inc.

MERIT: Michael Nash Design, Build & Homes

Entire House \$250,000 to \$500,000

GRAND: Moss Building & Design

MERIT: Abbey Design + Remodel

FINALIST: Michael Nash Design, Build & Homes

Entire House \$500,001 to \$750,000

GRAND: Finesse Design Remodeling

MERIT: Blue Star

FINALIST: Atlas Moran Construction

Entire House \$750,001 to \$1,000,000

GRAND: Winn Design + Build

MERIT: Blue Star

FINALIST: Michael Nash Design, Build & Homes

Entire House over \$1,000,000

GRAND: Bowers Design Build, Inc.

MERIT: KohlMark Group



Finesse Design Remodeling—Grand Award for Entire House \$500,001 to \$750,000. PHOTO: KENNETH M. WYNER



Michael Nash Design, Build & Homes—Grand Award for Basement \$100,000 to \$250,000.

Residential Historical Renovation/ Restoration \$250,000 and over

GRAND: Marks-Woods Construction Services, LLC

Basement under \$100,000

GRAND: Alair Homes Arlington

MERIT: Spectrum Design Build, Inc.

Basement \$100,000 to \$250,000

GRAND: Michael Nash Design, Build & Homes

MERIT: Moss Building & Design

FINALIST: Spectrum Design Build, Inc.

Residential Detached Structure

GRAND: Lofft Construction Inc.

Residential Landscape Design/ Outdoor Living \$100,000 to \$250,000

GRAND: Sun Design

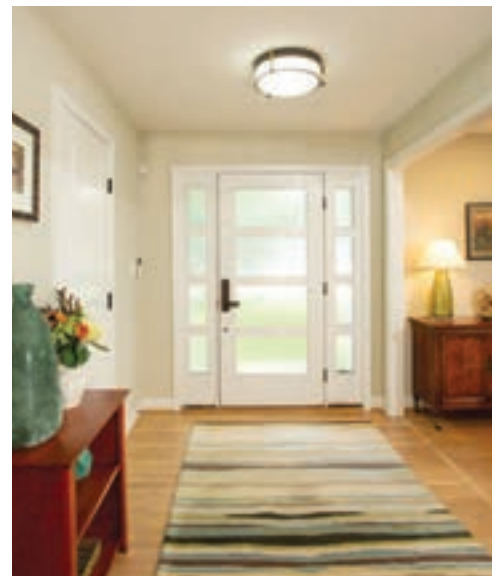
MERIT: Rust Construction

FINALIST: Michael Nash Design, Build & Homes

Residential Landscape Design/ Outdoor Living over \$250,000

GRAND: Superior Construction Services LLC

MERIT: Michael Nash Design, Build & Homes ■



Heltzelhaus, Inc.—Grand Award for Entire House under \$250,000. PHOTO: GREG HADLEY



Anthony Wilder Design/Build, Inc.—Finalist Award for Residential Kitchen over \$150,000. PHOTO: JACKIE ROBBINS



FineCraft Contractors, Inc.—Grand Award for Residential Addition under \$100,000. PHOTO: SUSIE SOLEIMANI



TriVistaUSA Design Build—Merit Award for Residential Bath \$50,001 to \$75,000. PHOTO: DARKO ZAGAR

Marks-Woods Construction Services

Five award-winning remodeling projects showcase innovation and style



1 MERIT AWARD: RESIDENTIAL ADDITION OVER \$250,000

For over 18 years, Marks-Woods Construction Services has specialized in residential design-build services in DC and Northern Virginia. A staff of 12 completes 55 projects annually, including kitchens, bathrooms, additions and whole-home renovations. From concept to construction, Marks-Woods relies on communication, attention to detail and customer service, creating customized solutions for each client's needs and lifestyle.



2 GRAND AWARD: RESIDENTIAL HISTORICAL RENOVATION/RESTORATION OVER \$250,000;
REGIONAL AWARD: RESIDENTIAL HISTORICAL RENOVATION/RESTORATION OVER \$250,000



3 MERIT AWARD: RESIDENTIAL BATHROOM \$25,000-\$50,000



4 REGIONAL AWARD: RESIDENTIAL ADDITION OVER \$250,000



5 GRAND AWARD: RESIDENTIAL ADDITION OVER \$250,000

- 1.** A stylish, multi-purpose rec space in Alexandria boasts a full bath, laundry, home gym/basketball court and wet bar.
- 2.** A three-story addition to a historic row house in Alexandria created an open-concept first floor with a large kitchen and an owners' suite on the floor above.
- 3.** An airy owners' bath in Burke, Virginia, showcases a clawfoot tub atop marble-mosaic floor tiles. A custom vanity and freestanding shower complete the space.
- 4.** A McLean project encompassed an open-plan kitchen with custom cabinets and an oversized island. An addition houses an owners' suite above a two-car garage.
- 5.** Craftsmanship elevated this owners' suite addition and interior renovation, which boasts handcrafted built-ins, an enlarged kitchen with custom cabinetry and a two-story foyer.



MARKS-WOODS CONSTRUCTION
703-838-9788 • markswoods.com

Michael Nash Design, Build & Homes

An chic, open-concept owners' bath incorporates a wet zone and a stylish aesthetic



McLean homeowners contacted Michael Nash to overhaul their dated owners' bath. They wanted to increase its size and implement an open concept with the tub and shower-contained within a wet zone while the vanity and toilet would occupy a separate part of the bathroom.

The design team borrowed space from an adjacent storage area to enlarge the room. They placed a freestanding soaking tub below a window and installed an open shower system beside it. Shifting the locations of the closet and entry doors allowed for a long double vanity and a linen closet; a WC is located opposite the vanity wall with a makeup table beside it.

Taupe vanities are topped with white marble, while large-scale marble-look tile clads the floor and mosaics embellish the vanity area behind medicine cabinets lit by LEDs.



CONTRACTOR OF THE YEAR
AWARD COMPETITION

M *michael***NASH**
DESIGN • BUILD & HOMES
The Ultimate in Luxury™

MICHAEL NASH DESIGN, BUILD & HOMES
703-641-9800 • michael-nash.com

Michael Nash Design, Build & Homes

A kitchen with waterfront views and modern amenities



With a lakefront townhome, homeowners wished to enjoy their water views—especially while cooking. However, they were hampered by their cramped galley kitchen, which didn't take advantage of its scenic location. The owners hired Michael Nash to modernize the kitchen, create additional room for storage and open the space up to the lake.

The design team began by removing bearing walls and rerouting plumbing and mechanical systems to eliminate obstructions to the view. Structural beams were inserted to support the front and back walls. The kitchen was expanded into the breakfast area, which overlooks the views.

A large central island holds a cooktop and beverage center while a smaller one provides space for food prep. Marble-look countertops and backsplash complement a linear, porcelain-tile floor.



CONTRACTOR OF THE YEAR
AWARD COMPETITION

M *michael***NASH**
DESIGN BUILD & HOMES
The Ultimate in Luxury™

MICHAEL NASH DESIGN, BUILD & HOMES
703-641-9800 • michael-nash.com

FineCraft Contractors, Inc.

Five award-winning transformations unite form, function and flow—inside and out



1 MERIT AWARD: RESIDENTIAL ADDITION UNDER \$100,000

FineCraft Contractors, Inc., has been building and transforming homes for 35 years. The company's 30 employees complete more than 50 projects a year, from large bathrooms and kitchens to whole-house remodels, additions and custom homes. FineCraft is family-owned and operated, with a focus on details, personal care and dedicated attention to clients.



2 GRAND AWARD: RESIDENTIAL KITCHEN \$60,000-\$100,000



3 MERIT AWARD: RESIDENTIAL ADDITION \$100,000-\$250,000

4 FINALIST AWARD: RESIDENTIAL ADDITION \$100,000-\$250,000



5 GRAND AWARD: RESIDENTIAL INTERIOR \$100,000-\$250,000

- 1.** Spare, steel framing imparts a modern feel to a screened porch warmed by varnished wood. A wood-burning fireplace creates a focal point.
- 2.** To open up a cramped kitchen, FineCraft installed a steel beam. The completed kitchen is airy and light, designed in chic, transitional style with the latest amenities.
- 3.** A cantilevered bump-out contains the sitting area in a remodeled owners' suite, with tree-level views of the backyard. The owners' bath and walk-in closet were also revamped.
- 4.** An interior remodel updated the look and feel of a dated house with clean, modern features. Rooms such as the owners' bath went from dark and compartmentalized to open and light.
- 5.** An intricately paneled wood ceiling characterizes a Craftsman-style screened porch; at its center, a charming eyebrow window adds personality and interest to the space.



FINECRAFT CONTRACTORS, INC.
301-330-9191 • finecraftcontractors.com

Michael Nash Design, Build & Homes

A multi-level outdoor living area takes advantage of its scenic locale



A year after Michael Nash completed a sun-room addition in Virginia, its longtime owners turned to the same team to extend the new structure with a porch and multi-level deck that would allow them to better enjoy their scenic, wooded surroundings.

The new 16-by-25-foot porch is anchored by a linear gas fireplace in a stone surround, with an all-weather TV hanging above it. Cedar ceiling panels, porcelain floor tiles and two skylights add light and interest. Beneath the porch, an enclosed storage area houses lawn equipment and outdoor furniture in winter.

Clad in Trex, the deck, used for dining and grilling, leads down to a large flagstone patio, accessible from the home's lower level. It boasts an outdoor fireplace and knee walls for additional seating.



CONTRACTOR OF THE YEAR
AWARD COMPETITION

M *michael***NASH**
DESIGN BUILD & HOMES
The Ultimate in Luxury

MICHAEL NASH DESIGN, BUILD & HOMES
703-641-9800 • michael-nash.com

Michael Nash Design, Build & Homes

A townhouse combines modern convenience and a vintage vibe



A family called on Michael Nash to update the residence prior to their moving in. On their wish list: an open-plan main level with a new kitchen; a remodeled owners' suite; and a finished third floor housing bedrooms and a shared bath.

Raised ceilings, a brick-veneer wall, hardwood flooring and built-ins enhanced the main level, where a new gas fireplace anchors the living room and a convenient powder room has been added. The new kitchen conjures a vintage look with a wall of brick veneer and traditional cabinetry.

Upstairs, the revamped owners' suite features a deck with views of Old Town, his-and-her closets and an enlarged bath. A study is accessible through French doors and a closet contains a stackable washer and dryer.



CONTRACTOR OF THE YEAR
AWARD COMPETITION

M *michaelNASH*
DESIGN BUILD & HOMES
The Ultimate in Luxury™

MICHAEL NASH DESIGN, BUILD & HOMES
703-641-9800 • michael-nash.com

Bowers Design Build

Four award-winning projects exemplify versatility and style



1 FINALIST AWARD: RESIDENTIAL ADDITION OVER \$250,000

Founded 31 years ago, Bowers Design Build prioritizes extraordinary customized design and a customer-focused process. Says principal Wilma Bowers, "We deliver a level of performance that sets the pace for exceptional service in our industry." Specializing in complex renovations, a staff of 20 architects, interior designers and construction experts completes 15 projects a year.



2 GRAND AWARD: RESIDENTIAL KITCHEN \$100,000 TO \$150,000



3 GRAND AWARD: ENTIRE HOUSE OVER \$1 MILLION



4 GRAND AWARD: RESIDENTIAL KITCHEN OVER \$150,000

1. Bowers was asked to create an elegant, functional two-story addition to a 1940s Colonial in Arlington. It contains a new kitchen that opens out to a patio, with an owners' suite above. Existing spaces were also refreshed.

2. The owners of a 1939 Arlington Colonial hired Bowers to update their kitchen while respecting their home's traditional look. A new layout, storage, lighting and a large central island transformed the space in clean-lined style.

3. Empty-nester clients with a wooded property in McLean wished to modernize their home with better indoor-outdoor flow. A whole-house redo and rear addition created comfortable living and entertaining spaces that welcome extended family.

4. Bowers relocated a McLean kitchen to a more central location, then designed the new space in unobtrusive, modern style as a backdrop for entertaining. Frameless cabinets and appliances with minimal handles met the owners' needs.



CONTRACTOR OF THE YEAR
AWARD COMPETITION



BOWERS DESIGN BUILD

703-506-0845 • bowersdesignbuild.com



Established in 1989, Abbey Design + Remodel is a one-stop destination with a vast selection of cabinetry, flooring and much more. Our 11,000 square-foot studios in Sterling & Leesburg showcase more than 10,000 products styles to remodel your kitchen, bath, basement or whole home. Abbey Design + Remodel invites you to their studios for a complimentary consultation and to view their products first-hand.



Abbey Design + Remodel

Merit Award for Entire House \$250,000-\$500,000



The owner of a 2002 home in Ashburn, Virginia, turned to Abbey Design + Remodel to help her put her personal stamp on the interiors. The project included remodeling the kitchen and three bathrooms; creating a library; and changing the floor coverings on the main floor and two staircases.

The design team coupled semi-custom cabinets by Fieldstone Cabinetry with Azul Aran granite countertops in the kitchen. Planks of COREtec luxury vinyl clad the floors on the main level, addressing the homeowner's concerns about durability to withstand the wear and tear of her pets.

- The owners' bath combines furniture-like cabinetry and top-of-the-line fixtures, including a steam generator in the shower.
- A two-story staircase was transformed when its traditional baluster was replaced with one made of iron.



CONTRACTOR OF THE YEAR
AWARD COMPETITION



ABBEY DESIGN + REMODEL

703-450-8181 • abbeyremodel.com

Michael Nash Design, Build & Homes

An ambitious redo creates an airy, open-plan kitchen/family room



To expand the space of this kitchen, the design team removed a bearing wall separating it from the adjacent family room; the new open plan made way for a large island housing a sink, a dishwasher and a microwave. A 48-inch professional range was relocated to accommodate a wall of floor-to-ceiling cabinetry while a closet on another wall was replaced with a large-scale refrigerator, freezer columns, secondary ovens and pantry cupboards.

Clean-lined white cabinetry is paired with soapstone countertops and a textured, white-tile backsplash. Wide-plank espresso hardwood floors and chic glass pendants over the island complete the look.



CONTRACTOR OF THE YEAR
AWARD COMPETITION

M *michaelNASH*
DESIGN • BUILD & HOMES
The Ultimate in Luxury™

MICHAEL NASH DESIGN, BUILD & HOMES
703-641-9800 • michael-nash.com

Michael Nash Design, Build & Homes

A remodeled owners' bath imparts serenity and style



A couple tapped Michael Nash to overhaul the owners' bath, which was poorly laid out with a decked tub that took up too much space, a cramped shower stall and a too-small vanity.

The design team conceived an open plan that reconfigured the space. The over-sized tub was replaced by a freestanding version tucked into a window bay, and a new, glass-enclosed shower is clad in river rock. A double vanity with plenty of storage occupies one wall, while another houses a makeup table; the WC lies unobtrusively between the two.

River rock flooring delineates the area around the tub and shower, while wood-look porcelain-tile clads the rest of the floor. The vanity and storage cabinets are finished in a pale, glazed-gray hue; the vanity is topped with granite and embellished with teardrop mosaic glass-tile accents.



CONTRACTOR OF THE YEAR
AWARD COMPETITION

M *michael***NASH**[®]
DESIGN • BUILD & HOMES
The Ultimate in Luxury™

MICHAEL NASH DESIGN, BUILD & HOMES
703-641-9800 • michael-nash.com

BEFORE + AFTER

Three COTY award-winning projects marry innovation and style



**THEN +
NOW**





1 Marks-Woods Construction Services elevates a McLean abode with enhanced finishes and functionality

Tasked with overhauling a dated split-level in McLean, Marks-Woods Construction added efficiency and living space, upgraded interior finishes and improved the exterior. “The family wanted a large primary suite with privacy from a new open-concept kitchen and living area,” explains partner and project manager Drew Marks. “Working with architect Kim Beasley, we determined that a side addition would best provide that separation.” The addition includes a new two-car garage and mudroom; a craft room now occupies the basement space, replacing a one-car garage.

On the main floor, the original kitchen and an adjacent playroom were combined to create the new kitchen (above and left), featuring an oversized island, hand-painted terracotta backsplash tile, custom cabinets and a custom hood trimmed in brass. A soaking tub and patterned floor tile distinguish the owners’ bath (opposite, top left).

To convey a sense of arrival, the design team created an arched transom and sidelites around the front door; they also widened the stair in the foyer, adding a custom handrail and balusters. Garage doors and a front door of rich mahogany lend a cohesive look to the façade (opposite, top and center right), which conjures a classic feel with white-painted brick and black shutters.

Award: Regional Winner, Residential Addition over \$250,000. Renovation Architecture: Kim Beasley, Beasley Architectural Group, LLC, Alexandria, Virginia. Contracting: Drew Marks, Marks-Woods Construction Services, Alexandria, Virginia. Text: Julie Sanders. Photography: Jenn Verrier.



THEN +
NOW



2 Sun Design turns a mundane backyard into a welcoming, indoor-outdoor retreat

After working out of their house for a while, an Alexandria couple decided to embark on some home improvements. With young kids who love to play in the backyard, “they wanted a better indoor-outdoor connection for their family that would improve their work/life balance,” says Bob Gallagher of Sun Design, who was hired for the job.

The plan added on a gabled rear porch (top, right), accessible from the kitchen, dining and living areas through double glass doors (above, right). Stone floors and a vaulted fir ceiling are a welcoming backdrop for lounging (left) and dining areas as well as a kitchen (above, left) with bar-height seating, resin cabinets by NatureKast, quartz counters and a TV. A stone fire pit nestles in a far corner of the yard.

The owners also wished to enhance the curb appeal of their home, which occupies a corner lot. The side garage was reconfigured with carriage lights and a standing-seam metal overhang. A driveway paved in bluestone and concrete conveys a clean, crisp look.

Award: Grand, Residential Exterior over \$200,000. Renovation Design & Contracting: Bob Gallagher and Greg Gunther, project managers, Sun Design, Burke, Virginia. Text: Julie Sanders. Photography: Greg Hadley.



PHOTOS COURTESY OF MARVIN WINDOWS

SANDY SPRING
 — BUILDERS —
 EST 1982

YOUR BUILDER FOR LIFE
 SANDYSPRINGBUILDERS.COM



PENZA+BAILEY
 ARCHITECTS

Custom Design / Additions /
 Transformations
 410.435.6677 • penzabailey.com

AWARD-WINNING CABINETS DISTRIBUTORS



ONLINE AT WWW.NVSKB.COM

NVS | **KITCHEN & BATH**
 DIFFERENT BY DESIGN

As one of Northern Virginia, Maryland, and DC's largest suppliers of high-end, wholesale cabinetry, we invite you to visit our 6,000 square feet showroom in Manassas, or our more intimate McLean Design Studio, to experience what sets NVS apart from other cabinetry suppliers.



THEN +
NOW



3 Bowers Design Build brings organic flair and a contemporary touch to a classic family home

The owners of a traditional McLean residence wished to expand their living space while imparting a clean, modern look. They tapped Bowers Design Build to create a streamlined, two-story rear addition (left) oriented towards the leafy yard; it contains an upper-level sun-room and a lower-level space for lounging (above), anchored by a ledgerstone fireplace.

"The new addition sets a modern tone for the rest of the renewed home," says principal Wilma Bowers. "We replaced sun decks with a conditioned volume that opens to the wooded property and brings the outdoors in." Wrapped in durable machiche wood with a concrete-look paneled chimney, the new structure spills out to a deck that leads to a patio below.

The design team reconfigured the interiors in contemporary style to accommodate an open-plan kitchen/family room (top, left); a library with floating walnut shelving; a two-sided gas fireplace clad in limestone; and a new, steel-and-white-oak floating stair (top, right). They added modern curb appeal to the front of the house with expansive Kolbe windows and a sleek front door.

Award: Grand, Entire House Renovation over \$1 Million. Renovation Design & Construction: Bruce Bowers, principal, Bowers Design Build, McLean, Virginia. Text: Julie Sanders. Photography: JW Smith Photography.



Photos: Kenneth M. Wyner Photography

McLean, Virginia

703-241-5588 | www.barbarahawthorninteriors.com



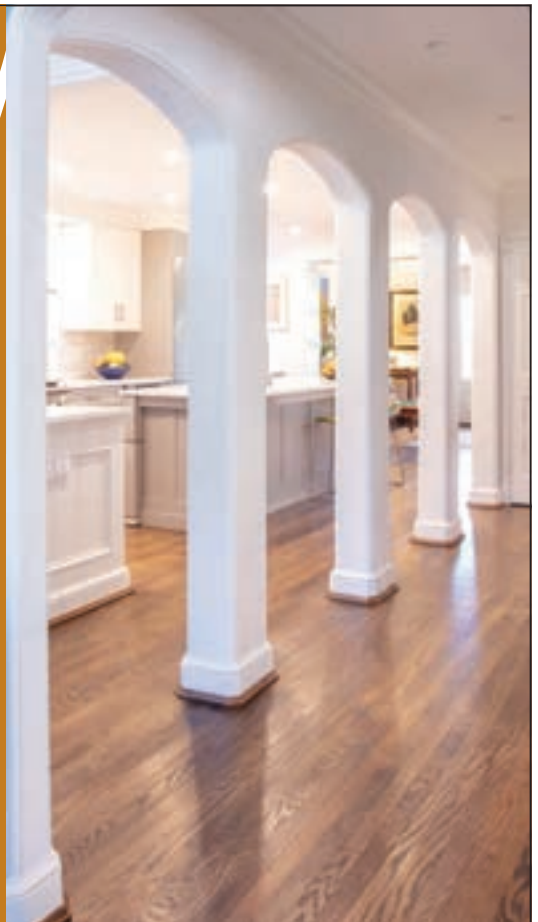

WENTWORTH
ARCHITECTS & BUILDERS

—

ARCHITECTURE
INTERIOR DESIGN
CONSTRUCTION
REMODELING

—

CHEVY CHASE
240 752 6102
WENTWORTHSTUDIO.COM





Bob Narod, Photographer, LLC

www.narodphoto.com



DESIGN BY STUART KITCHENS



12213 Sugar Creek Court • Herndon, VA 20170 • 703-926-8465



CARPET CREATIONS & FLOORING

301.881.3399 | carpetcreations@verizon.net | [@carpetcreationsandflooring](https://www.instagram.com/carpetcreationsandflooring) | www.carpetcreationsandflooring.com



Schedule a FREE consultation:
703-464-0736 • service@imsva.com
www.imsva.com



**INTEGRATED
MEDIA SYSTEMS**

Home Theater • Distributed Audio & Video
WiFi & Wired Networks • Automation & Control
Video Surveillance • Alarm & Access Control
Lighting & HVAC Control • Motorized Shading
Outdoor Lighting & Sound
Low Voltage LED Lighting Fixtures





CUTTING EDGE

Metalwork by local artisans elevates the style quotient indoors and out

Text by JULIE SANDERS



▲ **POINT OF INTEREST** Steve Prudhomme of Metal Specialties, Inc. (540-967-4836), fabricated a sleek, hot-rolled-steel fireplace surround for an Alexandria penthouse during a renovation by Runningdog Architects. Conceived by interior designer Katie Otis, the fireplace anchors the long room, adding vertical interest to the space. PHOTO: STYLISH PRODUCTIONS

◀ **LIGHT SHOW** Collaborating with Carib Daniel Martin Architecture + Design, Gutierrez Studios fabricated and installed a three-story, wood-and-steel staircase in a Wesley Heights home; an integrated screen wall channels light while also showcasing the owners' ceramics collection on movable, cantilevered shelves. gutierrezstudios.com PHOTO: ANICE HOACHLANDER



runningdog
Architects

www.runningdogarchitects.com

kensington | MD

301.654.1800



SAIENNI STAIRS

Custom Stairs & Rails by Design

120 Sandy Drive, Suite E Newark, DE 19713
(302) 292-2699

www.saiennistairs.com

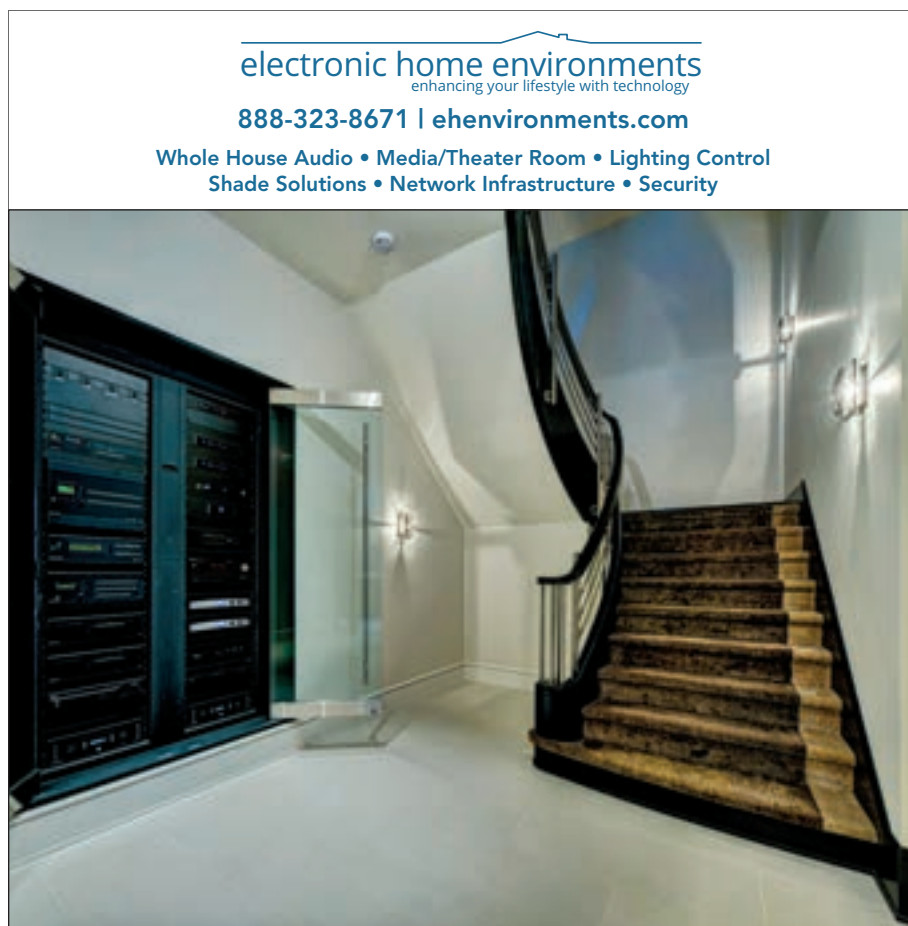
20616 Costal Hwy, Unit 3 Rehoboth Beach, DE 19971
(302) 567-2561



build+remodel



SEASIDE STYLE Pennsylvania-based Compass Ironworks was hired to design, fabricate and install a third-floor exterior stair on a Jersey Shore condo. The result was a sleek, high-grade aluminum spiral stair, powder-coated in an eco-friendly finish to withstand the harsh oceanfront environment. compassironworks.com PHOTO: DONNA CHIARELLI



TOUCH OF GLAM Shazalynn Cavin-Winfrey of SCW Interiors tapped AK Metal Fabricators, Inc., to create a shelf system in a glamorous scullery she was designing for clients in Alexandria. A stainless-steel frame in a mirror finish supports tempered-glass shelves; the system complements a backsplash of antiqued-mirror panels. akmetalfab.com PHOTO: ANGIE SECKINGER

BACK TO NATURE During the overhaul of a wooded property in Great Falls, Cardine Studios was commissioned to design and fabricate a steel railing leading to the home's side entrance. Its graceful leaves and branches reflect the setting; they were handcrafted using traditional forging techniques. cardinestudios.com PHOTO: ISABELLA LASH



AN AWARD WINNING FIRM
 With an Exquisite Tile & Custom Cabinetry Collection
 240-361-9331 • davidaskitchenandtiles.com
 435 A&B East Diamond Avenue, Gaithersburg, MD 20877

FAST STATS

IN TIME FOR SPRING

Remodeling's 2020 Cost vs. Value Report indicates that in our region, a wood deck addition will recoup 77 percent of its cost while a composite deck addition will recoup 66.6 percent.

PRO TIP

"Older pool decks are often made of concrete or flagstone, which can absorb a lot of heat. Travertine doesn't get so hot, while pavers also make good decking material because they don't crack and heave like concrete."

—BARRY SCHNEIDER, SURROUNDS, INC.

RISING COSTS

Lumber prices have spiked more than 180 percent since April 2020, increasing the cost of an average new single-family home by more than \$24,000, according to the National Association of Home Builders.

FORBES
 DESIGN CENTER
 WINDOWS
 DOORS
 ROOFING
 HARDWARE

WWW.FORBESDESIGNCENTER.COM

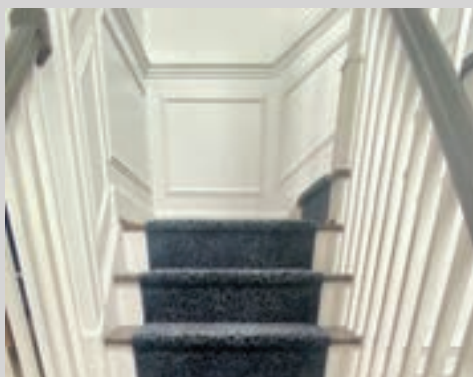
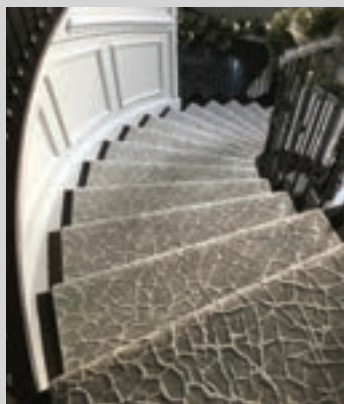
THE FORBES DIFFERENCE: Best in Class Customer Experience & Installation. Forbes' Project Managers will thoughtfully guide you through every step in your home improvement journey.

TIMONIUM | 410-252-1009 | BETHESDA

PROUD SUPPLIER & INSTALLER OF
MARVIN



Randolph Flooring & Cabinetry • 5600 Randolph Road • Rockville, MD 20852
 301-770-5600 • randolphflooring.com • Instagram: @randolph_floor



Family owned and operated • In-house client services • Estimates • Complimentary Consultation
 Delivery • Installation • Handmade Rugs • Resilient Flooring • Hardwood • Open to the trade and public
 Serving Maryland, Virginia, and Washington, DC.



Photo©: Bob Narod; Design by Jennifer Gilmer Kitchen & Bath



**Distinctive Quality,
 Fabrication & Installation**

- Frameless Shower Enclosures
- Custom Mirrors | Glass Table Tops
- Beveling in Our Facility
- Framed Shower Enclosures
- Cast Glass | Integral Cabinets

8246 D Sandy Court Jessup, MD 20794
 Tel 301.984.7500 / 301.490.8824
 hutchisonglassandmirror.com



LOOK FOR
FINE FURNISHING IDEAS
 AT
HOMEANDDESIGN.COM





Faith Wilson's painted floorcloths explore the boundaries of a traditional craft

REACHING OUT

Text by TINA COPLAN

In artist Faith Wilson's enchanting cosmos, chairs wander aloft in space. Silhouetted blackbirds stand solo or in rows, sometimes upside down. It is a world in flux and a heartening one, where bright stars hover and uplifting words glide by—*love, joy, be alive*. It might be a metaphor for our own topsy-turvy times. In fact, Wilson has been arranging such elements in painted floorcloths for more than two decades.

"My work has always been intimate, expressing my own life experiences or my thoughts," says the artist, who has spent most of her years in or near Chestertown, Maryland. "I have a romantic vision of the past and the lives we have led. Certain leitmotifs have carried through."

In her personal lexicon, a simple chair becomes a comforting place to eat, work, talk to others or daydream. Common blackbirds take their cue from Maryland poet Susan Argo, who called them the punks of the bird world. "Having grown

PORTRAIT: LANI SEIKALY



In her Chestertown studio, Wilson (top) renders delightful creations layered with color and personal meaning. Above, left to right: *Requiem to Dawn* and *Daydream Chair* feature birds and chairs, representing transitions in the artist's world view.

up with a punk background in my 20s,” Wilson fondly recalls, “I love that comparison.” Like the swaying grasses and gentle waters in her work, birds signal “our spiritual connection to nature,” she notes, adding, “All of these images are almost waking dreams, transitions between here and there.”

It may seem a paradox that the artist’s universe of wistful reverie inhabits humble floorcloths—utilitarian and highly durable coverings intended to be walked on. Yet that practical blend demonstrates the importance she places on handcraft in our lives. “Your grandmother’s quilt or a bowl someone carved aren’t just objects, they’re objects with meaning. Someone touched them,” explains the self-taught artist. “I’m trying to make something functional and interesting. You can’t help but put yourself into that.”

Wilson’s intuitive style is grounded in her early years. Raised in Latin America and California, she was surrounded by art. Her father, Lex Wilson, an abstract-expressionist painter, was also a potter and photographer. Her mother, Katherine, a docent at the Museum of Contemporary Art San Diego, collected paintings mostly by contemporary Latin American artists.

After graduating from high school at 16, Faith Wilson was presented with two choices: go to college or get a job. “I wanted to think of a third alternative—that turned out to be weaving tapestry. I fell in love with the materials,” she remembers. Hitchhiking around Europe and in Central America, she gravitated to places where weaving was happening. When she returned to the U.S. in 1975, Wilson decided to join her sister, who was living in Chestertown. As it turned out, that sibling, Marilee Schumann, became a potter and sculptor. Both now show their art at Create Gallery in Chestertown. In recent years, Wilson also has exhibited at the Philadelphia and Smithsonian craft shows.

Along the way, the artist worked with mixed media on wall pieces. She transitioned to making floorcloths almost by chance. While married to a decorative painter, she recalls, “I learned a lot of decorative techniques and started experimenting with materials we had on hand.



My first pieces were actually painted drop cloths.”

Wilson still applies those same techniques, which bring depth of color and nuanced pattern to each one-of-a-kind piece. To start, she stretches heavy canvas over plywood and covers both sides with a base coat of paint. Several layers of color mixed with translucent glazes are brushed on. Typically, five layers are built

Wilson’s recent *Blue Colorfield 2* (left) pays homage to post-War, abstract-expressionist painters. The artist stencils “visually beautiful” words on works such as *Live Love* (below, left).

up and then partially removed with rags, folded paper or possibly the artist’s own hands. “That process is always fun and interesting,” says Wilson, who may place images on a subsurface, meant “to be barely seen, to be subconscious.”

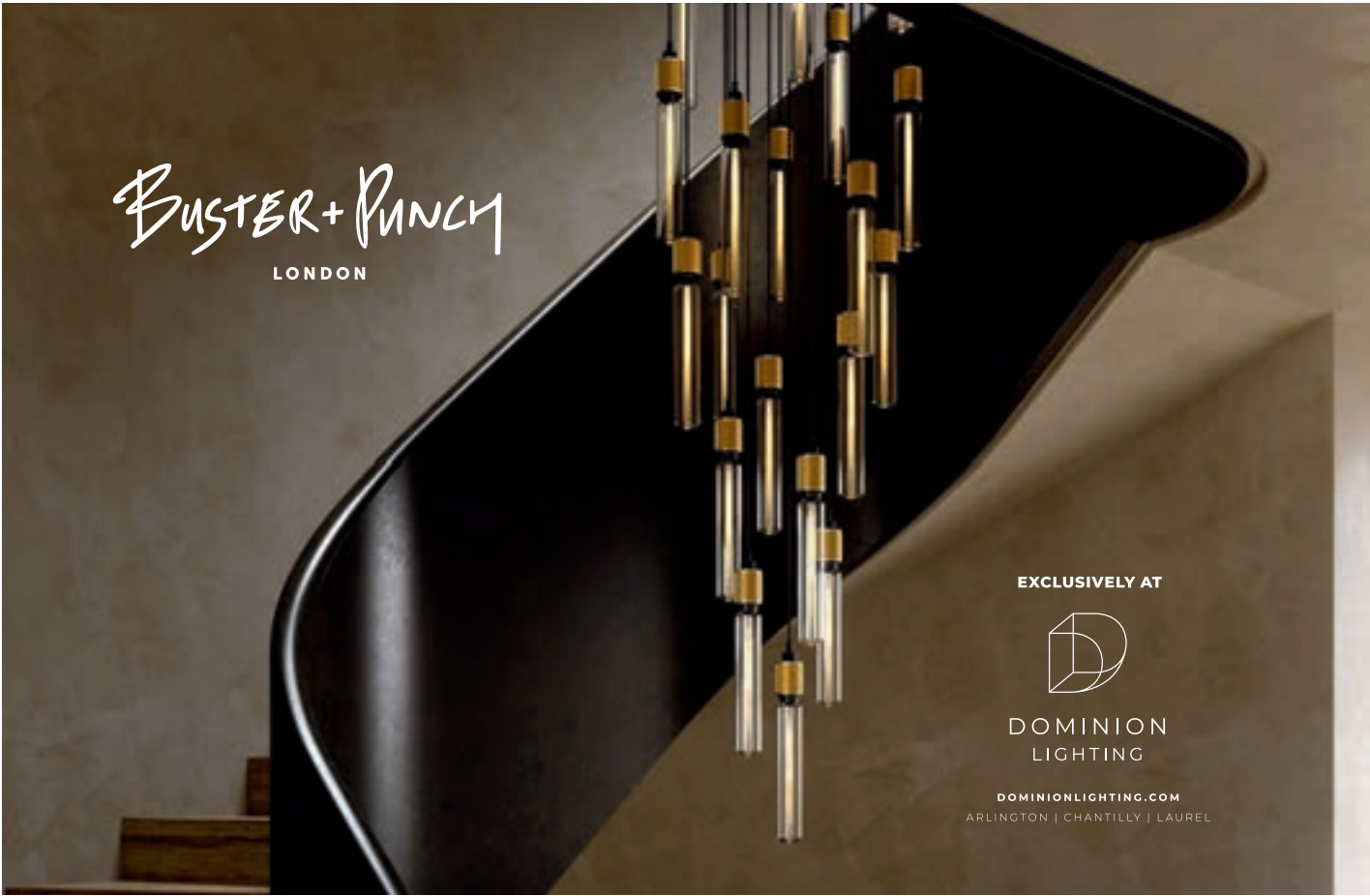
In addition, she sometimes paints circles freehand, or stencils on moons, grasses or words. “I make all the stencils myself, so I can repeat the motifs and have a clean-edged look,” she says, observing that the words are less about their meaning than that she finds text “visually beautiful.” Her newest floorcloths introduce bold color fields that revisit her early appreciation for the paintings of post-World War II artists, especially Mark Rothko and Jasper Johns.

“Part of the satisfaction in making floorcloths,” Wilson says, is “they really can transform a space.” One recent commission proves the point. That large piece, designed for the dining room of Haitian-art collectors living in Charlottesville, references work by developing-world artists as well as her own motifs—from its central emblem, inspired by a Haitian bowl, to its checkerboard border of marching birds.

Asked how she felt about covering up that charming artwork with furniture, Wilson responds without hesitation: “That’s what it’s all about. Go ahead and put your table and chairs on it.” Calling floorcloths “one of the really true American crafts,” she describes how in Colonial times in Chestertown, floorcloths were made from the canvases of leftover sails, to replace expensive rugs imported from Europe.

“At the end of the day, what gives our lives and our homes meaning?” the artist ponders. “I want to make something beautiful. I want to make something original. And I want to make something useful.” ■

Faith Wilson’s floorcloths are available at Create Gallery in Chestertown (createartcraftdesign.com) and through the artist’s website: faithwilsonart.com.



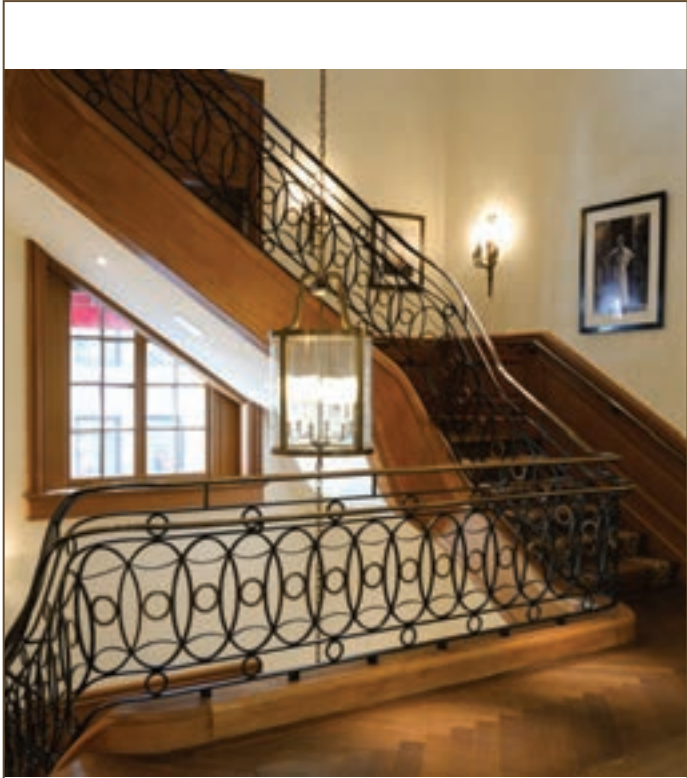
BUSTER + PUNCH
LONDON

EXCLUSIVELY AT



DOMINION
LIGHTING

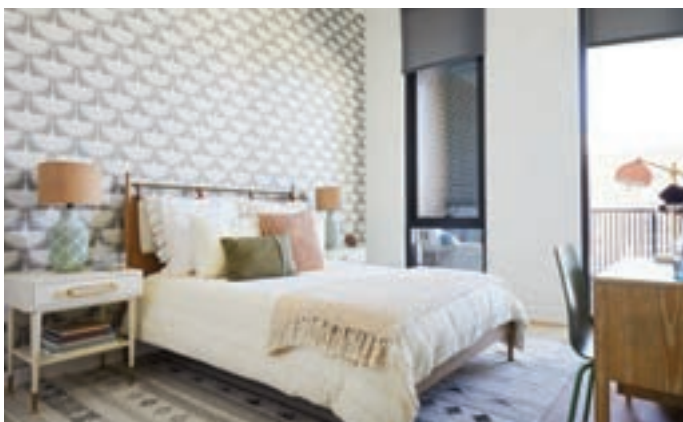
DOMINIONLIGHTING.COM
ARLINGTON | CHANTILLY | LAUREL



CARDINE STUDIOS
540-439-6460
www.cardinestudios.com



BECKER
MORGAN
GROUP
ARCHITECTURE
ENGINEERING



THE ELM

The latest—and tallest—residential addition to Bethesda’s bustling cityscape is now leasing its 456 apartments. Located in the center of town at 4710 Elm Street, The Elm’s two 28-story towers contain options ranging from studios to three-bedroom units; two-level lofts and penthouses are also available. The Elm features a landscaped, 17th-floor terrace with grilling stations; a rooftop deck with a pool; and a glass Skybridge on the top floor that connects the two apartment towers and offers panoramic views. The glass-walled structures include ground-floor retail and were developed by Carr Properties. Scandinavian-inspired interior architecture is by Edit Lab at Streetsense. livetheelm.com

The sales price for abolitionist Frederick Douglass’ Capitol Hill residence—the highest on record for a Capitol Hill home.

\$4.995
MILLION

TOP TEN HOME SALES

PRICE	ADDRESS	CITY, STATE
\$5,700,000	3099 Q Street, NW	Washington, DC
\$5,450,000	2202 Ballard Ridge Drive	Charlottesville, VA
\$5,100,000	6404 Garnett Drive	Chevy Chase, MD
\$4,350,000	5031 Lowell Street, NW	Washington, DC
\$4,300,000	2615 30th Street, NW	Washington, DC
\$4,200,000	9034 Bronson Drive	Potomac, MD
\$3,895,000	4014 49th Street, NW	Washington, DC
\$3,725,000	2101 Foxhall Road, NW	Washington, DC
\$3,580,000	2122 Bancroft Place, NW	Washington, DC
\$3,325,000	18 Wolfe Street	Alexandria, VA



NOTABLE LISTING

Along with its \$24.9 million price tag, this Georgian-style estate on the Severn River boasts a colorful history. It was built in 1922 by an arms dealer who modeled it after a James River plantation house, and later served as a Capuchin monastery. The 23-acre property was purchased in the early 2000s and respectfully modernized by Annapolis architect Charles Anthony. Today, in addition to seven bedrooms, eight-and-a-half baths and 11 fireplaces, the 35,435-square-foot home features such amenities as indoor and outdoor pools, a wine cellar, a nine-car garage, a tennis court, an Asian tea house, a guest house and a private dock.

1604 Winchester Road, Annapolis. Inquiries: Brad Kappel, TTR Sotheby’s. 410-280-5600; ttrsir.com

John Edelmann & Jeff Love

TTR Sotheby's International Realty

Specializing in:

- ▶ Luxury homes in Washington, DC and Arlington, VA
- ▶ Montgomery Co., MD

eltgroup.ttrsir.com
202-423-6900



Lynda O'Dea

Legendary Homes/Long & Foster

Specializing in:

- ▶ Bethesda, Chevy Chase, Potomac
- ▶ McLean & NW DC

legendaryhomes.com
240-988-4400



Casey Margenau

Fine Homes & Estates

Specializing in:

- ▶ Northern Virginia
- ▶ Newer Fine Homes

margenau.com
703-827-5777



Fouad Talout

Long & Foster

Specializing in:

- ▶ Luxury Real Estate
- ▶ Exclusive confidential representation
- ▶ MD, DC & VA

fouadtalout.com
703-459-4141



Barbara Watkins

Benson & Mangold Real Estate

Specializing in:

- ▶ Talbot, Queen Anne, Dorchester, Caroline
- ▶ \$500,000 & up

easternshore
homes.com
410-310-2021



TOP REALTORS FOR LUXURY HOMES



3846 Cathedral Avenue NW

THE EDELMANN LOVE TOREGAS GROUP
WE SELL THE MOST IMPORTANT HOME IN THE WORLD, YOURS.

Welcome to this exceptional Tudor townhome on a large corner lot in Cathedral Heights. This elegant home features: 6 spacious bedrooms and 6.5 baths, a custom chef's kitchen with a separate breakfast room with access to a lovely private deck perfect for outdoor dining, expansive dining room, formal living room with fireplace, charming solarium overlooking the beautiful garden and its fountain, a main floor study and a comfortable family room on the first floor. The lower level features a separate apartment and a large, two-car garage. This gracious home and its verdant gardens offer a tranquil oasis in the center of the city.

Price available upon request

Presented by John Edelmann and Chadley Torgas



John Edelmann and Chadley Torgas

Residential & Commercial Real Estate
Serving DC, MD and VA

Sales +1 202 423 6900 | eltgroup.ttrsir.com
jedelmann@ttrsir.com
ctorgas@ttrsir.com | +1 240 421 1787

Arlington Brokerage, 2300 Clarendon Blvd, Suite 200 Arlington, VA 22201 | +1 703 745 1212

TTR | Sotheby's
INTERNATIONAL REALTY





2700 Calvert St NW #215
Mass Avenue Heights | \$1,995,000



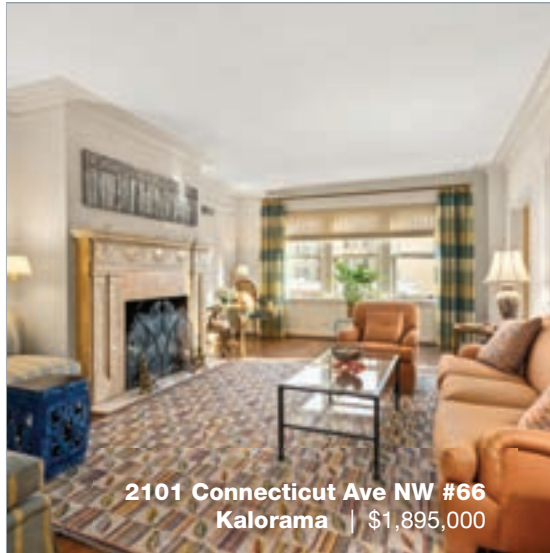
2101 Connecticut Ave NW #44
Kalorama | \$1,625,000



2501 M St NW #409
West End | \$825,000



2339 Massachusetts Ave NW #4
Kalorama | \$3,795,000



2101 Connecticut Ave NW #66
Kalorama | \$1,895,000



2101 Connecticut Ave NW #2
Kalorama | \$1,795,000

Marin Hagen & Sylvia Bergstrom

LIFETIME TOP PRODUCERS • \$1 BILLION+ IN CAREER SALES • WSJ/REALTRENDS: AMERICA'S BEST AGENTS



Sylvia Bergstrom has been a top producing agent since starting real estate in 1973, and Marin Hagen joined her mother's successful real estate practice in 2007. They count among their clients Presidential candidates, Senators, Members of Congress, Cabinet secretaries, ambassadors, governors, leaders in the arts, medical, business, legal, non-profit and more. Their business is nearly 100% repeat and referral, a testament to their high ethical standards, strong negotiating skills, energy and discretion. Sylvia and Marin consistently rank among the top 3 Coldwell Banker teams in the Mid-Atlantic, among over 2,000 associates in 30 offices.

SYLVIA BERGSTROM
202.471.5216
sylvia@cbrealty.com

MARIN HAGEN
202.471.5256
marin@cbrealty.com

HAGENBERGSTROM.COM  

© 2015 Coldwell Banker Residential Brokerage. All Rights Reserved. Coldwell Banker Residential Brokerage fully supports the principles of the Fair Housing Act and the Equal Opportunity Act. Operated by a subsidiary of NRT LLC. Coldwell Banker and the Coldwell Banker Logo are registered service marks owned by Coldwell Banker Real Estate LLC.



SHERIDAN-MACMAHON

REALTORS

110 E. Washington St. | P.O. Box 1380 | Middleburg, VA 20118 | 540.687.5588 | sheridanmacmahon.com



RUTLEDGE FARM

MIDDLEBURG, VIRGINIA

Premier Middleburg estate | Main house of stone and frame construction circa 1740 w/addition in 1820. 6 BR, 3 1/2 BA, 5 FP, high ceilings, moldings & detailed woodwork throughout | Equestrian facilities are unmatched | 113 lush acres. 5 barns totaling 35 stalls | 19 paddocks | Derby field | 218 x 80 indoor arena | 250 x 150 all-weather outdoor arena | 80' lunging arena | Polo field (or 2 grand prix fields) | 4 board, double fencing & automated nelson waterers | Other improvements include 3 BR, 2 1/2 BA guest house | Farm office attached to 3 BR house | Machine shed | Carriage house w/apartment | Stone spring house/office | 3 BR apartment | Pond with gazebo

\$8,000,000

PAUL MACMAHON 703.609.1905
SANDRA BRAVO GREENBERG 202.308.3813



FIDELIO

THE PLAINS, VIRGINIA

Prime Fauquier County location minutes from Middleburg | Unbelievable finishes throughout | Antique floors and mantels, vaulted ceilings | 6 BR, 5 full BA, 2 half BA | 6 FP, gourmet kitchen | Improvements include office/studio, stone cottage with office, spa, guest house, pool and lighted tennis court | Landscaped grounds with stream, waterfalls, boxwood and special plantings | 61 acres

\$6,490,000

PAUL MACMAHON 703.609.1905



DEERFIELD

UPPERVILLE, VIRGINIA

181 acres | Brick manor house c. 1844 | 4 bedrooms, lovely kitchen, multiple porches, pine floors, 7 fireplaces, original mantels, large windows, detailed millwork | c. 1810 log cabin/pool house, guest house with theater, 2 tenant houses, 5-bay garage and workshop | Sizable pond

\$4,500,000

HELEN MACMAHON 540.454.1930



MAYAPPLE FARM

MIDDLEBURG, VIRGINIA

Original portion of house built in 1790 in Preston City, CT | House was dismantled and rebuilt at current site | Detail of work is museum quality | Log wing moved to site from Western Virginia circa 1830 | 4 BR, 4 full BA, 2 half BA, 9 FP & detached 2-car garage | Historic stone bank barn and log shed moved from Leesburg, VA | Private, minutes from town | Frontage on Goose Creek | 37.65 acres

\$3,200,000

PAUL MACMAHON 703.609.1905



DIXONS MILL ROAD

MARSHALL, VIRGINIA

Lovely brick home on hilltop setting, completely redone by current owners | Wood floors, high ceilings, lots of light | 6 BR, 5 1/2 BA, 5 FP, sweeping stair case in foyer | Basement level finished for family enjoyment w/ media room, office, gym, billiard room, full bar w/ kitchenette, full bath & outside entrance leading to pool and spa | Improvements include 3-car garage, heated 4-car garage w/car lift | Potting shed/studio w/ attached heated green house | 20 car barn for serious collector | Swimming pool with spa | 5-stall barn | Property fenced and cross fenced | 68.23 acres

\$2,375,000

PAUL MACMAHON 703.609.1905



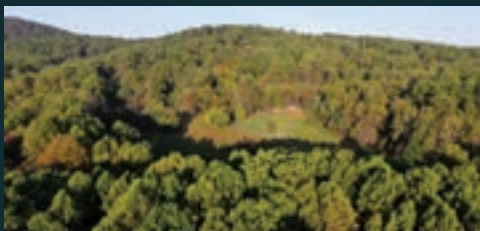
LONG BRANCH

THE PLAINS, VIRGINIA

Gorgeous 71 acre parcel in a wonderful location between Middleburg and The Plains | Rolling land with stone walls and 2 ponds | Enchanting property | Property is in conservation easement and may not be divided further

\$1,950,000

HELEN MACMAHON 540.454.1930



HEIRLONG FARM

MARKHAM, VIRGINIA

235 acres comprised of 6 tax parcels | Potential tax credits | Mostly wooded | Stone cabin circa 1850 | Barn | Large pond | Very private | First time available since the 1950's

\$1,450,000

PAUL MACMAHON 703.609.1905



BUST HEAD ROAD

THE PLAINS, VIRGINIA

82.69 acres | Mostly wooded, mountain views, bold stream in very protected area | Conservation easement | Can not be subdivided | Prime Orange County Hunt location | Halfway between Middleburg and The Plains

\$1,100,000

PAUL MACMAHON 703.609.1905



HALFWAY ROAD

THE PLAINS, VIRGINIA

Hard to find parcel | 13.37 acres between Middleburg and The Plains | 1/2 open, 1/2 wooded with a spring fed pond - easily expandable | Wonderful elevated building site just inside the wood line with a level building area among large old growth trees and substantial rock out cropping | Impressive mountain views to the southwest

\$925,000

HELEN MACMAHON 540.454.1930



Fouad Talout

Long & Foster, Inc.
McLean, Virginia
703-459-4141

fouad.talout@gmail.com

TALOUT

INTERNATIONAL



**NEW LUXURY HOME!
1.5 ACRES IN PRIME MCLEAN LOCATION**

1332McCayLn.com
\$7,950,000 McLean, VA

Newly constructed in 2021, this luxury estate incorporates today's smart home technologies and amenities that ensure the utmost comfort and security. Spanning nearly 14,000 square feet across 3 finished levels with an elevator, the home includes 6 large bedrooms, 7 full and 3 half baths.

Built by ALM Builders, who have a reputation for building some of the area's most glamorous luxury homes, the home offers soaring ceilings in the foyer; great room and dining room; a gorgeous gourmet kitchen with Miele appliances and Italian cabinetry; a 2nd (catering) kitchen; a private corner office; a stunning owner's suite with spa-like bath, a fitness suite with sauna; and a magnificent outdoor living/entertaining area with an elevated deck, pool, waterfall wall, and hot tub.



PALATIAL LUXURY

9305Inglewood.com
\$14,800,000 Potomac, MD



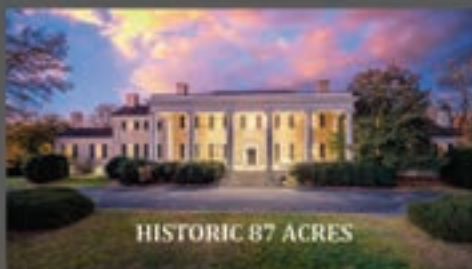
GATED 5 ACRES. RESORT STYLE

701Gouldman.com
\$3,995,000 Great Falls, VA



EXQUISITE NEW HOME!

1048Rector.com
\$4,450,000 McLean, VA



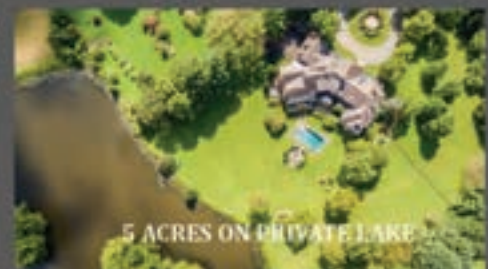
HISTORIC 87 ACRES

255CarterHall.com
\$7,500,000 Millwood, VA



150 FEET OF RIVERFRONT ACCESS

703PotomacKnolls.com
\$5,570,000 McLean, VA



5 ACRES ON PRIVATE LAKE

626PhillipDigges.com
\$4,545,000 Great Falls, VA

LET FOUAD AND HIS TEAM ASSIST WITH ALL YOUR REAL ESTATE NEEDS!

Licensed in D.C., MD, VA



LONG & FOSTER
REAL ESTATE

CHRISTIE'S
INTERNATIONAL REAL ESTATE



Legendary Homes™

LUXURY HOMES IN THE NATION'S CAPITAL AND BEYOND

NOT ALL LEGENDARY HOMES ARE FOR SALE...



BUT THE ONES THAT ARE REQUIRE SPECIAL REPRESENTATION

We'd like to thank our clients for helping us consistently achieve the highest level in Washingtonian's annual ranking of top real estate agents. Because of your faith in us, and our determination to exceed our client's expectations, we're proud to be among the region's elite real estate service providers. It signifies the highest and rarest levels of service and benefits. It is a status we are committed to deliver to our clients today and well into the future, so thanks for your trust in our knowledge and expertise.

If you are considering buying or selling a home in the Washington DC area, call us so we can discuss the best way to accomplish the results you desire. Not all legendary homes are for sale, but the ones that are require the highest level sales team.

LYNDA O'DEA

LegendaryHomes.com

Lynda@LegendaryHomes.com

Certified Christie's Luxury Specialist

Long & Foster | Christie's International Real Estate

7161 Woodmont Ave, Bethesda, MD 20815

Direct 240.988.4400 Office 240.800-5155

BEST
WASHINGTONIAN
2018



LONG & FOSTER
REAL ESTATE

CHRISTIE'S
INTERNATIONAL REAL ESTATE

Find your Haven along Maryland's Eastern Shore



OXFORD WATERFRONT ESTATE: Located on the still waters of Town Creek in Oxford, Plimhimmon represents two distinct building periods dating from the late 18th and 19th centuries, the oldest section being erected around 1767. Incorporating old world craftsmanship, the manor has been brought to modern standards with such improvements as geothermal heating and cooling, elevator service from the basement through the second floor and amenities expected of the waterfront estate market. Quietly sited on 200 acres at the head of Town Creek, the farm has a dock with approximately four feet of water at mean low tide. A waterside guest cottage is sited nearby offering those amenities for extended family and service help if needed. An apartment over the garage, a carriage house renovated to provide studio/office accommodations and a generously proportioned barn compliment the farm providing adequate facilities for the hobby enthusiast and outdoorsman alike. \$9,750,000



OUTBUILDING

TALBOT COUNTY WATERFRONT RETREAT: Incredible private location overlooking Plaindealing Creek. This home offers great views, a protected pier with two slips and approximately four feet mean low water. Brick rancher with comfortable living spaces offering large living room, sunroom with walls of windows, waterside owner's suite, eat-in kitchen, waterside deck and attached two car garage. Large storage shed. New three bedroom septic being installed. Large custom built outbuilding/barn with concrete ramp, tons of storage and small workshop. Short trip to St. Michaels or Easton. Also nearby is the Bellevue public landing, ferry access, playground and beach. This property is just across the river from Oxford. Boat over or take the Ferry for dinner at several of Oxford's fine eateries or get ice cream from the famous Scottish Highland Creamery. \$1,595,000



ST. MICHAELS / EASTON WATERFRONT: Incredible basically brand new construction with 5.5+/- MLW on Edge Creek. Three bedroom main house with a studio above the 3 bay garage with workshop. Stunning views and a very comfortable well thought out floor plan, gourmet kitchen, water side screen porch and a beautiful first floor primary bedroom with vaulted ceilings. Very special piece of property, the level of detail in this home is extraordinary! \$1,799,500

DOWNTOWN EASTON: This classic brick colonial is one of Easton's most notable landmarks. Located on a double lot on South Washington Street, this home offers spacious rooms with custom moldings, bright and airy south facing sunroom, four large bedrooms with tile baths, walk-up attic, basement, front and rear stairways and a separate two car garage. Don't miss the opportunity to own an iconic Easton home. First time offered for sale in 45 years. \$869,900



Barbara C. Watkins
410.310.2021
barb.c.watkins@gmail.com
www.EasternShoreHomes.com



Schuyler Benson
410-310-3251
sbenson@bensonandmangold.com
www.SchuylerBenson.com



Benson & Mangold Real Estate | 410-822-1415 | 27999 Oxford Road, Oxford, Maryland



ADVERTISERS IN THIS ISSUE

FIND IT ONLINE!

homeanddesign.com

Head to the web for more information about area pros, services, project sources, before- and after- photos and much more.



BAY BEAUTY

A design team crafts a sprawling getaway on Maryland's Eastern Bay to reflect its stunning waterfront locale



JOYFUL MIX

A custom Spring Valley home combines clean-lined, traditional architecture and richly layered interiors



OUTDOOR ESCAPES

Three spectacular landscapes celebrate a fresco living in style



SERENE DREAM


Architect Jeffrey Davenport designs his own modernist family retreat on Virginia's Lake Anna

A.B.E. Networks.....	37, 67	KONST SieMatic	69
ABW.....	8	KONST Union	69
ADU.....	42	Kane Landscapes, Inc.....	75
AJ Madison.....	24	Kohlmark Group	35
Abbey Design + Remodel.....	178, 179	Lewis Aquatech	82, 83
Anthony Wilder Design/Build.....	55	Ligne Roset.....	7, 60
Aqua-Bright LLC.....	76	Lila Fendrick Landscape Architects.....	95
B. Watkins & S. Benson, Benson & Mangold.....	205	Long & Foster	5
Barbara Hawthorn Interiors, Ltd.....	187	Lynbrook of Annapolis.....	29
Becker Morgan Group, Inc.....	197	Lynda O'Dea, Long & Foster.....	204
Bob Narod, Photographer, LLC	188	Margery Wedderburn Interiors.....	65
Bonnie Ammon Interiors	61	Marin Hagen, Coldwell Banker	201
Boss Design.....	inside front cover	Marks-Woods Construction Services	168, 169
Bowers Design Build	176, 177	McHale Landscape Design.....	2, 3, 68
Cahill Companies.....	80, 81	Michael Nash	23, 170, 171, 174, 175, 180, 181
Campion Hruby Landscape Architects.....	79	Monarch	11
Capitol Closet Design.....	32	NV Kitchen & Bath	34
Cardine Studios.....	197	NVS Kitchen & Bath.....	185
Carpet Creations.....	189	Penza+Bailey Architects.....	185
Casey Margenau Fine Homes & Estates.....	207	Purple Cherry Architects.....	12, 13
Christie Leu Interiors	64	Randolph Flooring & Cabinetry.....	194
Circa Lighting	4	Roche Bobois	20, 21
Citibank.....	31	Rockville Interiors	58
Closets by Design.....	154	runningdog Architects.....	191
Colao & Peter Outdoor Environments.....	84, 85	Saienni Stairs.....	191
Cornerstone Kitchen & Bath.....	71	Sandy Spring Builders	185
D.A. Dunlevy.....	87	Scapes, Inc	95
David Burroughs Photography	94	Sheridan MacMahon Realtors	202
Davida's Kitchen & Tiles.....	193	SieMatic	161
Dominion Lighting.....	62, 197	Snaidero	inside back cover
Dulles Electric Supply.....	192	Sroka Design Inc.....	33
Edelmann Love Toregas Group.....	200	Stone Store	78
Eisenbrandt Companies	48	Stuart Kitchens	back cover
Electronic Home Environments.....	192	Sunnyfields Cabinetry	66
Ella Scott Design.....	22	Surrounds Landscape Architecture.....	77
Ferguson Bath, Kitchen & Lighting Gallery.....	49	Talout International LLC, Long & Foster	203
Fine Earth Landscape	89	Tatyana Swift Architect & Design	63
FineCraft Contractors, Inc.....	172, 173	The Cahill Companies.....	80, 81
Forbes Design Center.....	193	The Container Store	6
GTM Architects.....	86	Theo & Partners.....	41
George Washington Univ Hosp.....	15	TOBE DesignGroup LLC	14
Gutierrez Studios	14	Tri-State Stone	93
Hammond Wilson.....	39	TriVistaUSA Design + Build	59
Holly Hunt.....	1	TW Perry.....	163
Horizon Group	45	USA Cabinet Store	19
Hutchison Glass & Mirror, Inc.....	194	Walnut Hill Landscape Co	26
Integrated Media Systems	189	Walpole Outdoors.....	93
Interior Concepts, Inc.....	40	Washington Design Center.....	25
Jack Rosen Custom Kitchens	38	Wentworth, Inc.	187
James McDonald Assoc.....	70	Wheat's Landscape.....	72
Jennifer Gilmer Kitchen & Bath, Ltd.....	47	Wine Cellars by Lisa.....	48
Jennifer Horn Landscape Architecture.....	91	Zantinger.....	16, 17
Joseph Richardson Landscape Architecture	91	ZEN Associates, Inc.....	86

Casey Margenau

— Over \$3 Billion Sold — Fine Homes & Estates

Virginia's Leader in Luxury and International Real Estate Marketing For Over 30 Years

View Casey's  Tours of These & Other Homes



KNOWLEDGE

EXPERIENCE

TRUST



2555 Yonder Hills Way, Oakton, VA 22124

\$2,499,900



1364 Hardison Lane, McLean, VA 22102

\$2,495,500



822 Clinton Place, McLean, VA 22101

\$5,750,000



6333 Old Chesterbrook, McLean, VA 22101

\$2,987,432



1506 Windstone Drive, Vienna, VA 22182

\$2,350,000



1233 Stuart Robeson Drive, McLean, VA 22101

\$2,300,000

Casey Margenau Fine Homes & Estates, Inc.



www.margenau.com
703.827.5777



MODERN OUTPOST

A destination in Occoquan State Park celebrates the area's rich history

Nestled against a bluff overlooking the Occoquan River in Lorton, Virginia, the Jean R. Packard Occoquan Center unites expanses of wood and glass in a bold, modern structure. Commissioned by the NOVA Parks system, Baltimore-based GWWO Architects conceived the 18,367-square-foot, multi-use building as a venue for visitors to commune with the parkland and river, learn about the region's history and enjoy a picturesque spot for recreation.

Sited to blend with the surrounding topography, the LEED Gold-certified building emphasizes sustainability and a gentle footprint. The concept is the union of contrasting halves. "Each is articulated with different structural systems and materials, yet tied together—one light and delicate, one solid and strong," notes GWWO design principal Alan Reed. The glass-and-steel side is a backdrop for events; the other, clad in cypress timbers harvested from the river bottom, houses the 1608 Room (named for the year of Captain John Smith's voyage through the Chesapeake Bay), an interpretive exhibit on the area's history.

A lower volume contains a restaurant with al fresco seating; a green roof minimizes the visual impact of this section while its brick exterior references historic structures preserved on-site—including a kiln that produced brick 100 years ago.

.....
Architecture: Alan Reed, FAIA, LEED AP, principal-in-charge; Lisa Andrews, AIA, LEED AP BD+C, project manager, GWWO Architects, Baltimore, Maryland. General Contractor: Forrester Construction Company, Rockville, Maryland. Landscape Architecture: Rhodside & Harwell, Alexandria, Virginia. Text: Julie Sanders. Photography: Sam Kittner.



VISION | Pininfarina Design | Made in Italy

Studio Snaidero DC Metro | 1130 N Fairfax St | Alexandria | 703.683.1130

1.877.762.4337 | Exclusively distributed by snaidero-usa.com



Designer Emily Rosenthal

YOU ALWAYS KNOW A STUART KITCHEN.



SINCE 1955, WE'VE BEEN FIRST CHOICE FOR THE BEST KITCHEN IN THE NEIGHBORHOOD. COME VISIT OUR SHOWROOMS. EVERYTHING YOU NEED FOR THE ROOM YOU'LL LOVE THE MOST IS HERE IN ONE PLACE. AND, YOU'LL UNDERSTAND WHY SO MANY PEOPLE SAY, "NOTHING ADDS MORE VALUE TO YOUR HOME."

BETHESDA SHOWROOM AT 8203 WISCONSIN AVE. 240-223-0875
ANNAPOLIS SHOWROOM 2335B FOREST DR. 410-761-5700

STUARTKITCHENS.COM